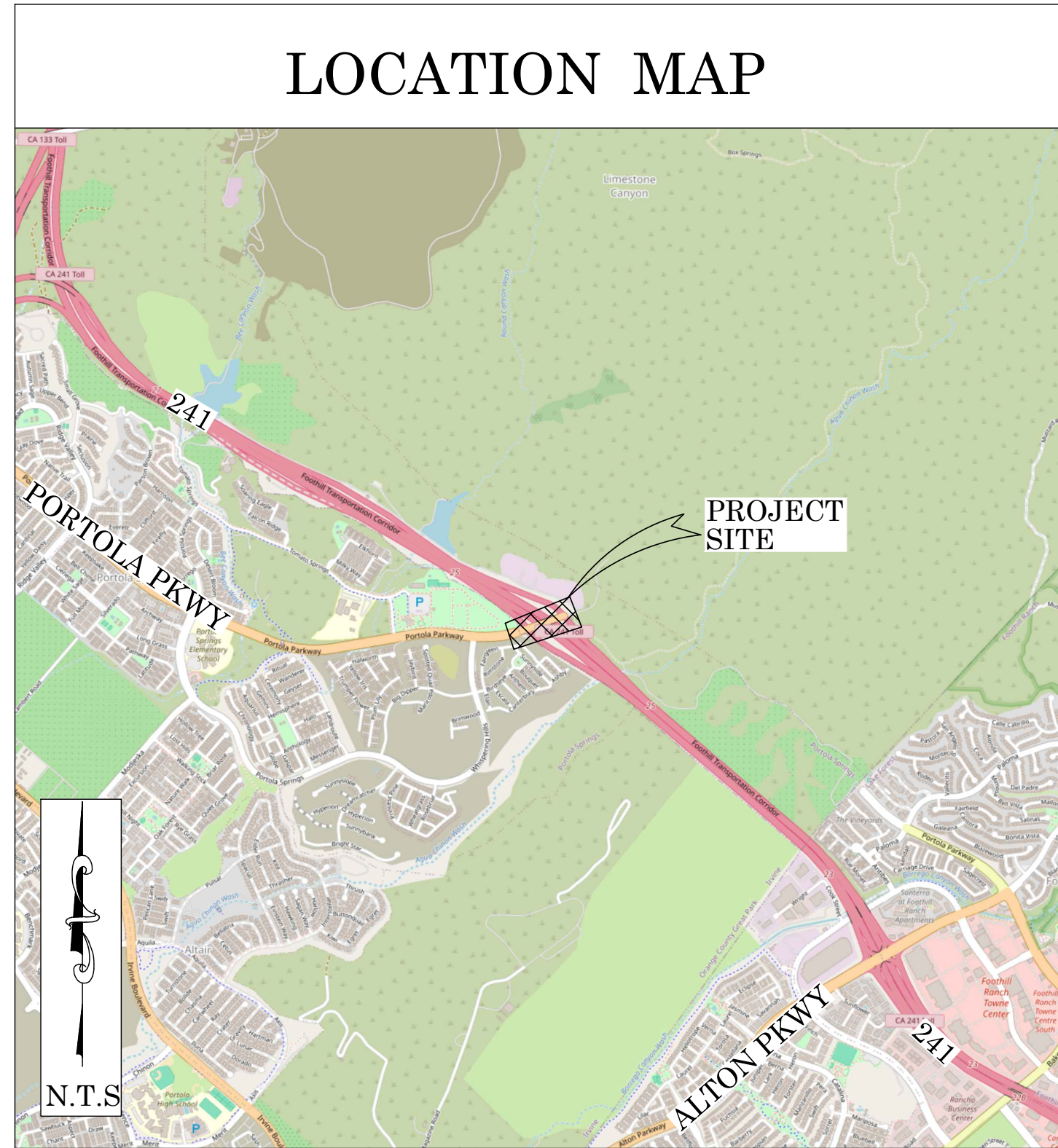
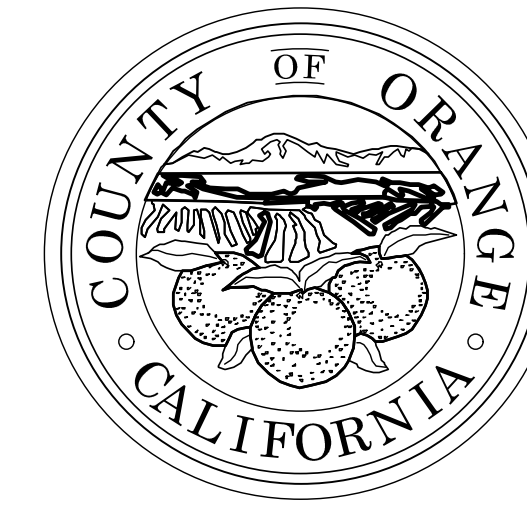


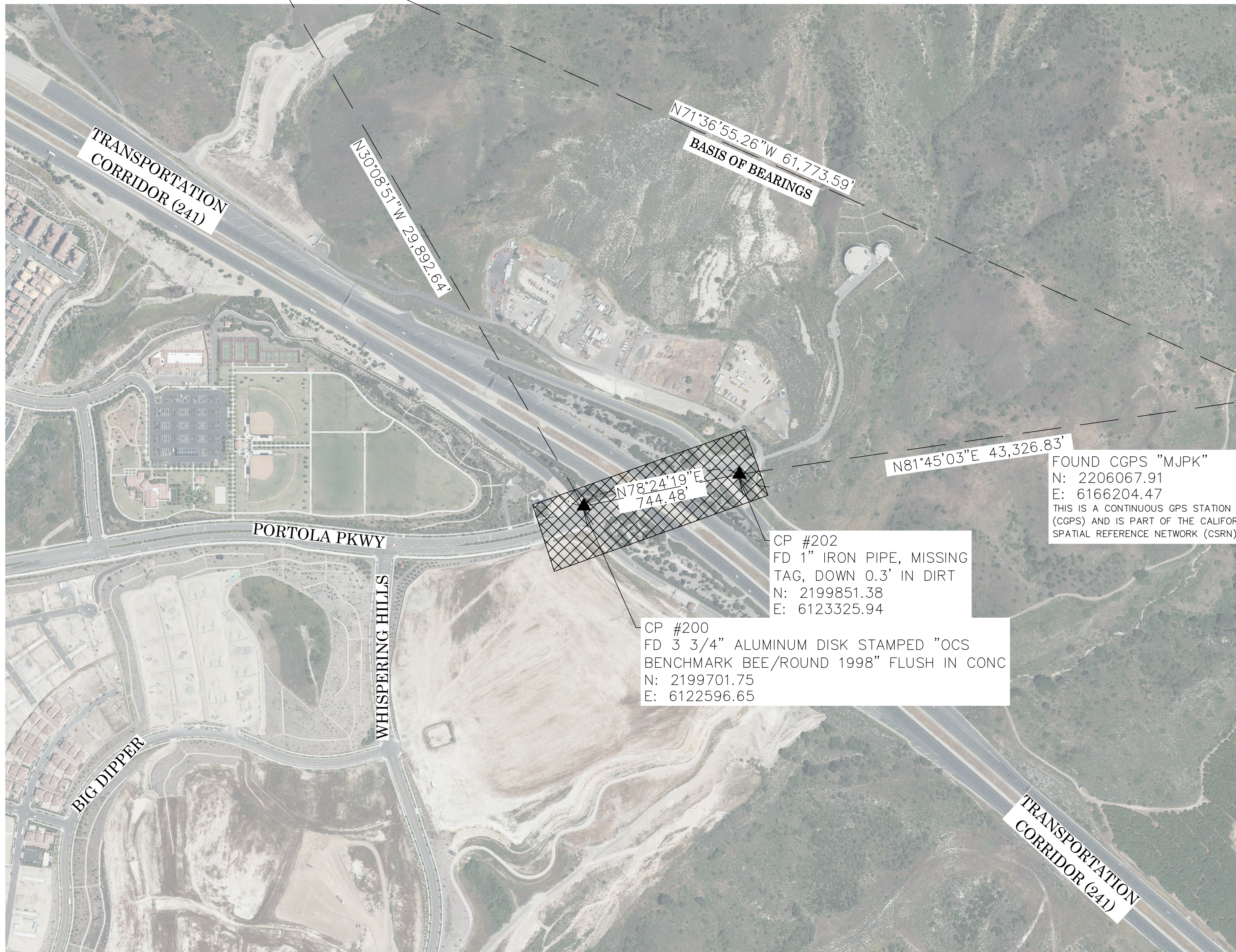


OC PUBLIC WORKS DEPARTMENT
JAMES TREADAWAY, DIRECTOR OF PUBLIC WORKS
MICHAEL LAFONTAINE, DEPUTY COUNTY SURVEYOR
PORTOLA PARKWAY



FOUND CGPS "OEOC"
N: 2225550.98
E: 6107583.77
THIS IS A CONTINUOUS GPS STATION
(CGPS) AND IS PART OF THE CALIFORNIA
SPATIAL REFERENCE NETWORK (CSRN)

ADA UPGRADES



BASIS OF BEARINGS

THE BASIS OF BEARINGS FOR THIS SURVEY IS BASED ON THE CALIFORNIA COORDINATE SYSTEM (CCS83), ZONE VI, NAD 83, OCS (2017.50) EPOCH ADJUSTMENT, AS DETERMINED LOCALLY BY A LINE BETWEEN CONTINUOUS GLOBAL POSITIONING STATIONS CGPS STATIONS (MJP) AND (OEOC) BEING NORTH 71°36'55.26" WEST AS DERIVED FROM THE COORDINATES PUBLISHED BY THE CALIFORNIA SPATIAL REFERENCE CENTER (CSRC) ALONG WITH DATA SHEETS ON FILE IN THE OFFICE OF THE ORANGE COUNTY SURVEYOR.

HORIZONTAL DATUM

COORDINATES SHOWN ARE BASED ON THE CALIFORNIA COORDINATE SYSTEM (CCS83), ZONE VI, NAD 83, OCS (2017.50) EPOCH ADJUSTMENT.
ALL DISTANCES SHOWN ARE GRID, UNLESS OTHERWISE NOTED. TO OBTAIN GROUND DISTANCES MULTIPLY GRID BY A COMBINED FACTOR OF 1.00005444.
THIS COMBINATION FACTOR WAS HELD AT: CP# 200
N: 2199701.75 E: 6122596.65 EL: 705.73
ALL DISTANCES ARE BASED ON THE U.S. SURVEY FOOT.

VERTICAL DATUM

O.C.S. BM. BEE-ROUND-6 ELEV. = 705.728' YEAR LEVELED: 1998
NAVD 1988 (O.C.S. 1995 ADJUSTMENT)
DESCRIPTION: DESCRIBED BY OCS 2002 - FOUND 3 3/4" OCS ALUMINUM BENCHMARK DISK STAMPED "BEE-ROUND-6", SET IN THE NORTHWESTERLY CORNER OF A 4 FT. BY 22 FT. CONCRETE CATCH BASIN. MONUMENT IS LOCATED IN THE NORTHWESTERLY CORNER OF THE INTERSECTION OF PORTOLA PARKWAY AND THE 241 TOLL ROAD, 42 FT. NORTHERLY OF THE CENTERLINE OF PORTOLA AND 80 FT. WESTERLY OF THE WESTERLY EDGE OF THE BRIDGE CROSSING THE 241 TOLL ROAD. MONUMENT IS SET LEVEL WITH THE SIDEWALK.

NOTES

THE SURVEY INFORMATION SHOWN HEREON IS TO BE USED FOR TOPOGRAPHIC RELATIONSHIPS ONLY AND IS NOT INTENDED FOR LAND ACQUISITION OR BOUNDARY PURPOSES.

SHEET INDEX

SHEET NO.	DESCRIPTION
SHEET 1	TITLE SHEET
SHEET 2-4	BOUNDARY SHEETS
SHEETS 5-6	TOPOGRAPHIC MAP

BASIS OF STATIONING

THE BASIS OF STATIONING IS 10+00 (ASSUMED) HELD AT THE CENTERLINE BEGINNING OF CURVATURE OF PORTOLA PARKWAY INCREASING NORTH EASTERLY THEREFROM ALONG SAID CENTERLINE.

PURPOSE OF SURVEY

THE PURPOSE OF THE SURVEY IS TO PROVIDE A TOPOGRAPHIC MAP AND RIGHT OF WAY ESTABLISHMENT FOR THIS PORTION OF PORTOLA PARKWAY.

SENIOR LAND SURVEYOR'S CERTIFICATE:

THIS MAP CORRECTLY REPRESENTS A SURVEY MADE BY ME OR UNDER MY DIRECTION IN CONFORMANCE WITH REQUIREMENTS OF THE PROFESSIONAL LAND SURVEYORS' ACT; THIS 3 DAY OF JUNE, 2024.

MICHAEL KUBISTY, PLS. SENIOR LAND SURVEYOR



DEPUTY COUNTY SURVEYOR'S STATEMENT:

THIS MAP HAS BEEN EXAMINED IN ACCORDANCE WITH THE PROFESSIONAL LAND SURVEYORS' ACT; THIS 3 DAY OF JUNE, 2024.

MICHAEL LAFONTAINE, PLS. DEPUTY COUNTY SURVEYOR

JESOM MORENO, PLS. SENIOR LAND SURVEYOR



TOPOGRAPHIC MAPPING PROJECT

		COUNTY OF ORANGE OC PUBLIC WORKS OC SURVEY/FIELD SERVICES/BOUNDARY ANALYSIS & MAPPING			
		PORTOLA PARKWAY ADA UPGRADES			
		TITLE SHEET			
		PROJECT LIMITS: ON AND OFF RAMP OF THE 241 TOLL ROAD ALONG PORTOLA PKWY			
		DATE OF SURVEY: APRIL 2024		BY: J. LOFGREEN & PARTY	
MAPPING		BY: J. PEDRETTI			
OFFICE CHECK		BY: M. KUBISTY, PLS			
FIELD CHECK		BY: T. LOFGREEN & PARTY			
SCALE: N.T.S.		W.O. #EQ20612C			
FILE: PORTOLA_TOPO_2024.DWG		FILE # 2324PW-PORTOLA			
MARK	DATE	ITEM			
REVISIONS					

MONUMENT NOTES

- 1

FD I.P. WITH 2 INCH PUNCHED BRASS DISK STAMPED "LS 7076" IN OCS WELL MONUMENT PER CORNER RECORD 2008-0165, DOWN 1.5' IN A.C., ACCEPTED AS THE BC OF PORTOLA PARKWAY PER R3.
- 2

FD LEAD TACK AND TAG STAMPED "LS 7076 TIE" PER R8, FLUSH IN TOP OF CURB, FITS TIE PER R8.
- 3

FD 2-1/2 INCH PUNCHED BRASS DISK STAMPED "LS 7076" PER CORNER RECORD 2008-0164, DOWN 0.3' IN DIRT, S16°15'59"E 0.09' FROM THE EC OF CENTERLINE OF PORTOLA PARKWAY PER R3, NOT ACCEPTED.
- 4

FD BOAT SPIKE & WASHER STAMPED "LS 4200" PER ALIGNMENT BOOK A/SW IRV 2694, DOWN 0.30' IN A.C., ACCEPTED AS THE EC OF PORTOLA PARKWAY OF R3.
- 5

FD 1 INCH I.P. WITH TAG STAMPED "LS 6086" PER R1, DOWN 0.50' IN DIRT, ACCEPTED AS NE'LY BC OF LOT FF PER R1.
- 6

FD I.P. WITH TAG STAMPED "LS 6086" PER R1, DOWN 1.0' IN DIRT UNDER CONCRETE MOW STRIP TRANSFERRED UP, ACCEPTED AS NE'LY CORNER OF LOT FF PER R1.
- 7

FD LEAD & TACK WITH TAG STAMPED "LS 6086" PER R1, FLUSH IN CONCRETE, ACCEPTED AS N'LY TRACT CORNER PER R1.
- 8

FD LEAD & TACK WITH TAG STAMPED "LS 6086" PER R1, FLUSH IN CONCRETE, ACCEPTED AS N'LY TRACT CORNER PER R1.
- 9

FD 1 INCH I.P. WITH TAG STAMPED "LS 6086" PER R4, DOWN 0.60' IN DIRT, ACCEPTED AS THE INTERSECTION OF RIGHT OF WAY AND THE E'LY TRACT LINE OF R4.
- 10

FD REBAR WITH 1-1/2 INCH PUNCHED ALUMINUM CAP STAMPED "LS 4965" PER R6, DOWN 0.50' IN DIRT, ACCEPTED AS SW'LY CORNER OF PARCEL 300277-4.
- 11

SET LEAD & TACK WITH 3/4 INCH OCS TIE TAG, FLUSH ON TOP OF CONCRETE CURB.
- 12

FD LEAD & HOLE, FLUSH IN CONCRETE CURB, ACCEPTED AS OCS TIE TAG PER R7.
- 13

FD LEAD & HOLE, FLUSH IN CONCRETE CURB, ACCEPTED AS OCS TIE TAG PER R7
- 14

FD LEAD & HOLE, FLUSH IN CONCRETE CURB, ACCEPTED AS OCS TIE TAG PER R7
- 15

FD REBAR WITH 1-1/2 INCH ALUMINUM CAP STAMPED "E.T.C. LS 4965" PER R6, DOWN 1.0' IN DIRT, ACCEPTED AS E'LY CORNER OF PARCEL 300277-4 OF R5.
- 16

FD REBAR WITH 1-1/2 INCH ALUMINUM CAP STAMPED "E.T.C. LS 4965" PER R6, DOWN 1.3' IN DIRT, ACCEPTED AS E'LY CORNER OF PARCEL 300277-4 OF R5.
- 17

FD 1 INCH I.P. WITH NO TAG, DOWN 0.30' IN DIRT, ACCEPTED AS 1 INCH I.P. WITH D.O.T. PLASTIC PLUG PER R10, ALSO ACCEPTED AS THE E'LY CORNER OF PARCEL 12018-1 OF R2.
- 18

FD 2 INCH I.P. WITH TAG STAMPED "LS 6086" PER R1, DOWN 0.3' IN DIRT, ACCEPTED AS NE'LY TRACT CORNER OF R1.
- 19

FD 1 INCH I.P. WITH NO TAG, DISTURBED MONUMENT NOT LOCATED OR USED AS PART OF BOUNDARY ESTABLISHMENT

REFERENCES

- (R1) = TRACT NO. 18087, MM 977/15-32
- (R2) = INST. NO. 93-0723551 O.R.
- (R3) = RECORD OF SURVEY NO. 89-1199, RSB 125/5-9
- (R4) = TRACT NO. 17769, MM 963/40-44
- (R5) = INST. NO. 19980694409 O.R., D148519674
- (R6) = RECORD OF SURVEY NO. 99-1012, RSB 178/8-31
- (R7) = CORNER RECORD, C.R. 2001-1211
- (R8) = CORNER RECORD, C.R. 2008-0164
- (R9) = LOT LINE ADJUSTMENT LL2003-007, INST. NO. 2003000416458
- (R10) = RECORD OF SURVEY NO. 94-1016, RSB 151/19-23

ESTABLISHMENT NOTES

- A

ESTABLISHED THE CENTERLINE CURVE OF PORTOLA PARKWAY PER R3 BY HOLDING RECORD RADIUS 2000.00' AND RECORD DELTA 25°59'38" PER R3 BETWEEN MONUMENT NOTES 1 AND 4.
- B

ESTABLISHED THE CENTERLINE OF PORTOLA PARKWAY BY HOLDING A LINE TANGENT TO CURVE ESTABLISHMENT A NE'LY FROM MONUMENT NOTE 4.
- C

ESTABLISHED THE CENTERLINE BC OF PORTOLA PARKWAY BY HOLDING 800.13' PER R10 NE'LY ALONG LINE ESTABLISHMENT B.
- D

ESTABLISHED A PORTION OF THE CENTERLINE CURVE OF PORTOLA PARKWAY BY HOLDING RECORD RADIUS 1999.87' AND RECORD DELTA 2°39'31" NE'LY PER R10.
- E

ESTABLISHED THE INTERSECTION OF THE CENTERLINE CURVE OF PORTOLA PARKWAY WITH THE E'LY LINE OF PARCEL 12018-1 OF R2 BY HOLDING RECORD DISTANCE OF 92.80' PER R10 NE'LY ALONG CURVE ESTABLISHMENT D FROM ESTABLISHMENT NOTE C.
- F

ESTABLISHED THE S'LY CORNER OF PARCEL 12018-1 OF R2 BY HOLDING RECORD DISTANCE 50.00' PER R10 S'LY AND RADIAL TO CURVE ESTABLISHMENT D FROM ESTABLISHMENT NOTE E.
- G

ESTABLISHED ANGLE POINT IN THE E'LY LINE OF OF PARCEL 12018-1 OF R2 BY HOLDING RECORD DISTANCE 138.00' PER R10 N'LY AND RADIAL TO CURVE ESTABLISHMENT D FROM ESTABLISHMENT NOTE F AND PASSING THROUGH ESTABLISHMENT NOTE E.
- H

SFN, ESTABLISHED ANGLE POINT IN E'LY LINE OF PARCEL 12018-1, AND THE T.P.O.B. OF PARCEL 300277-4 OF R5 BY LEAST SQUARES ADJUSTMENT BETWEEN ESTABLISHMENT NOTE G AND MONUMENT NOTE 10.
- I

ESTABLISHED ANGLE POINT ALONG THE SE'LY LINE OF R4 BY LEAST SQUARES ADJUSTMENT BETWEEN MONUMENT NOTES 8 AND 10 PER R4 AND PASSING THROUGH MONUMENT NOTE 9.
- J

ESTABLISHED ANGLE POINT IN E'LY LINE OF R1 BY LEAST SQUARES ADJUSTMENT HOLDING A LINE RADIAL TO CURVE ESTABLISHMENT A BETWEEN MONUMENT NOTES 6 AND 5 PER R1.
- K

ESTABLISHED THE CENTERLINE EC OF PORTOLA PARKWAY BY HOLDING 422.90' PER R3 W'LY FROM MONUMENT NOTE 1 AND TANGENT TO CURVE ESTABLISHMENT A.

NOTES

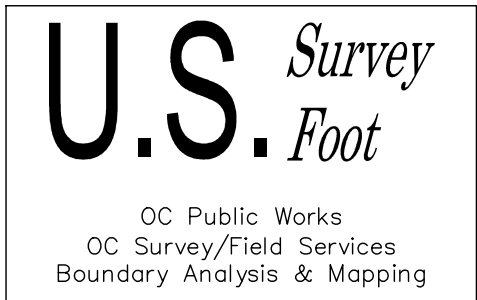
- ALL BOUNDARY LINES NOT SHOWN IN BOLD ARE FOR GRAPHICAL REPRESENTATION ONLY.
- RECORD DISTANCES SHOWN HEREON ARE AS THEY APPEAR ON THE DOCUMENT OF RECORD. DISTANCES MAY BE EITHER GRID OR GROUND, AS PER SAID RECORD.
- REFERENCE DOCUMENTS IN THE REFERENCE LEGEND ARE LIVE HYPERLINKS TO SAID DOCUMENT.
- MONUMENT SYMBOLS CONTAIN LIVE HYPERLINKS TO IMAGES, IF THEY EXIST, OF RESPECTIVE MONUMENT.

BASIS OF BEARINGS

THE BASIS OF BEARINGS FOR THIS SURVEY IS BASED ON THE CALIFORNIA COORDINATE SYSTEM (CCS83), ZONE VI, NAD 83, OCS (2017.50) EPOCH ADJUSTMENT, AS DETERMINED LOCALLY BY A LINE BETWEEN CONTINUOUS GLOBAL POSITIONING STATIONS CGPS STATIONS (MJPK) AND (OEOC) BEING NORTH N71°36'55.26"W EAST AS DERIVED FROM THE COORDINATES PUBLISHED BY THE CALIFORNIA SPATIAL REFERENCE CENTER (CSRC) ALONG WITH DATA SHEETS ON FILE IN THE OFFICE OF THE ORANGE COUNTY SURVEYOR.

HORIZONTAL DATUM

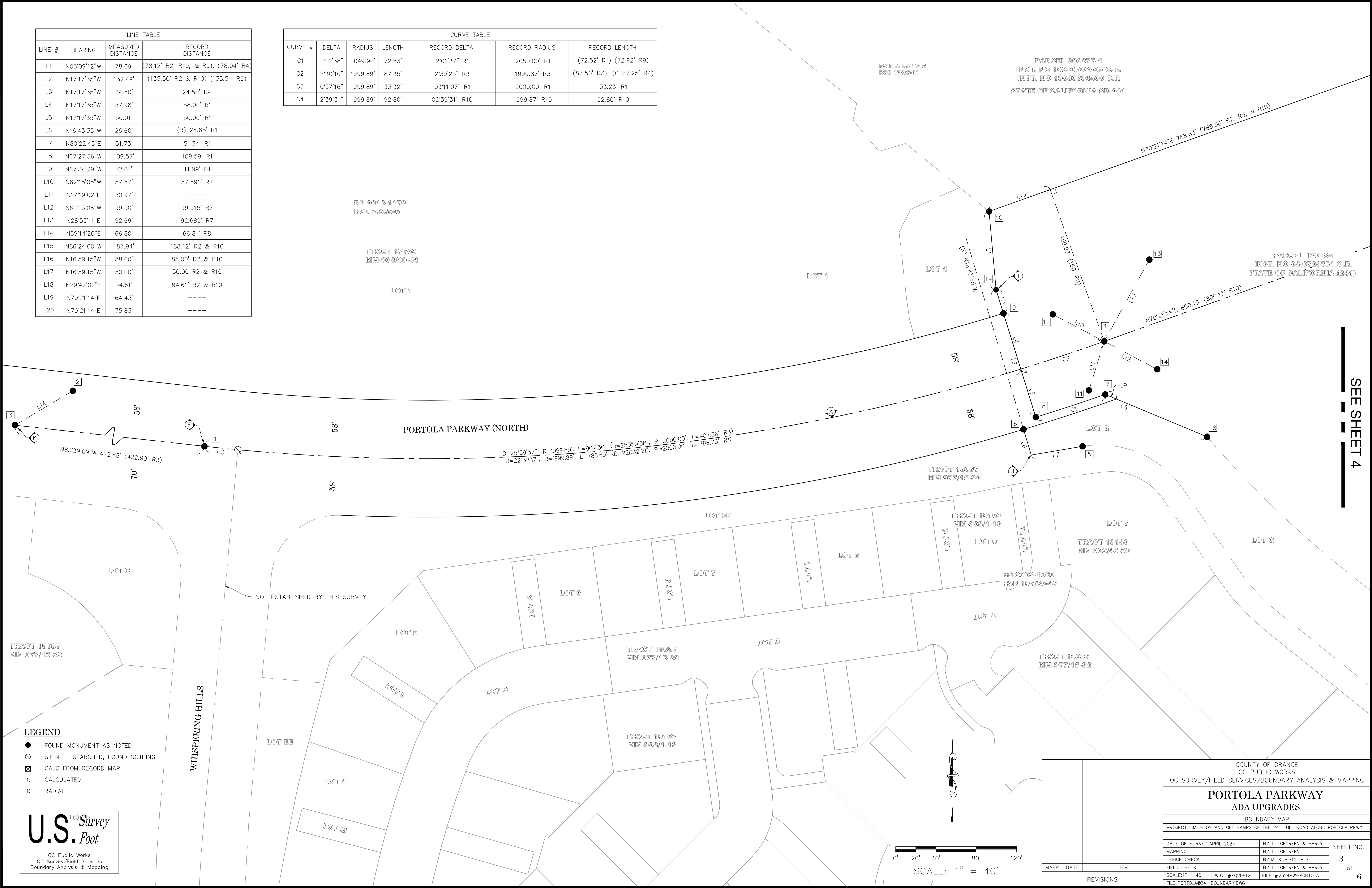
- COORDINATES SHOWN ARE BASED ON THE CALIFORNIA COORDINATE SYSTEM (CCS83), ZONE VI, NAD 83, OCS (2017.50) EPOCH ADJUSTMENT.
- ALL DISTANCES SHOWN ARE GRID, UNLESS OTHERWISE NOTED. TO OBTAIN GROUND DISTANCE MULTIPLY A GRID DISTANCE BY 1.00005444.
- COMBINATION FACTOR WAS HELD AT POINT NUMBER 200 N:2199701.75', E:6122596.65', ELEVATION= 705.73'.
- RECORD DISTANCES SHOWN HEREON ARE AS THEY APPEAR ON THE DOCUMENT OF RECORD. DISTANCES MAY BE EITHER GRID OR GROUND, AS PER SAID RECORD.
- ALL DISTANCES ARE BASED ON THE U.S. SURVEY FOOT.



		COUNTY OF ORANGE OC PUBLIC WORKS OC SURVEY/FIELD SERVICES/BOUNDARY ANALYSIS & MAPPING					
		PORTOLA PARKWAY ADA UPGRADES					
		BOUNDARY MAP					
		PROJECT LIMITS: ON AND OFF RAMPS OF THE 241 TOLL ROAD ALONG PORTOLA PKWY					
MARK	DATE	ITEM	DATE OF SURVEY: APRIL 2024		BY: T. LOFGREEN & PARTY		SHEET NO. 2 of 6
			MAPPING		BY: T. LOFGREEN		
			OFFICE CHECK		BY: M. KUBISTY, PLS		
			FIELD CHECK		BY: T. LOFGREEN & PARTY		
			SCALE: 1" = 40'		W.O. #E020612C		
REVISIONS			FILE: #2324PW-PORTOLA				
			FILE: PORTOLA#241 BOUNDARY.DWG				

LINE TABLE			
LINE #	BEARING	MEASURED DISTANCE	RECORD DISTANCE
L1	N05°09'12"W	78.09'	(78.12' R2, R10, & R9), (78.04' R4)
L2	N17°17'35"W	132.49'	(135.50' R2 & R10) (135.51' R9)
L3	N17°17'35"W	24.50'	24.50' R4
L4	N17°17'35"W	57.98'	58.00' R1
L5	N17°17'35"W	50.01'	50.00' R1
L6	N16°43'35"W	26.60'	(R) 26.65' R1
L7	N80°22'45"E	51.73'	51.74' R1
L8	N67°27'36"W	109.57'	109.59' R1
L9	N67°34'29"W	12.01'	11.99' R1
L10	N62°15'05"W	57.57'	57.591' R7
L11	N17°19'02"E	50.97'	-----
L12	N62°15'08"W	59.50'	59.515' R7
L13	N28°55'11"E	92.69'	92.689' R7
L14	N59°14'20"E	66.80'	66.81' R8
L15	N86°24'00"W	187.94'	188.12' R2 & R10
L16	N16°59'15"W	88.00'	88.00' R2 & R10
L17	N16°59'15"W	50.00'	50.00 R2 & R10
L18	N29°42'02"E	94.61'	94.61' R2 & R10
L19	N70°21'14"E	64.43'	-----
L20	N70°21'14"E	75.83'	-----

CURVE TABLE						
CURVE #	DELTA	RADIUS	LENGTH	RECORD DELTA	RECORD RADIUS	RECORD LENGTH
C1	2°01'38"	2049.90'	72.53'	2°01'37" R1	2050.00' R1	(72.52' R1) (72.92' R9)
C2	2°30'10"	1999.89'	87.35'	2°30'25" R3	1999.87' R3	(87.50' R3), (C 87.25' R4)
C3	0°57'16"	1999.89'	33.32'	03°11'07" R1	2000.00' R1	33.23' R1
C4	2°39'31"	1999.89'	92.80'	02°39'31" R10	1999.87' R10	92.80' R10



SEE SHEET 4

- LEGEND**
- FOUND MONUMENT AS NOTED
 - ⊗ S.F.N. — SEARCHED, FOUND NOTHING
 - ☑ CALC FROM RECORD MAP
 - C CALCULATED
 - R RADIAL

U.S. Survey

Foot

OC Public Works
OC Survey/Field Services
Boundary Analysis & Mapping

		COUNTY OF ORANGE OC PUBLIC WORKS OC SURVEY/FIELD SERVICES/BOUNDARY ANALYSIS & MAPPING					
		PORTOLA PARKWAY ADA UPGRADES					
		BOUNDARY MAP					
		PROJECT LIMITS: ON AND OFF RAMPS OF THE 241 TOLL ROAD ALONG PORTOLA PKWY					
		DATE OF SURVEY: APRIL 2024		BY: T. LOFGREEN & PARTY		SHEET NO. 3 of 6	
		MAPPING		BY: T. LOFGREEN			
		OFFICE CHECK		BY: M. KUBISTY, PLS			
		FIELD CHECK		BY: T. LOFGREEN & PARTY			
		MARK	DATE	ITEM	SCALE: 1" = 40' W.O. #E020612C		FILE #2324PW-PORTOLA
		REVISIONS			FILE: PORTOLA#241 BOUNDARY.DWG		

LINE TABLE			
LINE #	BEARING	MEASURED DISTANCE	RECORD DISTANCE
L1	N05°09'12"W	78.09'	(78.12' R2, R10, & R9), (78.04' R4)
L2	N17°17'35"W	132.49'	(135.50' R2 & R10) (135.51' R9)
L3	N17°17'35"W	24.50'	24.50' R4
L4	N17°17'35"W	57.98'	58.00' R1
L5	N17°17'35"W	50.01'	50.00' R1
L6	N16°43'35"W	26.60'	(R) 26.65' R1
L7	N80°22'45"E	51.73'	51.74' R1
L8	N67°27'36"W	109.57'	109.59' R1
L9	N67°34'29"W	12.01'	11.99' R1
L10	N62°15'05"W	57.57'	57.591' R7
L11	N17°19'02"E	50.97'	-----
L12	N62°15'08"W	59.50'	59.515' R7
L13	N28°55'11"E	92.69'	92.689' R7
L14	N59°14'20"E	66.80'	66.81' R8
L15	N86°24'00"W	187.94'	188.12' R2 & R10
L16	N16°59'15"W	88.00'	88.00' R2 & R10
L17	N16°59'15"W	50.00'	50.00 R2 & R10
L18	N29°42'02"E	94.61'	94.61' R2 & R10
L19	N70°21'14"E	64.43'	-----
L20	N70°21'14"E	75.83'	-----

RS 99-02-1012
RSB 178/8-31

STATE OF CALIFORNIA

PARCEL 300277-4
INST. NO 19980702665 O.R.
INST. NO 19980694409 O.R.

PORTION OF LOTS 392, 393 &
398 BLK 152 OF IRVINE
SUBDIVISION

PARCEL 3 OF LOT LINE
ADJUSTMENT LL-2003-007,
INST. NO. 200300416458

STATE OF CALIFORNIA

PARCEL 12018-1
INST. NO 93-0723551 O.R.

PORTOLA PARKWAY (NORTH)
N70°21'14"E 800.13' (800.13' R10)

RS 94-1016
RSB 151/19-23

CURVE TABLE						
CURVE #	DELTA	RADIUS	LENGTH	RECORD DELTA	RECORD RADIUS	RECORD LENGTH
C1	2°01'38"	2049.90'	72.53'	2°01'37" R1	2050.00' R1	(72.52' R1) (72.92' R9)
C2	2°30'10"	1999.89'	87.35'	2°30'25" R3	1999.87' R3	(87.50' R3), (C 87.25' R4)
C3	0°57'16"	1999.89'	33.32'	0°31'07" R1	2000.00' R1	33.23' R1
C4	2°39'31"	1999.89'	92.80'	02°39'31" R3	1999.87' R3	92.80' R3

LEGEND

- FOUND MONUMENT AS NOTED
- ⊗ S.F.N. — SEARCHED, FOUND NOTHING
- ⊠ CALC FROM RECORD MAP
- C CALCULATED
- R RADIAL

0' 20' 40' 80' 120'

SCALE: 1" = 40'

U.S. Survey
Foot

OC Public Works
OC Survey/Field Services
Boundary Analysis & Mapping

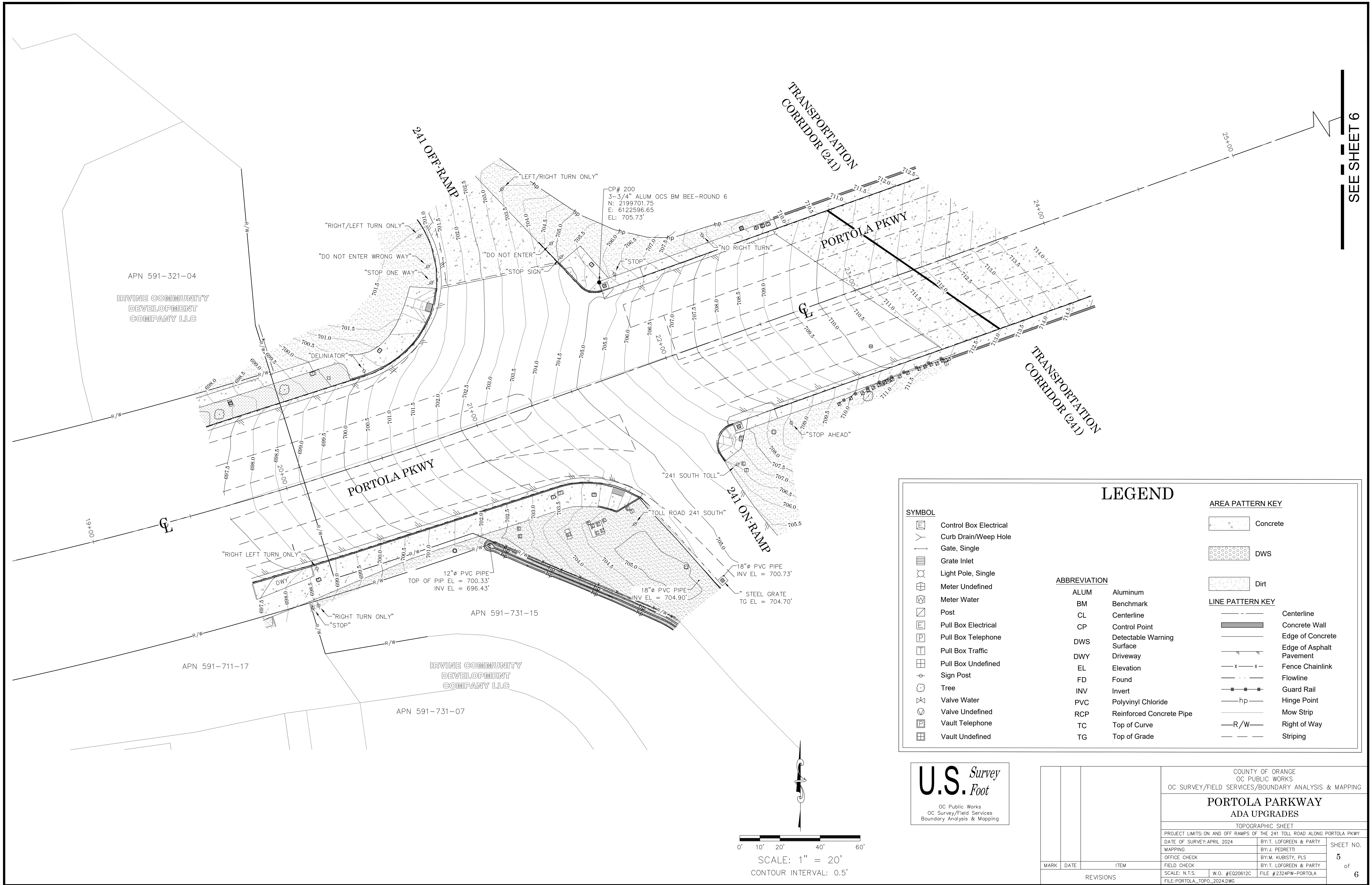
COUNTY OF ORANGE
OC PUBLIC WORKS
OC SURVEY/FIELD SERVICES/BOUNDARY ANALYSIS & MAPPING

PORTOLA PARKWAY
ADA UPGRADES

BOUNDARY MAP

PROJECT LIMITS: ON AND OFF RAMP OF THE 241 TOLL ROAD ALONG PORTOLA PKWY

DATE OF SURVEY: APRIL 2024		BY: T. LOFGREEN & PARTY	SHEET NO. 4 of 6
MAPPING		BY: T. LOFGREEN	
OFFICE CHECK		BY: M. KUBISTY, PLS	
FIELD CHECK		BY: T. LOFGREEN & PARTY	
SCALE: 1" = 40'	W.O. #EQ20612C	FILE # 2324PW-PORTOLA	6
FILE: PORTOLA#241 BOUNDARY.DWG			



SYMBOL

	Control Box Electrical
	Curb Drain/Weep Hole
	Gate, Single
	Grate Inlet
	Light Pole, Single
	Meter Undefined
	Meter Water
	Post
	Pull Box Electrical
	Pull Box Telephone
	Pull Box Traffic
	Pull Box Undefined
	Sign Post
	Tree
	Valve Water
	Valve Undefined
	Vault Telephone
	Vault Undefined

ABBREVIATION

ALUM	Aluminum
BM	Benchmark
CL	Centerline
CP	Control Point
DWS	Detectable Warning Surface
DWY	Driveway
EL	Elevation
FD	Found
INV	Invert
PVC	Polyvinyl Chloride
RCP	Reinforced Concrete Pipe
TC	Top of Curve
TG	Top of Grade

AREA PATTERN KEY

	Concrete
	DWS
	Dirt

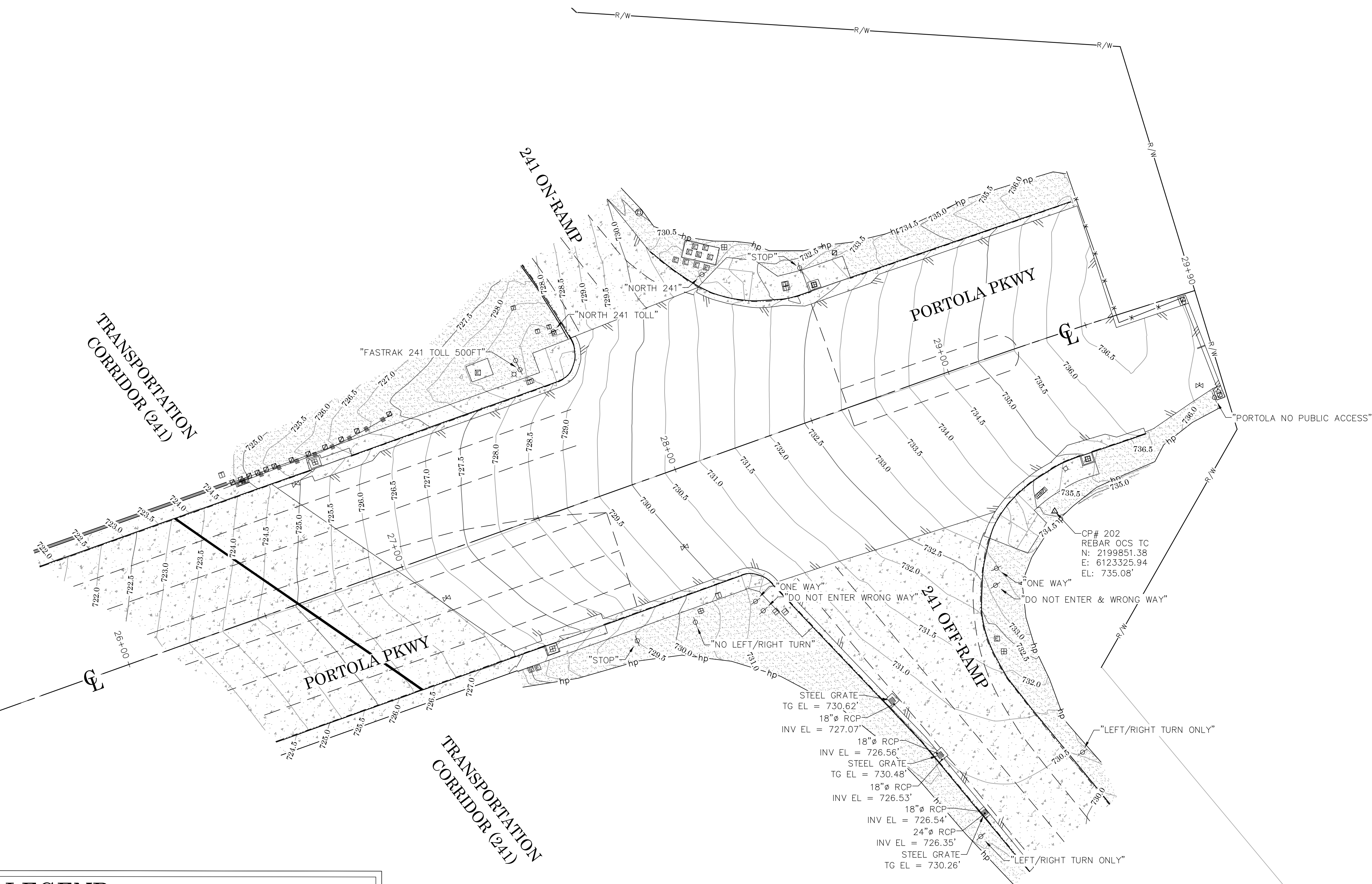
LINE PATTERN KEY

	Centerline
	Concrete Wall
	Detectable Warning
	Edge of Concrete
	Edge of Asphalt
	Fence Chainlink
	Flowline
	Guard Rail
	Hinge Point
	Mow Strip
	Right of Way
	Striping

U.S. Survey
Foot
OC Public Works
OC Survey/Field Services
Boundary Analysis & Mapping

		COUNTY OF ORANGE OC PUBLIC WORKS OC SURVEY/FIELD SERVICES/BOUNDARY ANALYSIS & MAPPING				
		PORTOLA PARKWAY ADA UPGRADES				
		TOPOGRAPHIC SHEET				
		PROJECT LIMITS: ON AND OFF RAMP OF THE 241 TOLL ROAD ALONG PORTOLA PKWY				
		DATE OF SURVEY: APRIL 2024		BY: J. LOFGREEN & PARTY		SHEET NO. 5 of 6
		MAPPING		BY: J. PEDRETTI		
		OFFICE CHECK		BY: M. KUBISTY, PLS		
FIELD CHECK		BY: T. LOFGREEN & PARTY				
SCALE: N.T.S.		W.O. #EQ20612C				
FILE: PORTOLA_TOPO_2024.DWG		FILE # 2324PW-PORTOLA				
MARK	DATE	ITEM		REVISIONS		

SEE SHEET 5



APN 104-144-52

IRVINE COMMUNITY
DEVELOPMENT
COMPANY LLC

LEGEND

SYMBOL

- Control Box Electrical
- Curb Drain/Weep Hole
- Gate, Single
- Grate Inlet
- Light Pole, Single
- Meter Undefined
- Meter Water
- Post
- Pull Box Electrical
- Pull Box Telephone
- Pull Box Traffic
- Pull Box Undefined
- Sign Post
- Tree
- Valve Water
- Valve Undefined
- Vault Telephone
- Vault Undefined

ABBREVIATION

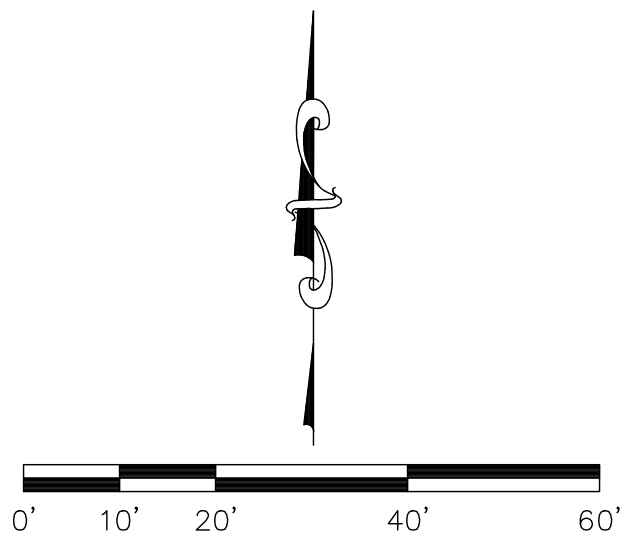
- | | |
|------|----------------------------|
| ALUM | Aluminum |
| BM | Benchmark |
| CL | Centerline |
| CP | Control Point |
| DWS | Detectable Warning Surface |
| DWY | Driveway |
| EL | Elevation |
| FD | Found |
| INV | Invert |
| PVC | Polyvinyl Chloride |
| RCP | Reinforced Concrete Pipe |
| TC | Top of Curve |
| TG | Top of Grade |

AREA PATTERN KEY

- | | |
|--|----------|
| | Concrete |
| | DWS |
| | Dirt |

LINE PATTERN KEY

- | | |
|--|--------------------------|
| | Centerline |
| | Concrete Wall |
| | Edge of Concrete |
| | Edge of Asphalt Pavement |
| | Fence Chainlink |
| | Flowline |
| | Guard Rail |
| | Hinge Point |
| | Mow Strip |
| | Right of Way |
| | Striping |



U.S. Survey
Foot
OC Public Works
OC Survey/Field Services
Boundary Analysis & Mapping

		COUNTY OF ORANGE OC PUBLIC WORKS OC SURVEY/FIELD SERVICES/BOUNDARY ANALYSIS & MAPPING			
		PORTOLA PARKWAY ADA UPGRADES			
		TOPOGRAPHIC SHEET			
		PROJECT LIMITS: ON AND OFF RAMP OF THE 241 TOLL ROAD ALONG PORTOLA PKWY			
		DATE OF SURVEY: APRIL 2024		BY: T. LOFGREEN & PARTY	
MARK	DATE	ITEM	MAPPING		SHEET NO. 6 of 6
			OFFICE CHECK		
			FIELD CHECK		
			SCALE: N.T.S.		
			FILE: PORTOLA_TOPO_2024.DWG		
		W.O. #EQ20612C		FILE #2324PW-PORTOLA	
		REVISIONS			