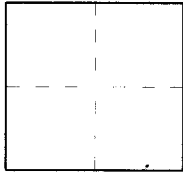


CORNER RECORD

Document Number 2010-2458 BCity of Costa MesaCounty of Orange, CaliforniaBrief Legal Description Bear Street & St. Clair Street

CORNER TYPE

Government Corner ☐ Control ☒
Meander ☐ Property ☐
Rancho ☐ Other ☐

Date of Survey 3/04/10

COORDINATES (Optional)

N. _____
E. _____
Zone _____ NAD27 ☐ NAD83 ☐
NAD83 Epoch _____
Elev. _____
Vert. Datum: NGVD29 ☐ NAVD88 ☐
Meas. Units: Metric ☐ Imperial ☐
U.S. Survey foot ☒

Corner — Left as found ☐ Found and tagged ☐ Established ☐ Reestablished ☒ Rebuilt ☐

Identification and type of corner found; Evidence used to identify or procedure used to establish or reestablish the corner:
Found and described on the reverse of this sheet.

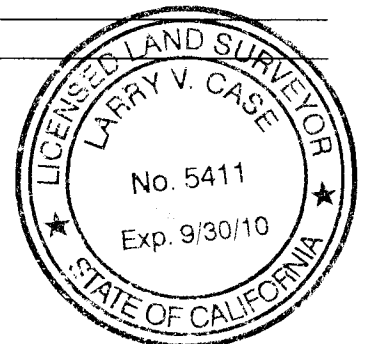
A description of the physical condition of the monument as found and as set or reset: _____

See sheet #2

SURVEYOR'S STATEMENT

This Corner Record was prepared by me or under my direction in conformance with
the Land Surveyor's Act on August 2, 2010

Signed [Signature] P.L.S. or R.C.E. No. LS 5411



COUNTY SURVEYOR'S STATEMENT

This Corner Record was received AUG 27 2010
and examined and filed SEP 15 2010

Signed [Signature] P.L.S. or R.C.E. No. 7212

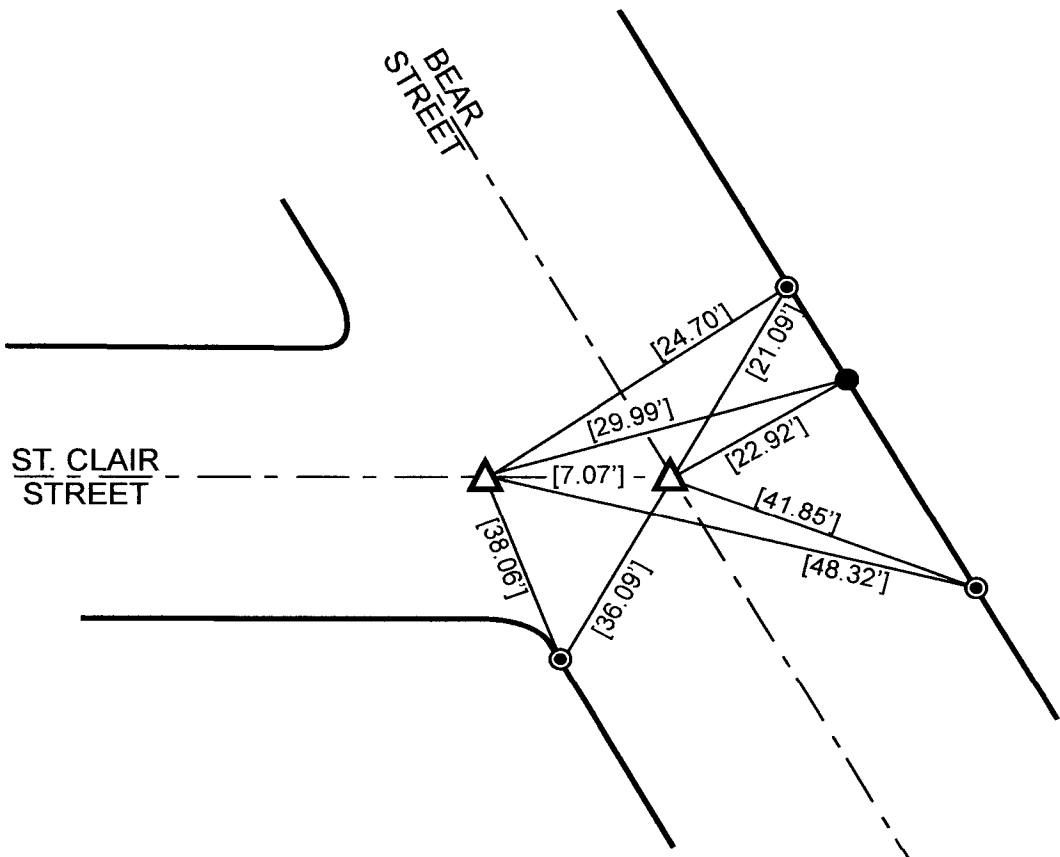
Title DEPUTY COUNTY SURVEYOR



County Surveyor's Comment _____



REFERENCE
R1: CR 2010-1532 A



△ = SET GEAR SPIKE & WASHER W/ TAG LS 5411 PER R1
AFTER CONSTRUCTION

● = FD L/T IN T.C. W/ "CAL TRANS" PER R1
AFTER CONSTRUCTION

⊙ = FD L/T IN T.C. W/ TAG STAMPED LS 5411 PER R1
AFTER CONSTRUCTION

[] = MEASURED & RECORD DISTANCE PER R1

**NOTE: THESE TIES ARE FOR THE PURPOSE OF
PERPETUATING THE FOUND MONUMENTATION
PURSUANT TO THE PLS ACT SECTION 8771. NO
CLAIM IS MADE AS TO THE RELATIONSHIP OF THE
POINTS OR LINES SHOWN HEREON
TO THE TRUE BOUNDARY LOCATIONS. 09-RJN-460**