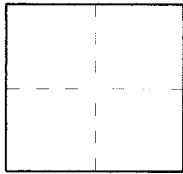


# CORNER RECORD

Document Number 2010-2457 BCity of Costa MesaCounty of Orange, CaliforniaBrief Legal Description Bear Street 245'+/- to PRC

## CORNER TYPE

Government Corner ☐ Control ☒  
Meander ☐ Property ☐  
Rancho ☐ Other ☐

Date of Survey 3/04/10

## COORDINATES (Optional)

N. \_\_\_\_\_  
E. \_\_\_\_\_  
Zone \_\_\_\_\_ NAD27 ☐ NAD83 ☐  
NAD83 Epoch \_\_\_\_\_  
Elev. \_\_\_\_\_  
Vert. Datum: NGVD29 ☐ NAVD88 ☐  
Meas. Units: Metric ☐ Imperial ☐  
U.S. Survey foot ☒

Corner — Left as found ☐ Found and tagged ☐ Established ☐ Reestablished ☒ Rebuilt ☐

Identification and type of corner found; Evidence used to identify or procedure used to establish or reestablish the corner:  
Found and described on the reverse of this sheet.

A description of the physical condition of the monument as found and as set or reset: \_\_\_\_\_

See sheet #2

## SURVEYOR'S STATEMENT

This Corner Record was prepared by me or under my direction in conformance with  
the Land Surveyor's Act on August 2, 2010

Signed [Signature] P.L.S. or R.C.E. No. LS 5411

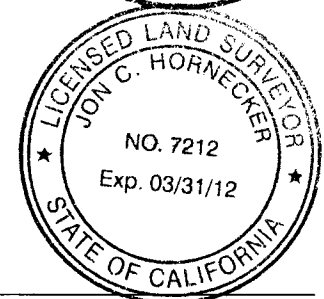
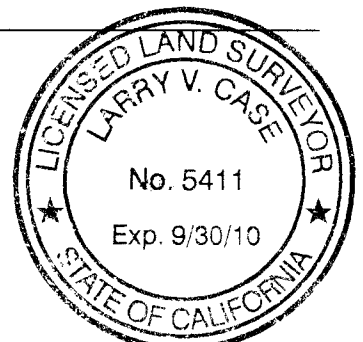
## COUNTY SURVEYOR'S STATEMENT

This Corner Record was received AUG 27 2010  
and examined and filed SEP 15 2010

Signed [Signature] P.L.S. or R.C.E. No. 7212

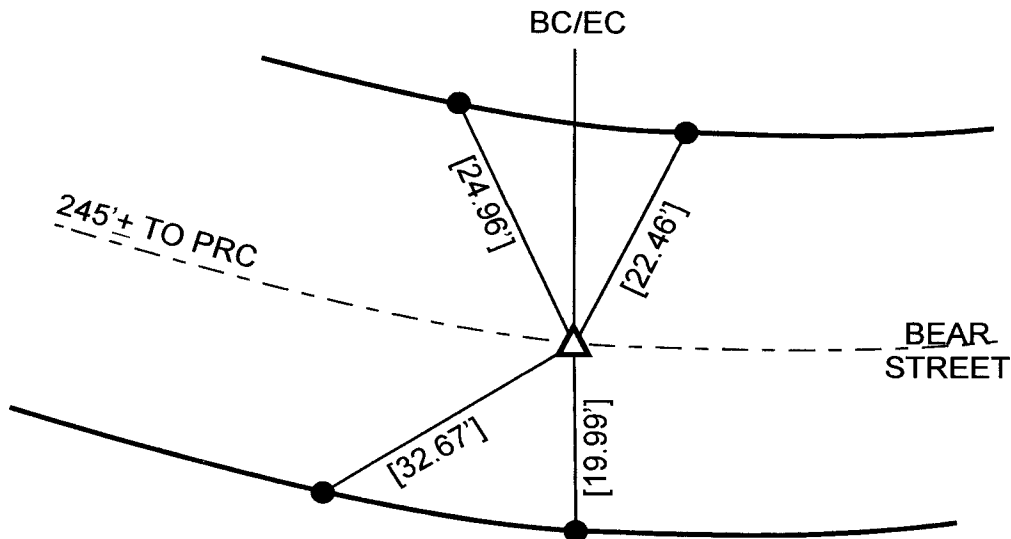
Title DEPUTY COUNTY SURVEYOR

County Surveyor's Comment \_\_\_\_\_





REFERENCE  
R1: CR 2010-1533 A



**△** = SET GEAR SPIKE & WASHER W/ TAG STAMPED LS 5411 PER R1  
AFTER CONSTRUCTION

**●** = FD L/T IN T.C. W/ TAG STAMPED LS 5411 PER R1  
AFTER CONSTRUCTION

**[ ]** = MEASURED & RECORD DISTANCE PER R1

**NOTE: THESE TIES ARE FOR THE PURPOSE OF  
PERPETUATING THE FOUND MONUMENTATION  
PURSUANT TO THE PLS ACT SECTION 8771. NO  
CLAIM IS MADE AS TO THE RELATIONSHIP OF THE  
POINTS OR LINES SHOWN HEREON  
TO THE TRUE BOUNDARY LOCATIONS. 09-RJN-460**