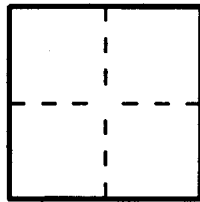


# CORNER RECORD

Document Number 2008-3060 BCity of Costa Mesa County of Orange, CaliforniaBrief Legal Description Baker Street @ Mendoza Drive (GPS 6128) & Grant Avenue

## CORNER TYPE

Government Corner ☐ Control ☒  
Meander ☐ Property ☐  
Rancho ☐ Other ☐

Date of Survey 10/06/2008

## COORDINATES (Optional)

N. \_\_\_\_\_  
E. \_\_\_\_\_  
Zone \_\_\_\_\_ NAD27 ☐ NAD83 ☐  
NAD83 Epoch \_\_\_\_\_  
Elevation \_\_\_\_\_  
Vertical Datum: NGVD29 ☐ NAVD88 ☐  
Units: Metric ☐ Imperial ☐ U.S. Survey ☐

Corner — Left as found ☐ Found and tagged ☐ Established ☐ Reestablished ☒ Rebuilt ☐

Identification and type of corner found; Evidence used to identify or procedure used to establish or reestablish the corner:

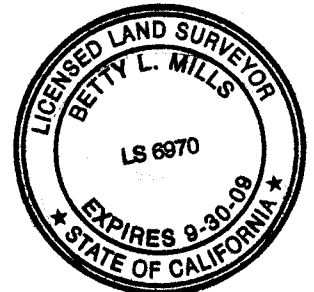
Set per Corner Record 2008-2231A

A description of the physical condition of the monument as found and as set or reset: \_\_\_\_\_

These ties are for the purpose of perpetuating the found monumentation. No claim is  
made as to the relationship of the points or lines shown hereon to true boundary locations.

## SURVEYOR'S STATEMENT

This Corner Record was prepared by me or under my direction in conformance with  
the Professional Land Surveyors Act on December 6, 2008

Signed Betty L. Mills P.L.S. or R.C.E. No. 6970

## COUNTY SURVEYOR'S STATEMENT

This Corner Record was received DEC 10 2008  
examined and filed JAN 08 2009

Signed [Signature] P.L.S. or R.C.E. No. 7212Title DEPUTY COUNTY SURVEYOR

County Surveyor's Comment \_\_\_\_\_

● SET GEAR SPIKE & WASHER (LS 6970) TO  
REPLACE CONCRETE NAIL FOUND PER CORNER  
RECORD 2008-2231A FOR GPS 6128 AND  
DESTROYED DURING CONSTRUCTION 10/6/2008

● FOUND L,T&T (DCS TIE) IN TC PER CORNER  
RECORD 2008-2231A

⊗ FOUND CHIS "+" IN TC PER CORNER RECORD  
2008-2231A

■ FOUND L,T&T (LS 6970 TIE) IN TC

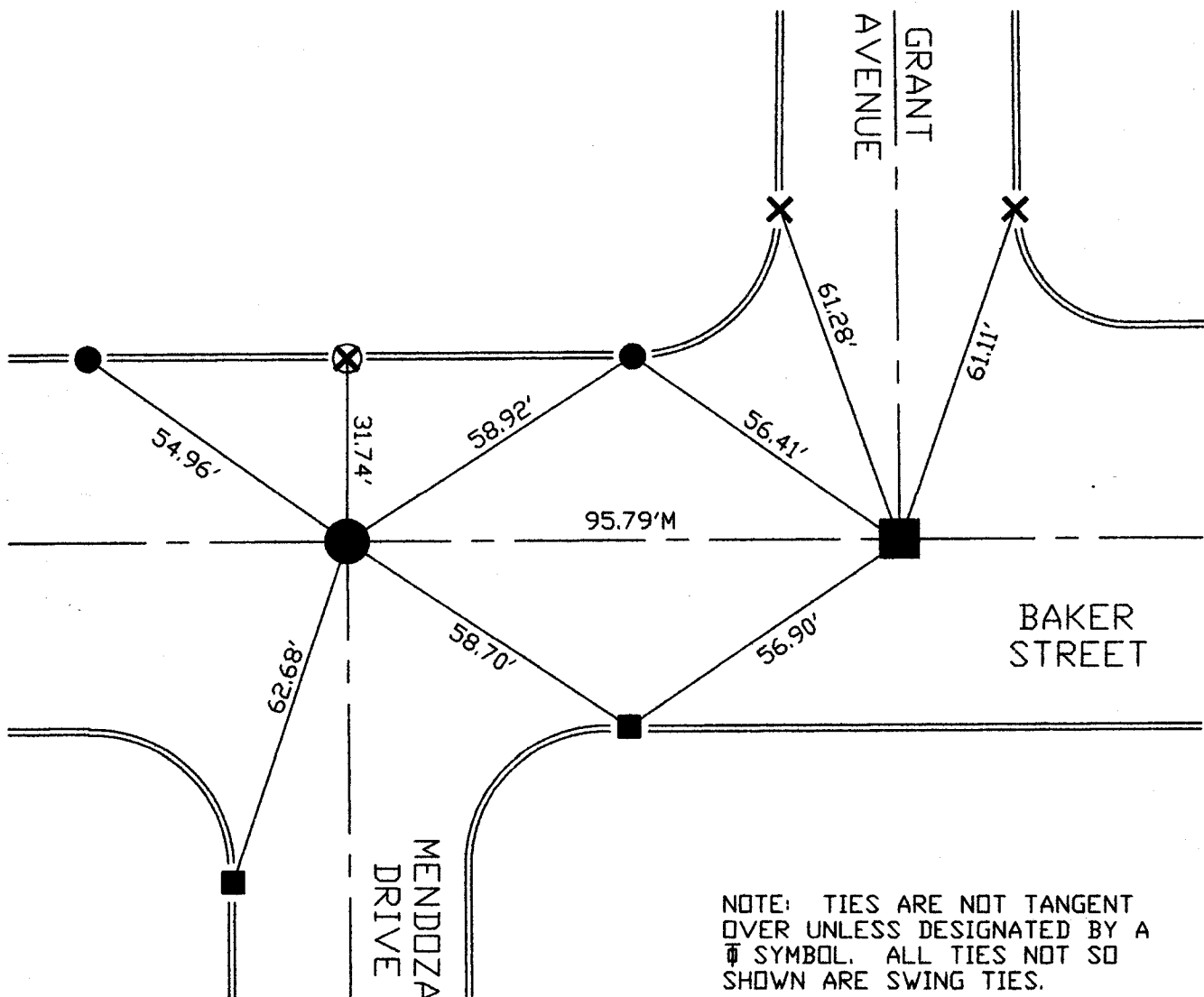
■ SET MAG NAIL & WASHER (LS 6970) PER CORNER  
RECORD 2008-2231A

⊗ FOUND CHIS "+" PER CORNER RECORD 2008-2231A

POST CONSTRUCTION



SCALE 1"=30'



NOTE: TIES ARE NOT TANGENT  
OVER UNLESS DESIGNATED BY A  
⊕ SYMBOL. ALL TIES NOT SO  
SHOWN ARE SWING TIES.