

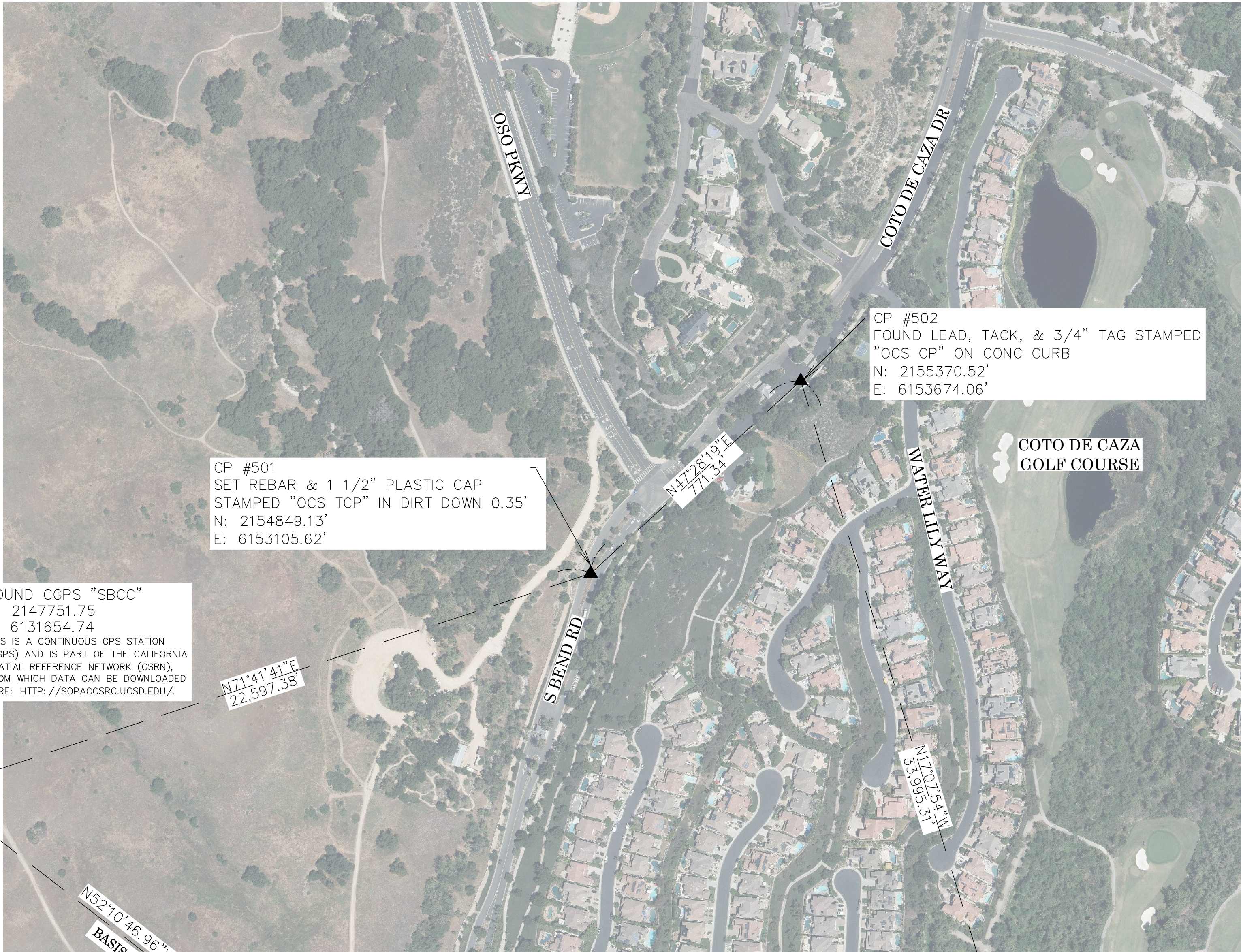
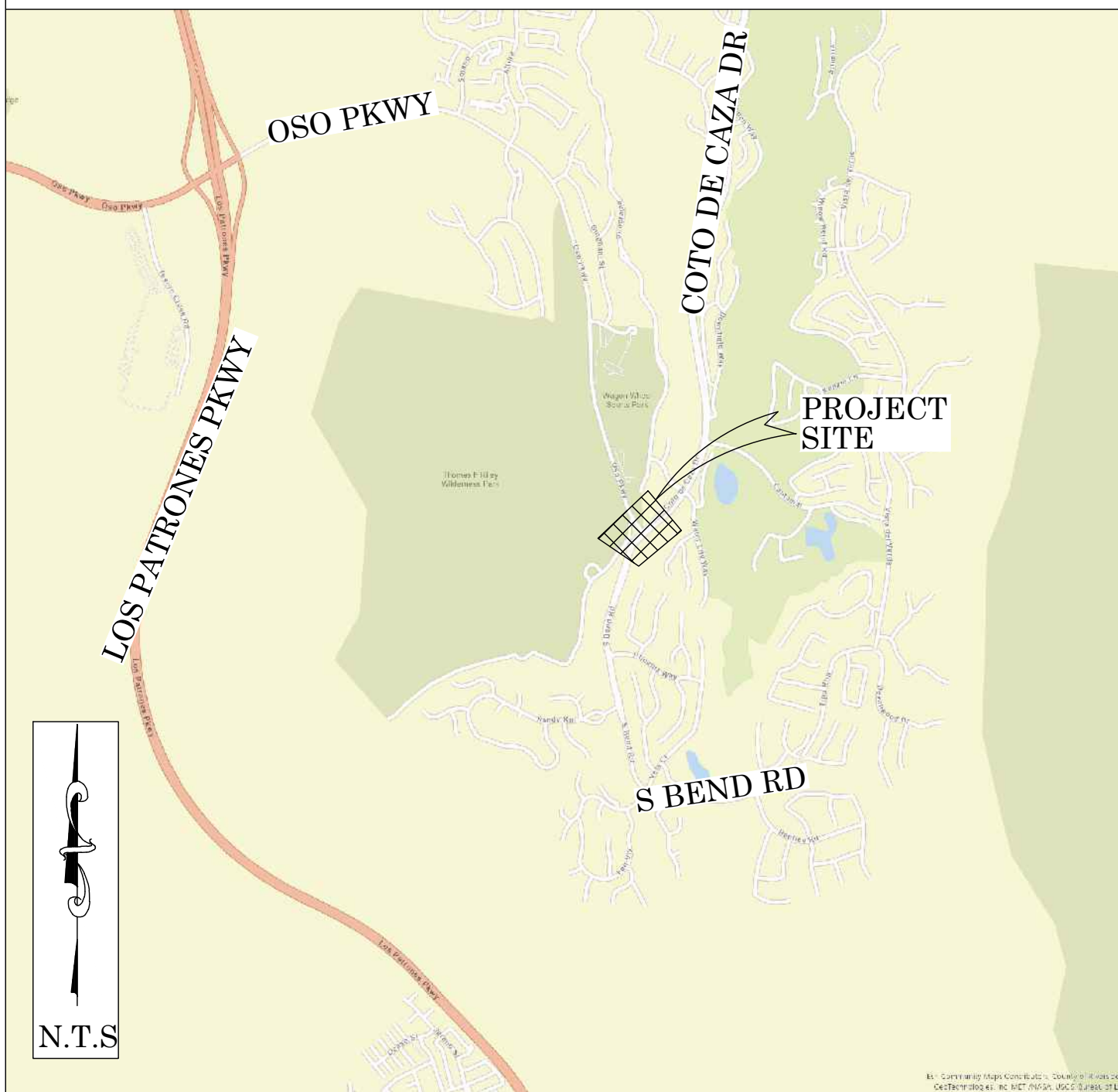


OC PUBLIC WORKS DEPARTMENT
JAMES TREADAWAY, DIRECTOR OF PUBLIC WORKS
KEVIN HILLS, COUNTY SURVEYOR
OSO PKWY AT COTO DE CAZA



SIGNAL INSTALLATION

LOCATION MAP



BASIS OF BEARINGS

THE BASIS OF BEARINGS FOR THIS SURVEY IS BASED ON THE CALIFORNIA COORDINATE SYSTEM (CCS83), ZONE VI, NAD 83, OCS (2017.50) EPOCH ADJUSTMENT, AS DETERMINED LOCALLY BY A LINE BETWEEN CONTINUOUS GLOBAL POSITIONING STATIONS CCGPS STATIONS (RMVJ) AND (SBCC) BEING NORTH 52°10'46.96\"/>

HORIZONTAL DATUM

COORDINATES SHOWN ARE BASED ON THE CALIFORNIA COORDINATE SYSTEM (CCS83), ZONE VI, NAD 83, OCS (2017.50) EPOCH ADJUSTMENT.
ALL DISTANCES SHOWN ARE GRID, UNLESS OTHERWISE NOTED. TO OBTAIN GROUND DISTANCES MULTIPLY GRID BY A COMBINED FACTOR OF 1.00005820.
THIS COMBINATION FACTOR WAS HELD AT: CP# 501
N: 2154849.13' E: 6153105.62' EL: 548.85'
ALL DISTANCES ARE BASED ON THE U.S. SURVEY FOOT.

VERTICAL DATUM

O.C.S. BM. 3EE-31-99 ELEV. = 548.782' YEAR LEVELED: 1999
NAVD 1988 (O.C.S. 1995 ADJUSTMENT)
DESCRIPTION: DESCRIBED BY OCS 2003 - FOUND 3 3/4\"/>

NOTES

THE SURVEY INFORMATION SHOWN HEREON IS TO BE USED FOR TOPOGRAPHIC RELATIONSHIPS ONLY AND IS NOT INTENDED FOR LAND ACQUISITION OR BOUNDARY PURPOSES.

SHEET INDEX

SHEET	NO.	DESCRIPTION
1	2-3	BOUNDARY MAP
2-3	4-6	TOPOGRAPHIC MAP

PURPOSE OF SURVEY

THE PURPOSE OF THE SURVEY IS TO PROVIDE A TOPOGRAPHIC MAP AND RIGHT OF WAY ESTABLISHMENT FOR THIS INTERSECTION AT OSO PARKWAY AND COTO DE CAZA DR.

SENIOR LAND SURVEYOR'S CERTIFICATE:

THIS MAP CORRECTLY REPRESENTS A SURVEY MADE BY ME OR UNDER MY DIRECTION IN CONFORMANCE WITH REQUIREMENTS OF THE PROFESSIONAL LAND SURVEYORS' ACT; THIS 1 DAY OF FEBRUARY, 2023.

JESOM MORENO, PLS.

SENIOR LAND SURVEYOR



SENIOR LAND SURVEYOR'S CERTIFICATE:

THIS MAP CORRECTLY REPRESENTS A SURVEY MADE BY ME OR UNDER MY DIRECTION IN CONFORMANCE WITH REQUIREMENTS OF THE PROFESSIONAL LAND SURVEYORS' ACT; THIS 1 DAY OF FEBRUARY, 2023.

HANNA AFTIM, PLS.

SENIOR LAND SURVEYOR



U.S. Survey Foot

OC Public Works
OC Survey/Field Services
Boundary Analysis & Mapping

TOPOGRAPHIC MAPPING PROJECT

FOUND CGPS "RMVJ"
N: 2122883.61
E: 6163688.13
THIS IS A CONTINUOUS GPS STATION (CGPS) AND IS PART OF THE CALIFORNIA SPATIAL REFERENCE NETWORK (CSRN), FROM WHICH DATA CAN BE DOWNLOADED HERE: [HTTP://SOPACCSRC.UCSD.EDU/](http://SOPACCSRC.UCSD.EDU/).

		COUNTY OF ORANGE OC PUBLIC WORKS OC SURVEY/FIELD SERVICES/BOUNDARY ANALYSIS & MAPPING		OSO PKWY AT COTO DE CAZA SIGNAL INSTALLATION	
				TITLE SHEET	
				PROJECT LIMITS: AT THE INTERSECTION OF OSO PARKWAY AND COTO DE CAZA DR	
				DATE OF SURVEY: 12/19/2022	
MAPPING		BY: J. PEDRETTI			
OFFICE CHECK		BY: J. MORENO, PLS			
FIELD CHECK		BY: J. MORENO, PLS			
MARK	DATE	ITEM	SCALE: N.T.S.	W.O. #E023001P	FILE # 2223PW-CM0011
REVISIONS			FILE: COTO DE CAZA_TOPO_2022.DWG		

MONUMENT NOTES

- 1

FOUND BOAT SPIKE & 1–1/2” WASHER STAMPED "LS 4965", PER (R1), FLUSH IN AC, ACCEPTED AS THE CENTERLINE INTERSECTION OF OSO PARKWAY AND COTO DE CAZA DR
- 2

FOUND BOAT SPIKE & 1–1/2” WASHER STAMPED "LS 4965", PER (R1), FLUSH IN AC, ACCEPTED AS THE EC ALONG THE CENTERLINE OF CROWN VALLEY PARKWAY
- 3

FOUND BOAT SPIKE & 1–1/2” WASHER STAMPED "LS 4965", PER (R2), FLUSH IN AC, ACCEPTED AS A POINT ON THE CENTERLINE OF OSO PARKWAY, N32°49'22"W 0.34’ FROM BC CENTERLINE OF OSO PARKWAY
- 4

FOUND BOAT SPIKE & 1–1/2” WASHER STAMPED "LS "4965", PER R2, FLUSH IN AC, ACCEPTED AS A POINT ON THE CENTERLINE OF OSO PARKWAY, S17°19'57"E 0.07’ FROM THE EC CENTERLINE OF OSO PARKWAY
- 5

FOUND BOAT SPIKE & 1–1/2” WASHER STAMPED "LS 4965", PER R2, FLUSH IN AC, ACCEPTED AS A POINT ON THE CENTERLINE OF OSO PARKWAY
- 6

FOUND LEAD TACK & 3/4” TAG STAMPED "LS 4965", PER (R1), ON CONCRETE CURB, ACCEPTED AS AN ANGLE POINT ON THE RIGHT OF WAY OF OSO PARKWAY
- 7

FOUND BOAT SPIKE & 1–1/2” WASHER STAMPED "LS 4965", PER (R1), FLUSH IN AC, N71°43’00"W FROM THE CENTERLINE OF OSO PARKWAY AND AN ANGLE POINTON THE GENERAL NW’LY LINE OF LOT F PER R1
- 8

FOUND BOAT SPIKE & 1–1/2” WASHER STAMPED "LS4965", PER (R1), FLUSH IN AC, N57°10'38"E 0.04’ FROM THE CENTERLINE OF OSO PARKWAY AND AN ANGLE POINT ON THE GENERAL NW’LY LINE OF LOT F PER R1
- 9

FOUND LEAD TACK & 3/4” TAG STAMPED "LS 4965", PER (R1), ON CONCRETE CURB, S82°26'56"W 0.10’ FROM THE E’LY RIGHT OF WAY LINE OF OSO PARKWAY AND AN ANGLE POINT ON THE GENERAL NW’LY LINE OF LOT F PER R1
- 10

FOUND LEAD TACK & 3/4” TAG STAMPED "LS 4965", PER (R1), S42°51'38" 0.13’ FROM THE NW’LY RIGHT OF WAY LINE OF COTO DE CAZA DR AND AN ANGLE POINT ON THE GENERAL NW’LY LINE OF LOT F PER R1
- 11

FOUND BOAT SPIKE & 1–1/2” WASHER STAMPED "LS 4965", PER (R1), S42°51'38"E 0.30’ FROM THE N’LY RIGHT OF WAY OF COTO DE CAZA DR
- 12

FOUND 2 INCH IRON PIPE WITH LEAD TACK AND 3/4” WASHER STAMPED "LS 4965", PER (R1), DOWN 0.40’ IN DIRT, S42°51'38"E 0.08 FEET FROM THE N’LY RIGHT OF WAY OF CROWN VALLEY PARKWAY
- 13

FOUND 2 INCH IRON PIPE WITH TACK AND 3/4” WASHER STAMPED "RCE 29243", PER (R3), DOWN 0.10 FEET IN DIRT, S83°51'27" 0.33’ FROM THE POINT OF NON–TANGENT CURVE ALONG THE NW’LY RIGHT OF WAY LINE OF SOUTH BEND RD
- 14

FOUND LEAD TACK & 3/4” TAG STAMPED "RCE 29243", PER (R3), ON CONCRETE CURB, N84°32'09"E 0.14’ FROM THE BC CENTERLINE OF SOUTH BEND RD

ESTABLISHMENT NOTES

- A

ESTABLISHED THE CENTERLINE OF CROWN VALLEY PARKWAY BY HOLDING A LINE BETWEEN MONUMENT NOTES 1 AND 2
- B

ESTABLISHED THE CENTERLINE OF OSO PARKWAY BY HOLDING A LINE BETWEEN MONUMENT NOTES 1 AND 3
- C

ESTABLISHED THE CENTERLINE OF OSO PARKWAY BY HOLDING A LINE BETWEEN MONUMENT NOTES 4 AND 5
- D

ESTABLISHED THE CENTERLINE OF OSO PARKWAY BY HOLDING A RECORD RADIUS OF 1400.00 FEET PER R2 AND TANGENT TO LINE ESTABLISHMENT NOTES B AND C
- E

ESTABLISHED THE CENTERLINE OF COTO DE CAZA BY PROLONGATION OF ESTABLISHMENT NOTE B NE’LY FROM MONUMENT NOTE 1 A RECORD DISTANCE OF 407.75 FEET PER R1
- F

ESTABLISHED THE CENTERLINE EC ALONG SOUTH BEND RD BY HOLDING A RECORD DISTANCE OF 60.00 FEET PER R3 SW’LY ALONG SOUTH BEND RD FROM MONUMENT NOTE 1
- G

ESTABLISHED THE CENTERLINE OF SOUTH BEND RD BY HOLDING RECORD CURVATURE INFORMATION PER R3 SW’LY FROM ESTABLISHMENT NOTE D AND TANGENT TO ESTABLISHMENT NOTE A
- H

ESTABLISHED THE CENTERLINE ALONG SOUTH BEND RD BY HOLDING A LINE TANGENT TO ESTABLISHMENT NOTE G FROM THE CENTERLINE BC AND HOLDING A RECORD DISTANCE OF 320.00 FT PER R3
- I

ESTABLISHED THE W’LY RIGHT OF WAY OF OSO PARKWAY BY HOLDING A LINE PARALLEL WITH, AND A RECORD DISTANCE OF 40.00 FEET PER R2 FROM LINE ESTABLISHMENT NOTES B, D AND C
- J

ESTABLISHED THE E’LY RIGHT OF WAY OF OSO PARKWAY BY HOLDING A LINE PARALLEL WITH, AND A RECORD DISTANCE OF 40.00 FEET PER R2 FROM LINE ESTABLISHMENT NOTES B, D AND C
- K

ESTABLISHED THE NW’LY RIGHT OF WAY OF CROWN VALLEY PARKWAY BY HOLDING A LINE PARALLEL WITH, AND A RECORD DISTANCE OF 42.00 FEET PER R1 FROM ESTABLISHMENT NOTE A
- L

ESTABLISHED A POINT ON THE N’LY RIGHT OF WAY OF CROWN VALLEY PARKWAY BY HOLDING A POINT ALONG ESTABLISHMENT NOTE K AND PERPENDICULAR TO MONUMENT NOTE 2
- M

ESTABLISHED A POINT ON THE CENTERLINE OF COTO DE CAZA DR BY HOLDING A RECORD DISTANCE OF 54.99 FT PER R3 ALONG ESTABLISHMENT NOTE A, SWLY FROM MONUMENT NOTE 1
- N

ESTABLISHED THE ANGLE POINT ALONG THE N’LY RIGHT OF WAY OF COTO DE CAZA BY HOLDING A POINT ALONG ESTABLISHMENT NOTE K PERPENDICULAR TO ESTABLISHMENT NOTE M

- O

ESTABLISHED THE POINT OF NON–TANGENT CURVE ALONG THE NW’LY RIGHT OF WAY OF COTO DE CAZA BY HOLDING A RECORD DISTANCE OF 128.01’ ALONG ESTABLISHMENT NOTE K PER R1 SW’LY FROM ESTABLISHMENT NOTE N
- P

ESTABLISHED THE W’LY RIGHT OF WAY OF SOUTH BEND RD BY HOLDING RECORD CURVATURE INFORMATION PER R3 SW’LY FROM ESTABLISHMENT NOTE O
- Q

ESTABLISHED THE W’LY RIGHT OF WAY OF SOUTH BEND RD BY HOLDING A LINE PARALLEL WITH, AND A RECORD DISTANCE OF 34.00 FEET PER R3 FROM LINE ESTABLISHMENT NOTE H AND A RECORD DISTANCE OF 383.11 FEET PER R3
- R

ESTABLISHED THE E’LY RIGHT OF WAY OF SOUTH BEND RD BY HOLDING A LINE PARALLEL WITH, AND A RECORD DISTANCE OF 76.00 FEET PER R3 FROM LINE ESTABLISHMENT NOTE H
- S

ESTABLISHED THE SW’LY RIGHT OF WAY OF SOUTH BEND RD BY HOLDING A LINE PARALLEL WITH, AND A RECORD DISTANCE OF 59.00 FEET PER R3 FROM LINE ESTABLISHMENT NOTE A
- T

ESTABLISHED THE SE’LY RIGHT OF WAY OF SOUTH BEND RD BY HOLDING A RECORD RADIUS OF 370.00 FEET PER R3 AND TANGENT TO LINE ESTABLISHMENT NOTES R AND S
- U

ESTABLISHED THE NW’LY RIGHT OF WAY OF COTO DE CAZA RD BY HOLDING A LINE PARALLEL WITH, AND A RECORD DISTANCE OF 42.00 FEET PER R1 FROM LINE ESTABLISHMENT NOTE E
- V

ESTABLISHED THE SE’LY RIGHT OF WAY OF COTO DE CAZA RD BY HOLDING A LINE PARALLEL WITH, AND A RECORD DISTANCE OF 56.00 FEET PER R1 FROM LINE ESTABLISHMENT NOTE E
- W

ESTABLISHED A POINT ON THE CENTERLINE OF COTO DE CAZA DR BY HOLDING A RECORD DISTANCE OF 81.08 FEET ER R1 ALONG ESTABLISHMENT NOTE E, NW’LY FROM MONUMENT NOTE 1
- X

ESTABLISHED THE ANGLE POINT ALONG THE NW’LY RIGHT OF WAY OF COTO DE CAZA RD BY HOLDING A POINT ALONG ESTABLISHMENT NOTE U PERPENDICULAR TO ESTABLISHMENT NOTE M
- Y

ESTABLISHED THE ANGLE POINT ALONG THE W’LY RIGHT OF WAY OF OSO PARKWAY BY HOLDING A POINT ALONG ESTABLISHMENT NOTE J PERPENDICULAR TO MONUMENT NOTE 8

BASIS OF BEARINGS

THE BASIS OF BEARINGS FOR THIS SURVEY IS BASED ON THE CALIFORNIA COORDINATE SYSTEM (CCS83), ZONE VI, NAD 83, OCS (2017.50) EPOCH ADJUSTMENT, AS DETERMINED LOCALLY BY A LINE BETWEEN CONTINUOUS GLOBAL POSITIONING STATIONS CGPS STATIONS (RMVJ) AND (SBCC) BEING NORTH 52°10'46.96" WEST AS DERIVED FROM THE COORDINATES PUBLISHED BY THE CALIFORNIA SPATIAL REFERENCE CENTER (CSRC) ALONG WITH DATA SHEETS ON FILE IN THE OFFICE OF THE ORANGE COUNTY SURVEYOR.

HORIZONTAL DATUM

COORDINATES SHOWN ARE BASED ON THE CALIFORNIA COORDINATE SYSTEM (CCS83), ZONE VI, NAD 83, OCS (2017.50) EPOCH ADJUSTMENT.

ALL DISTANCES SHOWN ARE GRID, UNLESS OTHERWISE NOTED. TO OBTAIN GROUND DISTANCE MULTIPLY A GRID DISTANCE BY 1.00005808.

COMBINATION FACTOR WAS HELD AT POINT NUMBER # 501
N: 2154849.13’, E: 6153105.62’, ELEVATION= 548.85’

RECORD DISTANCES SHOWN HEREON ARE AS THEY APPEAR ON THE DOCUMENT OF RECORD. DISTANCES MAY BE EITHER GRID OR GROUND, AS PER SAID RECORD.

ALL DISTANCES ARE BASED ON THE U.S. SURVEY FOOT.

NOTES

ALL BOUNDARY LINES NOT SHOWN IN BOLD ARE FOR GRAPHICAL REPRESENTATION ONLY.

REFERENCE DOCUMENTS IN THE REFERENCE LEGEND ARE LIVE HYPERLINKS TO SAID DOCUMENT.

MONUMENT SYMBOLS CONTAIN LIVE HYPERLINKS TO IMAGES, IF THEY EXIST, OF RESPECTIVE MONUMENT.

REFERENCES

- (R1) = TRACT MAP NO. 13910, MM 637/1–18
- (R2) = TRACT MAP NO. 14021, MM 650/10–16
- (R3) = TRACT MAP NO. 15439, MM 756/6–17
- (R4) = TRACT MAP NO. 15842, MM 794/16–24
- (R5) = TRACT MAP NO. 13574, MM 730/29–37
- (R10) = CORNER RECORD, C.R. 1996–0140

LEGEND

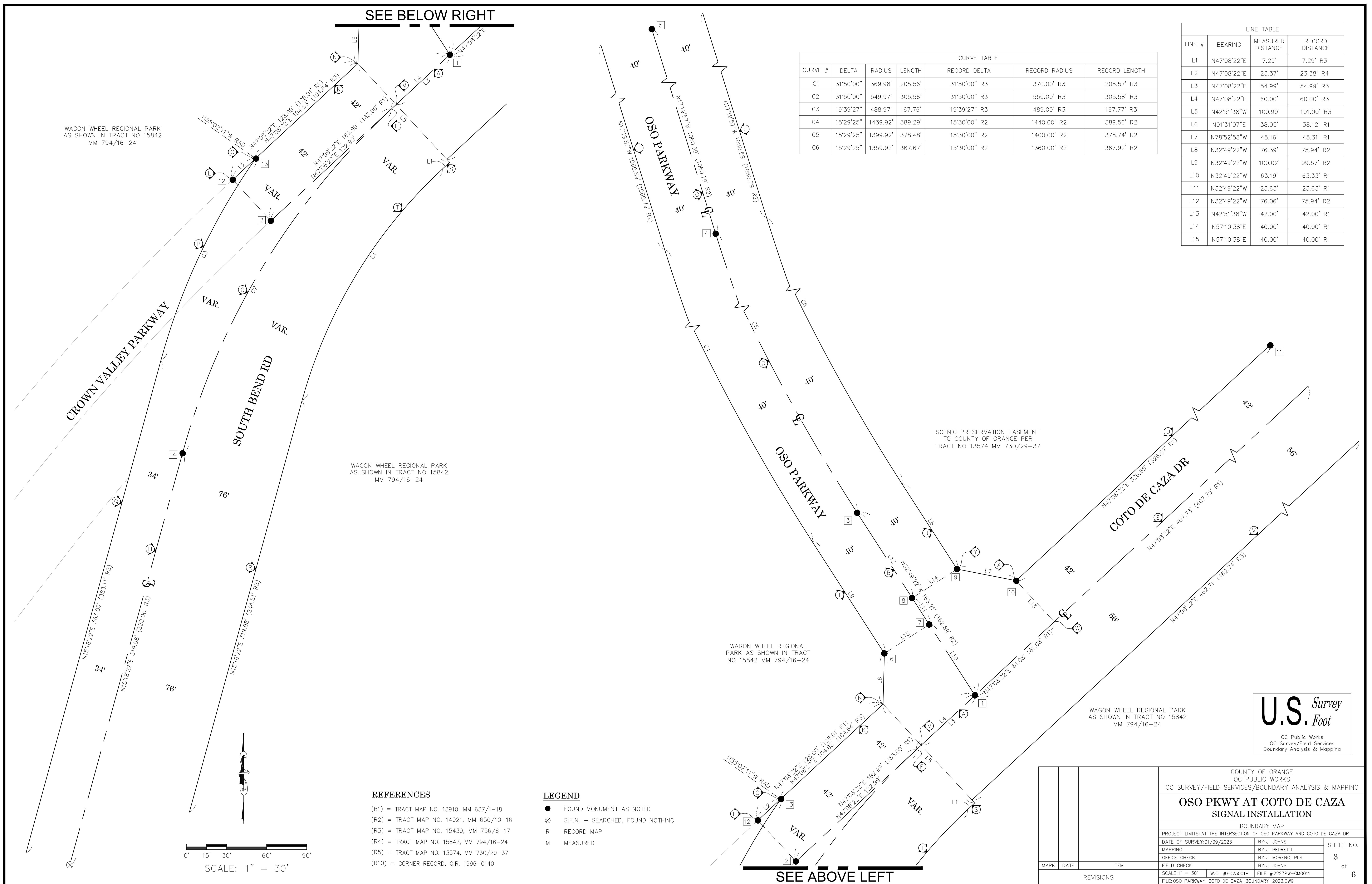
- FOUND MONUMENT AS NOTED
- ⊗

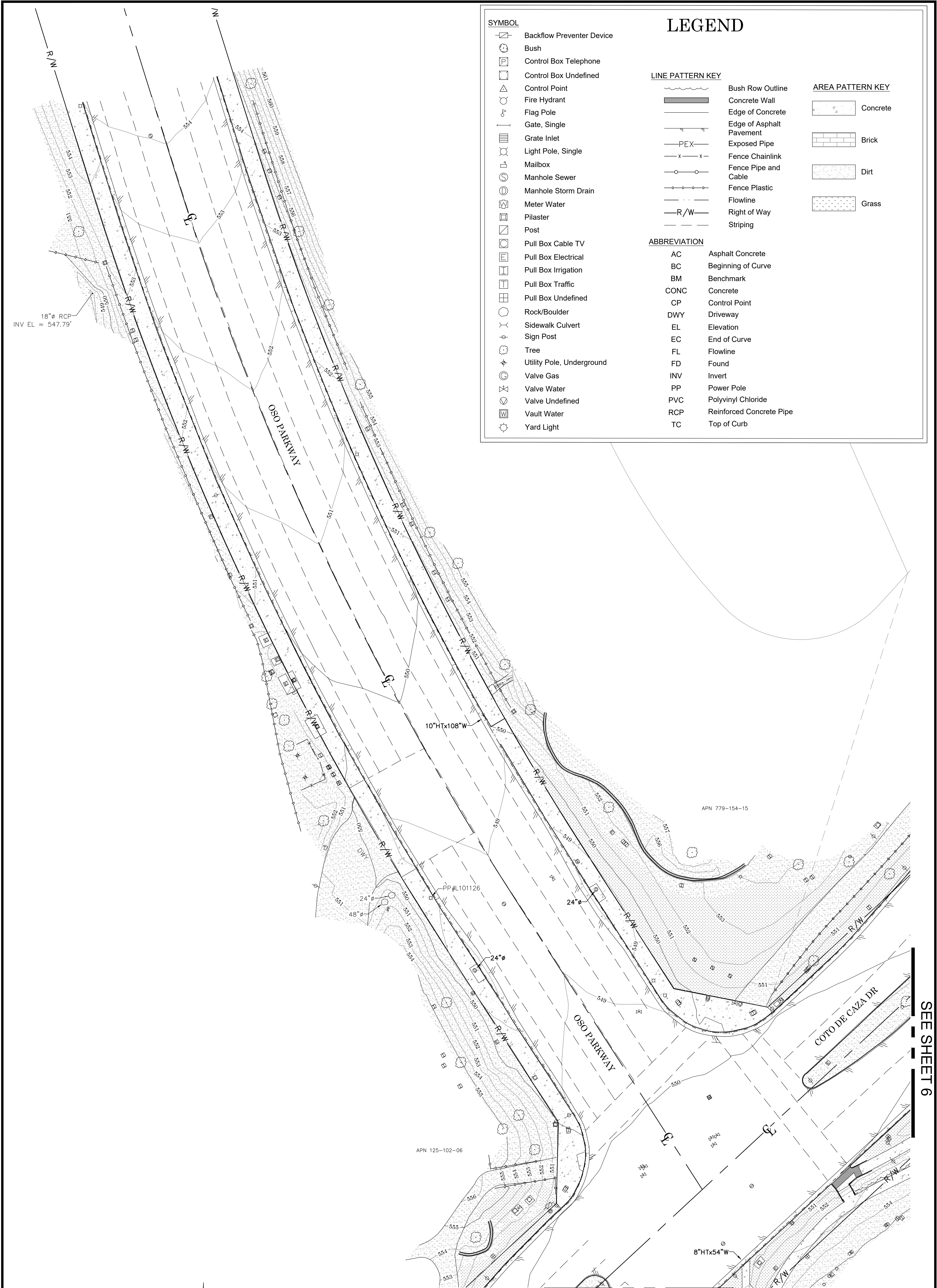
S.F.N. – SEARCHED, FOUND NOTHING
- R

RECORD MAP
- M

MEASURED

			COUNTY OF ORANGE OC PUBLIC WORKS OC SURVEY/FIELD SERVICES/BOUNDARY ANALYSIS & MAPPING			
			OSO PKWY AT COTO DE CAZA SIGNAL INSTALLATION			
			BOUNDARY MAP			
			PROJECT LIMITS: AT THE INTERSECTION OF OSO PARKWAY AND COTO DE CAZA DR			
		DATE OF SURVEY: 01/09/2023	BY: J. JOHNS		SHEET NO. 2 of 6	
		MAPPING	BY: J. PEDRETTI			
		OFFICE CHECK	BY: J. MORENO, PLS			
		FIELD CHECK	BY: J. JOHNS			
MARK	DATE	ITEM	SCALE: N/A	W.O. #E023001P	FILE #2223PW-CM0011	
REVISIONS			FILE: OSO PARKWAY_COTO DE CAZA_BOUNDARY_2023.DWG			





SYMBOL

- Backflow Preventer Device
- Bush
- Control Box Telephone
- Control Box Undefined
- Control Point
- Fire Hydrant
- Flag Pole
- Gate, Single
- Grate Inlet
- Light Pole, Single
- Mailbox
- Manhole Sewer
- Manhole Storm Drain
- Meter Water
- Pilaster
- Post
- Pull Box Cable TV
- Pull Box Electrical
- Pull Box Irrigation
- Pull Box Traffic
- Pull Box Undefined
- Rock/Boulder
- Sidewalk Culvert
- Sign Post
- Tree
- Utility Pole, Underground
- Valve Gas
- Valve Water
- Valve Undefined
- Vault Water
- Yard Light

LEGEND

LINE PATTERN KEY

- Bush Row Outline
- Concrete Wall
- Edge of Concrete
- Edge of Asphalt Pavement
- Exposed Pipe
- Fence Chainlink
- Fence Pipe and Cable
- Fence Plastic
- Flowline
- Right of Way
- Striping

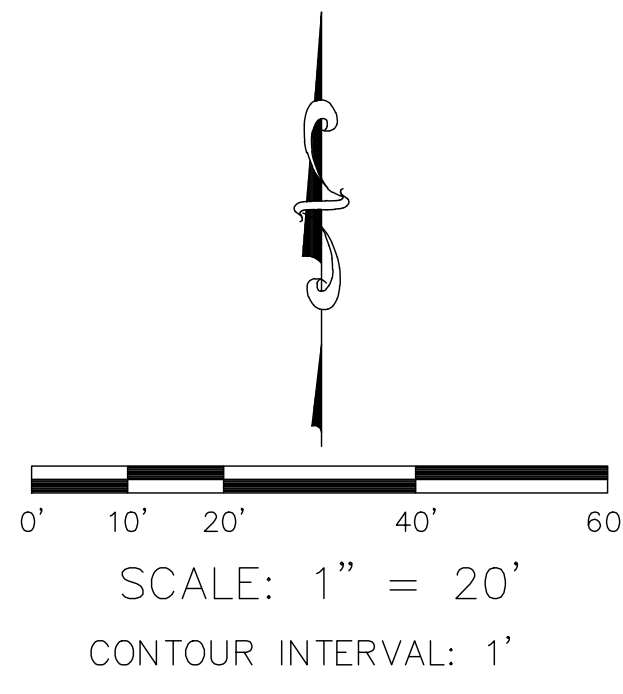
AREA PATTERN KEY

- Concrete
- Brick
- Dirt
- Grass

ABBREVIATION

AC	Asphalt Concrete
BC	Beginning of Curve
BM	Benchmark
CONC	Concrete
CP	Control Point
DWY	Driveway
EL	Elevation
EC	End of Curve
FL	Flowline
FD	Found
INV	Invert
PP	Power Pole
PVC	Polyvinyl Chloride
RCP	Reinforced Concrete Pipe
TC	Top of Curb

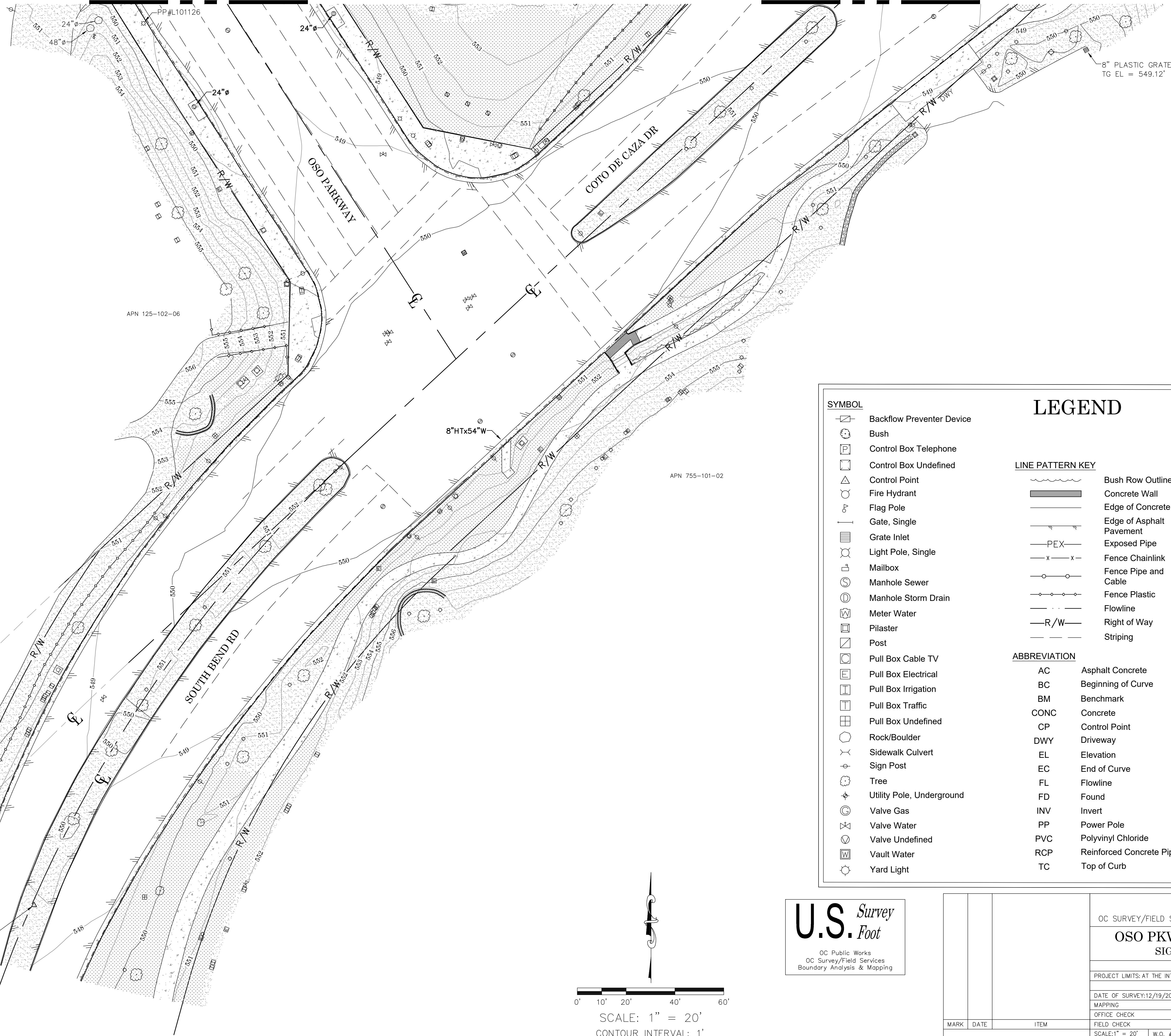
U.S. Survey Foot
OC Public Works
OC Survey/Field Services
Boundary Analysis & Mapping



SEE SHEET 5					
			COUNTY OF ORANGE OC PUBLIC WORKS OC SURVEY/FIELD SERVICES/BOUNDARY ANALYSIS & MAPPING		
			OSO PKWY AT COTO DE CAZA SIGNAL INSTALLATION		
			TOPOGRAPHIC MAP		
			PROJECT LIMITS: AT THE INTERSECTION OF OSO PARKWAY AND COTO DE CAZA DR		
			DATE OF SURVEY:12/19/2022		SHEET NO. 4 of 6
			MAPPING		
			OFFICE CHECK		
			FIELD CHECK		
			SCALE:1" = 20'		
MARK	DATE	ITEM	W.O. #E023001P		
		REVISIONS	FILE #2223PW-CM0011		
			FILE:COTO DE CAZA_TOPO_2022.DWG		

SEE SHEET 4

SEE SHEET 5



SYMBOL

- Backflow Preventer Device
- Bush
- Control Box Telephone
- Control Box Undefined
- Control Point
- Fire Hydrant
- Flag Pole
- Gate, Single
- Grate Inlet
- Light Pole, Single
- Mailbox
- Manhole Sewer
- Manhole Storm Drain
- Meter Water
- Pilaster
- Post
- Pull Box Cable TV
- Pull Box Electrical
- Pull Box Irrigation
- Pull Box Traffic
- Pull Box Undefined
- Rock/Boulder
- Sidewalk Culvert
- Sign Post
- Tree
- Utility Pole, Underground
- Valve Gas
- Valve Water
- Valve Undefined
- Vault Water
- Yard Light

LEGEND

LINE PATTERN KEY

- Bush Row Outline
- Concrete Wall
- Edge of Concrete
- Edge of Asphalt Pavement
- Exposed Pipe
- Fence Chainlink
- Fence Pipe and Cable
- Fence Plastic
- Flowline
- Right of Way
- Striping

AREA PATTERN KEY

- Concrete
- Brick
- Dirt
- Grass

ABBREVIATION

- | | |
|------|--------------------------|
| AC | Asphalt Concrete |
| BC | Beginning of Curve |
| BM | Benchmark |
| CONC | Concrete |
| CP | Control Point |
| DWY | Driveway |
| EL | Elevation |
| EC | End of Curve |
| FL | Flowline |
| FD | Found |
| INV | Invert |
| PP | Power Pole |
| PVC | Polyvinyl Chloride |
| RCP | Reinforced Concrete Pipe |
| TC | Top of Curb |

U.S. Survey
Foot

OC Public Works
OC Survey/Field Services
Boundary Analysis & Mapping

COUNTY OF ORANGE
OC PUBLIC WORKS
OC SURVEY/FIELD SERVICES/BOUNDARY ANALYSIS & MAPPING

OSO PKWY AT COTO DE CAZA
SIGNAL INSTALLATION

TOPOGRAPHIC MAP

PROJECT LIMITS: AT THE INTERSECTION OF OSO PARKWAY AND COTO DE CAZA DR

DATE OF SURVEY: 12/19/2022

MAPPING

OFFICE CHECK

FIELD CHECK

SCALE: 1" = 20'

FILE: COTO DE CAZA_TOPO_2022.DWG

BY: J. JOHNS & PARTY

BY: J. PEDRETTI

BY: J. MORENO, PLS

BY: J. MORENO, PLS

W.O. #E023001P

FILE #2223PW-CM0011

SHEET NO.

5

of

6

REVISIONS

MARK

DATE

ITEM

SYMBOL

- Backflow Preventer Device
- Bush
- Control Box Telephone
- Control Box Undefined
- Control Point
- Fire Hydrant
- Flag Pole
- Gate, Single
- Grate Inlet
- Light Pole, Single
- Mailbox
- Manhole Sewer
- Manhole Storm Drain
- Meter Water
- Pilaster
- Post
- Pull Box Cable TV
- Pull Box Electrical
- Pull Box Irrigation
- Pull Box Traffic
- Pull Box Undefined
- Rock/Boulder
- Sidewalk Culvert
- Sign Post
- Tree
- Utility Pole, Underground
- Valve Gas
- Valve Water
- Valve Undefined
- Vault Water
- Yard Light

LEGEND

LINE PATTERN KEY

- Bush Row Outline
- Concrete Wall
- Edge of Concrete
- Edge of Asphalt Pavement
- Exposed Pipe
- Fence Chainlink
- Fence Pipe and Cable
- Fence Plastic
- Flowline
- Right of Way
- Striping

AREA PATTERN KEY

- Concrete
- Brick
- Dirt
- Grass

ABBREVIATION

- AC Asphalt Concrete
- BC Beginning of Curve
- BM Benchmark
- CONC Concrete
- CP Control Point
- DWY Driveway
- EL Elevation
- EC End of Curve
- FL Flowline
- FD Found
- INV Invert
- PP Power Pole
- PVC Polyvinyl Chloride
- RCP Reinforced Concrete Pipe
- TC Top of Curb

