



# OC PUBLIC WORKS DEPARTMENT

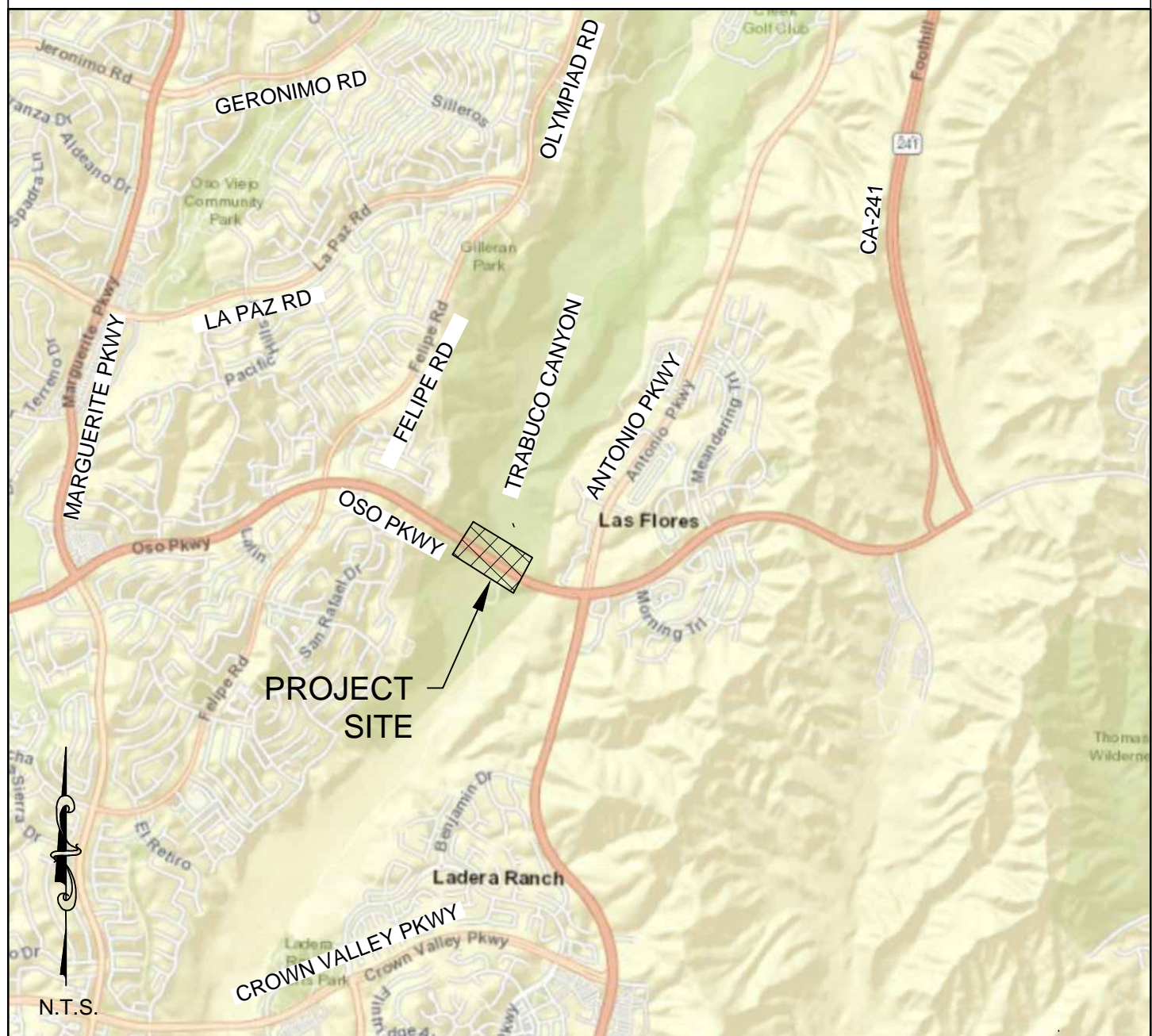
SHANE SILSBY, DIRECTOR

KEVIN HILLS, COUNTY SURVEYOR

## OSO PARKWAY (55C0606) OVER TRABUCO CREEK



### LOCATION MAP



#### SENIOR LAND SURVEYOR'S CERTIFICATE:

THIS MAP CORRECTLY REPRESENTS A SURVEY MADE BY ME OR UNDER MY DIRECTION IN CONFORMANCE WITH REQUIREMENTS OF THE PROFESSIONAL LAND SURVEYOR'S ACT, THIS 3RD DAY OF APRIL, 2019.

ELLIOTT MEDINA SENIOR LAND SURVEYOR



#### DEPUTY COUNTY SURVEYOR'S STATEMENT:

THIS MAP HAS BEEN EXAMINED IN ACCORDANCE WITH THE PROFESSIONAL LAND SURVEYOR'S ACT, THIS 3RD DAY OF APRIL, 2019.

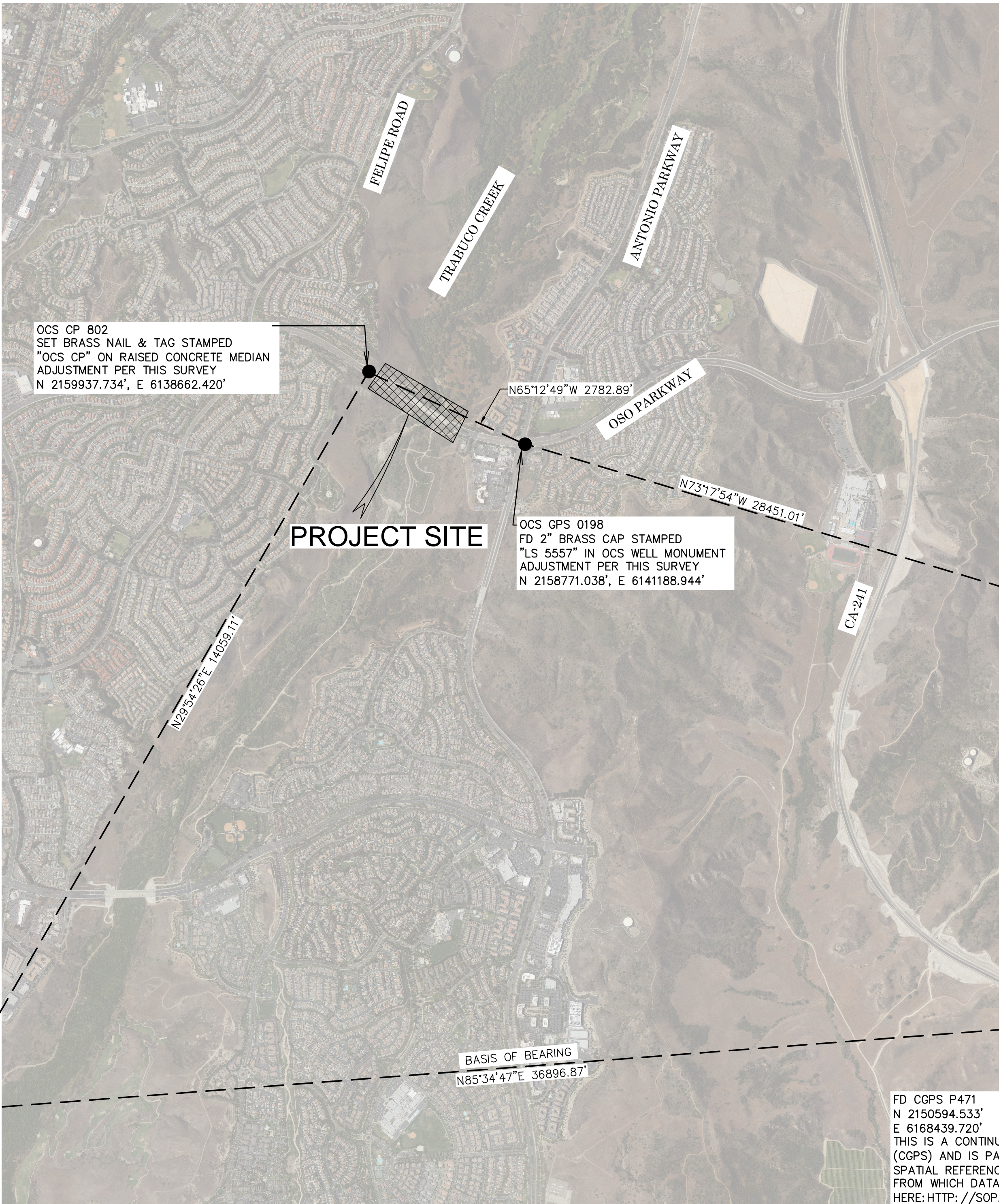
WADE WEAVER DEPUTY COUNTY SURVEYOR



**U.S. Survey Foot**

OC Public Works/Engineering Services  
OC Survey/Field Services  
Boundary Analysis & Mapping

FD CGPS SBCC  
N 2147750.808'  
E 6131852.603'  
THIS IS A CONTINUOUS GPS STATION  
(CGPS) AND IS PART OF THE CALIFORNIA  
SPATIAL REFERENCE NETWORK (CSRN).  
FROM WHICH DATA CAN BE DOWNLOADED  
HERE: [HTTP://SOPACCSRC.UCSD.EDU/](http://SOPACCSRC.UCSD.EDU/)



### TOPOGRAPHIC MAPPING PROJECT

#### BASIS OF BEARINGS

THE BASIS OF BEARINGS FOR THIS SURVEY IS BASED ON THE CALIFORNIA COORDINATE SYSTEM (CCS83), ZONE VI, NAD 83, OCS (2007.00) EPOCH ADJUSTMENT, AS DETERMINED LOCALLY BY A LINE BETWEEN CONTINUOUS GLOBAL POSITIONING STATIONS (CGPS) SBCC AND P471 BEING NORTH 85°34'47" EAST AS DERIVED FROM THE COORDINATES ESTABLISHED BY THE CALIFORNIA SPATIAL REFERENCE CENTER (CSRC) ALONG WITH DATASHEETS ON FILE IN THE OFFICE OF THE ORANGE COUNTY SURVEYOR.

#### HORIZONTAL DATUM

COORDINATES SHOWN HEREON ARE BASED ON THE CALIFORNIA COORDINATE SYSTEM (CCS83), ZONE VI, 1983 NORTH AMERICAN DATUM (2007.00 EPOCH O.C.S. G.P.S. ADJUSTMENT).

ALL DISTANCES SHOWN ARE GRID, UNLESS OTHERWISE NOTED.  
MULTIPLY A GRID DISTANCE BY 1.000058553 TO OBTAIN GROUND DISTANCE.  
ALL DISTANCES ARE BASED ON THE U.S. SURVEY FOOT.

#### VERTICAL DATUM

O.C.S. BM. 3EE-21-91 ELEV. = 602.100' YEAR LEVELED: 1999  
NAVD 1988 (O.C.S. 1995 ADJUSTMENT)

DESCRIPTION: DESCRIBED BY OCS 2003 - FOUND 3 3/4" OCS ALUMINUM BENCHMARK DISK STAMPED "3EE-22-91", SET IN THE SOUTHEASTERLY CORNER OF A 4 BY 6 FT. CONCRETE CATCH BASIN. MONUMENT IS LOCATED IN THE NORTHWESTERLY CORNER OF THE INTERSECTION OF OSO PARKWAY AND FELIPE ROAD, 88 FT. NORTHERLY OF THE CENTERLINE OF OSO PARKWAY AND 36 FT. WESTERLY OF THE CENTERLINE OF FELIPE. MONUMENT IS SET LEVEL WITH THE SIDEWALK.

#### NOTES

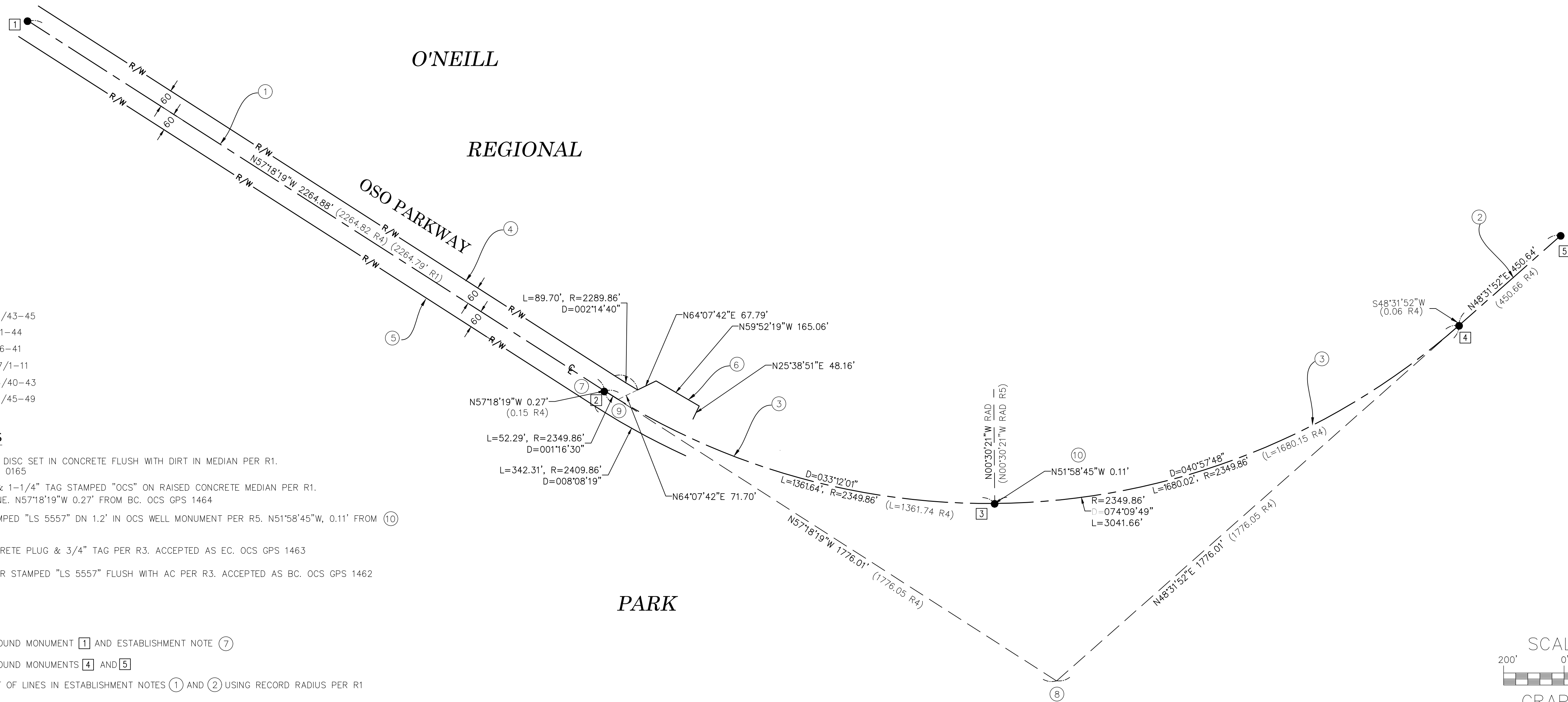
THE SURVEY INFORMATION SHOWN HEREON IS TO BE USED FOR TOPOGRAPHIC RELATIONSHIPS ONLY AND IS NOT INTENDED FOR LAND ACQUISITION OR BOUNDARY PURPOSES.

#### SHEET INDEX

SHEET NO.	DESCRIPTION
SHEET #1	TITLE SHEET
SHEET #2	BOUNDARY MAP
SHEET #3	TOPOGRAPHIC MAP

COUNTY OF ORANGE OC PUBLIC WORKS/ENGINEERING SERVICES OC SURVEY/FIELD SERVICES/BOUNDARY ANALYSIS & MAPPING			
OSO PARKWAY (55C0606) OVER TRABUCO CREEK			
TITLE SHEET			
LOCATION: WEST APPROACH TO EAST APPROACH OF OSO PARKWAY BRIDGE			
DATE OF SURVEY: JANUARY 2019	BY: R. MACIAS & PARTY	SHEET NO. 1 of 3	
TOPOGRAPHIC MAPPING	BY: M. AUSTRIA, PLS		
OFFICE CHECK	BY: E. MEDINA, PLS		
FIELD CHECK	BY: R. MACIAS, PLS		
SCALE: N.T.S.	W.O. #ER20568		
MARK	DATE	ITEM	FILE NO:
REVISIONS			
FILE: OSOPWKY_TOPOGRAPHICMAP_2019.DWG			





REFERENCES

- (R1) = R.S. 94-1082, R.S.B. 149/43-45  
(R2) = TRACT 15239, MM 735/41-44  
(R3) = TRACT 15145, MM 728/36-41  
(R4) = R.S. 99-1048, R.S.B. 177/1-11  
(R5) = TRACT 15645, R.S.B. 786/40-43  
(R5) = R.S. 89-1113, R.S.B. 123/45-49

MONUMENT DESCRIPTIONS

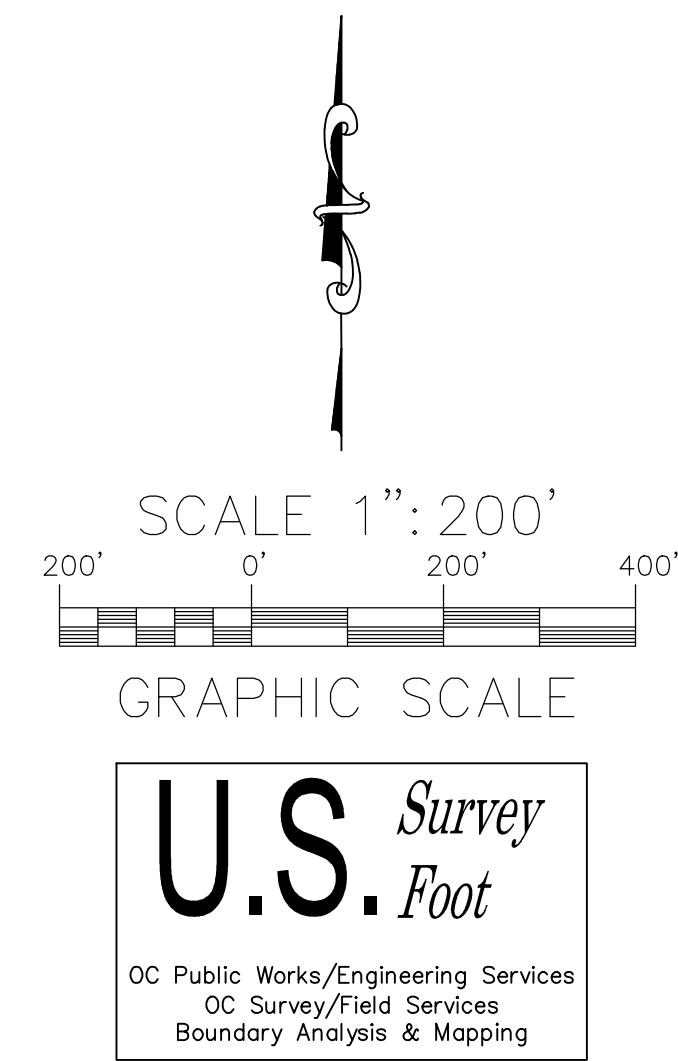
- 1 FOUND 2-1/2" OCS BRASS DISC SET IN CONCRETE FLUSH WITH DIRT IN MEDIAN PER R1. ACCEPTED AS EC. OCS GPS 0165  
2 FOUND LEAD-BRASS NAIL & 1-1/4" TAG STAMPED "OCS" ON RAISED CONCRETE MEDIAN PER R1. ACCEPTED AS POINT ON LINE. N57°18'19"W 0.27' FROM BC. OCS GPS 1464  
3 FOUND 2" BRASS CAP STAMPED "LS 5557" DN 1.2' IN OCS WELL MONUMENT PER R5. N51°58'45"W, 0.11' FROM 10 OCS GPS 0198  
4 FOUND 2" IRON PIPE-CONCRETE PLUG & 3/4" TAG PER R3. ACCEPTED AS EC. OCS GPS 1463  
5 FD SPIKE & 1-1/2" WASHER STAMPED "LS 5557" FLUSH WITH AC PER R3. ACCEPTED AS BC. OCS GPS 1462

ESTABLISHMENT NOTES

- 1 ESTABLISHED CL ALONG FOUND MONUMENT 1 AND ESTABLISHMENT NOTE 7  
2 ESTABLISHED CL ALONG FOUND MONUMENTS 4 AND 5  
3 ESTABLISHED CL BY FILLET OF LINES IN ESTABLISHMENT NOTES 1 AND 2 USING RECORD RADIUS PER R1  
4 ESTABLISHED THE NORTHERLY R/W PARALLEL WITH, PERPENDICULAR TO, AND 60' NORTHERLY OF THE ESTABLISHED CL OF OSO PARKWAY PER R4  
5 ESTABLISHED THE SOUTHERLY R/W PARALLEL WITH, PERPENDICULAR TO, AND 60' SOUTHERLY OF THE ESTABLISHED CL OF OSO PARKWAY PER R4  
6 ESTABLISHED JOG BY RECORD BEARINGS AND DISTANCES PER R2 STARTING FROM ESTABLISHED POINT 9  
7 ESTABLISHED CL BC S57°18'19"E, 0.27' FROM 2  
8 ESTABLISHED PI BY INTERSECTION FROM ESTABLISHMENT NOTES 1 AND 2  
9 ESTABLISHED POINT ON CURVE AND START OF JOG IN ESTABLISHMENT NOTE 6 BY RECORD CURVE DATA ALONG CL PER R2.  
10 ESTABLISHED POINT ON CURVE BY PRORATING RECORD DISTANCES PER R4 AND CALCULATED DISTANCES IN ESTABLISHMENT NOTE 3

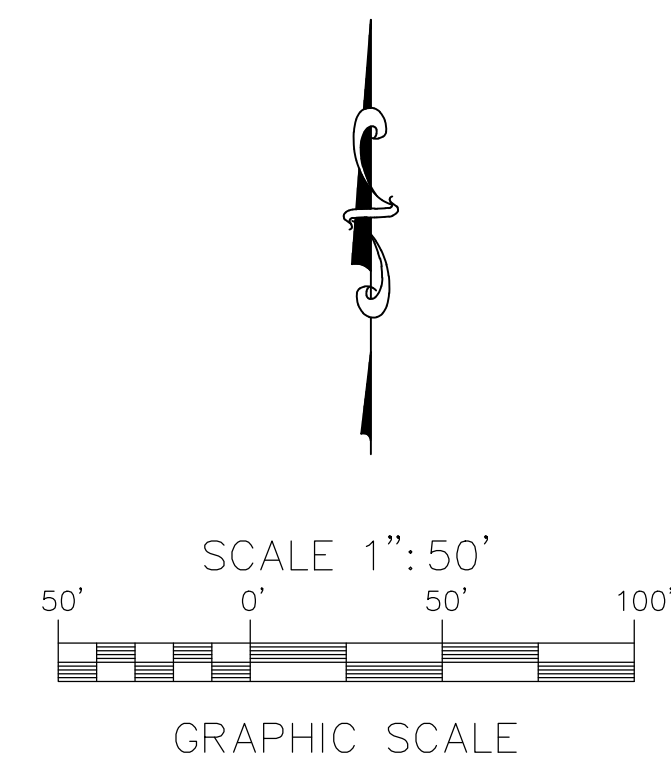
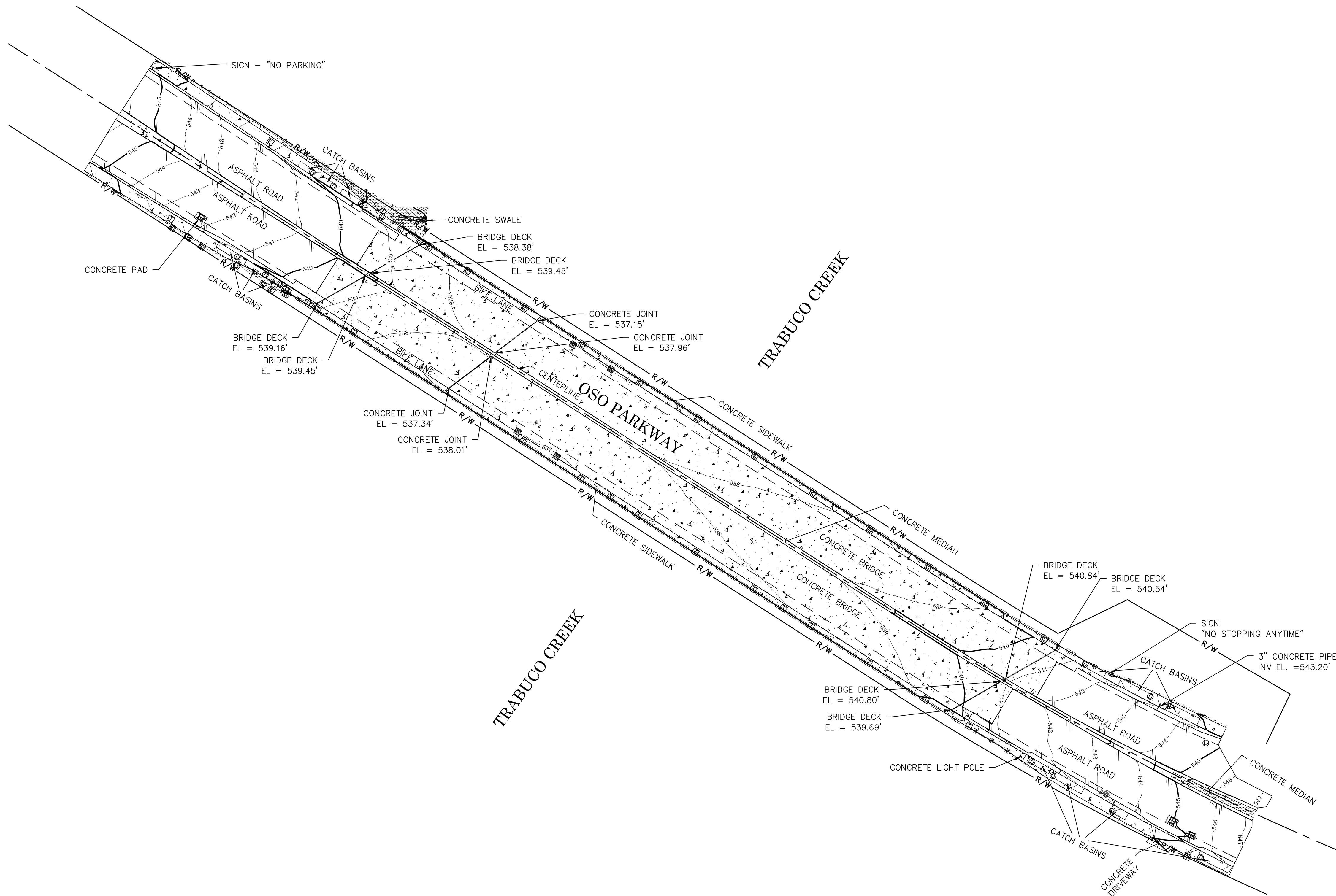
NOTE

ANY REFERENCE OF AN OCS GPS POINT MAY BE FOUND ON THE COUNTY GEORESEARCH WEBSITE.



			COUNTY OF ORANGE OC PUBLIC WORKS/ENGINEERING SERVICES OC SURVEY/FIELD SERVICES/BOUNDARY ANALYSIS & MAPPING			
			OSO PARKWAY (55C0606) OVER TRABUCO CREEK			
			BOUNDARY MAP			
			LOCATION: WEST APPROACH TO EAST APPROACH OF OSO PARKWAY BRIDGE			
			DATE OF SURVEY: JANUARY 2019		BY: R. MACIASA & PARTY	
			BOUNDARY MAPPING		BY: M. AUSTRIA, PLS	
			OFFICE CHECK		BY: E. MEDINA, PLS	
			FIELD CHECK		BY: R. MACIAS, PLS	
			REVISIONS		SCALE: 1" = 200'   W.O. #ER20568	
MARK	DATE	ITEM	FILE: OSOPKWY_ROW_2019.DWG			

SHEET NO. 2 of 3



**U.S. Survey**  
**Foot**

OC Public Works/Engineering Services  
OC Survey/Field Services  
Boundary Analysis & Mapping

### LEGEND

#### SYMBOL

- Control Box - Electrical
- Grate Inlet - Steel
- Light Pole
- Manhole - Storm Drain
- Manhole - Water
- Pipe Outlet
- Pull Box - Traffic
- Sign Post - Steel
- Valve - Gas
- Valve - Water
- Vault - Undefined
- Vent Pipe

#### LINE PATTERN KEY

- Centerline
- Edge of Asphalt
- Fence - Post and Wire
- Flowline
- Guard Rail
- R/W
- Right-of-Way
- Striping
- Wall - Concrete

#### AREA PATTERN KEY

- Concrete
- Dirt

			COUNTY OF ORANGE OC PUBLIC WORKS/ENGINEERING SERVICES OC SURVEY/FIELD SERVICES/BOUNDARY ANALYSIS & MAPPING				
			OSO PARKWAY (55C0606) OVER TRABUCO CREEK				
			TOPOGRAPHIC MAP				
			LOCATION: WEST APPROACH TO EAST APPROACH OF OSO PARKWAY BRIDGE				
REV NO.	DATE	ITEM	DATE OF SURVEY: JANUARY 2019		BY: R. MACIAS & PARTY		SHEET NO.  3 of 3
			TOPOGRAPHIC MAPPING		BY: M. AUSTRIA, PLS		
OFFICE CHECK		BY: E. MEDINA, PLS					
FIELD CHECK		BY: R. MACIAS, PLS					
SCALE: 1" = 50'		W.O. #R20568					
		FILE: OSOPWKY_TOPOGRAPHICMAP_2019.DWG					
REVISIONS							