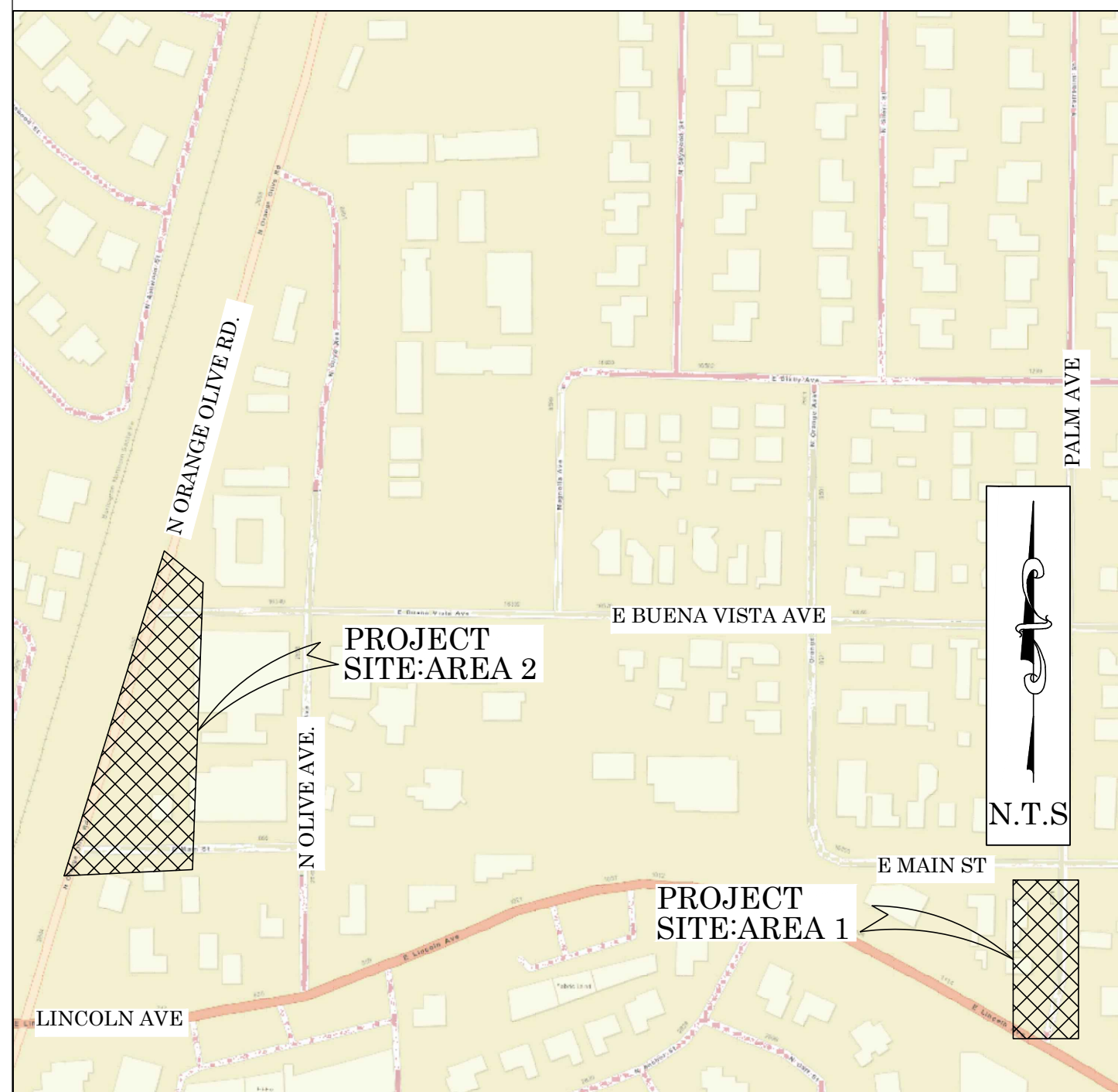




OC PUBLIC WORKS DEPARTMENT  
KHALID BAZMI, PE, INTERIM DIRECTOR  
KEVIN HILLS, COUNTY SURVEYOR  
OLIVE HEIGHTS TOPOGRAPHIC MAP  
AREA 1 & AREA 2



LOCATION MAP



SENIOR LAND SURVEYOR'S CERTIFICATE:

THIS MAP CORRECTLY REPRESENTS A SURVEY MADE BY ME OR UNDER MY DIRECTION IN CONFORMANCE WITH REQUIREMENTS OF THE PROFESSIONAL LAND SURVEYOR'S ACT; THIS 10TH DAY OF APRIL, 2020.

ELLIOTT MEDINA, PLS. SENIOR LAND SURVEYOR



DEPUTY COUNTY SURVEYOR'S STATEMENT:

THIS MAP HAS BEEN EXAMINED IN ACCORDANCE WITH THE PROFESSIONAL LAND SURVEYOR'S ACT; THIS 10TH DAY OF APRIL, 2020.

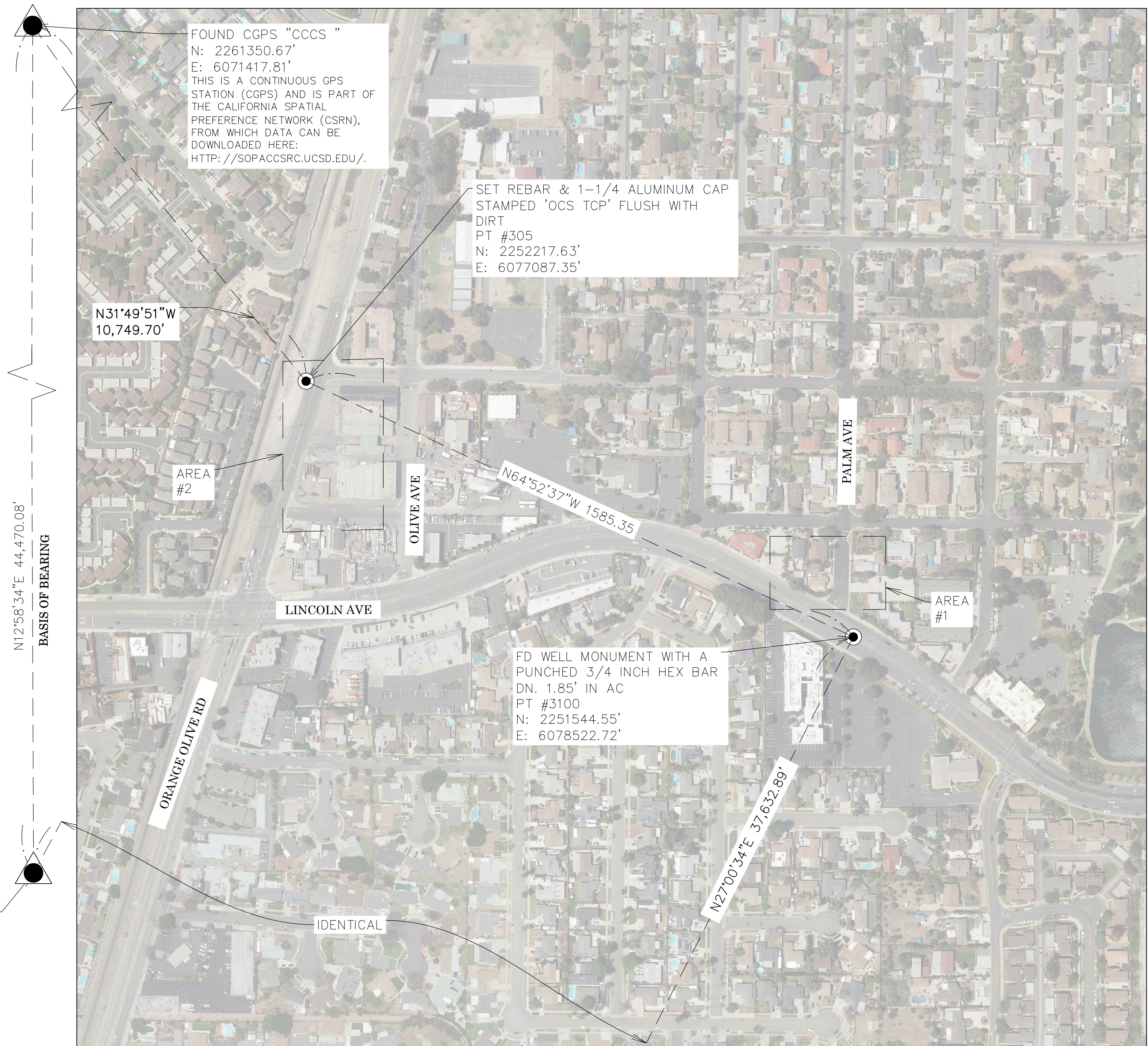
WADE WEAVER, PLS. DEPUTY COUNTY SURVEYOR



FOUND CGPS "SACY"  
N: 2218016.19'  
E: 6061432.27'  
THIS IS A CONTINUOUS GPS STATION (CGPS) AND IS PART OF THE CALIFORNIA SPATIAL PREFERENCE NETWORK (CSRN), FROM WHICH DATA CAN BE DOWNLOADED HERE:  
[HTTP://SOPACCSRC.UCSD.EDU/](http://SOPACCSRC.UCSD.EDU/).



N.T.S.



TOPOGRAPHIC MAPPING PROJECT

BASIS OF BEARINGS

THE BASIS OF BEARINGS FOR THIS SURVEY IS BASED ON THE CALIFORNIA COORDINATE SYSTEM (CCS83), ZONE VI, NAD 83, OCS (2017.50) EPOCH ADJUSTMENT, AS DETERMINED LOCALLY BY A LINE BETWEEN CONTINUOUS GLOBAL POSITIONING STATIONS CGPS (CCCS) AND (SACY) BEING NORTH 12°58'34" EAST AS DERIVED FROM THE COORDINATES PUBLISHED BY THE CALIFORNIA SPATIAL REFERENCE CENTER (CSRC) ALONG WITH DATA SHEETS ON FILE IN THE OFFICE OF THE ORANGE COUNTY SURVEYOR.

HORIZONTAL DATUM

COORDINATES SHOWN ARE BASED ON THE CALIFORNIA COORDINATE SYSTEM (CCS83), ZONE VI, NAD 83, OCS 2017.50 EPOCH ADJUSTMENT.

ALL DISTANCES SHOWN ARE GRID, UNLESS OTHERWISE NOTED. TO OBTAIN GROUND DISTANCES DIVIDE GRID BY 1.000013665  
ALL DISTANCES ARE BASED ON THE U.S. SURVEY FOOT.

THE COMBINATION FACTOR SHOWN HEREON WAS DERIVED BY AVERAGE BETWEEN POINT NUMBERS 305 & 3100.

VERTICAL DATUM

O.C.S. BM. 1E-119-06 ELEV. = 209.018' YEAR LEVELED: 2006

NAVD 1988 (O.C.S. 1995 ADJUSTMENT)

DESCRIPTION: FOUND 4" OCS ALUMINUM BENCHMARK DISK STAMPED "1E-119-06", SET IN THE SOUTHWESTERLY CORNER OF A 4 FT. BY 5 FT. CONCRETE CATCH BASIN. MONUMENT IS LOCATED IN THE SOUTH EASTERLY CORNER OF THE INTERSECTION OF GREENLEAF AVENUE AND ORANGE-OLIVE ROAD, 61 FT. SOUTHERLY OF THE CENTERLINE OF GREENLEAF AND 30 FT. EASTERLY OF THE CENTERLINE OF ORANGE-OLIVE ROAD. MONUMENT IS SET LEVEL WIT THE SIDEWALK.

NOTES

THE SURVEY INFORMATION SHOWN HEREON IS TO BE USED FOR TOPOGRAPHIC RELATIONSHIPS ONLY AND IS NOT INTENDED FOR LAND ACQUISITION OR BOUNDARY PURPOSES.  
PARCELS SHOWN WITHOUT BEARING AND DISTANCES ARE FOR GRAPHICAL PURPOSES, AND REQUIRE RECEIPT OF TITLE REPORT.

SHEET INDEX

SHEET NO.	DESCRIPTION
SHEET 1	TITLE SHEET
SHEET 2-3	BOUNDARY MAP
SHEETS 4-5	TOPOGRAPHIC MAP

PURPOSE OF SURVEY

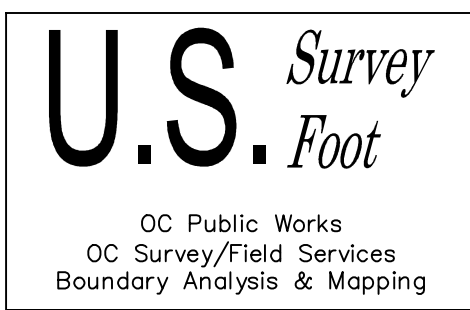
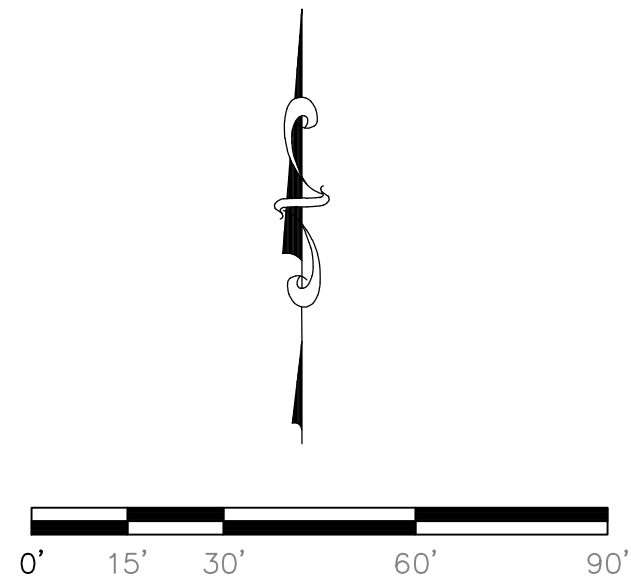
THE PURPOSE OF THIS PROJECT IS TO CLOSE A GAP IN THE SIDEWALK AND MAKE IT AMERICANS WITH DISABILITIES ACT (ADA) COMPLIANT.

HYPERLINK

REFERENCE DOCUMENTS IN THE REFERENCE LEGEND ARE LIVE HYPERLINKS TO SAID DOCUMENT. MONUMENT SYMBOLS CONTAIN LIVE HYPERLINKS TO IMAGES, IF THEY EXIST, OF RESPECTIVE MONUMENT.

			COUNTY OF ORANGE OC PUBLIC WORKS OC SURVEY/FIELD SERVICES/BOUNDARY ANALYSIS & MAPPING	
			OLIVE HEIGHTS TITLE SHEET	
			PROJECT LIMITS: AT THE NW CORNER OF LINCOLN AVE & PALM AVE TO 200' WEST FROM THE AFOREMENTIONED INTERSECTION AND ON ORANGE OLIVE RD. FROM E MAIN STREET TO E BUENA VISTA AVE.	
			DATE OF SURVEY: FEBRUARY 06, 2020	BY: R. MACIAS, PLS. & PARTY
			TOPOGRAPHIC MAPPING	BY: K. AHMED
			OFFICE CHECK	BY: E. MEDINA, PLS.
			FIELD CHECK	BY: R. MACIAS, PLS. & PARTY
			SCALE: N.T.S.	W.O. #E019800S
			FILE: OLIVE HEIGHTS_TOPO_2020_AREA1.DWG	FILE NO.1920PW-IN0020
MARK	DATE	ITEM		
REVISIONS				
			SHEET NO. 1 of 5	

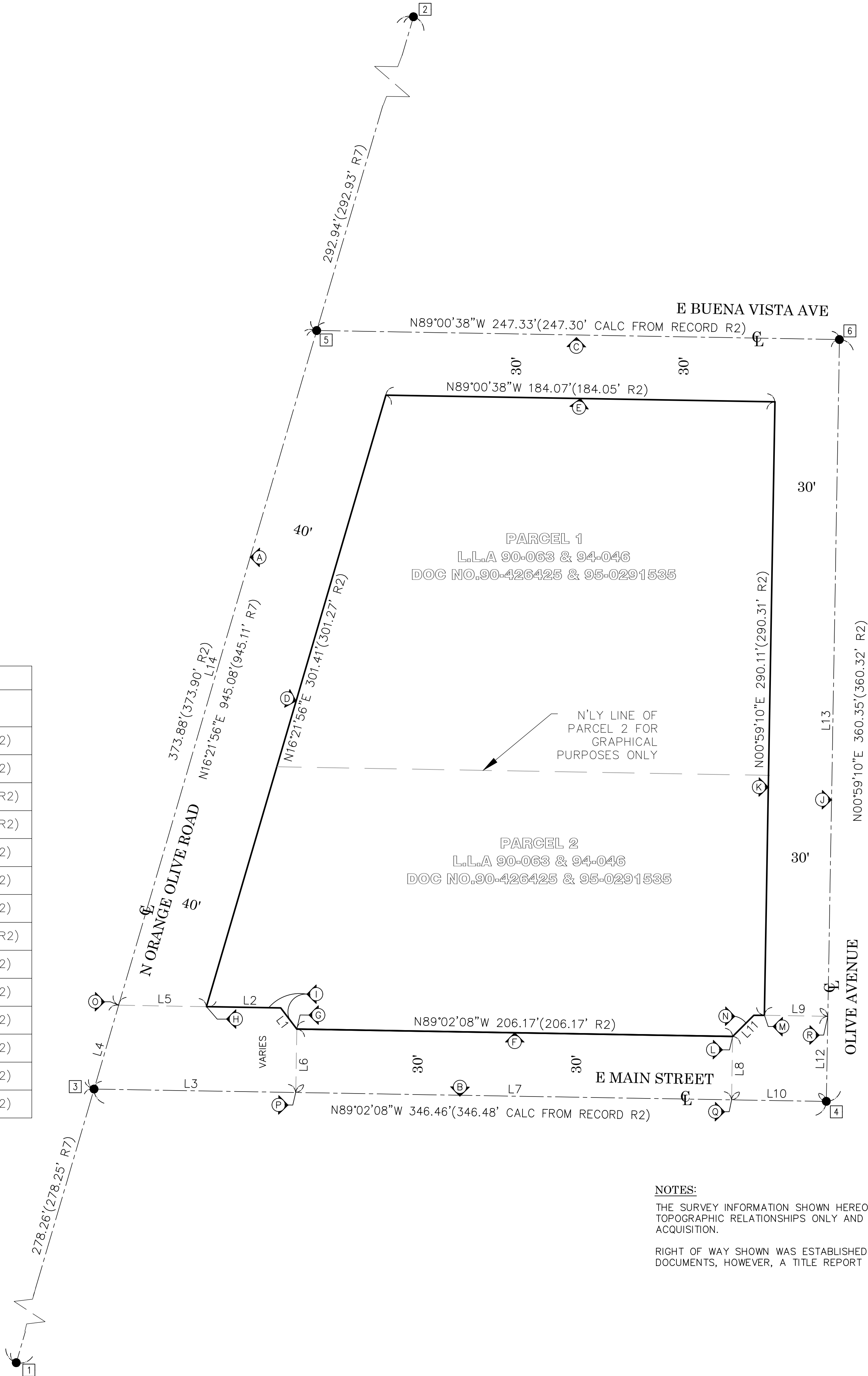




LINE TABLE			
LINE #	BEARING	MEASURED DISTANCE	RECORD DISTANCE
L1	N37°13'58"W	12.55'	(M & R PER R2)
L2	N89°02'08"W	35.19'	(M & R PER R2)
L3	N89°02'08"W	95.42'	(M & CR PER R2)
L4	N16°21'56"E	41.35'	(M & CR PER R2)
L5	N89°02'08"W	41.49'	(M & R PER R2)
L6	S00°57'52"W	30.00'	(M & R PER R2)
L7	N89°02'08"W	206.20'	(M & R PER R2)
L8	N00°57'52"E	30.00'	(M & CR PER R2)
L9	S89°00'50"E	30.00'	(M & R PER R2)
L10	N89°02'08"W	44.84'	(M & R PER R2)
L11	N45°04'31"E	14.15'	(M & R PER R2)
L12	N00°59'10"E	40.27'	(M & R PER R2)
L13	N00°59'10"E	320.08'	(M & R PER R2)
L14	N16°21'56"E	332.53'	(M & R PER R2)

LEGEND

- FOUND MONUMENT AS NOTED
- ⊗ S.F.N- SEARCH FOUND NOTHING



NOTES:

THE SURVEY INFORMATION SHOWN HEREON IS TO BE USED FOR TOPOGRAPHIC RELATIONSHIPS ONLY AND IS NOT INTENDED FOR LAND ACQUISITION.

RIGHT OF WAY SHOWN WAS ESTABLISHED FROM RECORD MAPS AND DOCUMENTS, HOWEVER, A TITLE REPORT WAS NOT OBTAINED.

REFERENCES:

- (R1) = RECORD OF SURVEY RSB 111/47-48
- (R2) = RECORD OF SURVEY RSB 130/131
- (R3) = RECORD OF SURVEY RSB 222/46
- (R4) = LOT LINE ADJUSTMENT LL 94-046 O.R95-0291535
- (R5) = CORNER RECORD CR 1998-0165
- (R6) = CORNER RECORD CR 2003-0856
- (R7) = RECORD OF SURVEY RSB 133/1-6
- (R8) = TRACT MAP 7990 M.M. 320 /10-15

MONUMENT NOTES:

- 1 FOUND WELL MONUMENT WITH A PUNCHED 3/4 INCH HEX BAR DN. 1.70' IN AC ACCEPTED AS THE CENTERLINE INTERSECTION OF N ORANGE OLIVE RD. & LINCOLN AVE. PER (R8).
- 2 FOUND SPIKE & 1-1/2 INCH TAG STAMPED 'OCS' FLUSH WITH AC ACCEPTED AS A POINT ON CENTERLINE ON N ORANGE OLIVE RD PER (R7).
- 3 FOUND SPIKE & 1-1/2 INCH TAG STAMPED 'OCS' FLUSH WITH AC ACCEPTED AS THE CENTERLINE INTERSECTION OF E MAIN ST. & OLIVE AVENUE PER (R7).
- 4 FOUND SPIKE & 1-1/2 INCH TAG STAMPED 'OCS' FLUSH WITH AC ACCEPTED AS THE CENTERLINE INTERSECTION OF E MAIN ST. & OLIVE AVE PER (R5).
- 5 FOUND SPIKE & 1-1/2 INCH TAG STAMPED 'OCS' FLUSH WITH AC ACCEPTED AS THE CENTERLINE INTERSECTION OF N ORANGE OLIVE RD. & E BUENA VISTA PER (R7).
- 6 FOUND SPIKE & 1-1/2 INCH TAG STAMPED 'OCS' FLUSH WITH AC ACCEPTED AS THE CENTERLINE INTERSECTION OF OLIVE AVE. & E BUENA VISTA PER (R1).

ESTABLISHMENT NOTES:

- A ESTABLISHED THE CENTERLINE OF NORTH ORANGE OLIVE ROAD BY HOLDING MONUMENTS 1 AND 2 PER (R1).
- B ESTABLISHED THE CENTERLINE OF EAST MAIN STREET ROAD BY HOLDING MONUMENTS 3 AND 4 PER (R2 & R3).
- C ESTABLISHED THE CENTERLINE OF EAST BUENA VISTA AVE BY HOLDING MONUMENTS 5 AND 6 PER (R1).
- D ESTABLISHED THE E'LY RIGHT OF WAY OF NORTH ORANGE OLIVE AVE PARALLEL AND 40' PERPENDICULAR FROM ESTABLISHMENT NOTE A PER (R2).
- E ESTABLISHED THE S'LY RIGHT OF WAY OF EAST BUENA VISTA AVE PARALLEL AND 30' PERPENDICULAR FROM ESTABLISHMENT NOTE C PER (R2).
- F ESTABLISHED PART OF THE N'LY RIGHT OF WAY OF EAST MAIN STREET BY STARTING AT THE MOST E'LY POINT OF THE LINE PARALLEL AND 30' PERPENDICULAR FROM ESTABLISHMENT NOTE B PER (R2).
- G ESTABLISHED PART OF THE N'LY RIGHT OF WAY OF EAST MAIN STREET PARALLEL AND 30' PERPENDICULAR FROM ESTABLISHMENT NOTE C PER (R2).
- H ESTABLISHED PART OF THE E'LY RIGHT OF WAY OF NORTH ORANGE OLIVE ROAD PARALLEL AND 40' PERPENDICULAR FROM ESTABLISHMENT NOTE G PER (R2).
- I ESTABLISHED PART OF THE N'LY RIGHT OF WAY OF EAST MAIN STREET BY HOLDING RECORD DISTANCE & BEARING BETWEEN ESTABLISHMENT NOTES G & H PER (R2).
- J ESTABLISHED THE CENTERLINE OF OLIVE AVENUE BY HOLDING MONUMENTS 4 AND 6 PER (R2).
- K ESTABLISHED THE W'LY RIGHT OF WAY OF OLIVE AVENUE PARALLEL AND 30' PERPENDICULAR FROM ESTABLISHMENT NOTE J PER (R2).
- L ESTABLISHED PART OF THE N'LY RIGHT OF WAY OF EAST MAIN STREET PARALLEL AND 30' PERPENDICULAR FROM ESTABLISHMENT NOTE G PER (R2).
- M ESTABLISHED PART OF THE W'LY RIGHT OF WAY OF OLIVE AVENUE PARALLEL AND 30' PERPENDICULAR FROM ESTABLISHMENT NOTE F PER (R2).
- N ESTABLISHED A PART OF THE N'LY RIGHT OF WAY BETWEEN ESTABLISHMENT NOTE L AND M BY HOLDING RECORD COURSES DATA PER (R2).
- O ESTABLISHED A POINT ON THE CENTERLINE OF NORTH ORANGE OLIVE ROAD N'LY FROM MONUMENT NOTE 3 ALONG ESTABLISHMENT NOTE A AT A CALCULATED RECORD DISTANCE OF 41.35' PER (R2).
- P ESTABLISHED A POINT ON THE CENTERLINE OF EAST MAIN STREET FROM MONUMENT NOTE 3 ALONG ESTABLISHMENT NOTE B AT A CALCULATED RECORD DISTANCE OF 95.42' PER (R2).
- Q ESTABLISHED A POINT ON THE CENTERLINE OF EAST MAIN STREET FROM MONUMENT NOTE 4 ALONG ESTABLISHMENT NOTE B AT A CALCULATED RECORD DISTANCE OF 44.84' PER (R2).
- R ESTABLISHED A POINT ON THE CENTERLINE OF OLIVE AVENUE FROM MONUMENT NOTE 4 ALONG ESTABLISHMENT NOTE J AT A CALCULATED RECORD DISTANCE OF 40.27' PER (R2).

			COUNTY OF ORANGE OC PUBLIC WORKS/ENGINEERING SERVICES OC SURVEY/FIELD SERVICES/BOUNDARY ANALYSIS & MAPPING	
			OLIVE HEIGHTS BOUNDARY MAP AREA 2	
			PROJECT LIMITS: AT THE NW CORNER OF LINCOLN AVE & PALM AVE TO 200' WEST FROM THE AFOREMENTIONED INTERSECTION AND ON ORANGE OLIVE RD.	
			FROM E MAIN STREET TO E BUENA VISTA AVE	
			DATE OF SURVEY: 02/06/2020	BY: R. MACIAS PLS & PARTY
			TOPOGRAPHIC MAPPING	BY: K. AHMED
			OFFICE CHECK	BY: E. MEDINA PLS
			FIELD CHECK	BY: R. MACIAS PLS
			SCALE: 1"=30'	W.O. #E0198005
			FILE #1920PW-IN0020	
			FILE: OLIVE_HEIGHTS_BOUNDARY_2020.DWG	
MARK	DATE	ITEM	REVISIONS	

ORANGE AVENUE

359.73'(359.71' R10)  
S0°57'32"W

S89°00'27"E 379.65'(379.64' R10)

BUENA VISTA STREET



SCALE: 1" = 20'

U.S. Survey Foot

OC Public Works  
OC Survey/Field Services  
Boundary Analysis & Mapping

LEGEND

- FOUND MONUMENT AS NOTED
- ⊗ S.F.N- SEARCH FOUND NOTHING
- M=MEASURED
- CR=CALCULATED FROM RECORD
- R=RECORD

E MAIN STREET

N89°03'41"W 379.66'(379.69' R10)

10

90°2'11"

F

T

R10

S00°57'22"W 359.37'(359.37' R10)

12

S89°04'02"E 379.78'(379.77' R10)

OCEANVIEW STREET

ESTABLISHMENT NOTES:

- Established the centerline of palm avenue by holding monument [10] and establishment note (H) per (R10).
- Established the centerline of E main street avenue by holding monument [11] and establishment note (H) per (R10).
- S.F.N. Established the centerline intersection of palm avenue and E. main street by bearing-bearing intersection holding the record angle from monuments [10] & [11] per (R10).
- Established the centerline of palm avenue by holding monument [9] and establishment note (H) per (R11).
- Established the centerline of E main street avenue by holding monument [12] and establishment note (H) per (R10).
- Established the centerline of lincoln avenue by holding monuments [7] and [8] per (R9).
- S.F.N. Established the centerline intersection of palm avenue and lincoln ave by intersection between establishment notes (K) and (I).
- Established the N'ly right of way of lincoln avenue parallel and 30' perpendicular to establishment note (K) per (R14).
- Established the W'ly right of way of palm avenue parallel and 30' perpendicular from establishment note (I) per (R14).
- Established part of the N'ly right of way of lincoln avenue parallel and 30' perpendicular from establishment note (S) per (R14).
- Established part of the W'ly right of way of palm avenue parallel and 30' perpendicular from establishment note (T) per (R14).

- Established a part of the N'ly right of way between establishment note (U) & (P) by holding record curve data per (R10 & R12).
- Established the S'ly right of way of E main street parallel and 30' perpendicular from establishment note (G) per (R14).
- Established a point on the centerline of lincoln avenue north W'ly from establishment note (L) along establishment note (K) at a calculated record distance of 121.09' per (R10).
- Established a point on the centerline of palm avenue from establishment note (L) along establishment note (L) at a calculated record distance of 107.15' per (R10).
- Established part of the N'ly right of way of lincoln avenue from establishment note (O) at a calculated record distance & bearing of 30.22' S72°47'52"E per (R12).
- Established part of the N'ly right of way of lincoln avenue by holding establishment notes (O) & (U) per (R12).
- Established by holding calculated record chord distance 29.19' & angle 132°36'04" from establishment note (U) closing to the S'ly terminus of establishment note (P) per (R10 & R12).

MONUMENT NOTES:

- Found well monument with a punched 3/4 inch hex bar dn. 1.85' in ac. accepted as a point on the centerline of lincoln avenue per (R9).
- Found well monument with a punched 3/4 inch hex bar dn. 1.85' in ac. accepted as a point on the centerline of lincoln avenue per (R11).
- Found well monument with a punched 3/4 inch hex bar dn. 1.85' in ac. accepted as a point on the centerline of palm avenue per (R9).
- Found spike & 1-1/2 inch tag stamped 'OCS' flush with ac. accepted as the centerline intersection of palm avenue and Buena Vista Street per (R10).
- Found spike & 1-1/2 inch tag stamped 'OCS' flush with ac, in lieu of punched bolt per (R10). accepted as the centerline intersection of East main street and Orange Avenue per (R10).
- Found spike & 1-1/2 inch tag stamped 'OCS' flush with ac, in lieu of punched spike per (R10). accepted as the centerline intersection of East main street and Oceanview Street per (R10).
- Found spike & 1-1/2 inch tag stamped 'OCS' flush with ac, in lieu of punched spike per (R10). accepted as the centerline intersection of Orange Avenue and Buena Vista Street per (R10).

W'LY LINE OF LOT 2 FOR GRAPHICAL PURPOSES ONLY  
LLA 81-4  
14067/932-934

W'LY LINE OF LOT 1 FOR GRAPHICAL PURPOSES ONLY  
PORTION OF LOT 2  
BLOCK J PER (R13)

N'LY LINE OF PORTION OF LOT 1 FOR GRAPHICAL PURPOSES ONLY  
PORTION OF LOT 1  
BLOCK J PER (R12)

PARCEL 2 PER BOOK 10768, PAGE 329

S00°56'55"E 6.63'(6.68' R11)

PALM AVENUE

30'

30'

30'

30'

L15

L14

L13

L12

L11

L10

L9

L8

L7

L6

L5

L4

L3

L2

L1

L0

L-1

L-2

L-3

L-4

L-5

L-6

L-7

L-8

L-9

L-10

L-11

L-12

L-13

L-14

L-15

L-16

L-17

L-18

L-19

L-20

L-21

L-22

L-23

L-24

L-25

L-26

L-27

L-28

L-29

L-30

L-31

L-32

L-33

L-34

L-35

L-36

L-37

L-38

L-39

L-40

L-41

L-42

L-43

L-44

L-45

L-46

L-47

L-48

L-49

L-50

L-51

L-52

L-53

L-54

L-55

L-56

L-57

L-58

L-59

L-60

L-61

L-62

L-63

L-64

L-65

L-66

L-67

L-68

L-69

L-70

L-71

L-72

L-73

L-74

L-75

L-76

L-77

L-78

L-79

L-80

L-81

L-82

L-83

L-84

L-85

L-86

L-87

L-88

L-89

L-90

L-91

L-92

L-93

L-94

L-95

L-96

L-97

L-98

L-99

L-100

L-101

L-102

L-103

L-104

L-105

L-106

L-107

L-108

L-109

L-110

L-111

L-112

L-113

L-114

L-115

L-116

L-117

L-118

L-119

L-120

L-121

L-122

L-123

L-124

L-125

L-126

L-127

L-128

L-129

L-130

L-131

L-132

L-133

L-134

L-135

L-136

L-137

L-138

L-139

L-140

L-141

L-142

L-143

L-144

L-145

L-146

L-147

L-148

L-149

L-150

L-151

L-152

L-153

L-154

L-155

L-156

L-157

L-158

L-159

L-160

L-161

L-162

L-163

L-164

L-165

L-166

L-167

L-168

L-169

L-170

L-171

L-172

L-173

L-174

L-175

L-176

L-177

L-178

L-179

L-180

L-181

L-182

L-183

L-184

L-185

L-186

L-187

L-188

L-189

L-190

L-191

L-192

L-193

L-194

L-195

L-196

L-197

L-198

L-199

L-200

L-201

L-202

L-203

L-204

L-205

L-206

L-207

L-208

L-209

L-210

L-211

L-212

L-213

L-214

L-215

L-216

L-217

L-218

L-219

L-220

L-221

L-222

L-223

L-224

L-225

L-226

L-227

L-228

L-229

L-230

L-231

L-232

L-233

L-234

L-235

L-236

L-237

L-238

L-239

L-240

L-241

L-242

L-243

L-244

L-245

L-246

L-247

L-248

L-249

L-250

L-251

L-252

L-253

L-254

L-255

L-256

L-257

L-258

L-259

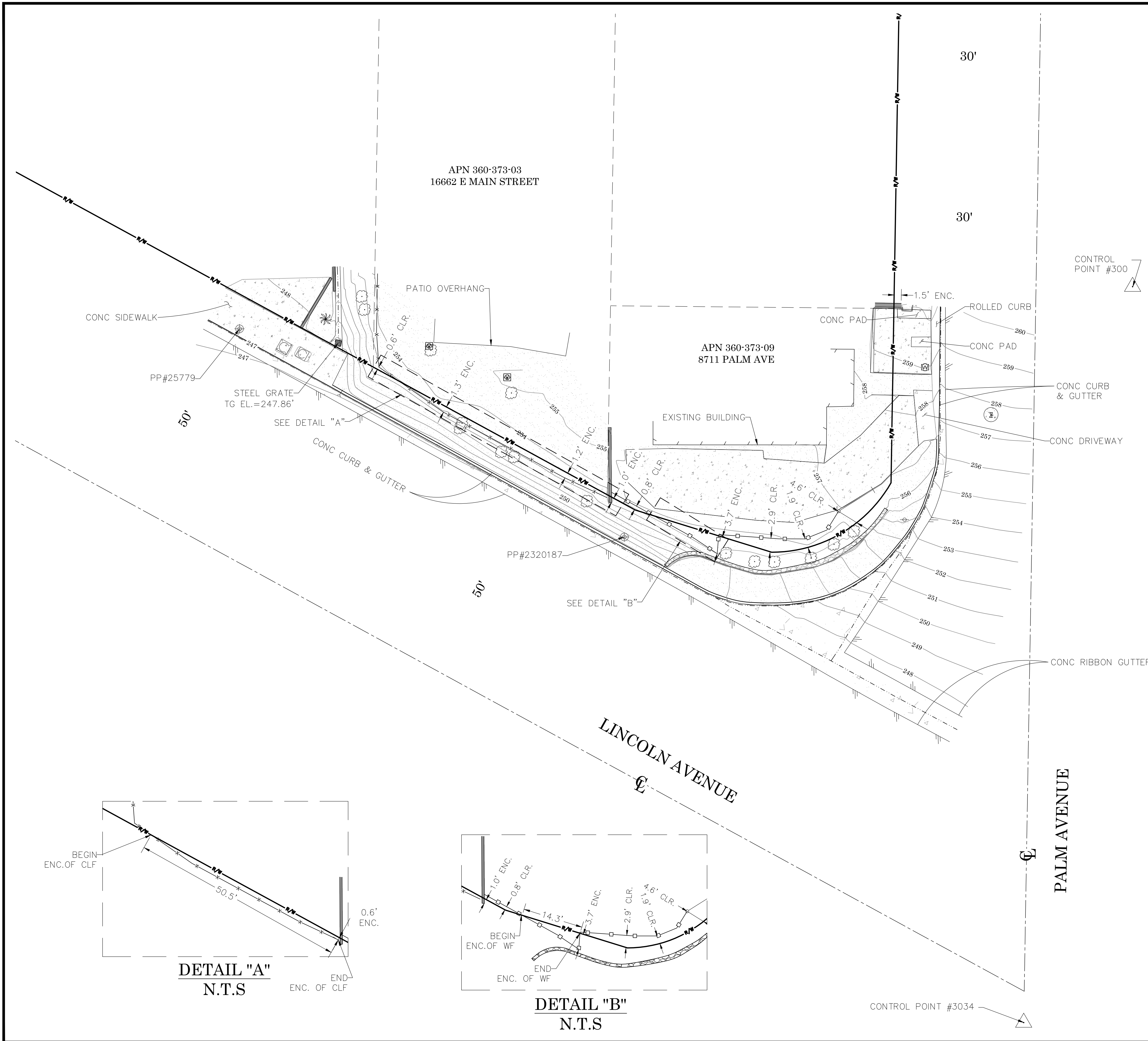
L-260

L-261

L-262

L-263

L-264



**SYMBOL PATTERN KEY**

- Fire Hydrant
- Light Pole
- Manhole-Electric
- Pull Box-Traffic
- Sign
- Storm Drain-Manhole
- Tree Undefined
- Palm Tree
- Valv-Water
- Vent Pipe
- Control Box-Cable TV
- Double Gate
- Grate Inlet
- Guy Wire
- Irrigation Stand Pipe
- Manhole-Storm Drain
- Manhole- Telephone
- Water Meter
- Pipe Outlet
- Gate Rolling
- Powerpole
- Vault-Water

**LINE PATTERN KEY**

- Edge of Asphalt Pavement
- Edge of Concrete Pavement
- Fence-Wood
- Fence-Chainlink
- Flowline
- Street Centerline
- Street R/W
- Block Wall
- Existing Building

**AREA PATTERN KEY**

- Concrete
- Dirt
- Cobblestone

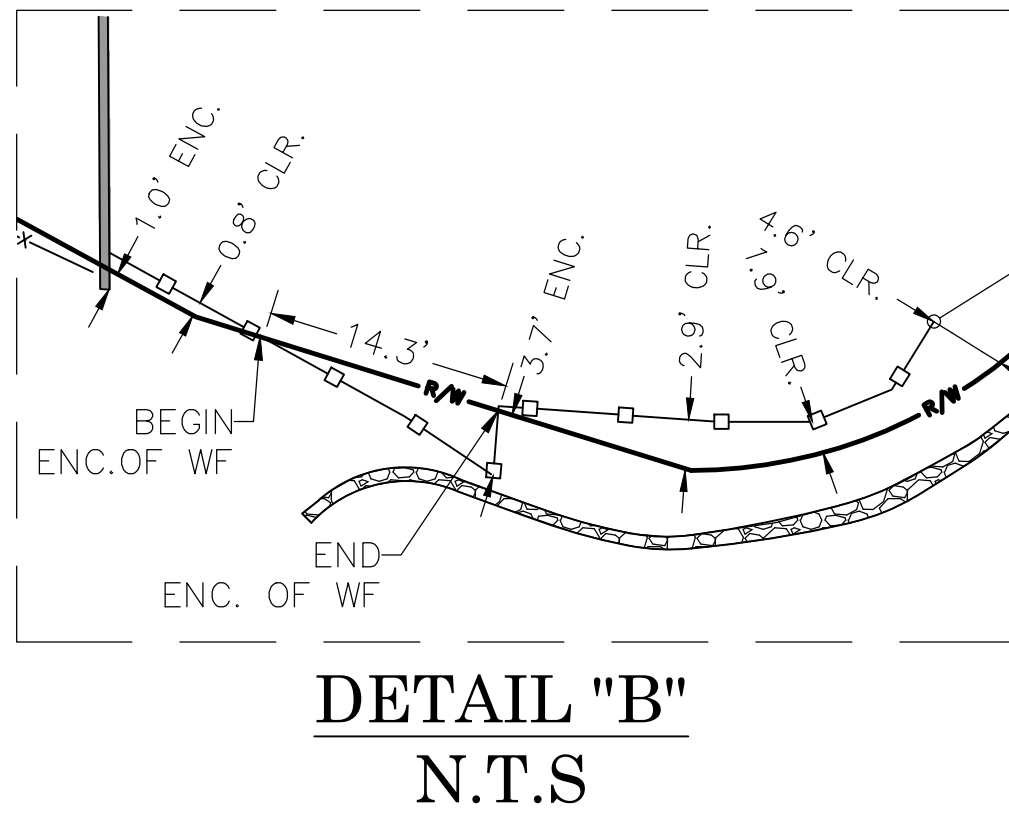
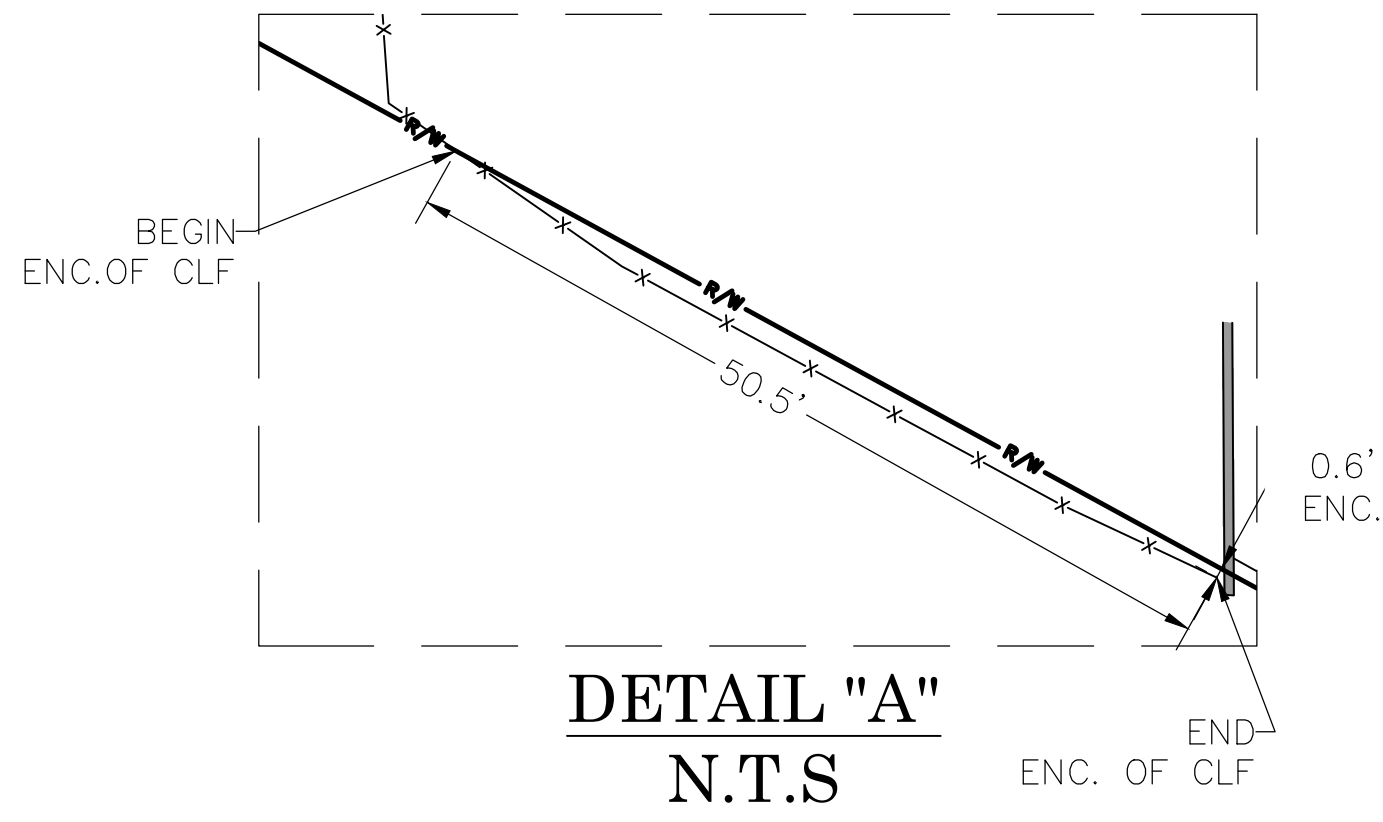
**SYMBOL PATTERN KEY**

- ENC. Encroachment
- CLR. Clearance
- WF Wood Fence
- CLF Chainlink Fence

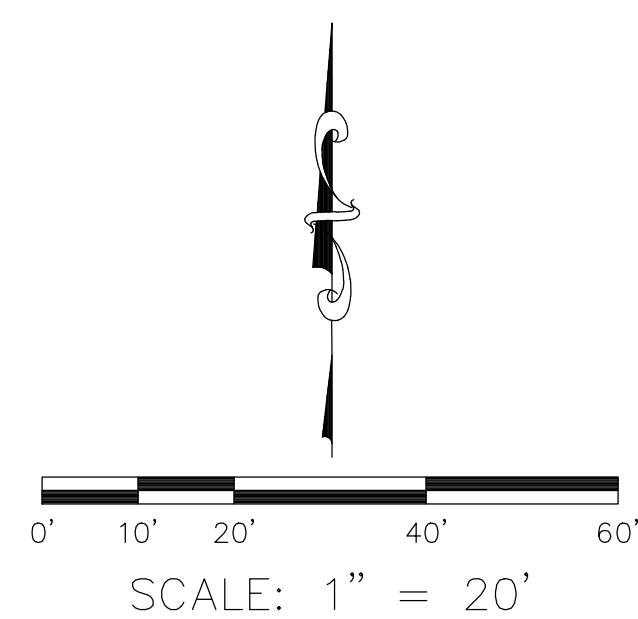
SCALE: 1" = 10'

**U.S. Survey Foot**

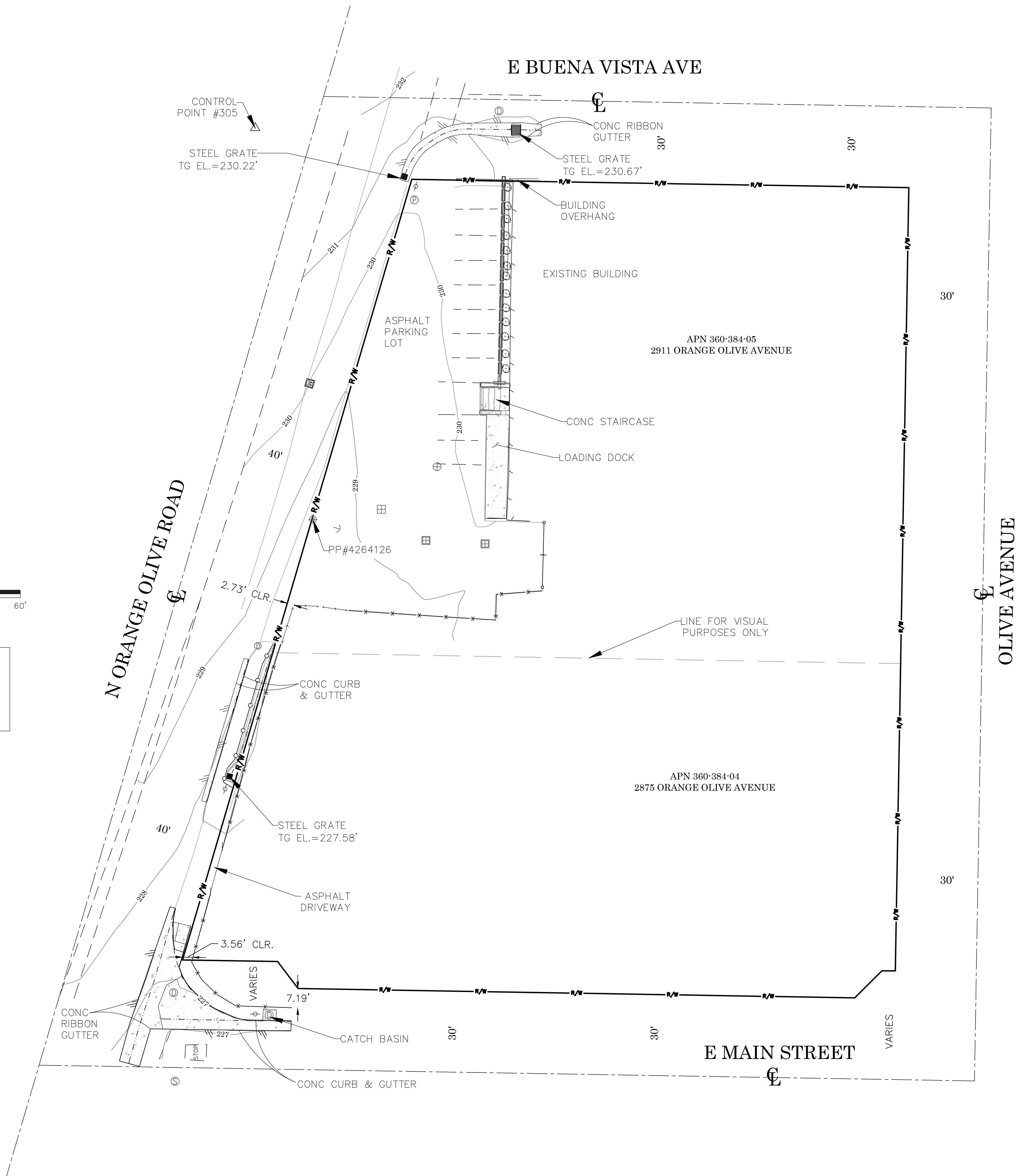
OC Public Works  
OC Survey/Field Services  
Boundary Analysis & Mapping



			COUNTY OF ORANGE OC PUBLIC WORKS OC SURVEY/FIELD SERVICES/BOUNDARY ANALYSIS & MAPPING			
			<div>OLIVE HEIGHTS AREA 1 TOPOGRAPHIC MAP</div>			
			PROJECT LIMITS: AT THE NW CORNER OF LINCOLN AVE & PALM AVE TO 200' WEST FROM THE AFOREMENTIONED INTERSECTION AND ON ORANGE OLIVE RD. FROM E MAIN STREET TO E. BUENA VISTA AVE.			
			DATE OF SURVEY: 02/06/2020		BY: R. MACIAS, PLS & PARTY	
			TOPOGRAPHIC MAPPING		BY: K. AHMED	
			OFFICE CHECK		BY: E. MEDINA, PLS.	
			FIELD CHECK		BY: R. MACIAS, PLS & PARTY	
			SCALE: 1" = 10'   W.O. #E019800S		FILE NO. 1920PW-IN0020	
			FILE: OLIVE HEIGHTS_TOPO_2020_AREA1.DWG			
MARK	DATE	ITEM				
REVISIONS						



**U.S. Survey Foot**  
OC Public Works  
OC Survey/Field Services  
Boundary Analysis & Mapping



**SYMBOL PATTERN KEY**

- Fire Hydrant
- Light Pole
- Manhole-Electric
- Pull Box-Traffic
- Sign
- Storm Drain-Manhole
- Tree Undefined
- Valv-Water
- Vent Pipe
- Control Box-Cable TV
- Double Gate
- Gate Inlet
- Guy Wire
- Irrigation Stand Pipe
- Manhole-Storm Drain
- Manhole- Telephone
- Water Meter
- Pipe Outlet
- Gate Rolling
- Powerpole
- Vault-Water

**LEGEND**

**LINE PATTERN KEY**

- Edge of Asphalt Pavement
- Edge of Concrete Pavement
- Fence-Wrought Iron
- Flowline
- Street Centerline
- Street R/W
- Stripping
- Existing Building
- Fence Pipe & Cable

**SYMBOL PATTERN KEY**

- Pull Box- Unknown
- Vault-Unknown
- Manhole-Unknown
- Sign Board
- CLR. Clearance

			COUNTY OF ORANGE OC PUBLIC WORKS OC SURVEY/FIELD SERVICES/BOUNDARY ANALYSIS & MAPPING	
			<b>OLIVE HEIGHTS AREA 2 TOPOGRAPHIC MAP</b>	
			PROJECT LIMITS: AT THE NW CORNER OF LINCOLN AVE & PALM AVE TO 200' WEST FROM THE AFOREMENTIONED INTERSECTION AND ON ORANGE OLIVE RD.	
			DATE OF SURVEY: 02/06/2020	BY: R. MACIAS & PARTY
			TOPOGRAPHIC MAPPING	BY: K. AHMED
			OFFICE CHECK	BY: E. MEDINA, PLS.
			FIELD CHECK	BY: R. MACIAS PLS & PARTY
			SCALE: 1" = 20'	W.O. #E019800S FILE NO.1920PW-IN0020
			FILE: OLIVE HEIGHTS_TOPO_2020_AREA2.DWG	
MARK	DATE	ITEM	REVISIONS	
			SHEET NO. <b>5</b> of <b>5</b>	