

SHEET 1 OF 9 SHEETS  
31 NUMBERED LOTS AND  
LOTS A THROUGH K, INCLUSIVE  
ACREAGE: 35.479 ACRES  
(ALL OF TENTATIVE  
TRACT No. 14379)

AMENDED MAP NO. 1 OF  
**TRACT NO. 14379**

IN THE CITY OF SAN JUAN CAPISTRANO,  
COUNTY OF ORANGE, STATE OF CALIFORNIA.  
BEING A SUBDIVISION OF A PORTION OF SECTION 1, T. 8 S., R. 8 W.,  
S.B.M., ALSO SHOWN ON R.S. NO. 92-1121, RECORDED IN BOOK 146 PAGES  
28 AND 29 OF RECORDS OF SURVEY, OF ORANGE COUNTY, CALIFORNIA.

HUNSAKER AND ASSOCIATES IRVINE, INC.  
TOM R. McGANNON, R.C.E. 23956 DATE OF SURVEY: NOVEMBER, 1997

**OWNERSHIP CERTIFICATE:**

WE, THE UNDERSIGNED, BEING ALL PARTIES HAVING ANY RECORD TITLE INTEREST IN THE LAND COVERED BY THIS MAP, DO HEREBY CONSENT TO THE PREPARATION AND RECORDATION OF SAID MAP, AS SHOWN WITHIN THE DISTINCTIVE BORDER LINE.

WE ALSO HEREBY DEDICATE TO THE PUBLIC FOR STREET PURPOSES: FUTURE EXTENSION OF ALIPAZ STREET, AS SHOWN ON THIS TRACT MAP.

WE ALSO HEREBY GRANT TO THE CITY OF SAN JUAN CAPISTRANO THE FOLLOWING:

THE EASEMENTS FOR EMERGENCY AND PUBLIC SECURITY, INGRESS AND EGRESS PURPOSES WITHIN OLD SAN JUAN ROAD, PRIVATE STREET, RIGHT OF WAY.

THE EASEMENTS FOR STORM DRAIN, DRAINAGE MAINTENANCE AND EMERGENCY INGRESS AND EGRESS PURPOSES, OVER LOT C, AS SHOWN ON THIS MAP.

THE EASEMENTS FOR STORM DRAIN, DRAINAGE MAINTENANCE AND EQUESTRIAN TRAIL PURPOSES, OVER LOTS D AND I, AS SHOWN ON THIS MAP (EXCLUDING SLOPE AND LANDSCAPE MAINTENANCE, WHICH SHALL BE THE RESPONSIBILITY OF THE HOMEOWNER'S ASSOCIATION.)

THE EASEMENTS FOR STORM DRAIN AND DRAINAGE MAINTENANCE PURPOSES, OVER LOT E, AS SHOWN ON THIS MAP. (EXCLUDING SLOPE AND LANDSCAPE MAINTENANCE, WHICH SHALL BE THE RESPONSIBILITY OF THE HOMEOWNER'S ASSOCIATION.)

THE SANITARY SEWER SYSTEM AND APPURTENANCES AS SHOWN ON THE IMPROVEMENT PLANS FOR THIS TRACT.

THE IRREVOCABLE OFFER OF EASEMENTS FOR ACCESS, UTILITY AND PUBLIC FACILITY PURPOSES, OVER OLD SAN JUAN ROAD, CONDITIONALLY, OVER THE NORTHERLY PORTION OF LOT 13 AND PORTIONS OF LOTS D AND G, "OFFER F". IF AND WHEN SAID OFFER "F" IS SEPARATELY ACCEPTED BY THE CITY OF SAN JUAN CAPISTRANO.

"OFFER F" IS CONDITIONAL, AND IS FOR THE BENEFIT OF ONE POSSIBLE FUTURE SINGLE FAMILY RESIDENTIAL ON A PORTION OF LANDS DESCRIBED IN A DEED OF TRUST, DOCUMENT NO. 91-008007, OFFICIAL RECORDS OF ORANGE COUNTY.

THE IRREVOCABLE OFFER OF EASEMENT FOR AN ALTERNATE ENTRY, ACCESS, UTILITY AND PUBLIC FACILITY PURPOSES, CONDITIONALLY OVER A PORTION OF LOT 1, AS SHOWN ON THIS MAP, "OFFER E". IF AND WHEN SAID "OFFER E" IS SEPARATELY ACCEPTED BY THE CITY OF SAN JUAN CAPISTRANO.

"OFFER E" IS CONDITIONAL, AND FOR THE BENEFIT OF AN ALTERNATE ENTRY THAT WOULD BE COMPATIBLE WITH FUTURE EXTENSION OF ALIPAZ STREET, IF AND WHEN SAID POSSIBLE PUBLIC STREET IS CONSTRUCTED.

WE ALSO HEREBY OFFER FOR DEDICATION TO CAPISTRANO VALLEY WATER DISTRICT:

THE WATER RIGHTS INCLUDED WITHIN, OR APPURTENANT TO, THE LAND LYING WITHIN THE DISTINCTIVE BORDER OF THIS MAP.

PERPETUAL EASEMENT FOR INGRESS AND EGRESS, AND FOR DOMESTIC AND NON DOMESTIC WATER SYSTEMS AND APPURTENANCES, INCLUDING FIRE HYDRANT LOCATIONS, IN, OVER, AND ACROSS THE STREET AND WAYS SHOWN ON THIS MAP, NAMELY:

LOT C,  
FUTURE EXTENSION OF ALIPAZ STREET,  
OLD SAN JUAN ROAD (PRIVATE STREET),  
OFFER "F", A POSSIBLE FUTURE DRIVEWAY ACROSS A PORTION OF LOTS 13, D AND G; IF AND WHEN SAID "OFFER F" IS ACCEPTED BY CITY OF SAN JUAN CAPISTRANO FOR DRIVEWAY PURPOSES IN ACCORDANCE WITH ITS DRIVEWAY CONDITIONS OF APPROVAL.  
"OFFER E", A POSSIBLE FUTURE ENTRY ACROSS A PORTION OF LOTS 1, B, D, H, I AND J; IF AND WHEN SAID "OFFER E" IS ACCEPTED BY CITY OF SAN JUAN CAPISTRANO FOR ENTRY AND PRIVATE GATE PURPOSES IN ACCORDANCE WITH ITS CONDITIONS OF APPROVAL.

LOT A IS SLOPED LANDS ABOVE SOUTH AND WEST EDGES OF PROJECT IMPROVEMENTS. LANDS ARE SUBJECT TO DEFINED VEGETATION AND FUEL MODIFICATION.

LOTS B, F, G & J ARE MARGINAL LANDS EASTERLY OF PROJECT IMPROVEMENTS. LANDS ARE SUBJECT TO DEFINED DROUGHT TOLERANT LANDSCAPING.

LOT C CONTAINS A MAINTENANCE ROAD WITH VEGETATED SLOPES AND DRAINAGE FACILITIES. THE DRAINS ARE BOTH PAVED OPEN CHANNELS AND UNDERGROUND STORM DRAIN CONDUITS. A PORTION OF THE LOT C SERVES AS THE ACCESS FOR LOTS 17, 18 & 19. LOT C IS NOT A TRAIL.

LOT D IS FOR A PUBLIC EQUESTRIAN "FEEDER" TRAIL. IT IS A PUBLIC FACILITY SERVING PUBLIC EQUESTRIAN PASSAGE THROUGH TRACT NO. 14379 WITHOUT ACCESS TO THE STREETS AND LOTS OF THE TRACT.

LOT E IS FOR THE MAINTENANCE OF AN UNDERGROUND SEWERAGE EFFLUENT PIPELINE BY PUBLIC WATER DISTRICTS. IT IS ALSO FOR THE MAINTENANCE OF SURFACE DRAINAGE INTERCEPTION AND CONVEYANCE STRUCTURES. IT IS ALSO A PRIVATE EQUESTRIAN TRAIL ACCESS ROUTE FOR LOTS 20 THROUGH 31 ONLY. THE TRAIL JOINS A PUBLIC FEEDER TRAIL AT A POINT NORTHWESTERLY AND BEYOND THE TRACT BOUNDARY.

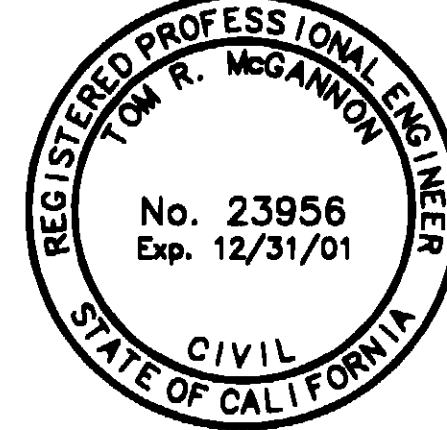
LOT H IS FOR VERY STRICTLY DEFINED, AND INFREQUENT SHORT-TERM PASSAGE OF MOTOR VEHICLES BETWEEN A CERTAIN POINT ON THE SIDE OF ALIPAZ STREET (PUBLIC) AND OFFSITE EXISTING EQUESTRIAN DEVELOPMENTS IN THE FLOOD PLAIN OF TRABUCO CREEK. THE PERIODS OF PASSAGE ARE ONLY WHEN FLOOD WATERS IN TRABUCO CREEK TEMPORARILY PREVENT ACCESS TO THOSE EQUESTRIAN DEVELOPMENTS FROM A CERTAIN OFFSITE PUBLIC STREET, AVENIDA DE LA VISTA. LOT H IS MAINTAINED BY TRACT 14379 HOMEOWNERS ASSOCIATION.

LOT I HAS THE SAME PURPOSE AS LOT D, AND THE SAME INFREQUENT SHORT TERM PURPOSES AS LOT H. LOT I IS MAINTAINED BY TRACT 14379 HOMEOWNERS ASSOCIATION.

**ENGINEER'S STATEMENT:**

I HEREBY STATE THAT I HAVE PREPARED THIS AMENDING MAP OR IT WAS PREPARED UNDER MY DIRECTION IN NOVEMBER, 1997, AND THE CHANGES SHOWN HEREON ARE AS PROVIDED FOR IN SECTION 66469 & 66472.1 OF THE SUBDIVISION MAP ACT.

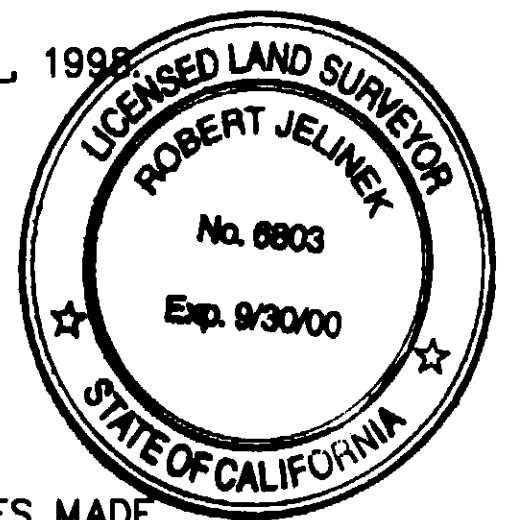
Tam R. McGannon  
TOM R. McGANNON, R.C.E. 23956  
REGISTRATION EXPIRES: 12/31/01



**COUNTY SURVEYOR'S STATEMENT:**

THIS MAP IS ACCEPTABLE FOR RECORDATION THIS 24th DAY OF September, 1998.

By: Robert Jelinek  
JOHN CANAS, COUNTY SURVEYOR Deputy County Surveyor



**CITY ENGINEER'S STATEMENT:**

I HEREBY STATE THAT I HAVE EXAMINED THIS AMENDING MAP AND THE ONLY CHANGES MADE ARE THOSE PROVIDED FOR IN SECTION 66469 AND SECTION 66472.1 OF THE SUBDIVISION MAP ACT.

DATED THIS 24th DAY OF July, 1998.

William M. Huber  
WILLIAM HUBER, R.C.E. 31785 REGISTRATION EXPIRES: 12/31/00  
DIRECTOR OF ENGINEERING AND BUILDING,  
CITY OF SAN JUAN CAPISTRANO

**COUNTY TREASURER-TAX COLLECTOR'S CERTIFICATE:**

STATE OF CALIFORNIA )  
COUNTY OF ORANGE ) SS  
CITY OF SAN JUAN CAPISTRANO )

I HEREBY CERTIFY THAT ACCORDING TO THE RECORDS OF MY OFFICE, THERE ARE NO LIENS AGAINST THE LAND COVERED BY THIS MAP OR ANY PART THEREOF FOR UNPAID STATE, COUNTY, MUNICIPAL OR LOCAL TAXES OR SPECIAL ASSESSMENTS COLLECTED AS TAXES, OR SPECIAL ASSESSMENTS COLLECTED AS TAXES NOT YET PAYABLE.

AND DO ALSO CERTIFY TO THE RECORDER OF ORANGE COUNTY THAT THE PROVISIONS OF THE SUBDIVISION MAP ACT HAVE BEEN COMPLIED WITH REGARDING DEPOSITS TO SECURE THE PAYMENT OF TAXES OR SPECIAL ASSESSMENTS COLLECTED AS TAXES ON THE LAND COVERED BY THIS MAP.

DATED THIS 30 DAY OF July, 1998.

JOHN M. W. MOORLACH  
COUNTY TREASURER-TAX COLLECTOR

BY: Dan R. Blanton  
DEPUTY TREASURER - TAX COLLECTOR

**CITY CLERK'S CERTIFICATE:**

STATE OF CALIFORNIA )  
COUNTY OF ORANGE ) SS  
CITY OF SAN JUAN CAPISTRANO )

I HEREBY CERTIFY THAT THIS MAP WAS PRESENTED FOR APPROVAL TO THE CITY COUNCIL OF THE CITY OF SAN JUAN CAPISTRANO AT A REGULAR MEETING THEREOF HELD ON THE 24th DAY OF July, 1998, AND THAT THEREUPON SAID COUNCIL DID, BY AN ORDER DULY PASSED AND ENTERED, APPROVE SAID MAP AND DID ALSO ACCEPT ON BEHALF OF THE PUBLIC, SUBJECT TO IMPROVEMENTS BY CITY; THE DEDICATION FOR STREET PURPOSES OF: FUTURE EXTENSION OF ALIPAZ STREET, AS DEDICATED.

- AND DID ALSO ACCEPT ON BEHALF OF THE CITY OF SAN JUAN CAPISTRANO:
- ☒ THE EASEMENTS FOR EMERGENCY AND PUBLIC SECURITY, INGRESS AND EGRESS PURPOSES WITHIN OLD SAN JUAN ROAD, AS DEDICATED.
  - ☒ THE EASEMENTS FOR STORM DRAIN, DRAINAGE MAINTENANCE AND EMERGENCY INGRESS AND EGRESS PURPOSES, AS DEDICATED.
  - ☒ THE EASEMENTS FOR STORM DRAIN, DRAINAGE MAINTENANCE AND EQUESTRIAN TRAIL PURPOSES, AS DEDICATED.
  - ☒ THE EASEMENTS FOR STORM DRAIN AND DRAINAGE MAINTENANCE PURPOSES, AS DEDICATED. THE SANITARY SEWER SYSTEM AND APPURTENANCES, AS DEDICATED.

AND DID NOT ACCEPT ON BEHALF OF THE PUBLIC:

THE CONDITIONAL IRREVOCABLE OFFER OF EASEMENT, "OFFER F", AT THIS TIME, AS CONDITIONED, AND AS CONDITIONALLY OFFERED. CITY OF SAN JUAN CAPISTRANO RESERVES THE RIGHT TO ACCEPT "OFFER F", IMPROVED, AT A LATER DATE.  
THE CONDITIONAL IRREVOCABLE OFFER OF EASEMENT, "OFFER E", AT THIS TIME, AS CONDITIONED, AND AS CONDITIONALLY OFFERED. CITY OF SAN JUAN CAPISTRANO RESERVES THE RIGHT TO ACCEPT "OFFER E", IMPROVED, AT A LATER DATE.

WE ALSO HEREBY ABANDON, PURSUANT TO SECTION 66499.20 1/2 OF THE SUBDIVISION MAP ACT, THE EASEMENTS, AND SANITARY SEWER SYSTEM AND APPURTENANCES WITHIN THE BOUNDARY OF THIS MAP WHICH WERE ACQUIRED BY THE CITY OF SAN JUAN CAPISTRANO, PER THE MAP OF TRACT NO. 14379, RECORDED IN BOOK 759, PAGES 14 THROUGH 20, INCLUSIVE, OF MISCELLANEOUS MAPS, IN THE OFFICE OF THE COUNTY RECORDER OF ORANGE COUNTY, CALIFORNIA, NOT SHOWN ON THIS MAP.

AND DID ALSO APPROVE SUBJECT MAP PURSUANT TO PROVISIONS OF SECTION 66436(a)(3)(A) OF THE SUBDIVISION MAP ACT.

DATED THIS 8th DAY OF July, 1998.

Cheryl Pham  
CITY CLERK, CITY OF SAN JUAN CAPISTRANO

**SIGNATURE OMISSIONS:**

PURSUANT TO THE PROVISIONS OF SECTION 66436 (a)(3)(A) OF THE SUBDIVISION MAP ACT, THE FOLLOWING SIGNATURES HAVE BEEN OMITTED:

- TRABUCO WATER COMPANY, HOLDER OF EASEMENTS RECORDED IN BOOK 5341, PAGE 280 OF OFFICIAL RECORDS, AND IN BOOK 64, PAGE 202 OF DEEDS.
- CITY OF SAN JUAN CAPISTRANO, HOLDER OF AN EASEMENT RECORDED IN BOOK 8422, PAGE 973, OF OFFICIAL RECORDS.
- COUNTY OF ORANGE, HOLDER OF AN EASEMENT RECORDED IN BOOK 6798, PAGE 230 OF OFFICIAL RECORDS.
- SANTA MARGARITA WATER DISTRICT AND MOULTON NIGUEL WATER DISTRICT HOLDERS, OF AN EASEMENT FOR WATER, RECLAIMED WATER AND SEWER FACILITIES PURPOSES PER INST. NO. 19980218037 AND INST. NO. 19980218041 BOTH OF OFFICIAL RECORDS.
- CAPISTRANO WATER COMPANY, HOLDER OF EASEMENT RECORDED IN BOOK 71, PAGE 49 OF DEEDS.
- ORANGE COUNTY FLOOD CONTROL DISTRICT, HOLDER OF EASEMENTS RECORDED IN BOOK 894, PAGE 358 AND IN BOOK 896, PAGE 454; BOTH OF OFFICIAL RECORDS.

SEE SHEET 4 FOR OWNERS AND CAPISTRANO VALLEY WATER DISTRICT SIGNATURES AND ACKNOWLEDGMENTS.

SEE SHEET 5 FOR BENEFICIARIES SIGNATURES AND ACKNOWLEDGMENTS.



SHEET 2 OF 9 SHTS  
NO SCALE  
SURVEY DATE: SEPT. 1992  
ELMER L. CHRISTIANSEN  
R.C.E. 10609

AMENDED MAP NO. 1 OF  
TRACT NO. 14379

ACCEPTED AND FILED AT THE  
REQUEST OF

FIRST AMERICAN TITLE INSURANCE CO.

DATE SEPTEMBER 25, 1998  
TIME 4:30pm FEE \$ 23.00  
INSTRUMENT # 19980648318 MM  
BOOK 774 PAGE 40-48

GARY L. GRANVILLE  
COUNTY-CLERK RECORDER

BY [Signature]  
DEPUTY

BLOCK MODULE  
4856 96 AND 97  
5956 15-17 AND 25-27

IN THE CITY OF SAN JUAN CAPISTRANO, ORANGE COUNTY, CA.  
BEING A SUBDIVISION OF POR. OF SEC.1, T8S, R8W, SBM, ALSO SHOWN ON R.S.  
NO. 92-1121 RECORDED IN BOOK 146 PAGES 28 AND 29 OF RECORDS OF SURVEY  
OF ORANGE COUNTY, CALIFORNIA

35.503 ACRES TOTAL  
24 LOTS

CHRISTIANSEN & ASSOCIATES

JUNE 1996

OWNERSHIP CERTIFICATE

WE, THE UNDERSIGNED, BEING ALL PARTIES HAVING ANY RECORD TITLE INTEREST  
IN THE LAND COVERED BY THIS MAP, DO HEREBY CONSENT TO THE PREPARATION  
AND RECORDATION OF SAID MAP, AS SHOWN WITHIN THE DISTINCTIVE BORDER  
LINE.

WE ALSO HEREBY DEDICATE TO THE PUBLIC FOR STREET PURPOSES: FUTURE EXTENSION  
OF ALIPAZ STREET, AS SHOWN ON THIS TRACT MAP.

WE ALSO HEREBY GRANT TO THE CITY OF SAN JUAN CAPISTRANO THE FOLLOWING:

1. THE EASEMENT FOR EMERGENCY AND PUBLIC SECURITY, INGRESS AND EGRESS  
PURPOSES WITHIN OLD SAN JUAN ROAD, PRIVATE STREET, RIGHT OF WAY.
2. THE EASEMENT FOR STORM DRAIN, DRAINAGE MAINTENANCE, AND EMERGENCY  
INGRESS AND EGRESS PURPOSES: LOT C.
3. THE EASEMENTS FOR STORM DRAIN, DRAINAGE MAINTENANCE, AND EQUESTRIAN  
TRAIL PURPOSES: LOT D (EXCLUDING SLOPE AND LANDSCAPE MAINTENANCE,  
WHICH SHALL BE THE RESPONSIBILITY OF THE HOMEOWNERS ASSOCIATION.)
4. THE EASEMENTS FOR STORM DRAIN AND DRAINAGE MAINTENANCE PURPOSES:  
LOT E (EXCLUDING SLOPE AND LANDSCAPE MAINTENANCE, WHICH SHALL  
BE THE RESPONSIBILITY OF THE HOMEOWNERS ASSOCIATION.)
5. THE SANITARY SEWER SYSTEM & APPURTENANCES AS SHOWN ON THE  
IMPROVEMENT PLANS FOR THIS TRACT.
6. AN IRREVOCABLE OFFER OF EASEMENT FOR ACCESS, UTILITY, & PUBLIC FACILITY  
PURPOSES, ALONG THE PRIVATE STREET OLD SAN JUAN ROAD, AND; CONDITIONALLY, OVER  
THE SOUTHERLY PORTION OF LOT 12: "OFFER F". IF AND WHEN SAID "OFFER F" IS  
SEPARATELY ACCEPTED BY THE CITY OF SAN JUAN CAPISTRANO.

"OFFER F" IS CONDITIONAL, AND IS FOR THE BENEFIT OF ONE POSSIBLE  
FUTURE SINGLE FAMILY RESIDENTIAL LOT ON A PORTION OF LANDS  
DESCRIBED IN A DEED OF TRUST, DOCUMENT NO. 91-008007, OFFICIAL  
RECORDS OF ORANGE COUNTY.

7. AN IRREVOCABLE OFFER OF EASEMENT FOR AN ALTERNATE ENTRY, ACCESS, UTILITY, &  
PUBLIC FACILITY PURPOSES, CONDITIONALLY OVER A PORTION OF LOT 1: "OFFER E".  
IF AND WHEN SAID "OFFER E" IS SEPARATELY ACCEPTED BY THE CITY OF SAN JUAN  
CAPISTRANO.

"OFFER E" IS CONDITIONAL, AND FOR THE BENEFIT OF AN ALTERNATE ENTRY  
THAT WOULD BE COMPATIBLE WITH FUTURE EXTENSION OF ALIPAZ STREET, IF AND  
WHEN SAID POSSIBLE PUBLIC STREET IS CONSTRUCTED.

WE ALSO HEREBY OFFER FOR DEDICATION TO CAPISTRANO VALLEY WATER DISTRICT:

1. THE WATER RIGHTS INCLUDED WITHIN, OR APPURTENANT TO, THE LAND LYING  
WITHIN THE DISTINCTIVE BORDER OF THIS MAP.
2. PERPETUAL EASEMENT FOR INGRESS AND EGRESS, AND FOR DOMESTIC WATER SYSTEMS  
AND APPURTENANCES, INCLUDING FIRE HYDRANT LOCATIONS, IN, OVER, AND ACROSS  
THE STREET AND WAYS SHOWN ON THIS MAP, NAMELY:  
FUTURE EXTENSION OF ALIPAZ STREET,  
OLD SAN JUAN ROAD (PRIVATE STREET),  
OFFER "F", A POSSIBLE FUTURE DRIVEWAY ACROSS A PORTION OF LOT 12; IF AND WHEN  
SAID "OFFER F" IS ACCEPTED BY CITY OF SAN JUAN CAPISTRANO FOR DRIVEWAY  
PURPOSES IN ACCORDANCE WITH ITS DRIVEWAY CONDITIONS OF APPROVAL.  
"OFFER E", A POSSIBLE FUTURE ENTRY ACROSS A PORTION OF LOT 1; IF AND WHEN SAID  
"OFFER E" IS ACCEPTED BY CITY OF SAN JUAN CAPISTRANO FOR ENTRY AND  
PRIVATE GATE PURPOSES IN ACCORDANCE WITH ITS CONDITIONS OF APPROVAL.

By: SAN JUAN ENCLAVE LLC,  
A CALIFORNIA LIMITED LIABILITY COMPANY

By: WOODBRIDGE DEVELOPMENT,  
A CALIFORNIA GENERAL PARTNERSHIP, MEMBER

By: WOODBRIDGE DEVELOPMENT, INC.,  
A CALIFORNIA CORPORATION, GENERAL PARTNER

By: [Signature]  
TODD S. CUNNINGHAM, PRESIDENT

By: [Signature]  
MICHAEL W. KERR, VICE PRESIDENT/SECRETARY

By: WOODBRIDGE COMMUNITIES LLC,  
A CALIFORNIA LIMITED LIABILITY COMPANY, GENERAL PARTNER

By: [Signature]  
TODD S. CUNNINGHAM, PRESIDENT

By: [Signature]  
MICHAEL W. KERR, VICE PRESIDENT/SECRETARY

By: WOODBRIDGE DEVELOPMENT, INC.,  
A CALIFORNIA CORPORATION, MEMBER

By: [Signature]  
TODD S. CUNNINGHAM, PRESIDENT

By: [Signature]  
MICHAEL W. KERR, VICE PRESIDENT/SECRETARY

STATE OF CALIFORNIA )  
COUNTY OF ORANGE ) SS.

ON August 14, 1997, BEFORE ME, Celeste Littleton, Notary Public  
PERSONALLY APPEARED TODD S. CUNNINGHAM AND MICHAEL W. KERR, PERSONALLY KNOWN TO ME,  
OR PROVED TO ME ON THE BASIS OF SATISFACTORY EVIDENCE, TO BE THE PERSONS WHOSE NAMES ARE  
SUBSCRIBED TO THE WITHIN INSTRUMENT AND ACKNOWLEDGED TO ME THAT THEY EXECUTED THE SAME  
IN THEIR AUTHORIZED CAPACITIES, AND THAT BY THEIR SIGNATURE ON THE INSTRUMENT THE PERSONS,  
OR THE ENTITY UPON BEHALF OF WHICH THE PERSONS ACTED, EXECUTED THE INSTRUMENT.

WITNESS MY HAND:

NOTARY PUBLIC IN AND FOR SAID STATE

Celeste Littleton Comm. # 035974  
(NAME)

MY PRINCIPAL PLACE OF BUSINESS IS IN Orange COUNTY.  
MY COMMISSION EXPIRES August 14, 1998

ENGINEER'S STATEMENT

I HEREBY STATE THAT I AM A REGISTERED CIVIL ENGINEER OF THE STATE OF  
CALIFORNIA; THAT THIS MAP CONSISTING OF 2 SHEETS AND THE TRUE AND  
COMPLETE SURVEY MADE IN SEPTEMBER 1992, WHICH IT CORRECTLY REPRESENTS  
WERE BOTH MADE BY ME OR UNDER MY DIRECTION; THAT THE MONUMENTS ARE OF  
THE CHARACTER AND OCCUPY (OR WILL OCCUPY) THE POSITIONS INDICATED BY  
SAID MAP AND THE MONUMENT NOTES NOTED THEREON, AND THAT SAID MONUMENTS  
ARE SUFFICIENT TO ENABLE THE SURVEY TO BE RETRACED.



[Signature]  
ELMER L. CHRISTIANSEN, R.C.E. 10609  
MY REGISTRATION EXPIRES 12-31-00.

CITY ENGINEER'S STATEMENT

I HEREBY STATE THAT I HAVE EXAMINED THIS MAP AND HAVE FOUND IT TO BE  
SUBSTANTIALLY IN CONFORMANCE WITH THE TENTATIVE MAP, AS REQUIRED, AS  
FILED WITH, AMENDED AND APPROVED BY THE CITY PLANNING COMMISSION; THAT  
ALL PROVISIONS OF THE SUBDIVISION MAP ACT AND CITY SUBDIVISION  
REGULATIONS HAVE BEEN COMPLIED WITH AND THE MAP IS TECHNICALLY CORRECT  
IN ALL RESPECTS NOT CERTIFIED TO BY THE COUNTY SURVEYOR.

DATED THIS 8th DAY OF October, 1997.

[Signature]  
WILLIAM M. HUBER, R.C.E. 54785  
My registration expires 12-31-00  
DIR. OF ENGINEERING & BUILDING,  
CITY OF SAN JUAN CAPISTRANO

CITY CLERK'S CERTIFICATE

I HEREBY CERTIFY THAT THIS MAP WAS PRESENTED FOR APPROVAL TO THE CITY  
COUNCIL OF THE CITY OF SAN JUAN CAPISTRANO AT A REGULAR MEETING THEREOF  
HELD ON THE 7th DAY OF October, 1997, AND THAT THEREUPON  
SAID COUNCIL DID, BY AN ORDER DULY PASSED AND ENTERED, APPROVE SAID MAP  
AND DID ALSO ACCEPT ON BEHALF OF THE PUBLIC, SUBJECT TO IMPROVEMENTS BY CITY;  
THE DEDICATION FOR STREET PURPOSES OF: FUTURE EXTENSION OF ALIPAZ STREET.

AND DID ALSO ACCEPT ON BEHALF OF THE CITY OF SAN JUAN CAPISTRANO:

1. THE EASEMENT FOR EMERGENCY AND PUBLIC SECURITY, INGRESS AND EGRESS  
PURPOSES WITHIN OLD SAN JUAN ROAD AS GRANTED.
2. THE EASEMENT FOR STORM DRAIN, DRAINAGE MAINTENANCE & EMERGENCY INGRESS  
AND EGRESS AS GRANTED.
3. THE EASEMENT FOR STORM DRAIN, DRAINAGE MAINTENANCE AND EQUESTRIAN  
TRAIL AS GRANTED.
4. THE EASEMENT FOR STORM DRAIN AND DRAINAGE MAINTENANCE AS GRANTED.
5. THE SANITARY SEWER SYSTEM & APPURTENANCES AS DEDICATED.

AND DID NOT ACCEPT ON BEHALF OF THE PUBLIC:

1. THE CONDITIONAL IRREVOCABLE OFFER OF EASEMENT, "OFFER F", AT THIS TIME,  
AS CONDITIONED, AND AS CONDITIONALLY OFFERED. CITY OF SAN JUAN  
CAPISTRANO RESERVES THE RIGHT TO ACCEPT "OFFER F", IMPROVED, AT A  
LATER DATE.
2. THE CONDITIONAL IRREVOCABLE OFFER OF EASEMENT, "OFFER E", AT THIS TIME,  
AS CONDITIONED, AND AS CONDITIONALLY OFFERED. CITY OF SAN JUAN  
CAPISTRANO RESERVES THE RIGHT TO ACCEPT "OFFER E", IMPROVED, AT A  
LATER DATE.

AND DID ALSO APPROVE SUBJECT MAP PURSUANT TO PROVISIONS OF SECTION  
66436(a)(3)(A) OF THE SUBDIVISION MAP ACT.

DATED THIS 8th DAY OF October, 1997.

[Signature]  
CITY CLERK, CITY OF SAN JUAN CAPISTRANO

COUNTY SURVEYOR'S STATEMENT

I HEREBY STATE THAT I HAVE EXAMINED THIS MAP AND HAVE FOUND THAT ALL  
MAPPING PROVISIONS OF THE SUBDIVISION MAP ACT HAVE BEEN COMPLIED WITH  
AND I AM SATISFIED SAID MAP IS TECHNICALLY CORRECT RELATIVE TO THE TRACT  
MAP BOUNDARY.

DATED THIS 24th DAY OF October, 1997.

[Signature]  
JOHN CANAS, COUNTY SURVEYOR



CERTIFICATE OF ACCEPTANCE - CAPISTRANO VALLEY WATER DISTRICT

I HEREBY STATE THAT THIS MAP WAS PRESENTED TO THE BOARD OF DIRECTORS OF  
THE CAPISTRANO VALLEY WATER DISTRICT FOR ACCEPTANCE OF THE WATER RIGHTS,  
AS OFFERED, AND THE NON-EXCLUSIVE EASEMENTS DEDICATED FOR ACCESS, INGRESS,  
AND EGRESS, AS OFFERED, OVER STREETS, AND AS CONDITIONALLY OFFERED, OVER  
"OFFER F" AND "OFFER E", AT A REGULAR MEETING THEREOF HELD ON THE 7th  
DAY OF October, 1997.

AND THAT HEREUPON SAID BOARD DID, BY AN ORDER DULY PASSED AND ENTERED,  
ACCEPT THE WATER RIGHTS, THE EASEMENTS AND APPURTENANCES, AS OFFERED.

[Signature]

SEE SHEET 3 FOR SIGNATURE OMISSIONS.  
SEE SHEET 4 FOR OWNERS AND CAPISTRANO VALLEY WATER  
DISTRICT SIGNATURES AND ACKNOWLEDGMENTS.  
SEE SHEET 5 FOR BENEFICIARIES SIGNATURES AND ACKNOWLEDGMENT.

SHEET 3 OF 9 SHTS  
NO SCALE  
SURVEY DATE: SEPT. 1992  
ELMER L. CHRISTIANSEN  
R.C.E. 10609

AMENDED MAP NO. 1 OF  
TRACT NO. 14379

IN THE CITY OF SAN JUAN CAPISTRANO, ORANGE COUNTY, CA.  
BEING A SUBDIVISION OF POR. OF SEC.1, T8S, R8W, SBM, ALSO SHOWN ON R.S.  
NO. 92-1121 RECORDED IN BOOK 146 PAGES 28 AND 29 OF RECORDS OF SURVEY  
OF ORANGE COUNTY, CALIFORNIA

BENEFICIARY CERTIFICATES

WITTENBERG-LIVINGSTON, INC., A CALIFORNIA CORPORATION AS BENEFICIARY, UNDER DEED OF TRUST  
RECORDED OCTOBER 15, 1996, AS INSTRUMENT NO. 19960523894, OF OFFICIAL RECORDS.

By: Eric A. Wittenberg  
ERIC A. WITTENBERG, PRESIDENT

STATE OF CALIFORNIA )  
COUNTY OF ORANGE ) SS.

ON 23 AUGUST 1997, BEFORE ME, PATT B. CONCANNON, Notary Public  
PERSONALLY APPEARED ERIC A. WITTENBERG, PERSONALLY KNOWN TO ME,  
OR PROVED TO ME ON THE BASIS OF SATISFACTORY EVIDENCE, TO BE THE PERSON WHOSE NAME IS  
SUBSCRIBED TO THE WITHIN INSTRUMENT AND ACKNOWLEDGED TO ME THAT HE EXECUTED THE SAME  
IN HIS AUTHORIZED CAPACITY, AND THAT BY HIS SIGNATURE ON THE INSTRUMENT THE PERSON,  
OR THE ENTITY UPON BEHALF OF WHICH THE PERSON ACTED, EXECUTED THE INSTRUMENT.

WITNESS MY HAND: Patt B. Concannon  
NOTARY PUBLIC IN AND FOR SAID STATE  
PATT B. CONCANNON Commission 1110073  
(NAME)

MY PRINCIPAL PLACE OF BUSINESS IS IN ORANGE COUNTY.  
MY COMMISSION EXPIRES 29 AUGUST 2000

HAWTHORNE SAVINGS, F.S.B., AS BENEFICIARY, UNDER DEED OF TRUST RECORDED JULY 11, 1997,  
AS INSTRUMENT NO. 19970328514, OF OFFICIAL RECORDS.

By: Paula Hulet  
PAULA HULET, VICE PRESIDENT

STATE OF CALIFORNIA )  
COUNTY OF ORANGE ) SS.

ON Sept 5, 1997, BEFORE ME, Celeste Littleton, Notary Public  
PERSONALLY APPEARED Paula Hulet, PERSONALLY KNOWN TO ME,  
OR PROVED TO ME ON THE BASIS OF SATISFACTORY EVIDENCE, TO BE THE PERSON(S) WHOSE NAME(S)  
IS/ARE SUBSCRIBED TO THE WITHIN INSTRUMENT AND ACKNOWLEDGED TO ME THAT HE/THEY EXECUTED  
THE SAME IN HIS/their AUTHORIZED CAPACITY(S), AND THAT BY HIS/their SIGNATURE ON THE  
INSTRUMENT THE PERSON(S) OR THE ENTITY UPON BEHALF OF WHICH THE PERSON(S) ACTED,  
EXECUTED THE INSTRUMENT.

WITNESS MY HAND: Celeste Littleton  
NOTARY PUBLIC IN AND FOR SAID STATE  
Celeste Littleton Comm 1035974  
(NAME)

MY PRINCIPAL PLACE OF BUSINESS IS IN Orange COUNTY.  
MY COMMISSION EXPIRES Aug. 14, 1998

SILVEROAK DEVELOPMENT CORPORATION, A CALIFORNIA CORPORATION AS BENEFICIARY,  
UNDER DEED OF TRUST RECORDED JUNE 30, 1997, AS INSTRUMENT NO. 19970328515,  
OF OFFICIAL RECORDS.

By: Mark L. Frazier  
MARK L. FRAZIER, PRESIDENT

STATE OF CALIFORNIA )  
COUNTY OF ORANGE ) SS.

ON Aug. 14, 1997, BEFORE ME, Celeste Littleton, Notary Public  
PERSONALLY APPEARED Mark L. Frazier, PERSONALLY KNOWN TO ME,  
OR PROVED TO ME ON THE BASIS OF SATISFACTORY EVIDENCE, TO BE THE PERSON(S) WHOSE  
NAME(S) IS/ARE SUBSCRIBED TO THE WITHIN INSTRUMENT AND ACKNOWLEDGED TO ME THAT  
HE/THEY EXECUTED THE SAME IN IN HIS/their AUTHORIZED CAPACITY(S), AND THAT BY  
HIS/their SIGNATURE ON THE INSTRUMENT THE PERSON(S) OR THE ENTITY UPON BEHALF  
OF WHICH THE PERSON(S) ACTED, EXECUTED THE INSTRUMENT.

WITNESS MY HAND: Celeste Littleton  
NOTARY PUBLIC IN AND FOR SAID STATE  
Celeste Littleton Comm. # 1035974  
(NAME)

MY PRINCIPAL PLACE OF BUSINESS IS IN Orange COUNTY.  
MY COMMISSION EXPIRES August 14, 1998

COUNTY TREASURER-TAX COLLECTOR'S CERTIFICATE

STATE OF CALIFORNIA )  
COUNTY OF ORANGE ) SS.

I HEREBY CERTIFY THAT ACCORDING TO THE RECORDS OF MY OFFICE THERE ARE NO  
LIENS AGAINST THE LAND COVERED BY THIS MAP OR ANY PART THEREOF FOR  
UNPAID STATE, COUNTY, MUNICIPAL OR LOCAL TAXES OR SPECIAL ASSESSMENTS  
COLLECTED AS TAXES, EXCEPT TAXES OR SPECIAL ASSESSMENTS COLLECTED AS  
TAXES NOT YET PAYABLE.

AND DO ALSO CERTIFY TO THE RECORDS OF ORANGE COUNTY THAT THE PROVISIONS  
OF THE SUBDIVISION MAP ACT HAVE BEEN COMPLIED WITH REGARDING DEPOSITS TO  
SECURE THE PAYMENT OF TAXES OR SPECIAL ASSESSMENTS COLLECTED AS TAXES ON  
THE LAND COVERED BY THIS MAP.

DATED THIS 15 DAY OF October, 1997.  
John M. Moorlach  
JOHN M. MOORLACH BY  
COUNTY TREASURER-TAX COLLECTOR DEPUTY TREASURER-TAX COLLECTOR

SIGNATURE OMISSIONS

PURSUANT TO THE PROVISIONS OF SECTION 66436(a)(3) OF THE SUBDIVISION MAP  
ACT, THE FOLLOWING SIGNATURES HAVE BEEN OMITTED:

1. TRABUCO WATER COMPANY, HOLDER OF AN EASEMENTS RECORDED IN BOOK 47,  
PAGE 256, IN BOOK 515, PAGE 255, AND IN BOOK 5341, PAGE 280; ALL OF  
OFFICIAL RECORDS, AND IN BOOK 64, PAGE 202 OF DEEDS.
2. CITY OF SAN JUAN CAPISTRANO, HOLDER OF AN EASEMENT RECORDED IN BOOK  
8422, PAGE 973 OF OFFICIAL RECORDS.
3. COUNTY OF ORANGE, HOLDER OF AN EASEMENT RECORDED  
IN BOOK 6798, PAGE 230 OF OFFICIAL RECORDS.
4. SAN JUAN BASIN AUTHORITY, HOLDER OF EASEMENTS RECORDED IN BOOK 13365,  
PAGE 888 AND IN BOOK 13012, PAGE 879; BOTH OF OFFICIAL RECORDS.
5. CAPISTRANO WATER COMPANY, HOLDER OF EASEMENT RECORDED IN BOOK 71,  
PAGE 49 OF DEEDS.
6. ORANGE COUNTY FLOOD CONTROL DISTRICT,  
HOLDER OF EASEMENTS RECORDED IN  
BOOK 574, PAGE 358 AND IN BOOK 896,  
PAGE 454, BOTH OF OFFICIAL RECORDS.  
(CONTD. BELOW)

~~1. LLOYD SMITH AND WIFE, HOLDER OF EASEMENTS  
SET FORTH IN BOOK 110, PAGES 413 AND IN  
BOOK 226, PAGE 331 OF DEEDS.~~



SHEET 4 OF 9 SHEETS  
31 NUMBERED LOTS AND  
LOTS A THROUGH K, INCLUSIVE  
ACREAGE: 35.479 ACRES  
(ALL OF TENTATIVE  
TRACT No. 14379)

AMENDED MAP NO. 1 OF  
**TRACT NO. 14379**

IN THE CITY OF SAN JUAN CAPISTRANO,  
COUNTY OF ORANGE, STATE OF CALIFORNIA

BEING A SUBDIVISION OF A PORTION OF SECTION 1, T. 8 S., R. 8 W.,  
S.B.M., ALSO SHOWN ON R.S. NO. 92-1121, RECORDED IN BOOK 146 PAGES  
28 AND 29 OF RECORDS OF SURVEY, OF ORANGE COUNTY, CALIFORNIA



HUNSAKER AND ASSOCIATES IRVINE, INC.  
TOM R. McGANNON, R.C.E. 23956      DATE OF SURVEY: NOVEMBER, 1997

**OWNERSHIP CERTIFICATE:**

SAN JUAN ENCLAVE LLC, A CALIFORNIA LIMITED LIABILITY COMPANY; OWNER.

BY: WOODBRIDGE DEVELOPMENT, A CALIFORNIA GENERAL PARTNERSHIP, MEMBER.

BY: WOODBRIDGE DEVELOPMENT, INC., A CALIFORNIA CORPORATION, GENERAL PARTNER.

BY:  BY:   
NAME: TODD S. CUNNINGHAM NAME: MICHAEL W. KERR  
TITLE: PRESIDENT TITLE: VICE PRESIDENT / SECRETARY

BY: WOODBRIDGE COMMUNITIES LLC, A CALIFORNIA LIMITED LIABILITY  
COMPANY, GENERAL PARTNER.

BY:  BY:   
NAME: TODD S. CUNNINGHAM NAME: MICHAEL W. KERR  
TITLE: PRESIDENT TITLE: VICE PRESIDENT

BY: WOODBRIDGE DEVELOPMENT, INC., A CALIFORNIA CORPORATION, MEMBER.

BY:  BY:   
NAME: TODD S. CUNNINGHAM NAME: MICHAEL W. KERR  
TITLE: PRESIDENT TITLE: VICE PRESIDENT / SECRETARY

**NOTARY ACKNOWLEDGMENT:**

STATE OF CALIFORNIA)

) SS

COUNTY OF ORANGE )

ON THIS May 23, 1998, BEFORE ME, Celeste Littleton, Notary Public, PERSONALLY  
APPEARED Todd S. Cunningham AND Michael W. Kerr PERSONALLY  
KNOWN TO ME (OR PROVED TO ME ON THE BASIS OF SATISFACTORY EVIDENCE) TO BE THE PERSON(S)  
WHOSE NAME(S) IS/ARE SUBSCRIBED TO THE WITHIN INSTRUMENT AND ACKNOWLEDGED TO ME THAT  
HE/SHE/THEY EXECUTED THE SAME IN HIS/HER/THEIR AUTHORIZED CAPACITY(IES), AND THAT BY  
HIS/HER/THEIR SIGNATURE(S) ON THE INSTRUMENT THE PERSON(S), OR ENTITY UPON BEHALF OF  
WHICH THE PERSON(S) ACTED, EXECUTED THE INSTRUMENT.

WITNESS MY HAND:

SIGNATURE   
NOTARY PUBLIC IN AND FOR SAID STATE

MY PRINCIPAL PLACE OF BUSINESS IS  
IN Orange COUNTY.

Celeste Littleton  
(NAME PRINTED)

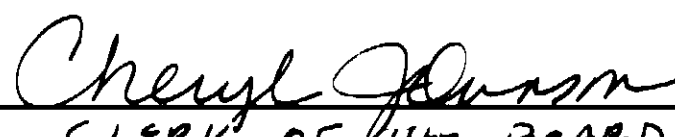
MY COMMISSION EXPIRES: Aug. 14, 1998  
Commission # 1035974

**CERTIFICATE OF ACCEPTANCE - CAPISTRANO VALLEY WATER DISTRICT**

I HEREBY STATE THAT THIS MAP WAS PRESENTED TO THE CITY COUNCIL ON BEHALF OF THE  
BOARD OF DIRECTORS OF THE CAPISTRANO VALLEY WATER DISTRICT FOR ACCEPTANCE OF THE  
WATER RIGHTS, AS OFFERED, AND THE NON-EXCLUSIVE EASEMENTS DEDICATED FOR ACCESS,  
INGRESS AND EGRESS AS OFFERED, OVER STREETS, AND AS CONDITIONALLY OFFERED, OVER  
"OFFER E" AND "OFFER E" AT A REGULAR MEETING THEREOF HELD ON THE 7th DAY OF  
July, 1998.

WE ALSO HEREBY ABANDON, PURSUANT TO SECTION 66499.20 1/2 OF THE SUBDIVISION MAP  
ACT, THE EASEMENTS AND APPURTENANCES, WITHIN THE BOUNDARY OF THIS MAP WHICH  
WERE ACQUIRED BY THE CAPISTRANO VALLEY WATER DISTRICT, PER THE MAP OF TRACT NO.  
14379, RECORDED IN BOOK 759, PAGES 14 THROUGH 20, INCLUSIVE, OF MISCELLANEOUS  
MAPS, IN THE OFFICE OF THE COUNTY RECORDER OF ORANGE COUNTY, CALIFORNIA, NOT  
SHOWN ON THIS MAP.

AND THAT THEREUPON SAID BOARD DID, BY AN ORDER DULY PASSED AND ENTERED, ACCEPT  
THE WATER RIGHTS, THE EASEMENTS AND APPURTENANCES, AS OFFERED.

  
CLERK OF THE BOARD

**NOTARY ACKNOWLEDGMENT:**

STATE OF CALIFORNIA)

) SS

COUNTY OF ORANGE )

ON THIS \_\_\_\_\_, BEFORE ME, \_\_\_\_\_, PERSONALLY  
APPEARED \_\_\_\_\_ AND \_\_\_\_\_ PERSONALLY  
KNOWN TO ME (OR PROVED TO ME ON THE BASIS OF SATISFACTORY EVIDENCE) TO BE THE PERSON(S)  
WHOSE NAME(S) IS/ARE SUBSCRIBED TO THE WITHIN INSTRUMENT AND ACKNOWLEDGED TO ME THAT  
HE/SHE/THEY EXECUTED THE SAME IN HIS/HER/THEIR AUTHORIZED CAPACITY(IES), AND THAT BY  
HIS/HER/THEIR SIGNATURE(S) ON THE INSTRUMENT THE PERSON(S), OR ENTITY UPON BEHALF OF  
WHICH THE PERSON(S) ACTED, EXECUTED THE INSTRUMENT.

WITNESS MY HAND:

SIGNATURE \_\_\_\_\_  
NOTARY PUBLIC IN AND FOR SAID STATE

MY PRINCIPAL PLACE OF BUSINESS IS  
IN \_\_\_\_\_ COUNTY.

\_\_\_\_\_  
(NAME PRINTED)

MY COMMISSION EXPIRES: \_\_\_\_\_

774

43

SHEET 5 OF 9 SHEETS  
31 NUMBERED LOTS AND  
LOTS A THROUGH K, INCLUSIVE  
ACREAGE: 36.479 ACRES  
(ALL OF TENTATIVE  
TRACT No. 14379)

AMENDED MAP NO. 1 OF  
**TRACT NO. 14379**

IN THE CITY OF SAN JUAN CAPISTRANO,  
COUNTY OF ORANGE, STATE OF CALIFORNIA

BEING A SUBDIVISION OF A PORTION OF SECTION 1, T. 8 S., R. 8 W,  
S.B.M., ALSO SHOWN ON R.S. NO. 92-1121, RECORDED IN BOOK 146 PAGES  
28 AND 29 OF RECORDS OF SURVEY, OF ORANGE COUNTY, CALIFORNIA.

HUNSAKER AND ASSOCIATES IRVINE, INC.  
TOM R. MCGANNON, R.C.E. 23956      DATE OF SURVEY: NOVEMBER, 1997

**BENEFICIARIES CERTIFICATE:**

HAWTHORNE SAVINGS, F.S.B., BENEFICIARY UNDER A DEED OF TRUST RECORDED AS INST.  
NO. 19970328514 OF OFFICIAL RECORDS.

BY: *Perry L. Skoll*      BY: \_\_\_\_\_  
NAME: Perry L. Skoll      NAME: \_\_\_\_\_  
TITLE: Vice President      TITLE: \_\_\_\_\_

WITTENBERG-LIVINGSTON, INC., A CALIFORNIA CORPORATION, BENEFICIARY UNDER A DEED  
OF TRUST RECORDED AS INST. NO. 19960523894 OF OFFICIAL RECORDS.

BY: *Eric A. Wittenberg*      BY: \_\_\_\_\_  
NAME: Eric A. Wittenberg      NAME: \_\_\_\_\_  
TITLE: PRESIDENT      TITLE: \_\_\_\_\_

SILVEROAK DEVELOPMENT CORPORATION, A CALIFORNIA CORPORATION, BENEFICIARY UNDER  
A DEED OF TRUST RECORDED AS INST. NO. 19970328515 OF OFFICIAL RECORDS.

BY: *Mark L. Frazier*      BY: \_\_\_\_\_  
NAME: MARK L. FRAZIER      NAME: \_\_\_\_\_  
TITLE: PRESIDENT      TITLE: \_\_\_\_\_

**NOTARY ACKNOWLEDGMENTS:**

STATE OF CALIFORNIA)

) SS

COUNTY OF ORANGE )

ON THIS May 4, 1998, BEFORE ME, Zackary G. Puetz, Notary Public, PERSONALLY  
APPEARED Perry L. Skoll AND \_\_\_\_\_ PERSONALLY

~~KNOWN TO ME (OR PROVED TO ME ON THE BASIS OF SATISFACTORY EVIDENCE) TO BE THE PERSON(S)~~  
WHOSE NAME(S) IS/ARE SUBSCRIBED TO THE WITHIN INSTRUMENT AND ACKNOWLEDGED TO ME THAT  
~~HE/SHE/THEY~~ EXECUTED THE SAME IN HIS/HER/THEIR AUTHORIZED CAPACITY(IES), AND THAT BY  
~~HIS/HER/THEIR~~ SIGNATURE(S) ON THE INSTRUMENT THE PERSON(S), OR ENTITY UPON BEHALF OF  
WHICH THE PERSON(S) ACTED, EXECUTED THE INSTRUMENT.

WITNESS MY HAND:

SIGNATURE *Zackary G. Puetz*  
NOTARY PUBLIC IN AND FOR SAID STATE  
Zackary G. Puetz  
(NAME PRINTED)

MY PRINCIPAL PLACE OF BUSINESS IS  
IN orange COUNTY.  
MY COMMISSION EXPIRES: 12/15/2000

STATE OF CALIFORNIA)

) SS

COUNTY OF ORANGE )

ON THIS May 7, 1998, BEFORE ME, Celeste Littleton, Notary Public, PERSONALLY  
APPEARED Eric A. Wittenberg AND \_\_\_\_\_ PERSONALLY

~~KNOWN TO ME (OR PROVED TO ME ON THE BASIS OF SATISFACTORY EVIDENCE) TO BE THE PERSON(S)~~  
WHOSE NAME(S) IS/ARE SUBSCRIBED TO THE WITHIN INSTRUMENT AND ACKNOWLEDGED TO ME THAT  
~~HE/SHE/THEY~~ EXECUTED THE SAME IN HIS/HER/THEIR AUTHORIZED CAPACITY(IES), AND THAT BY  
~~HIS/HER/THEIR~~ SIGNATURE(S) ON THE INSTRUMENT THE PERSON(S), OR ENTITY UPON BEHALF OF  
WHICH THE PERSON(S) ACTED, EXECUTED THE INSTRUMENT.

WITNESS MY HAND:

SIGNATURE *Celeste Littleton*  
NOTARY PUBLIC IN AND FOR SAID STATE  
Celeste Littleton  
(NAME PRINTED)

MY PRINCIPAL PLACE OF BUSINESS IS  
IN orange COUNTY.  
MY COMMISSION EXPIRES: 8/14/98

STATE OF CALIFORNIA)

) SS

COUNTY OF ORANGE )

ON THIS May 7, 1998, BEFORE ME, Celeste Littleton, Notary Public, PERSONALLY  
APPEARED Mark L. Frazier AND \_\_\_\_\_ PERSONALLY

~~KNOWN TO ME (OR PROVED TO ME ON THE BASIS OF SATISFACTORY EVIDENCE) TO BE THE PERSON(S)~~  
WHOSE NAME(S) IS/ARE SUBSCRIBED TO THE WITHIN INSTRUMENT AND ACKNOWLEDGED TO ME THAT  
~~HE/SHE/THEY~~ EXECUTED THE SAME IN HIS/HER/THEIR AUTHORIZED CAPACITY(IES), AND THAT BY  
~~HIS/HER/THEIR~~ SIGNATURE(S) ON THE INSTRUMENT THE PERSON(S), OR ENTITY UPON BEHALF OF  
WHICH THE PERSON(S) ACTED, EXECUTED THE INSTRUMENT.

WITNESS MY HAND:

SIGNATURE *Celeste Littleton*  
NOTARY PUBLIC IN AND FOR SAID STATE  
Celeste Littleton  
(NAME PRINTED)

MY PRINCIPAL PLACE OF BUSINESS IS  
IN Orange COUNTY.  
MY COMMISSION EXPIRES: 8/14/98



SHEET 6 OF 9 SHEETS  
SCALE: 1" = 200'  
31 NUMBERED LOTS AND LOTS  
A THROUGH K, INCLUSIVE  
ACREAGE: 35.479 ACRES  
(ALL OF TENTATIVE  
TRACT NO. 14379)

AMENDED MAP NO. 1 OF  
**TRACT NO. 14379**

IN THE CITY OF SAN JUAN CAPISTRANO,  
COUNTY OF ORANGE, STATE OF CALIFORNIA.

HUNSAKER AND ASSOCIATES IRVINE, INC.

TOM R. McGANNON, R.C.E. 23956

DATE OF SURVEY: NOVEMBER, 1997



**DATUM STATEMENT:**

COORDINATES SHOWN ARE BASED ON THE CALIFORNIA COORDINATE SYSTEM (CCS83),  
ZONE VI, 1983 NAD, (1991.35 EPOCH OCS GPS ADJUSTMENT).

ALL DISTANCES SHOWN ARE GROUND UNLESS OTHERWISE NOTED. TO OBTAIN GRID  
DISTANCE MULTIPLY GROUND DISTANCE BY 0.99995652.

**BASIS OF BEARINGS:**

THE BEARINGS SHOWN HEREON ARE BASED ON THE BEARING BETWEEN O.C.S. HORIZONTAL  
CONTROL STATION GPS NO. 7542 AND STATION GPS NO. 7552 BEING N65°10'42"E PER  
RECORDS ON FILE IN THE OFFICE OF THE ORANGE COUNTY SURVEYOR.

SEE SHEET 7 FOR EASEMENT NOTES.

**MONUMENT NOTES:**

2" I.P. TAGGED R.C.E. 23956 OR LEAD, TACK & TAG R.C.E. 23956 OR NAIL & TAG R.C.E. 23956  
OR 8" S&W STAMPED R.C.E. 23956 OR TAG R.C.E. 23956 SECURED WITH EPOXY TO BE SET AT  
ALL TRACT BOUNDARY CORNERS WITHIN 90 DAYS AFTER ACCEPTANCE OF IMPROVEMENTS, UNLESS  
OTHERWISE NOTED.

1" I.P. TAGGED R.C.E. 23956 OR LEAD, TACK & TAG R.C.E. 23956 OR NAIL & TAG R.C.E. 23956  
OR 8" S&W STAMPED R.C.E. 23956 OR TAG R.C.E. 23956 SECURED WITH EPOXY TO BE SET AT  
ALL LOT CORNERS EXCEPT LOT CORNERS THAT ARE THE INTERSECTION OF SIDE LOT LINES WITH  
STREET RIGHT OF WAY, WITHIN 90 DAYS AFTER ACCEPTANCE OF IMPROVEMENTS, UNLESS  
OTHERWISE NOTED.

LEAD, TACK & TAG R.C.E. 23956 TO BE SET IN TOP OF CURB ON ALL SIDE LOT LINES PRODUCED  
OR CONTINUED, 4.60 FEET FROM INTERSECTION WITH STREET RIGHT OF WAY FOR ALL SIDE LOT  
LINES RADIAL OR PERPENDICULAR TO STREET RIGHT OF WAY, WITHIN 90 DAYS AFTER ACCEPTANCE  
OF IMPROVEMENTS, UNLESS OTHERWISE NOTED. FOR ALL SIDE LOT LINES NON-RADIAL OR  
NON-PERPENDICULAR TO STREET RIGHT OF WAY, BEARING AND DISTANCE OF PRODUCTION IS AS  
NOTED HEREON.

8" S&W STAMPED R.C.E. 23956 OR LEAD, TACK & TAG R.C.E. 23956 OR 1" I.P. TAGGED R.C.E.  
23956 IN MEDIAN TO BE SET AT ALL STREET CENTERLINE POINTS OF CONTROL, WITHIN 90 DAYS  
AFTER ACCEPTANCE OF IMPROVEMENTS, UNLESS OTHERWISE NOTED.

NO MONUMENTS WILL BE SET AT PRIVATE STREET LETTERED LOT CORNERS EXCEPT WHERE SAID  
CORNERS ARE COMMON WITH NUMBERED LOT CORNERS OR TRACT BOUNDARY CORNERS, UNLESS  
OTHERWISE NOTED.

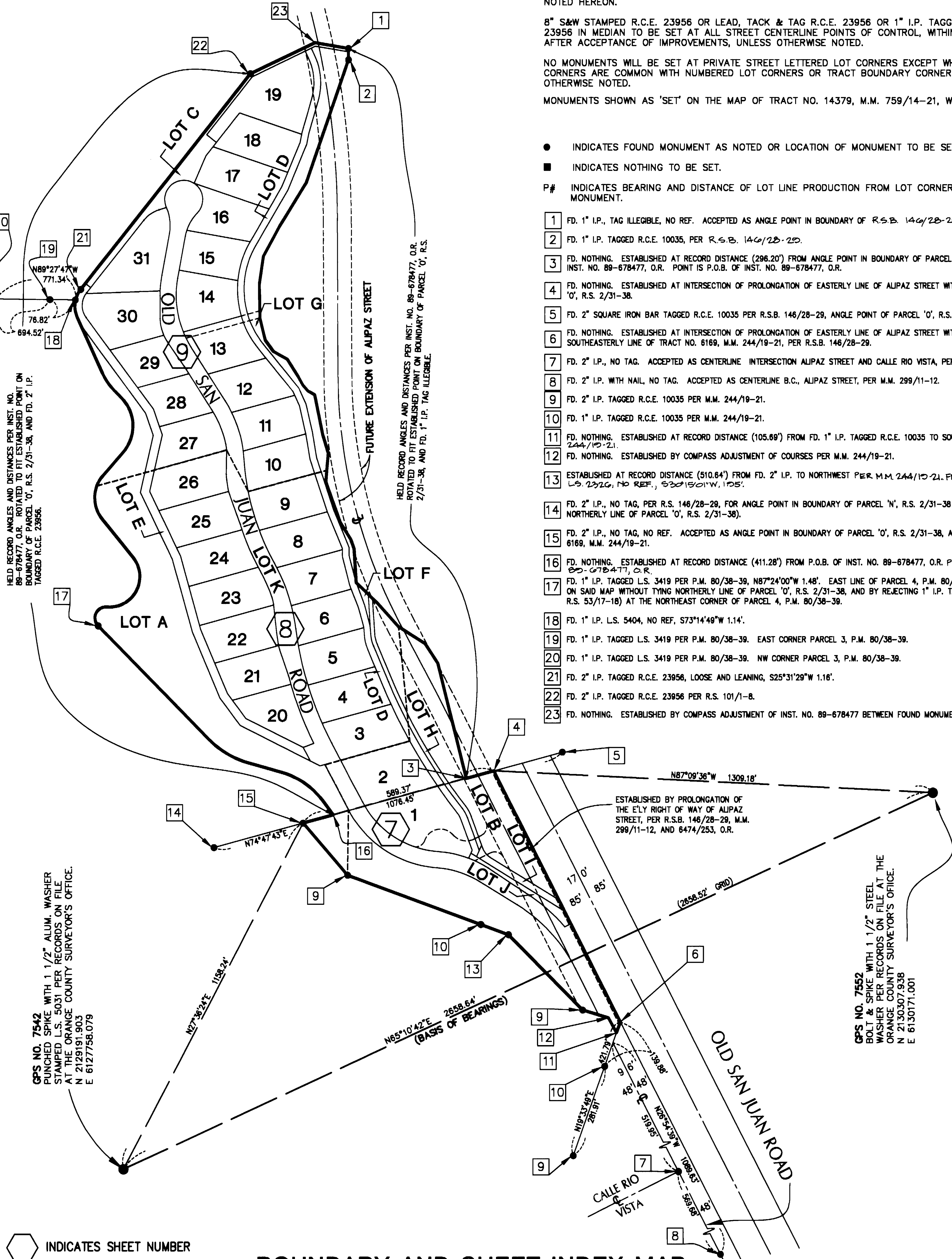
MONUMENTS SHOWN AS 'SET' ON THE MAP OF TRACT NO. 14379, M.M. 759/14-21, WERE NOT FOUND.

● INDICATES FOUND MONUMENT AS NOTED OR LOCATION OF MONUMENT TO BE SET AS NOTED.

■ INDICATES NOTHING TO BE SET.

P# INDICATES BEARING AND DISTANCE OF LOT LINE PRODUCTION FROM LOT CORNER TO  
MONUMENT.

- 1 FD. 1" I.P., TAG ILLEGIBLE, NO REF. ACCEPTED AS ANGLE POINT IN BOUNDARY OF R.S.B. 146/28-29.
- 2 FD. 1" I.P. TAGGED R.C.E. 10035, PER R.S.B. 146/28-29.
- 3 FD. NOTHING. ESTABLISHED AT RECORD DISTANCE (296.20') FROM ANGLE POINT IN BOUNDARY OF PARCEL 'O', R.S. 2/31-38, PER INST. NO. 89-678477, O.R. POINT IS P.O.B. OF INST. NO. 89-678477, O.R.
- 4 FD. NOTHING. ESTABLISHED AT INTERSECTION OF PROLONGATION OF EASTERLY LINE OF ALPAZ STREET WITH BOUNDARY OF PARCEL 'O', R.S. 2/31-38.
- 5 FD. 2" SQUARE IRON BAR TAGGED R.C.E. 10035 PER R.S.B. 146/28-29, ANGLE POINT OF PARCEL 'O', R.S. 2/31-38.
- 6 FD. NOTHING. ESTABLISHED AT INTERSECTION OF PROLONGATION OF EASTERLY LINE OF ALPAZ STREET WITH PROLONGATION OF SOUTHEASTERLY LINE OF TRACT NO. 6169, M.M. 244/19-21, PER R.S.B. 146/28-29.
- 7 FD. 2" I.P., NO TAG. ACCEPTED AS CENTERLINE INTERSECTION ALPAZ STREET AND CALLE RIO VISTA, PER M.M. 299/11-12.
- 8 FD. 2" I.P. WITH NAIL, NO TAG. ACCEPTED AS CENTERLINE B.C., ALPAZ STREET, PER M.M. 299/11-12.
- 9 FD. 2" I.P. TAGGED R.C.E. 10035 PER M.M. 244/19-21.
- 10 FD. 1" I.P. TAGGED R.C.E. 10035 PER M.M. 244/19-21.
- 11 FD. NOTHING. ESTABLISHED AT RECORD DISTANCE (105.69') FROM FD. 1" I.P. TAGGED R.C.E. 10035 TO SOUTHWEST PER M.M. 244/19-21.
- 12 FD. NOTHING. ESTABLISHED BY COMPASS ADJUSTMENT OF COURSES PER M.M. 244/19-21.
- 13 ESTABLISHED AT RECORD DISTANCE (510.64') FROM FD. 2" I.P. TO NORTHWEST PER M.M. 244/19-21. FD. 3/4" I.P. TAGGED L.S. 2312, NO REF., S20°15'01"W, 1.05'.
- 14 FD. 2" I.P., NO TAG, PER R.S. 146/28-29, FOR ANGLE POINT IN BOUNDARY OF PARCEL 'N', R.S. 2/31-38 (EXTENSION OF NORTHERLY LINE OF PARCEL 'O', R.S. 2/31-38).
- 15 FD. 2" I.P., NO TAG, NO REF. ACCEPTED AS ANGLE POINT IN BOUNDARY OF PARCEL 'O', R.S. 2/31-38, AS SET BY TRACT NO. 6169, M.M. 244/19-21.
- 16 FD. NOTHING. ESTABLISHED AT RECORD DISTANCE (411.28') FROM P.O.B. OF INST. NO. 89-678477, O.R. PER INST. NO. 89-678477, O.R.
- 17 FD. 1" I.P. TAGGED L.S. 3419 PER P.M. 80/38-39, N87°24'00"W 1.48'. EAST LINE OF PARCEL 4, P.M. 80/38-39, WAS ESTABLISHED ON SAID MAP WITHOUT TYING NORTHERLY LINE OF PARCEL 'O', R.S. 2/31-38, AND BY REJECTING 1" I.P. TAGGED L.S. 2383 (SET BY R.S. 53/17-18) AT THE NORTHEAST CORNER OF PARCEL 4, P.M. 80/38-39.
- 18 FD. 1" I.P. L.S. 5404, NO REF., S73°14'49"W 1.14'.
- 19 FD. 1" I.P. TAGGED L.S. 3419 PER P.M. 80/38-39. EAST CORNER PARCEL 3, P.M. 80/38-39.
- 20 FD. 1" I.P. TAGGED L.S. 3419 PER P.M. 80/38-39. NW CORNER PARCEL 3, P.M. 80/38-39.
- 21 FD. 2" I.P. TAGGED R.C.E. 23956, LOOSE AND LEANING, S25°31'29"W 1.16'.
- 22 FD. 2" I.P. TAGGED R.C.E. 23956 PER R.S. 101/1-8.
- 23 FD. NOTHING. ESTABLISHED BY COMPASS ADJUSTMENT OF INST. NO. 89-678477 BETWEEN FOUND MONUMENTS.



● INDICATES SHEET NUMBER

**BOUNDARY AND SHEET INDEX MAP**



SHEET 7 OF 9 SHEETS  
SCALE: 1" = 60'  
31 NUMBERED LOTS AND LOTS  
A THROUGH K, INCLUSIVE  
ACREAGE: 35.479 ACRES  
(ALL OF TENTATIVE  
TRACT NO. 14379)

AMENDED MAP NO. 1 OF  
**TRACT NO. 14379**

IN THE CITY OF SAN JUAN CAPISTRANO,  
COUNTY OF ORANGE, STATE OF CALIFORNIA

HUNSAKER AND ASSOCIATES IRVINE, INC.

TOM R. McGANNON, R.C.E. 23956

DATE OF SURVEY: NOVEMBER, 1997

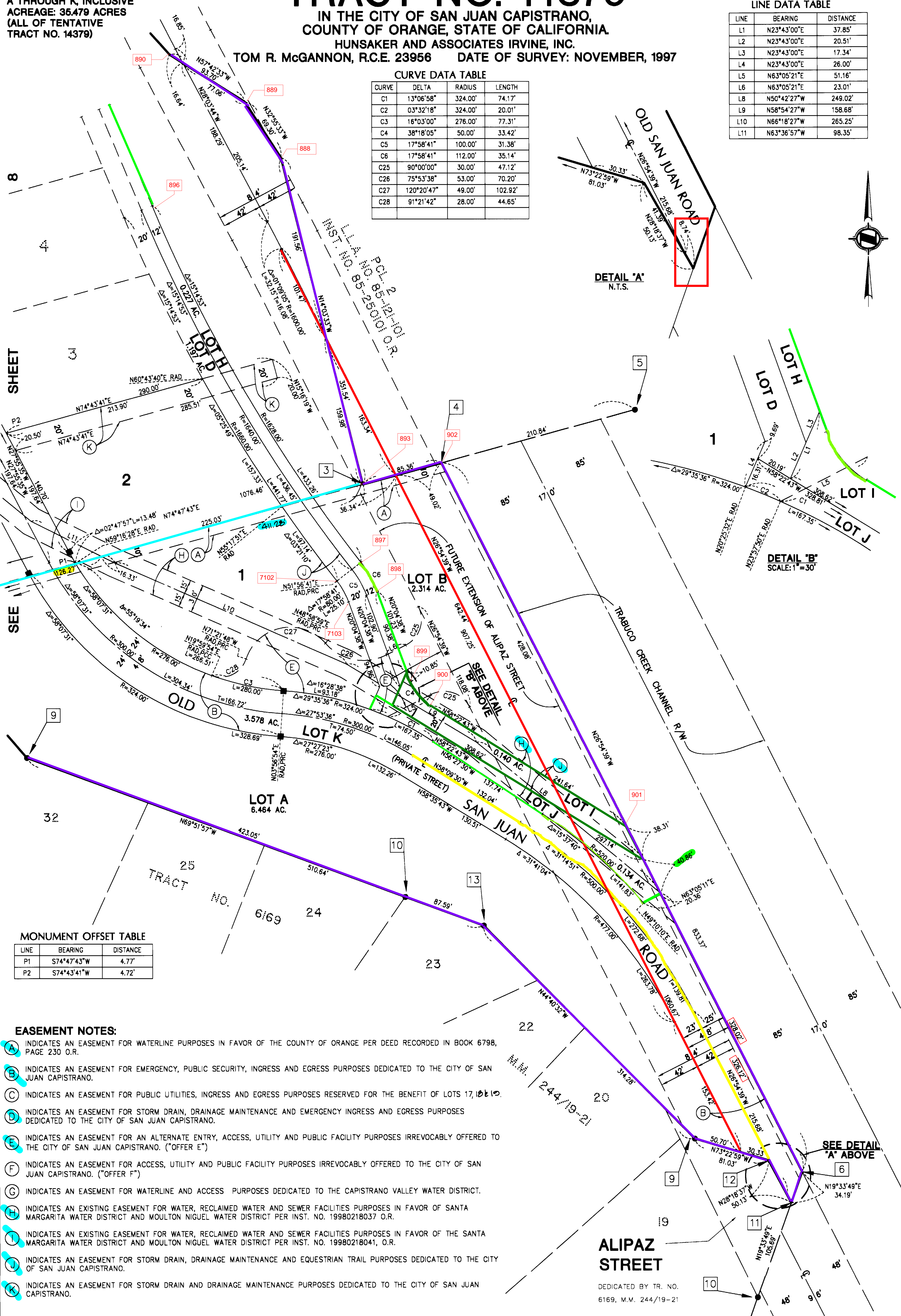
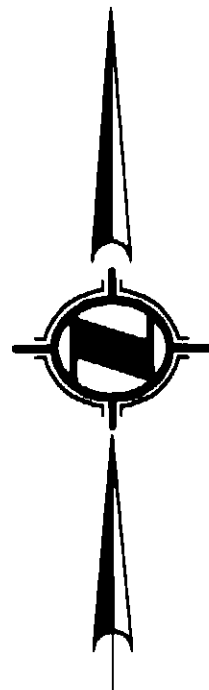
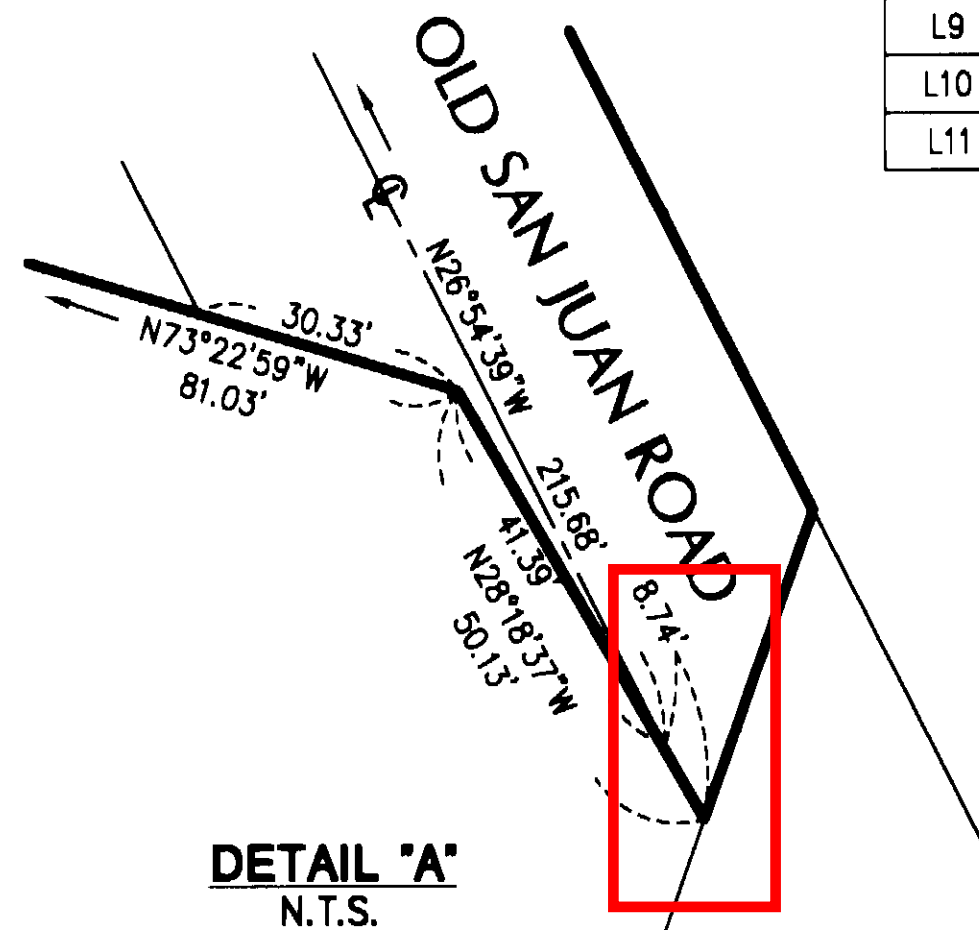
SEE SHEET 6 FOR BOUNDARY AND SHEET  
INDEX MAP, BASIS OF BEARINGS, DATUM  
STATEMENT AND MONUMENT NOTES.

LINE DATA TABLE

LINE	BEARING	DISTANCE
L1	N23°43'00"E	37.85'
L2	N23°43'00"E	20.51'
L3	N23°43'00"E	17.34'
L4	N23°43'00"E	26.00'
L5	N63°05'21"E	51.16'
L6	N63°05'21"E	23.01'
L8	N50°42'27"W	249.02'
L9	N58°54'27"W	158.68'
L10	N66°18'27"W	265.25'
L11	N63°36'57"W	98.35'

CURVE DATA TABLE

CURVE	DELTA	RADIUS	LENGTH
C1	13°06'58"	324.00'	74.17'
C2	03°32'18"	324.00'	20.01'
C3	16°03'00"	276.00'	77.31'
C4	38°18'05"	50.00'	33.42'
C5	17°58'41"	100.00'	31.38'
C6	17°58'41"	112.00'	35.14'
C25	90°00'00"	30.00'	47.12'
C26	75°53'38"	53.00'	70.20'
C27	120°20'47"	49.00'	102.92'
C28	91°21'42"	28.00'	44.65'



MONUMENT OFFSET TABLE

LINE	BEARING	DISTANCE
P1	S74°47'43"W	4.77'
P2	S74°43'41"W	4.72'

EASEMENT NOTES:

- (A) INDICATES AN EASEMENT FOR WATERLINE PURPOSES IN FAVOR OF THE COUNTY OF ORANGE PER DEED RECORDED IN BOOK 6798, PAGE 230 O.R.
- (B) INDICATES AN EASEMENT FOR EMERGENCY, PUBLIC SECURITY, INGRESS AND EGRESS PURPOSES DEDICATED TO THE CITY OF SAN JUAN CAPISTRANO.
- (C) INDICATES AN EASEMENT FOR PUBLIC UTILITIES, INGRESS AND EGRESS PURPOSES RESERVED FOR THE BENEFIT OF LOTS 17, 18 & 19.
- (D) INDICATES AN EASEMENT FOR STORM DRAIN, DRAINAGE MAINTENANCE AND EMERGENCY INGRESS AND EGRESS PURPOSES DEDICATED TO THE CITY OF SAN JUAN CAPISTRANO.
- (E) INDICATES AN EASEMENT FOR AN ALTERNATE ENTRY, ACCESS, UTILITY AND PUBLIC FACILITY PURPOSES IRREVOCABLY OFFERED TO THE CITY OF SAN JUAN CAPISTRANO. ("OFFER E")
- (F) INDICATES AN EASEMENT FOR ACCESS, UTILITY AND PUBLIC FACILITY PURPOSES IRREVOCABLY OFFERED TO THE CITY OF SAN JUAN CAPISTRANO. ("OFFER F")
- (G) INDICATES AN EASEMENT FOR WATERLINE AND ACCESS PURPOSES DEDICATED TO THE CAPISTRANO VALLEY WATER DISTRICT.
- (H) INDICATES AN EXISTING EASEMENT FOR WATER, RECLAIMED WATER AND SEWER FACILITIES PURPOSES IN FAVOR OF SANTA MARGARITA WATER DISTRICT AND MOULTON NIGUEL WATER DISTRICT PER INST. NO. 19980218037 O.R.
- (I) INDICATES AN EXISTING EASEMENT FOR WATER, RECLAIMED WATER AND SEWER FACILITIES PURPOSES IN FAVOR OF THE SANTA MARGARITA WATER DISTRICT AND MOULTON NIGUEL WATER DISTRICT PER INST. NO. 19980218041 O.R.
- (J) INDICATES AN EASEMENT FOR STORM DRAIN, DRAINAGE MAINTENANCE AND EQUESTRIAN TRAIL PURPOSES DEDICATED TO THE CITY OF SAN JUAN CAPISTRANO.
- (K) INDICATES AN EASEMENT FOR STORM DRAIN AND DRAINAGE MAINTENANCE PURPOSES DEDICATED TO THE CITY OF SAN JUAN CAPISTRANO.

ALIPAZ STREET

DEDICATED BY TR. NO.  
6169, M.M. 244/19-21

774  
96



SHEET 8 OF 9 SHEETS  
SCALE: 1" = 60'  
31 NUMBERED LOTS AND LOTS  
A THROUGH K, INCLUSIVE  
ACREAGE: 35.479 ACRES  
(ALL OF TENTATIVE  
TRACT NO. 14379)

AMENDED MAP NO. 1 OF  
**TRACT NO. 14379**

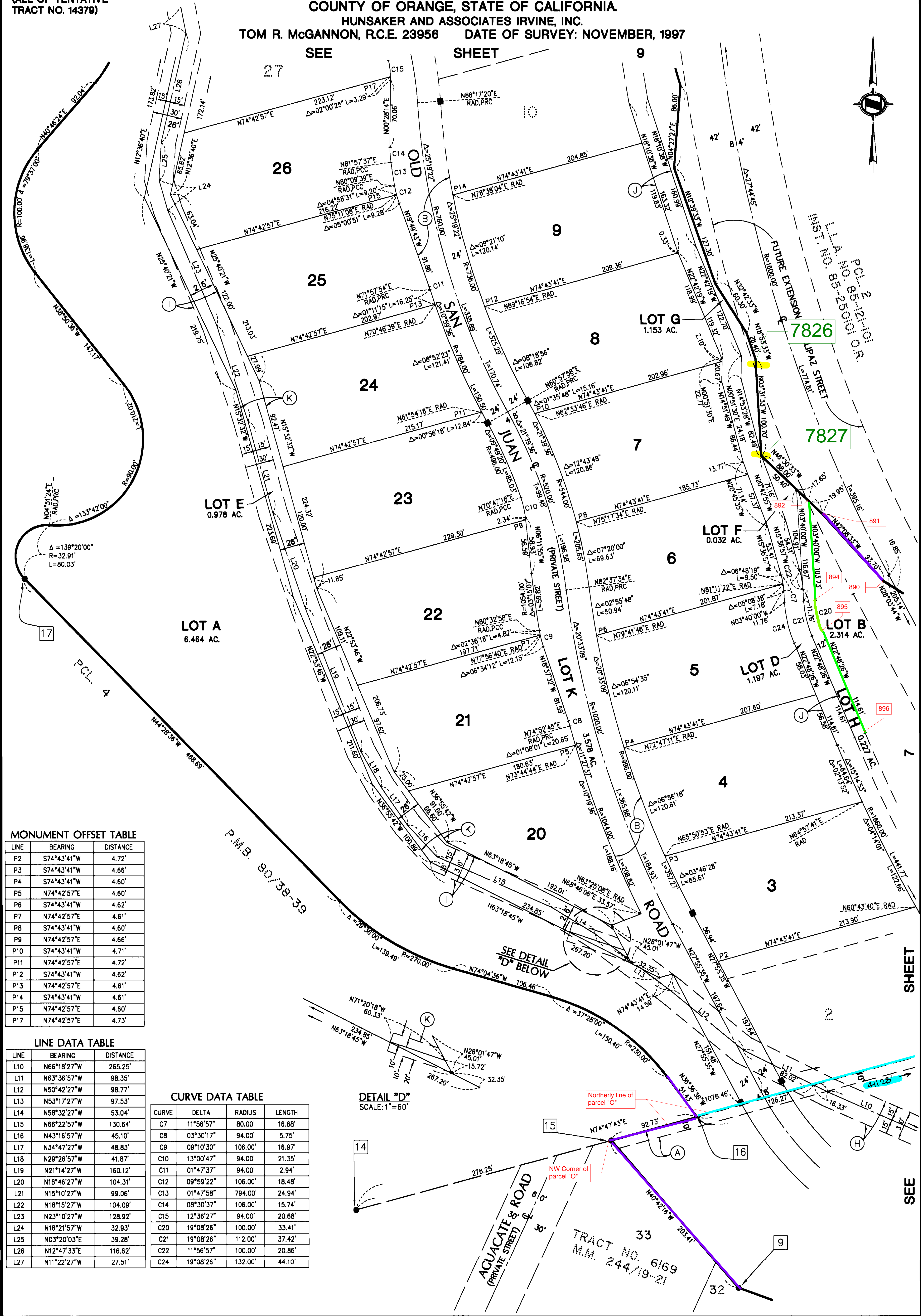
IN THE CITY OF SAN JUAN CAPISTRANO,  
COUNTY OF ORANGE, STATE OF CALIFORNIA.

HUNSAKER AND ASSOCIATES IRVINE, INC.

TOM R. McGANNON, R.C.E. 23956

DATE OF SURVEY: NOVEMBER, 1997

SEE SHEET 6 FOR BOUNDARY AND SHEET  
INDEX MAP, BASIS OF BEARINGS, DATUM  
STATEMENT, MONUMENT NOTES.  
SEE SHEET 7 FOR EASEMENT NOTES.



MONUMENT OFFSET TABLE

LINE	BEARING	DISTANCE
P2	S74°43'41"W	4.72'
P3	S74°43'41"W	4.66'
P4	S74°43'41"W	4.60'
P5	N74°42'57"E	4.60'
P6	S74°43'41"W	4.62'
P7	N74°42'57"E	4.61'
P8	S74°43'41"W	4.60'
P9	N74°42'57"E	4.66'
P10	S74°43'41"W	4.71'
P11	N74°42'57"E	4.72'
P12	S74°43'41"W	4.62'
P13	N74°42'57"E	4.61'
P14	S74°43'41"W	4.61'
P15	N74°42'57"E	4.60'
P17	N74°42'57"E	4.73'

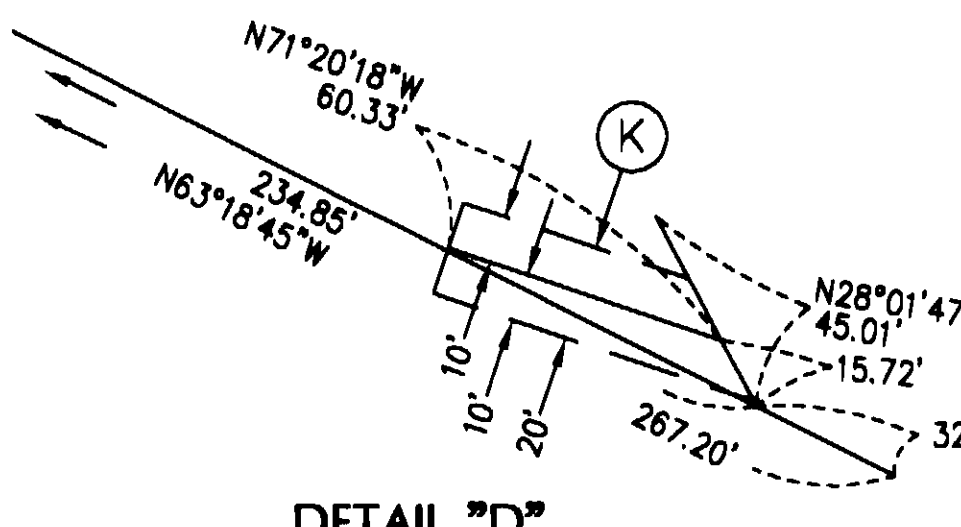
LINE DATA TABLE

LINE	BEARING	DISTANCE
L10	N66°18'27"W	265.25'
L11	N63°36'57"W	98.35'
L12	N50°42'27"W	98.77'
L13	N53°17'27"W	97.53'
L14	N58°32'27"W	53.04'
L15	N66°22'57"W	130.64'
L16	N43°16'57"W	45.10'
L17	N34°47'27"W	48.83'
L18	N29°26'57"W	41.87'
L19	N21°14'27"W	160.12'
L20	N18°46'27"W	104.31'
L21	N15°10'27"W	99.06'
L22	N18°15'27"W	104.09'
L23	N23°10'27"W	128.92'
L24	N16°21'57"W	32.93'
L25	N03°20'03"E	39.28'
L26	N12°47'33"E	116.62'
L27	N11°22'27"W	27.51'

CURVE DATA TABLE

CURVE	DELTA	RADIUS	LENGTH
C7	11°56'57"	80.00'	16.68'
C8	03°30'17"	94.00'	5.75'
C9	09°10'30"	106.00'	16.97'
C10	13°00'47"	94.00'	21.35'
C11	01°47'37"	94.00'	2.94'
C12	09°59'22"	106.00'	18.48'
C13	01°47'58"	794.00'	24.94'
C14	08°30'37"	106.00'	15.74'
C15	12°36'27"	94.00'	20.68'
C20	19°08'26"	100.00'	33.41'
C21	19°08'26"	112.00'	37.42'
C22	11°56'57"	100.00'	20.86'
C24	19°08'26"	132.00'	44.10'

DETAIL "D"  
SCALE: 1" = 60'



SEE SHEET 7

SEE SHEET 6

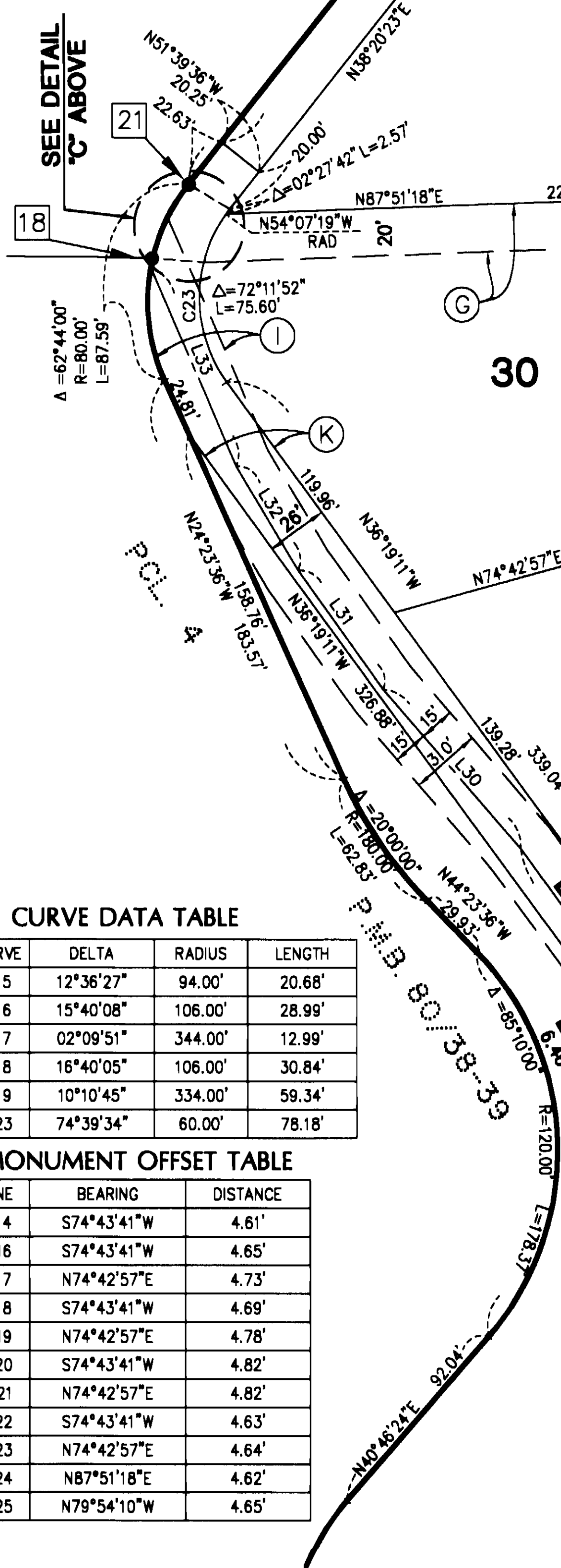
SEE SHEET 5



AMENDED MAP NO. 1 OF  
**TRACT NO. 14379**  
IN THE CITY OF SAN JUAN CAPISTRANO,  
COUNTY OF ORANGE, STATE OF CALIFORNIA.  
HUNSAKER AND ASSOCIATES IRVINE, INC.  
TOM R. McGANNON, R.C.E. 23956      DATE OF SURVEY: NOVEMBER, 1997

**SEE SHEET 6 FOR BOUNDARY AND SHEET  
INDEX MAP, BASIS OF BEARINGS, DATUM  
STATEMENT, MONUMENT NOTES.**

**SEE SHEET 7 FOR EASEMENT NOTES.**



<b>LINE</b>	<b>BEARING</b>	<b>DISTANCE</b>
P14	S74°43'41"W	4.61'
P16	S74°43'41"W	4.65'
P17	N74°42'57"E	4.73'
P18	S74°43'41"W	4.69'
P19	N74°42'57"E	4.78'
P20	S74°43'41"W	4.82'
P21	N74°42'57"E	4.82'
P22	S74°43'41"W	4.63'
P23	N74°42'57"E	4.64'
P24	N87°51'18"E	4.62'
P25	N79°54'10"W	4.65'

