

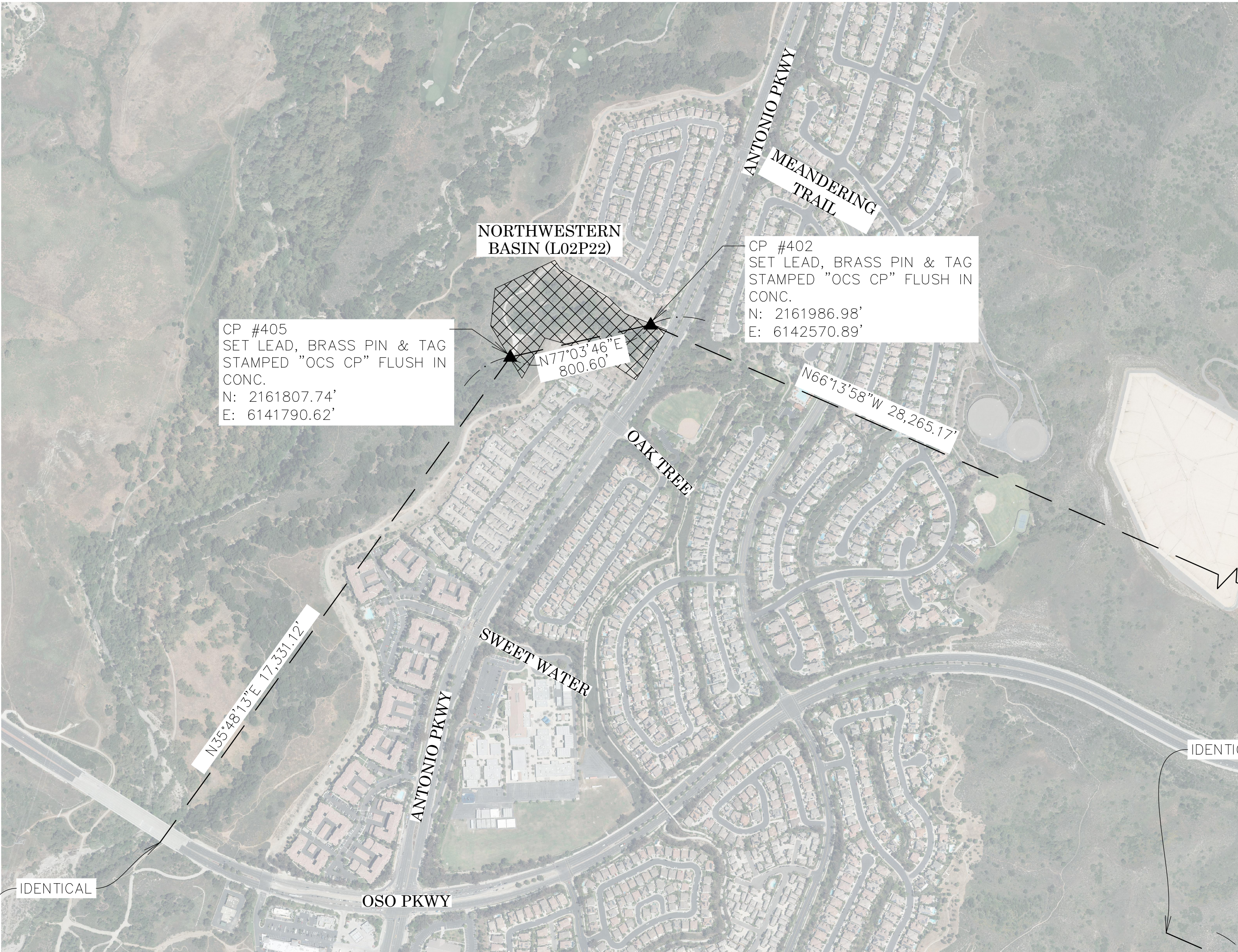
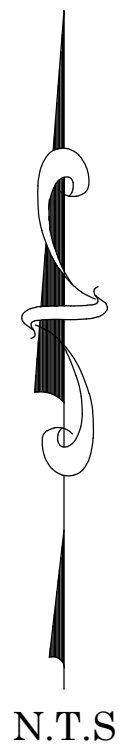
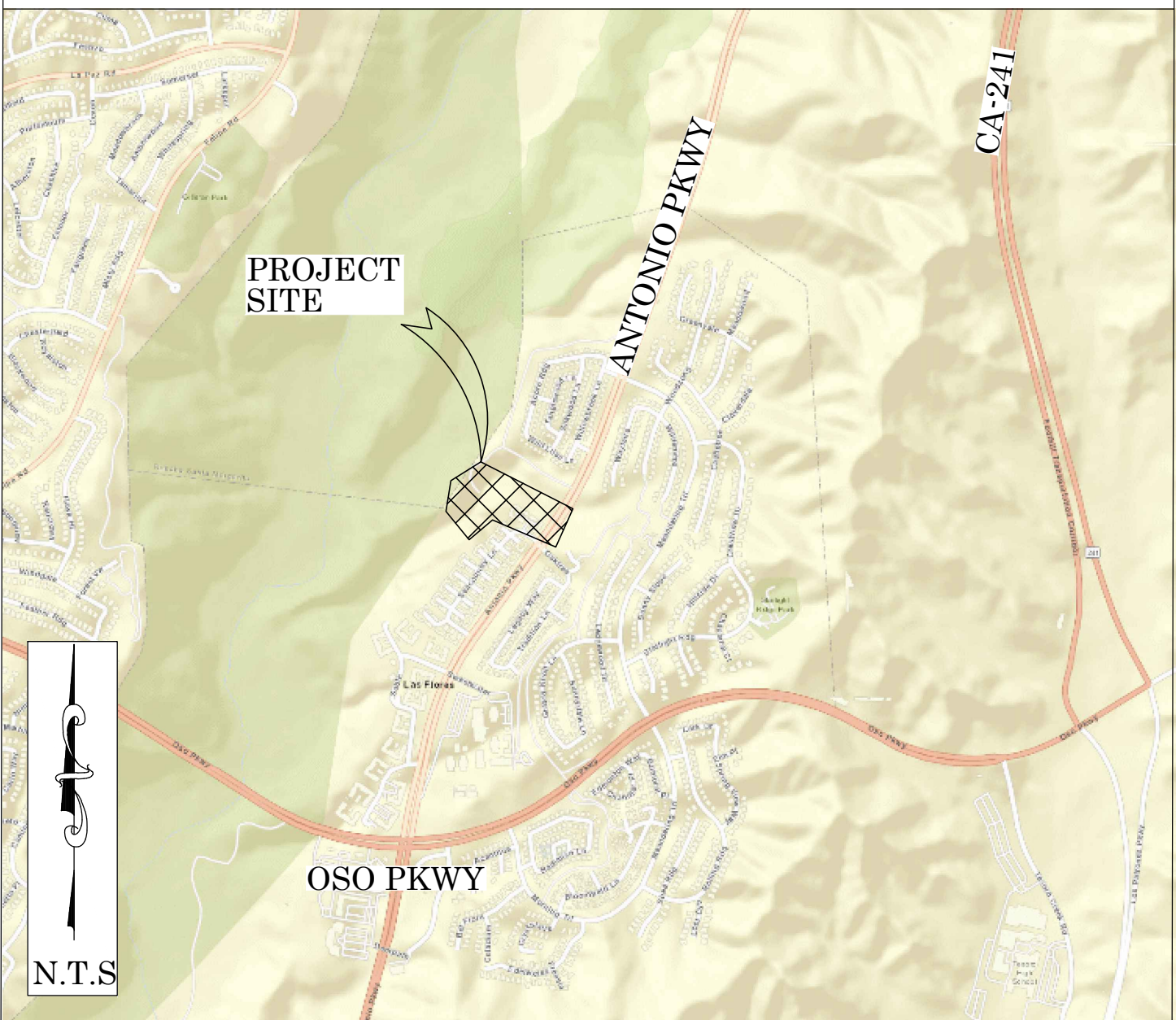


OC PUBLIC WORKS DEPARTMENT  
JAMES TREADAWAY, DIRECTOR OF PUBLIC WORKS  
KEVIN HILLS, COUNTY SURVEYOR  
NORTHWESTERN BASIN (L02P22)



BASIN REHABILITATION

LOCATION MAP



BASIS OF BEARINGS

THE BASIS OF BEARINGS FOR THIS SURVEY IS BASED ON THE CALIFORNIA COORDINATE SYSTEM (CCS83), ZONE VI, NAD 83, OCS (2017.50) EPOCH ADJUSTMENT, AS DETERMINED LOCALLY BY A LINE BETWEEN CONTINUOUS GLOBAL POSITIONING STATIONS CGPS STATIONS (SBCC) AND (P471) BEING NORTH 85°34'47\"/>

HORIZONTAL DATUM

COORDINATES SHOWN ARE BASED ON THE CALIFORNIA COORDINATE SYSTEM (CCS83), ZONE VI, NAD 83, OCS (2017.50) EPOCH ADJUSTMENT.  
ALL DISTANCES SHOWN ARE GRID, UNLESS OTHERWISE NOTED. TO OBTAIN GROUND DISTANCES MULTIPLY GRID BY A COMBINED FACTOR OF 1.00006140.  
THIS COMBINATION FACTOR WAS HELD AT: CP # 402  
N: 2161986.98' E: 6142570.89' EL: 645.10'  
ALL DISTANCES ARE BASED ON THE U.S. SURVEY FOOT.

VERTICAL DATUM

O.C.S. BM. 3EE-26-92 ELEV. = 584.747' YEAR LEVELED: 2004  
NAVD 1988 (O.C.S. 1995 ADJUSTMENT)  
DESCRIPTION: FOUND 3 3/4\"/>

NOTES

THE SURVEY INFORMATION SHOWN HEREON IS TO BE USED FOR TOPOGRAPHIC RELATIONSHIP ONLY AND IS NOT INTENDED FOR LAND ACQUISITION.

SHEET INDEX

SHEET	NO.	DESCRIPTION
SHEET	1	TITLE SHEET
SHEET	2-3	BOUNDARY SHEETS
SHEETS	4-6	TOPOGRAPHIC MAP

PURPOSE OF SURVEY

THE PURPOSE OF THE SURVEY IS TO PROVIDE A TOPOGRAPHIC MAP AND RIGHT OF WAY ESTABLISHMENT FOR THIS PORTION OF NORTHWESTERN BASIN (L02P22).

SENIOR LAND SURVEYOR'S CERTIFICATE:

THIS MAP CORRECTLY REPRESENTS A SURVEY MADE BY ME OR UNDER MY DIRECTION IN CONFORMANCE WITH REQUIREMENTS OF THE PROFESSIONAL LAND SURVEYOR'S ACT; THIS 9 DAY OF NOVEMBER, 2021.

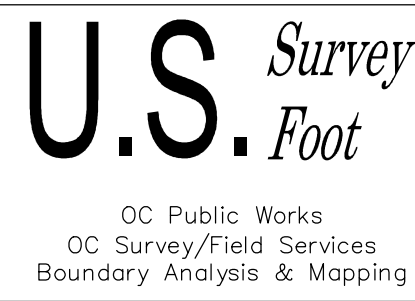
MICHAEL KUBISTY, PLS. SENIOR LAND SURVEYOR



DEPUTY COUNTY SURVEYOR'S STATEMENT:

THIS MAP HAS BEEN EXAMINED IN ACCORDANCE WITH THE PROFESSIONAL LAND SURVEYOR'S ACT; THIS 9 DAY OF NOVEMBER, 2021.

WADE WEAVER, PLS. DEPUTY COUNTY SURVEYOR



FOUND CGPS "SBCC"  
N: 2147751.75'  
E: 6131651.74'  
THIS IS A CONTINUOUS GPS STATION (CGPS) AND IS PART OF THE CALIFORNIA SPATIAL REFERENCE NETWORK (CSRN), FROM WHICH DATA CAN BE DOWNLOADED HERE: [HTTP://SOPACCSRC.UCSD.EDU/](http://SOPACCSRC.UCSD.EDU/).

BASIS OF BEARINGS  
N85°34'47\"/>

FOUND CGPS "P471"  
N: 2150595.47'  
E: 6168438.89'  
THIS IS A CONTINUOUS GPS STATION (CGPS) AND IS PART OF THE CALIFORNIA SPATIAL REFERENCE NETWORK (CSRN), FROM WHICH DATA CAN BE DOWNLOADED HERE: [HTTP://SOPACCSRC.UCSD.EDU/](http://SOPACCSRC.UCSD.EDU/).

TOPOGRAPHIC MAPPING PROJECT

			COUNTY OF ORANGE OC PUBLIC WORKS OC SURVEY/FIELD SERVICES/BOUNDARY ANALYSIS & MAPPING				
			NORTHWESTERN BASIN (L02P22) BASIN REHABILITATION				
			TITLE SHEET				
			PROJECT LIMITS: NORTHWESTERN BASIN (L02P22) BETWEEN OAK TREE LN. AND MEANDERING TRAIL NWLY OF ANTONIO PARKWAY				
			DATE OF SURVEY: 09/14/2021		BY: T. LOFGREEN & CREW		SHEET NO.  1  of  6
			MAPPING		BY: R. BELTRAN		
			OFFICE CHECK		BY: M. KUBISTY, PLS.		
			FIELD CHECK		BY: T. LOFGREEN & CREW		
			SCALE: N.T.S.		W.O. #EF21293		
			MARK	DATE	ITEM	FILE: NORTHWESTERN BASIN_TOPO_2021.DWG	
REVISIONS							



ESTABLISHMENT NOTES

- (A) ESTABLISHED THE CENTERLINE OF ANTONIO PARKWAY BY HOLDING RECORD ANGLES, DISTANCES AND CURVATURE INFORMATION PER (R1) BETWEEN MONUMENTS [1](#) AND [6](#)
- (B) S.F.N. ESTABLISHED BY HOLDING A RECORD LENGTH OF 560.41’ PER (R2) SW’LY FROM MONUMENT [1](#) ALONG ESTABLISHMENT [A](#)
- (C) S.F.N. ESTABLISHED THE NE CORNER OF LOT D OF (R7) BY HOLDING A RECORD DISTANCE OF 60’ RADIAL PER (R1) FROM ESTABLISHMENT [B](#)
- (D) ESTABLISHED A PORTION OF THE N’LY LINE OF LOT D OF (R7) BY HOLDING A LINE BETWEEN MONUMENT [8](#) AND ESTABLISHMENT [C](#)
- (E) ESTABLISHED A PORTION OF THE N’LY LINE OF LOT D OF (R7) BY HOLDING A CURVE TANGENT TO ESTABLISHMENT NOTES [D](#) AND [F](#) AND RECORD RADIUS OF 100’ PER (R1).
- (F) ESTABLISHED A PORTION OF THE N’LY LINE OF LOT D OF (R7) BY HOLDING A LINE BETWEEN MONUMENTS [9](#) AND [10](#)
- (G) ESTABLISHED A PORTION OF THE N’LY LINE OF LOT D OF (R7) BY HOLDING A CURVE TANGENT TO ESTABLISHMENT NOTES [D](#) AND [H](#) AND RECORD RADIUS OF 80’ PER (R1).
- (H) ESTABLISHED BY HOLDING A LINE BETWEEN MONUMENTS [11](#) AND [12](#)
- (I) ESTABLISHED A PORTION OF THE N’LY LINE OF LOT D OF (R7) BY HOLDING A RECORD RADIUS OF 35’ PER (R1) BETWEEN ESTABLISHMENT [H](#) AND MONUMENT [13](#) TANGENT TO ESTABLISHMENT [H](#)
- (J) ESTABLISHED THE N’LY LINE OF LOT D OF (R7) BY HOLDING A RECORD DISTANCE OF 20’ PER (R1) NW’LY ALONG A RADIAL LINE FROM MONUMENT [13](#)
- (K) ESTABLISHED A PORTION OF THE N’LY LINE OF LOT D OF (R7) BY HOLDING A LINE BETWEEN ESTABLISHMENT [C](#) AND MONUMENT [13](#)
- (L) ESTABLISHED A PORTION OF THE NW’LY LINE OF LOT D OF (R7) BY HOLDING A LINE BETWEEN MONUMENTS [15](#) AND [16](#)
- (M) ESTABLISHED A PORTION OF THE W’LY LINE OF LOT D OF (R7) BY HOLDING A LINE BETWEEN MONUMENTS [16](#) AND [17](#)
- (N) ESTABLISHED A PORTION OF THE SW’LY LINE OF LOT D OF (R7) BY HOLDING A LINE BETWEEN MONUMENTS [17](#) AND [27](#)
- (O) ESTABLISHED A PORTION OF THE S’LY LINE OF LOT D OF (R7) BY HOLDING A LINE BETWEEN MONUMENTS [27](#) AND [18](#)
- (P) ESTABLISHED A PORTION OF THE S’LY LINE OF LOT D OF (R7) BY HOLDING A LINE BETWEEN MONUMENTS [18](#) AND [19](#)
- (Q) S.F.N. ESTABLISHED AN ANGLE POINT ON THE S’LY LINE OF LOT D OF (R7) BY PROPOTION BETWEEN MONUMENTS [27](#) AND [18](#) PER (R7).
- (R) ESTABLISHED A PORTION OF THE S’LY LINE OF LOT D OF (R7) BY LEAST SQUARES ADJUSTMENT BETWEEN MONUMENTS [19](#) AND [22](#)
- (S) ESTABLISHED BC OF A PORTION OF THE S’LY LINE LOT D OF (R7) BY LEAST SQUARES ADJUSTMENT BETWEEN MONUMENTS [19](#) AND [22](#)
- (T) ESTABLISHED CC OF A PORTION OF THE S’LY LINE LOT D OF (R7) BY LEAST SQUARES ADJUSTMENT BETWEEN MONUMENTS [19](#) AND [22](#)
- (U) ESTABLISHED EC OF A PORTION OF THE S’LY LINE LOT D OF (R7) BY LEAST SQUARES ADJUSTMENT BETWEEN MONUMENTS [19](#) AND [22](#)
- (V) ESTABLISHED A PORTION OF THE S’LY OF LOT D OF (R7) BY LEAST SQUARES ADJUSTMENT BETWEEN MONUMENTS [22](#) AND [23](#)
- (W) ESTABLISHED PRC OF A PORTION OF THE S’LY LINE LOT D OF (R7) BY LEAST SQUARES ADJUSTMENT BETWEEN MONUMENTS [22](#) AND [23](#)
- (X) ESTABLISHED PRC OF A PORTION OF THE S’LY LINE LOT D OF (R7) BY LEAST SQUARES ADJUSTMENT BETWEEN MONUMENTS [22](#) AND [23](#)
- (Y) S.F.N. ESTABLISHED THE SE’LY CORNER OF LOT D OF (R7) BY INTERSECTING ESTABLISHMENT [Z](#) AND A LINE TANGENT TO ESTABLISHMENT [Y](#)
- (Z) ESTABLISHED A PORTION OF THE NW’LY RIGHT OF WAY OF ANTONIO PARKWAY BY HOLDING A RECORD DISTANCE OF 60’ PER (R1) W’LY OF AND CONCENTRIC WITH ESTABLISHMENT [A](#) BETWEEN ESTABLISHMENTS [C](#) AND [Y](#)

- (AA) ESTABLISHED A PORTION OF THE S’LY LINE OF LOT D OF (R7) BY HOLDING A LINE BETWEEN MONUMENT [23](#) AND ESTABLISHMENT [Y](#)
- (AB) S.F.N. ESTABLISHED BY INTERSECTING ESTABLISHMENT [A](#) AND THE SE’LY PROLONGATION OF ESTABLISHMENT [Z](#)
- (AC) S.F.N. ESTABLISHED AN ANGLE POINT ON THE S’LY LINE OF LOT D OF (R7) BY PROPOTION BETWEEN MONUMENTS [18](#) AND [19](#) PER (R7)
- (AD) S.F.N. ESTABLISHED AN ANGLE POINT IN THE S’LY LINE OF LOT D OF (R7) BY DISTANCE–DISTANCE–INTERSECTION BETWEEN ESTABLISHMENT NOTES [A](#) AND [Q](#)
- (AH) ESTABLISHED A PORTION OF THE W’LY LINE OF LOT F AND LOT C OF (R7) BY LEAST SQUARES ADJUSTMNET BETWEEN MONUMENTS [27](#) AND [23](#)
- (AI) ESTABLISHED AN ANGLE POINT ON THE W’LY LINE OF LOT C OF (R7) BY LEAST SQUARES ADJUSTMNET BETWEEN MONUMENTS [27](#) AND [29](#)
- (AJ) ESTABLISHED A PORTION OF THE W’LY LINE OF LOT C OF (R7) BY LEAST SQUARES ADJUSTMENT BETWEEN MONUMENTS [27](#) AND [23](#)
- (AK) ESTABLISHED THE S’LY LINE OF (R7) BY HOLDING A LINE BETWEEN MONUMENTS [23](#) AND [5](#)
- (AL) ESTABLISHED THE CENTERLINE BC OF ANTONIO PARKWAY BY HOLDING RECORD DISTACNE PER (R1) NE’LY OF MONUMENT [3](#) ALONG ESTABLISHMENT NOTE [A](#)

MONUMENT NOTES

- [1](#) FOUND 2” IRON PIPE TACK AND TAG STAMPED "LS 5557" PER (R1), DOWN 0.50’ IN DIRT. ACCEPTED AS CENTERLINE BC OF ANTONIO PARKWAY.
- [2](#) FOUND SQUARE HEAD SPIKE WITH 1–1/2” WASHER STAMPED "LS 5557" PER (R1), FLUSH IN AC, S75°38’31"W 0.07’ FROM CENTERLINE EC OF ANTONIO PARKWAY.
- [3](#) FOUND SQUARE HEAD SPIKE WITH 1–1/2” WASHER STAMPED "LS 5557" PER (R1), FLUSH IN AC, ACCEPTED AS BC ON CENTERLINE OF ANTONIO PARKWAY.
- [4](#) FOUND 2” IRON PIPE WITH TACK AND TAG STAMPED "LS 5557" PER (R1), DOWN 0.60’ IN DIRT. ACCEPTED AS CENTERLINE BC OF ANTONIO PARKWAY.
- [5](#) FOUND SQUARE HEAD SPIKE WITH PUNCH AND 1–1/2” WASHER STAMPED "LS 5347" IN LIEU OF SPIKE AND WASHER TAGGED "LS 5557" PER (R3), FLUSH IN AC, ACCEPTED AS POINT ON CENTERLINE OF ANTONIO PARKWAY, AND THE SE CORNER OF LOT 1 PER (R1).
- [6](#) FOUND SQUARE HEAD SPIKE WITH 1–1/2” WASHER STAMPED "LS 5557" PER (R1), FLUSH IN AC, ACCEPTED AS CENTERLINE EC OF ANTONIO PARKWAY.
- [7](#) FOUND LEAD, TACK AND TAG STAMPED "LS 5557" PER (R1), FLUSH IN CONCRETE N28°44’58"E 0.03’ FROM 8.80’ OFFSET OF ESTABLISHMENT [C](#)
- [8](#) FOUND 2” IRON PIPE WITH TACK AND TAG STAMPED "LS 5557" PER (R1), DOWN 0.30’ IN DIRT. S59°27’45"E 0.08’ FROM BC OF THE N’LY LINE OF LOT D OF (R7), ACCEPTED AS POINT ON TANGENT OF LOT D OF (R7).
- [9](#) FOUND 2” IRON PIPE WITH TACK AND TAG STAMPED "LS 5557" PER (R1), DOWN 0.20’ IN DIRT. S48°47’31"E 0.16’ FROM EC OF THE N’LY LINE OF LOT D OF (R7) ACCEPTED AS POINT ON TANGENT OF LOT D OF (R7).
- [10](#) FOUND SQUARE HEAD SPIKE AND WASHER STAMPED "LS 5557" PER (R1), FLUSH IN AC, N40°28’54"W 0.14’ FROM BC OF THE N’LY LINE OF LOT D OF (R7) ACCEPTED AS POINT ON TANGENT OF LOT D OF (R7).
- [11](#) FOUND LEAD, TACK AND TAG STAMPED "LS 5557" PER (R1), FLUSH IN CONCRETE. ACCEPTED AS EC OF LOT D OF (R7).
- [12](#) FOUND 2” IRON PIPE WITH TACK AND TAG STAMPED "LS 5557" PER (R1), FLUSH IN DIRT. ACCEPTED AS BC OF LOT D OF (R7).
- [13](#) FOUND 2” IRON PIPE WITH TACK AND TAG STAMPED "LS 5557" PER (R1), FLUSH IN DIRT. ACCEPTED AS EC OF LOT D OF (R7).
- [14](#) FOUND 2” IRON PIPE WITH TACK AND TAG STAMPED "LS 5557" PER (R1), FLUSH IN DIRT. S88°58’43"W 0.99’ FROM ANGLE POINT OF LOT D OF (R7).
- [15](#) FOUND 2” IRON PIPE WITH TACK AND TAG STAMPED "LS 5557" PER (R1), FLUSH IN DIRT. ACCEPTED AS ANGLE POINT OF LOT D OF (R7).
- [16](#) FOUND 2” IRON PIPE TACK AND TAG STAMPED "LS 5557" PER (R1), UP 0.30’ IN DIRT. ACCEPTED AS ANGLE POINT OF LOT D OF (R7).
- [17](#) FOUND 2” IRON PIPE TACK AND TAG STAMPED "LS 5557" PER (R1), UP 0.60’ IN DIRT. ACCEPTED AS ANGLE POINT OF LOT D OF (R7).
- [18](#) FOUND 1” IRON PIPE WITH TACK AND TAG STAMPED "LS 5557" PER (R1), FLUSH IN DIRT. ACCEPTED AS ANGLE POINT OF LOT B OF (R1).
- [19](#) FOUND 2” IRON PIPE WITH TACK AND TAG STAMPED "LS 5557" PER (R1), UP 0.10’ IN DIRT. ACCEPTED AS ANGLE POINT OF LOT D OF (R7).
- [20](#) FOUND 2” IRON PIPE WITH TACK AND TAG STAMPED "LS 5557" PER (R1), DOWN 0.20’ IN DIRT. S23°49’58"E 4.22’ FROM PCC OF LOT D OF (R7). NO CERTIFICATE OF CORRECTION FOUND AND NO MENTION OF OFFSET MONUMENT PER (R1).
- [21](#) FOUND 2” IRON PIPE WITH TACK AND TAG STAMPED "LS 5557" PER (R1), UP 0.20’ IN DIRT. N60°59’8"W 1.04’ FROM EC OF THE S’LY LINE OF LOT D OF (R7) ACCEPTED AS POINT ON TANGENT OF LOT D OF (R7).
- [22](#) FOUND 2” IRON PIPE WITH TACK AND TAG STAMPED "LS 5557" PER (R1), DOWN 0.10 IN DIRT. ACCEPTED AS BC OF LOT D OF (R7).
- [23](#) FOUND 2” IRON PIPE WITH TACK AND TAG STAMPED "LS 5557" PER (R1), FLUSH IN DIRT. ACCEPTED AS POINT ON THE S’LY LINE OF LOT D. S62°31’11"E 0.07’ FROM PRC OF LOT D OF (R7).
- [24](#) FOUND 2” IRON PIPE WITH TACK AND TAG STAMPED "LS 5557" PER (R1), DOWN 0.10’ IN DIRT. ACCEPTED AS POINT ON THE S’LY LINE OF LOT D. S75°30’18"E 0.11’ FROM PRC OF LOT D OF (R7).
- [25](#) FOUND 2” IRON PIPE WITH TACK AND TAG STAMPED "LS 5557" PER (R1), FLUSH IN DIRT. ACCEPTED AS EC OF LOT D OF (R7).
- [26](#) FOUND LEAD IN CONCRETE IN LIEU OF NAIL W/ TAG STAMPED "LS 5557" PER (R1), N33°03’39"E 5.00’ FROM 8.72’ PROLONGATION OF ESTABLISHMENT NOTE [Z](#) OF LOT D PER (R1). NO CERTIFICATE OF CORRECTION FOUND AND NO MENTION OF OFFSET MONUMENT PER (R1).
- [27](#) FOUND 2” IRON PIPE WITH TACK AND TAG STAMPED "LS 5557" PER (R1), UP 0.10’ IN DIRT. ACCEPTED AS ANGLE POINT OF LOT D OF (R7).
- [28](#) FOUND 2” IRON PIPE WITH TACK AND TAG STAMPED "LS 5557" PER (R2), UP 0.10’ IN DIRT. ACCEPTED AS THE NW’LY CORNER OF TRACT 15049 (R2) AND TRACT 15118 (R4).
- [29](#) FOUND 2” IRON PIPE WITH TACK AND TAG STAMPED "LS 5557" PER (R1), UP 0.10’ IN DIRT. ACCEPTED AS SW’LY ANGLE POINT OF (R1).

BASIS OF BEARINGS

THE BASIS OF BEARINGS FOR THIS SURVEY IS BASED ON THE CALIFORNIA COORDINATE SYSTEM (CCS83). ZONE VI, NAD 83, OCS (2017.50) EPOCH ADJUSTMENT, AS DETERMINED LOCALLY BY A LINE BETWEEN CONTINUOUS GLOBAL POSITIONING STATIONS CGPS STATIONS (SBCC) AND (P471) BEING NORTH 85°34’47” EAST AS DERIVED FROM THE COORDINATES PUBLISHED BY THE CALIFORNIA SPATIAL REFERENCE CENTER (CSRC) ALONG WITH DATA SHEETS ON FILE IN THE OFFICE OF THE ORANGE COUNTY SURVEYOR.

HORIZONTAL DATUM

COORDINATES SHOWN ARE BASED ON THE CALIFORNIA COORDINATE SYSTEM (CCS83), ZONE VI, NAD 83, OCS (2017.50) EPOCH ADJUSTMENT.

ALL DISTANCES SHOWN ARE GRID, UNLESS OTHERWISE NOTED. TO OBTAIN GROUND DISTANCE MULTIPLY A GRID DISTANCE BY 1.00006140.

THIS COMBINATION FACTOR WAS HELD AT: CP# 402 N:2161986.98’ E:6142570.89’ EL:645.10’, AS SHOWN ON SHEET 1.

RECORD DISTANCES SHOWN HEREON ARE AS THEY APPEAR ON THE DOCUMENT OF RECORD. DISTANCES MAY BE EITHER GRID OR GROUND, AS PER SAID RECORD.

ALL DISTANCES ARE BASED ON THE U.S. SURVEY FOOT.

NOTES

ALL BOUNDARY LINES NOT SHOWN IN BOLD ARE FOR GRAPHICAL REPRESENTATION ONLY.

REFERENCE DOCUMENTS IN THE REFERENCE LEGEND ARE LIVE HYPERLINKS TO SAID DOCUMENT.

MONUMENT SYMBOLS CONTAIN LIVE HYPERLINKS TO IMAGES, IF THEY EXIST, OF RESPECTIVE MONUMENT.

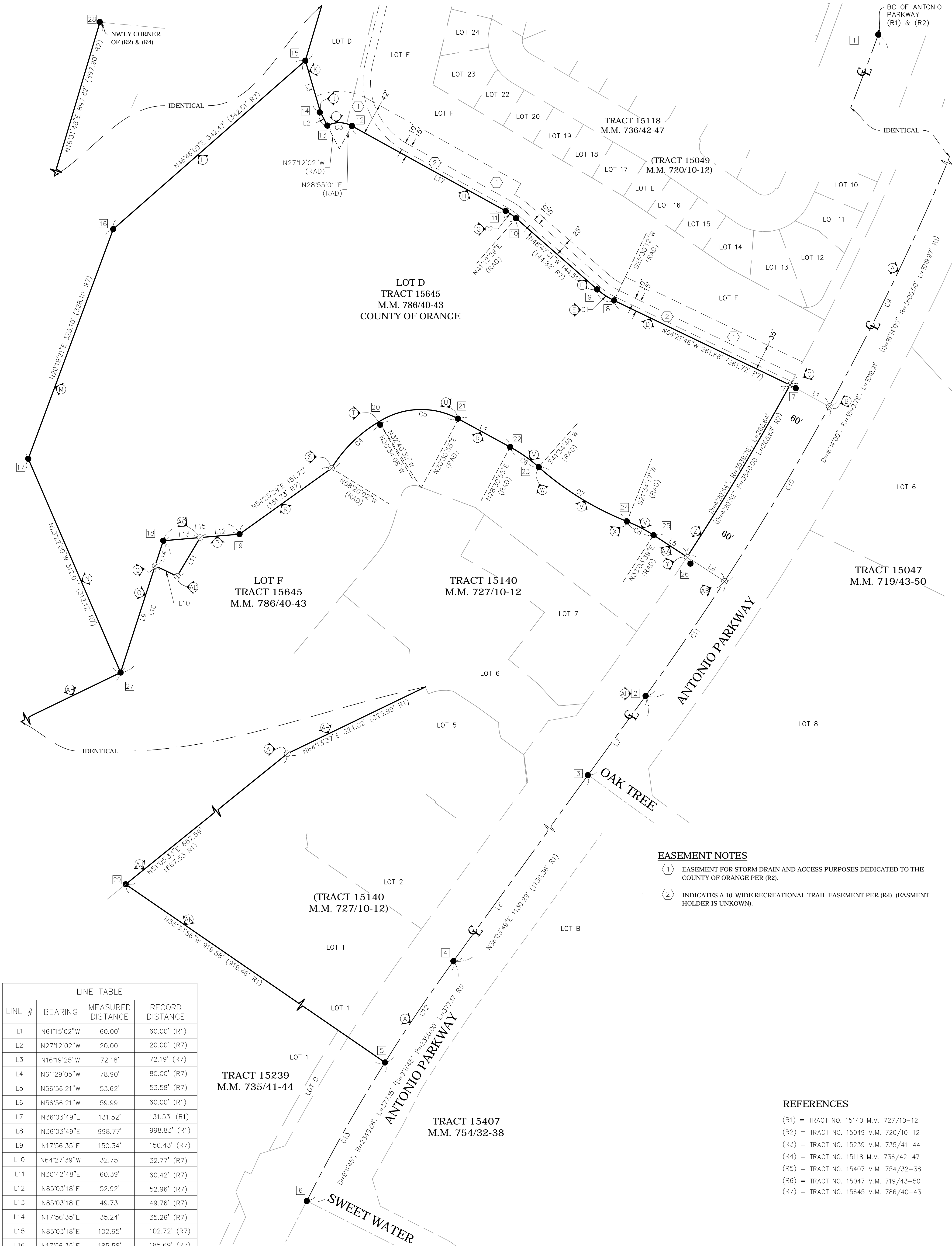
EASEMENT NOTES

- [1](#) EASEMENT FOR STORM DRAIN AND ACCESS PURPOSES DEDICATED TO THE COUNTY OF ORANGE PER (R2).
- [2](#) INDICATES A 10’ WIDE RECREATIONAL TRAIL EASEMENT PER (R4). (EASMENT HOLDER IS UNKNOWN).

REFERENCES

- (R1) = TRACT NO. 15140 M.M. 727/10–12
- (R2) = TRACT NO. 15049 M.M. 720/10–12
- (R3) = TRACT NO. 15239 M.M. 735/41–44
- (R4) = TRACT NO. 15118 M.M. 736/42–47
- (R5) = TRACT NO. 15407 M.M. 754/32–38
- (R6) = TRACT NO. 15047 M.M. 719/43–50
- (R7) = TRACT NO. 15645 M.M. 786/40–43

			COUNTY OF ORANGE OC PUBLIC WORKS OC SURVEY/FIELD SERVICES/BOUNDARY ANALYSIS & MAPPING			
			NORTHWESTERN BASIN (L02P22) BASIN REHABILITATION			
			BOUNDARY MAP			
			PROJECT LIMITS: NORTHWESTERN BASIN (L02P22) BETWEEN OAK TREE LN. AND MEANDERING TRAIL NWLY OF ANTONIO PARKWAY			
			DATE OF SURVEY: 09/14/2021		SHEET NO.  2 of 6	
			MAPPING			
			OFFICE CHECK			
MARK	DATE	ITEM	FIELD CHECK			
REVISIONS			SCALE: 1" = 60'	W.O. #EF21293		FILE # 2021PW-OP0002
			FILE: NORTHWESTERN BASIN_BOUNDARY_2021.DWG			



LINE TABLE			
LINE #	BEARING	MEASURED DISTANCE	RECORD DISTANCE
L1	N61°15'02"W	60.00'	60.00' (R1)
L2	N27°12'02"W	20.00'	20.00' (R7)
L3	N16°19'25"W	72.18'	72.19' (R7)
L4	N61°29'05"W	78.90'	80.00' (R7)
L5	N56°56'21"W	53.62'	53.58' (R7)
L6	N56°56'21"W	59.99'	60.00' (R1)
L7	N36°03'49"E	131.52'	131.53' (R1)
L8	N36°03'49"E	998.77'	998.83' (R1)
L9	N17°56'35"E	150.34'	150.43' (R7)
L10	N64°27'39"W	32.75'	32.77' (R7)
L11	N30°42'48"E	60.39'	60.42' (R7)
L12	N85°03'18"E	52.92'	52.96' (R7)
L13	N85°03'18"E	49.73'	49.76' (R7)
L14	N17°56'35"E	35.24'	35.26' (R7)
L15	N85°03'18"E	102.65'	102.72' (R7)
L16	N17°56'35"E	185.58'	185.69' (R7)
L17	N61°04'59"W	235.44'	235.45' (R7)

CURVE TABLE						
CURVE #	DELTA	RADIUS	LENGTH	RECORD DELTA	RECORD RADIUS	RECORD LENGTH
C1	15°34'17"	99.99'	27.17'	15°26'01" (R7)	100.00' (R7)	26.94' (R7)
C2	12°18'38"	80.00'	17.19'	12°12'31" (R7)	80.00' (R7)	17.05' (R7)
C3	56°07'03"	35.00'	34.28'	56°06'29" (R7)	35.00' (R7)	34.27' (R7)
C4	27°45'54"	184.99'	89.64'	27°45'44" (R7)	185.00' (R7)	89.64' (R7)
C5	61°11'27"	104.99'	112.13'	61°11'05" (R7)	105.00' (R7)	112.13' (R7)
C6	13°03'51"	204.99'	46.74'	13°05'24" (R7)	205.00' (R7)	46.84' (R7)
C7	20°00'28"	399.98'	139.67'	19°58'57" (R7)	400.00' (R7)	139.50' (R7)
C8	11°29'22"	199.99'	40.10'	11°31'38" (R7)	200.00' (R7)	40.24' (R7)
C9	8°55'09"	3599.78'	560.38'	8°55'09" (R2)	3600.00' (R2)	560.41' (R2)
C10	4°20'52"	3599.78'	273.16'	4°20'52" (C R1)	3600.00' (C R1)	273.17' (C R1)
C11	2°57'59"	3599.78'	186.37'	2°57'59" (C R1)	3600.00' (C R1)	186.36' (C R1)
C12	3°59'58"	2349.86'	164.03'	3°59'57" (R1)	2350.00' (R1)	164.03' (R1)
C13	5°11'47"	2349.86'	213.12'	5°11'48" (C R1)	2350.00' (C R1)	213.14' (C R1)

EASEMENT NOTES

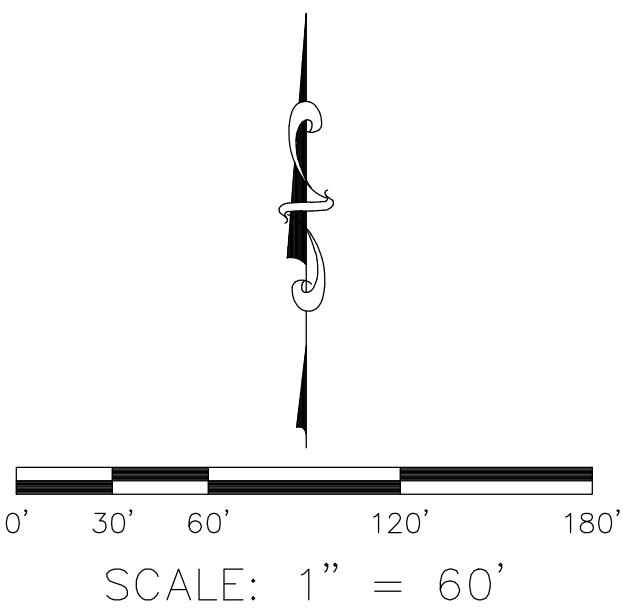
- ① EASEMENT FOR STORM DRAIN AND ACCESS PURPOSES DEDICATED TO THE COUNTY OF ORANGE PER (R2).
- ② INDICATES A 10' WIDE RECREATIONAL TRAIL EASEMENT PER (R4). (EASMENT HOLDER IS UNKNOWN).

REFERENCES

- (R1) = TRACT NO. 15140 M.M. 727/10-12
- (R2) = TRACT NO. 15049 M.M. 720/10-12
- (R3) = TRACT NO. 15239 M.M. 735/41-44
- (R4) = TRACT NO. 15118 M.M. 736/42-47
- (R5) = TRACT NO. 15407 M.M. 754/32-38
- (R6) = TRACT NO. 15047 M.M. 719/43-50
- (R7) = TRACT NO. 15645 M.M. 786/40-43

LEGEND

- FOUND MONUMENT AS NOTED
- ⊗ S.F.N. - SEARCHED, NOTHING FOUND
- C CALC FROM RECORD
- R RECORD MAP
- M MEASURED



U.S. Survey  
Foot

OC Public Works  
OC Survey/Field Services  
Boundary Analysis & Mapping

			COUNTY OF ORANGE OC PUBLIC WORKS OC SURVEY/FIELD SERVICES/BOUNDARY ANALYSIS & MAPPING					
			NORTHWESTERN BASIN (L02P22) BASIN REHABILITATION					
			BOUNDARY MAP					
			PROJECT LIMITS: NORTHWESTERN BASIN (L02P22) BETWEEN OAK TREE LN. AND MEANDERING TRAIL NWLY OF ANTONIO PARKWAY					
			DATE OF SURVEY: 09/14/2021 MAPPING		BY: T. LOFGREEN & CREW BY: R. BELTRAN		SHEET NO.  3 of  6	
			OFFICE CHECK		BY: M. KUBISTY, PLS			
MARK	DATE	ITEM	FIELD CHECK		BY: T. LOFGREEN & CREW			
			SCALE: 1" = 60'		W.O. #EF21293			
		REVISIONS	FILE: NORTHWESTERN BASIN_BOUNDARY_2021.DWG					

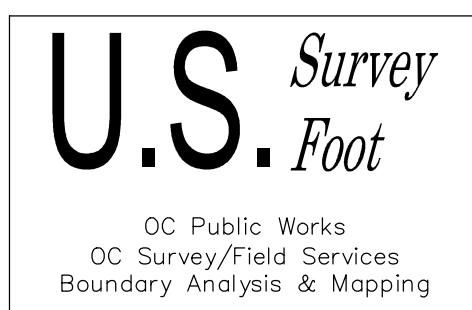


SEE SHEET 5

SEE SHEET 5

EASEMENT NOTES

- 1 EASEMENT FOR STORM DRAIN AND ACCESS PURPOSES DEDICATED TO THE COUNTY OF ORANGE PER (R2).
- 2 INDICATES A 10' WIDE RECREATIONAL TRAIL EASEMENT PER (R4). (EASMENT HOLDER IS UNKNOWN).



LEGEND

SYMBOL

- Control Point  
Drop Inlet  
Gate, Single  
Light Pole, Double  
Manhole Storm Drain  
Pilaster  
Pipe Inlet/Outlet  
Post  
Pull Box Electrical  
Pull Box Irrigation  
Pull Box Traffic  
Sign Post  
Tree  
Valve Gas  
Valve Irrigation

ABBREVIATION

- AC Asphalt Concrete  
CL Centerline  
CONC Concrete  
CP Control Point  
CMP Corrugated Metal Pipe  
EL Elevation  
EC End of Curve  
FL Flowline  
FD Found  
INV Invert  
PVC Polyvinyl Chloride  
RCP Reinforced Concrete Pipe  
TW Top of Wall

AREA PATTERN KEY

- Concrete  
Dirt

LINE PATTERN KEY

- Centerline  
Concrete Wall  
Edge of Concrete  
Edge of Asphalt Pavement  
Fence Chainlink  
Fence Pipe and Cable  
Fence Wood  
Flowline  
Grade Line  
Guard Rail  
Hinge Point  
Property Line  
Right of Way  
Limits Of Area Under Water  
Limits Of EASEMENT

SCALE: 1" = 20'  
CONTOUR INTERVAL: 1'

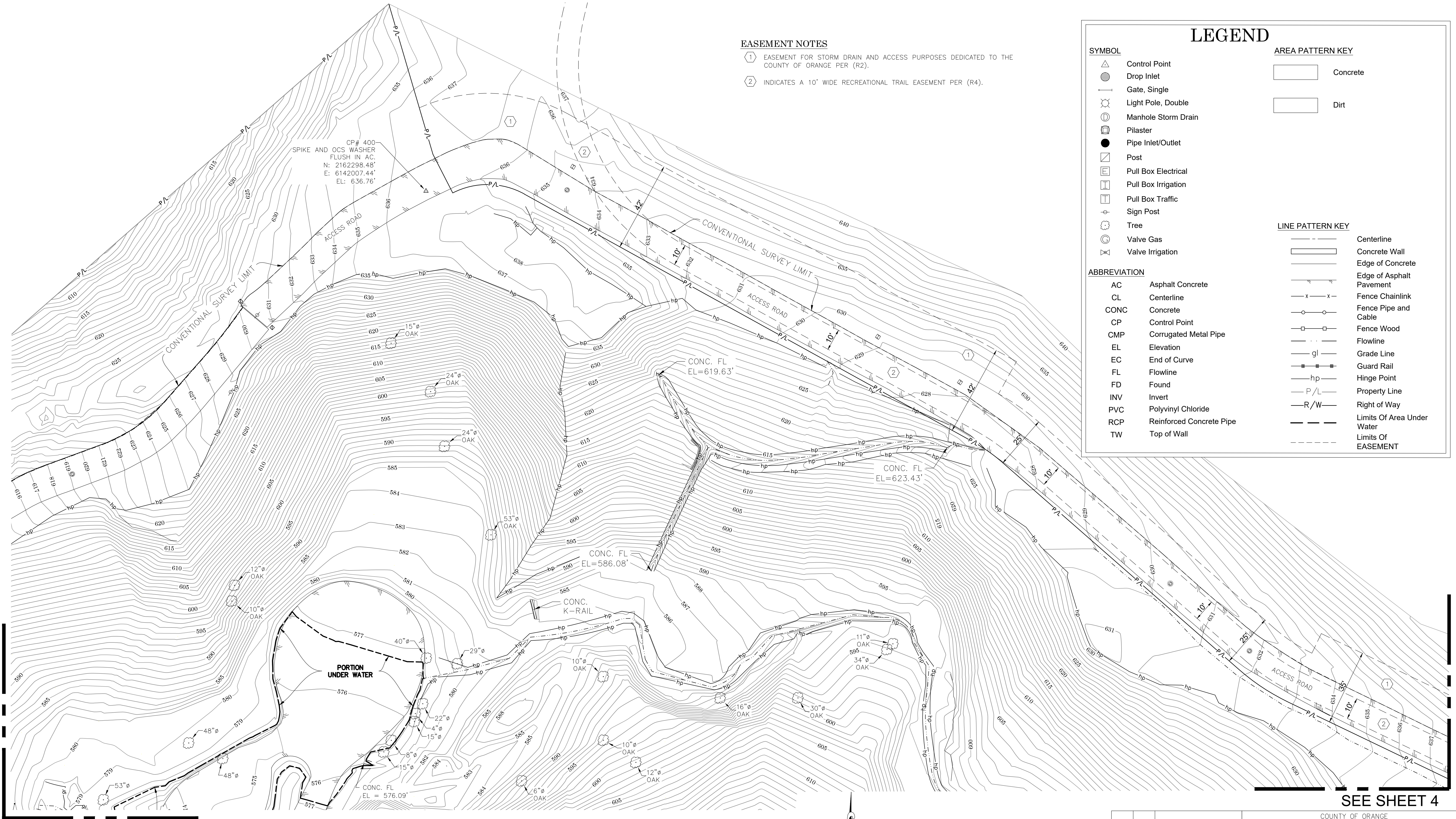
COUNTY OF ORANGE  
OC PUBLIC WORKS  
OC SURVEY/FIELD SERVICES/BOUNDARY ANALYSIS & MAPPING

NORTHWESTERN BASIN (L02P22)  
BASIN REHABILITATION

TOPOGRAPHIC MAP  
PROJECT LIMITS: NORTHWESTERN BASIN (L02P22) BETWEEN OAK TREE LN. AND  
MEANDERING TRAIL NWLY OF ANTONIO PARKWAY  
DATE OF SURVEY: 09/14/2021  
MAPPING BY: T. LOFGREEN & CREW  
OFFICE CHECK BY: R. BELTRAN  
FIELD CHECK BY: M. KUBISTY, PLS  
SCALE: 1" = 20' W.O. #EF21293 FILE #2021PW-OPD002  
FILE: NORTHWESTERN BASIN\_TOPO\_2021.DWG

SHEET NO.  
4 of  
6





**EASEMENT NOTES**

① EASEMENT FOR STORM DRAIN AND ACCESS PURPOSES DEDICATED TO THE COUNTY OF ORANGE PER (R2).

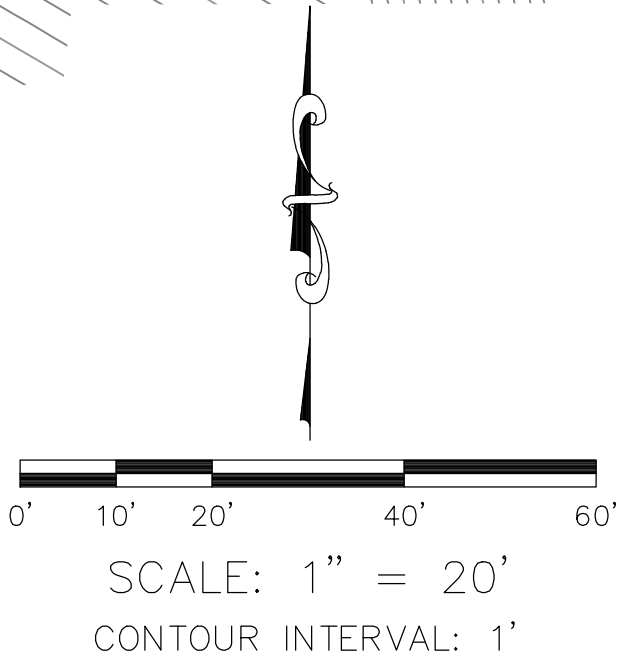
② INDICATES A 10' WIDE RECREATIONAL TRAIL EASEMENT PER (R4).

## LEGEND

SYMBOL		AREA PATTERN KEY	
	Control Point		Concrete
	Drop Inlet		Dirt
	Gate, Single		
	Light Pole, Double		
	Manhole Storm Drain		
	Pillar		
	Pipe Inlet/Outlet		
	Post		
	Pull Box Electrical		
	Pull Box Irrigation		
	Pull Box Traffic		
	Sign Post		
	Tree		
	Valve Gas		
	Valve Irrigation		
ABBREVIATION		LINE PATTERN KEY	
AC	Asphalt Concrete		Centerline
CL	Centerline		Concrete Wall
CONC	Concrete		Edge of Concrete
CP	Control Point		Edge of Asphalt Pavement
CMP	Corrugated Metal Pipe		Fence Chainlink
EL	Elevation		Fence Pipe and Cable
EC	End of Curve		Fence Wood
FL	Flowline		Flowline
FD	Found		Grade Line
INV	Invert		Guard Rail
PVC	Polyvinyl Chloride		Hinge Point
RCP	Reinforced Concrete Pipe		Property Line
TW	Top of Wall		Right of Way
			Limits Of Area Under Water
			Limits Of EASEMENT

SEE SHEET 6

SEE SHEET 4



**U.S. Survey**  
*Foot*  
OC Public Works  
OC Survey/Field Services  
Boundary Analysis & Mapping

			COUNTY OF ORANGE OC PUBLIC WORKS OC SURVEY/FIELD SERVICES/BOUNDARY ANALYSIS & MAPPING			
			NORTHWESTERN BASIN (L02P22) BASIN REHABILITATION			
			TOPOGRAPHIC MAP			
			PROJECT LIMITS: NORTHWESTERN BASIN (L02P22) BETWEEN OAK TREE LN. AND MEANDERING TRAIL NWLY OF ANTONIO PARKWAY			
			DATE OF SURVEY: 09/14/2021	BY: T. LOFGREEN & CREW	SHEET NO.  5 of 6	
			MAPPING	BY: R. BELTRAN		
			OFFICE CHECK	BY: M. KUBISTY, PLS		
			FIELD CHECK	BY: T. LOFGREEN & CREW		
MARK	DATE	ITEM	SCALE: 1" = 20'	W.O. #EF21293	FILE #2021PW-OP0002	
		REVISIONS	FILE: NORTHWESTERN BASIN_TOPO_2021.DWG			



LEGEND

- SYMBOL**

  - Control Point
  - Drop Inlet
  - Gate, Single
  - Light Pole, Double
  - Manhole Storm Drain
  - Pilaster
  - Pipe Inlet/Outlet
  - Post
  - Pull Box Electrical
  - Pull Box Irrigation
  - Pull Box Traffic
  - Sign Post
  - Tree
  - Valve Gas
  - Valve Irrigation
- AREA PATTERN KEY**

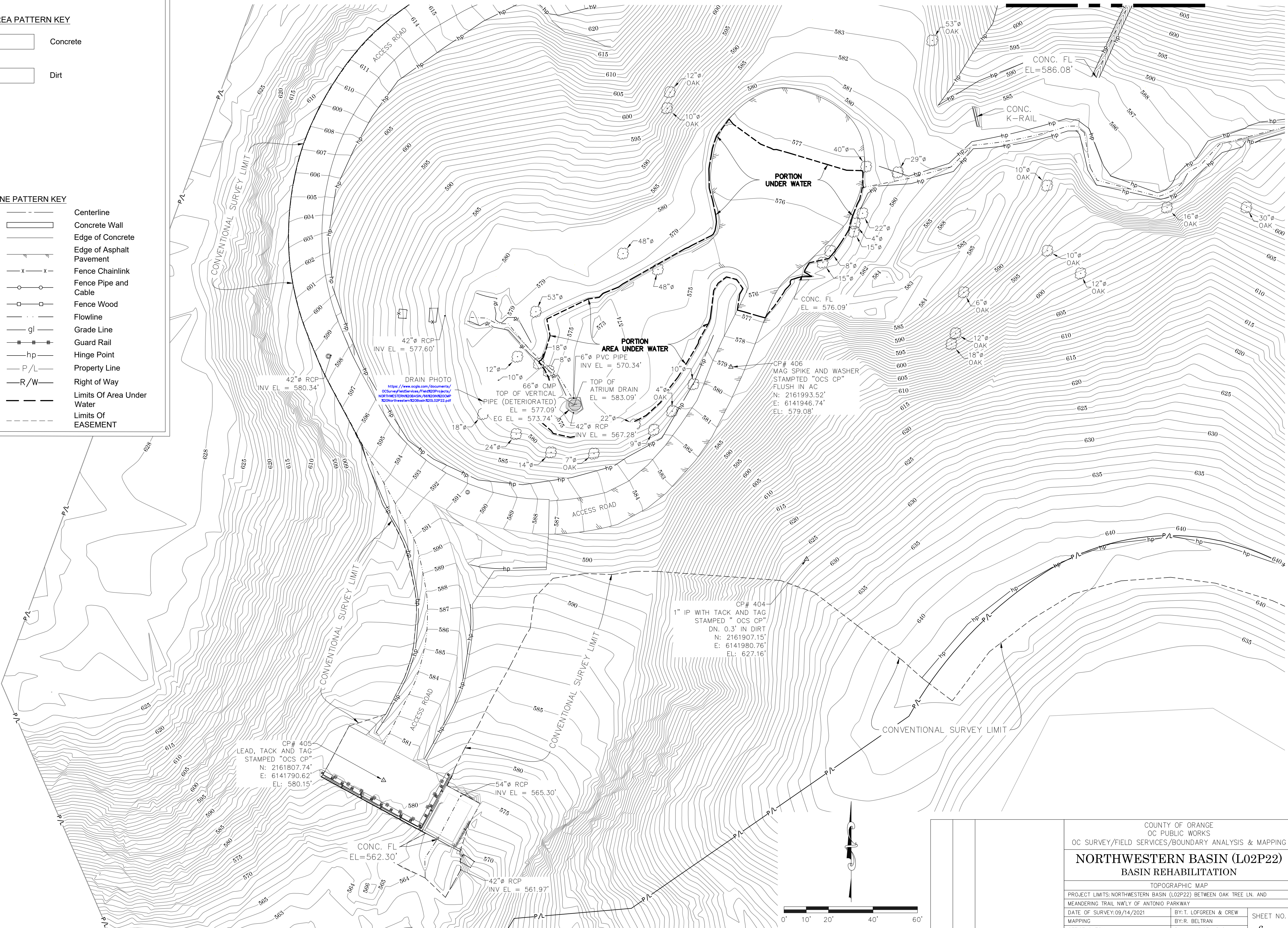
  - Concrete
  - Dirt

- ABBREVIATION**

  - AC Asphalt Concrete
  - CL Centerline
  - CONC Concrete
  - CP Control Point
  - CMP Corrugated Metal Pipe
  - EL Elevation
  - EC End of Curve
  - FL Flowline
  - FD Found
  - INV Invert
  - PVC Polyvinyl Chloride
  - RCP Reinforced Concrete Pipe
  - TW Top of Wall
- LINE PATTERN KEY**

  - Centerline
  - Concrete Wall
  - Edge of Concrete
  - Edge of Asphalt Pavement
  - Fence Chainlink
  - Fence Pipe and Cable
  - Fence Wood
  - Flowline
  - Grade Line
  - Guard Rail
  - Hinge Point
  - Property Line
  - Right of Way
  - Limits Of Area Under Water
  - Limits Of EASEMENT

SEE SHEET 5



COUNTY OF ORANGE OC PUBLIC WORKS OC SURVEY/FIELD SERVICES/BOUNDARY ANALYSIS & MAPPING			NORTHWESTERN BASIN (L02P22) BASIN REHABILITATION	
TOPOGRAPHIC MAP PROJECT LIMITS: NORTHWESTERN BASIN (L02P22) BETWEEN OAK TREE LN. AND MEANDERING TRAIL NWLY OF ANTONIO PARKWAY			SHEET NO. 6 of 6	
DATE OF SURVEY: 09/14/2021			BY: T. LOFGREEN & CREW	
MAPPING			BY: R. BELTRAN	
OFFICE CHECK			BY: M. KUBISTY, PLS	
FIELD CHECK			BY: T. LOFGREEN & CREW	
SCALE: 1" = 20'			W.O. #EF21293 FILE #2021PW-OPD002	
REVISIONS			FILE: NORTHWESTERN BASIN_TOPO_2021.DWG	