

TRACT N^o 2736

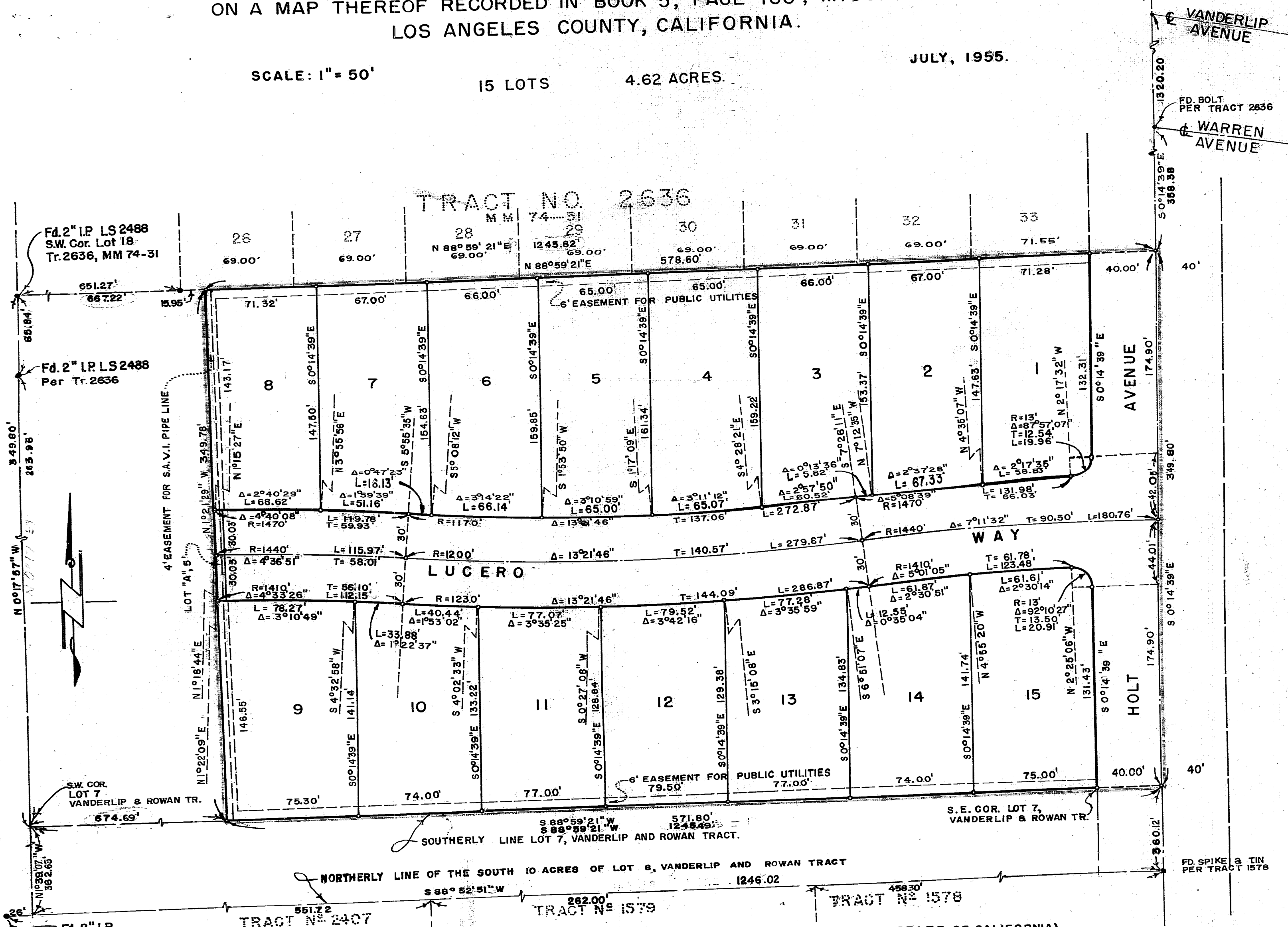
IN UNINCORPORATED TERRITORY OF COUNTY OF ORANGE, BEING A SUBDIVISION OF A PORTION OF LOT 7 OF THE VANDERLIP AND ROWAN TRACT AS SHOWN ON A MAP THEREOF RECORDED IN BOOK 5, PAGE 160, MISC. RECORDS OF LOS ANGELES COUNTY, CALIFORNIA.

SCALE: 1" = 50'

15 LOTS

4.62 ACRES.

JULY, 1955.



We, the undersigned, being all parties having any record title interest in the land covered by this map, do hereby consent to the preparation and recordation of said map as shown within the blue colored border line and we hereby offer for dedication LUCERO WAY and HOLT AVENUE for public use for highway purposes. Lot "A" is dedicated for highway purpose, said dedication to become effective at such time as the respective street is extended and dedicated in adjoining territory.

Dale S. Umphrey
Margaret Umphrey

STATE OF CALIFORNIA)
 COUNTY OF ORANGE) s.s.

On this 21st day of September, 1955, before me, *John M. Hoy*, a Notary Public in and for said County and State, personally appeared Dale S. Umphrey and Margaret Umphrey, known to me to be the persons described in and whose names are subscribed to the annexed instrument, and they acknowledged to me that they executed the same.

WITNESS my hand and official seal.

John M. Hoy
 Notary Public in and for
 said County and State.

My Commission expires March 22, 1956.

I, John M. Hoy, hereby certify that I am a Licensed Land Surveyor, No. 2326, of the State of California, and that this map consisting of one sheet correctly represents a true and complete survey made under my direction in July, 1955; that the monuments are of the character and occupy the positions indicated upon the map, and that said monuments are sufficient to enable the survey to be retraced.

John M. Hoy
 Licensed Land Surveyor

I, A. S. Koch, County Surveyor of Orange County, California, do hereby certify that I have examined this map and have found it to be substantially the same as the tentative map as filed, amended and approved by the Orange County Planning Commission; that all provisions of the Subdivision Map Act and County subdivision regulations have been complied with, and I am satisfied said map is technically correct.

Dated this 30 day of Sept., 1955

Alvin S. Koch
 County Surveyor

Bearings are based on HOLT AVENUE as being S 0°14'39"E as shown on Tr. No. 2636, MM 74-31.

Set 2" Pipe at all Tract corners.
 Set 1" Pipe at all Lot corners.
 Set PK Nail at all Street & Intersections.
 All pipe set bear copper tag marked L.S. 2326.

Found all points indicated by "—" unless otherwise noted.

STATE OF CALIFORNIA)
 COUNTY OF ORANGE) s.s.

I, L. H. Eckel, County Auditor of said County of Orange, do hereby certify that according to the records of my office there are no liens against the land shown on this map, or any part thereof, for unpaid State or County taxes or special assessments collected as taxes, except taxes or special assessments collected as taxes, not yet due and payable.

Dated this 21 day of Sept., 1955.

L. H. ECKEL

County Auditor.

By Helen Witt, Deputy

STATE OF CALIFORNIA)
 COUNTY OF ORANGE) s.s.

I, B. J. Smith, County Clerk of said County of Orange, do hereby certify that this map was presented for approval to the Board of Supervisors of said County of Orange, at a regular meeting thereof, held on the 25 day of Oct., 1955; and that thereupon said Board did, by order duly passed and entered, approve said map, and did accept on behalf of the public, the offer of dedication of LUCERO WAY and HOLT AVENUE as public highways.

Dated this 26 day of Oct., 1955

B. J. Smith
 County Clerk and ex-officio Clerk
 of the Board of Supervisors

By Wayne A. Deager, Deputy

STATE OF CALIFORNIA)
 COUNTY OF ORANGE) s.s.

I, B. J. Smith, County Clerk and ex-officio Clerk of the Board of Supervisors of Orange County, do hereby certify to the County Recorder of Orange County, that the provisions of the Subdivision Map Act have been complied with regarding deposits to secure the payment of taxes and assessments on the land covered by this map.

Dated this 26 day of Oct., 1955

B. J. Smith
 County Clerk and ex-officio Clerk
 of the Board of Supervisors

By Wayne A. Deager, Deputy

133358 INDEXED
 ACCEPTED
 AND
 FILED
 OCT 2 1955
 COUNTY OF ORANGE