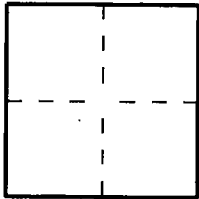


CORNER RECORD

Document Number 2006-12683City of Tustin County of Orange, CaliforniaBrief Legal Description Irvine Blvd. & Holt Avenue GPS 6034

CORNER TYPE

Government Corner ☐ Control ☒
Meander ☐ Property ☐
Rancho ☐ Other ☐

Date of Survey 3/30/06

COORDINATES (Optional)

N. _____
E. _____
Zone _____ NAD27 ☐ NAD83 ☐
NAD83 Epoch _____
Elevation _____
Vertical Datum: NGVD29 ☐ NAVD88 ☐
Units: Metric ☐ Imperial ☐ U.S. Survey ☒

Corner — Left as found ☒ Found and tagged ☐ Established ☐ Reestablished ☐ Rebuilt ☐

Identification and type of corner found; Evidence used to identify or procedure used to establish or reestablish the corner:

Found as described on the reverse of this sheet.

A description of the physical condition of the monument as found and as set or reset: _____

See Page 2

SURVEYOR'S STATEMENT

This Corner Record was prepared by me or under my direction in conformance with
the Professional Land Surveyors' Act on August 12, 2006

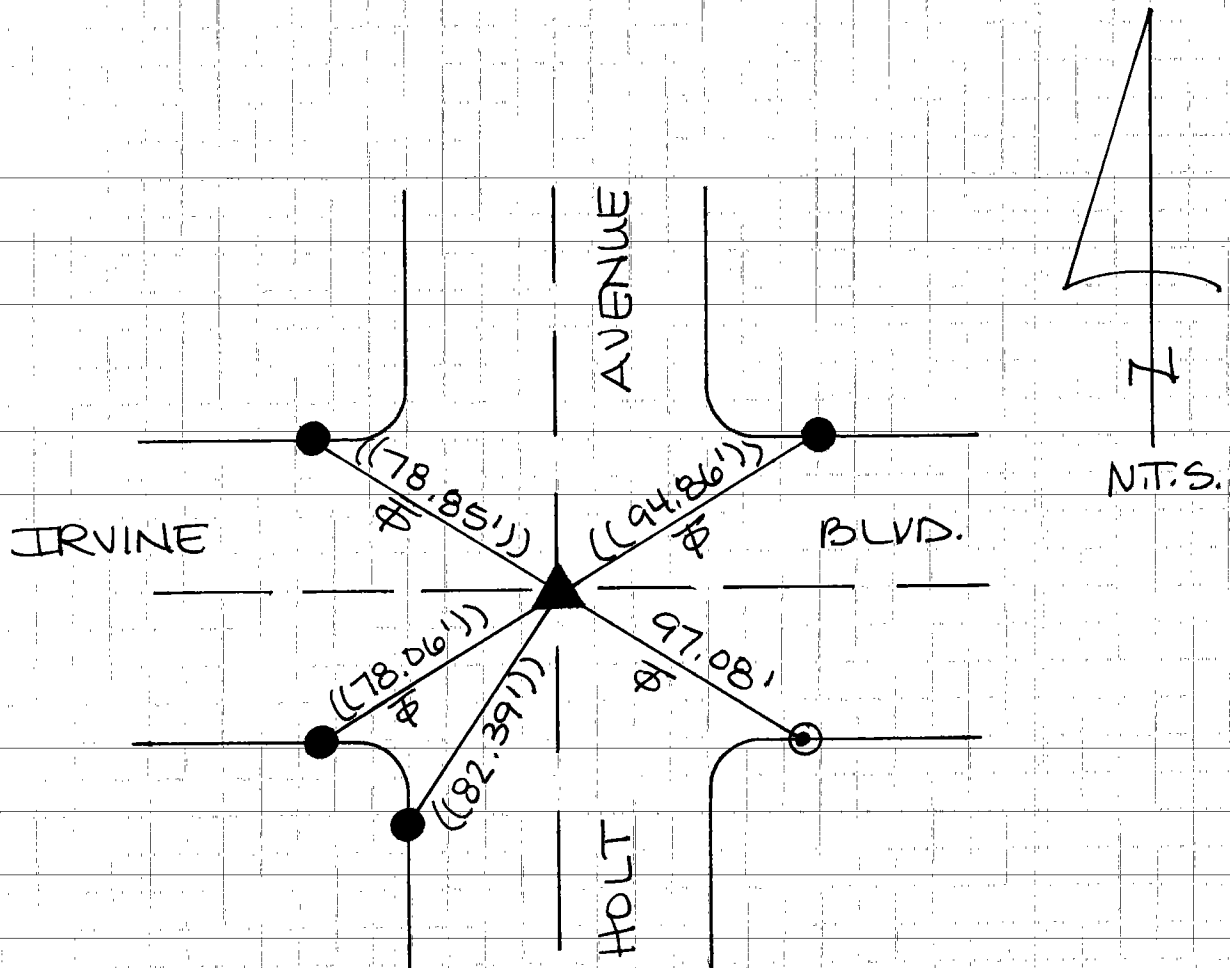
Signed [Signature] P.L.S. or R.C.E. No. L.S. 5411

COUNTY SURVEYOR'S STATEMENT

This Corner Record was received AUG 23 2006examined and filed SEP 25 2006Signed [Signature] P.L.S. or R.C.E. No. 7212Title DEPUTY COUNTY SURVEYOR

County Surveyor's Comment _____

R-1 = Co. OF DRANGE CR 2006-0622A.
 (()) = REC. & MEAS. DIST. PER R-1.
 Φ = TANGENT OVER



- ▲ FD. PUN. HEX BAR IN WELL MON. DN. 1.8' (PER R-1)
 MON. RAISED TO SURFACE AFTER CONSTR.
- FD. LIT L.S. 5411 IN T.C. (PER R-1).
- ⊙ SET LIT L.S. 5411 IN T.C.