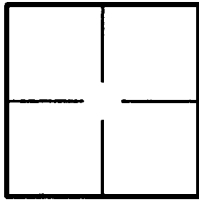


# CORNER RECORD

Document Number 2014-3058BCity of TUSTIN County of ORANGE, CaliforniaBrief Legal Description HOLT AVENUE; 157' ± N'LY OF PLAZA WAY

## CORNER TYPE

Government Corner ☐ Control ☒  
Meander ☐ Property ☐  
Rancho ☐ Other ☐

Date of Survey 9/09/2014

## COORDINATES (Optional)

N. \_\_\_\_\_  
E. \_\_\_\_\_  
Zone \_\_\_\_\_ NAD27 ☐ NAD83 ☐  
NAD83 Epoch \_\_\_\_\_  
Elevation \_\_\_\_\_  
Vertical Datum: NGVD29 ☐ NAVD88 ☐  
Units: Metric ☐ Imperial ☐ U.S. Survey ☒

Corner — Left as found ☐ Found and tagged ☐ Established ☐ Reestablished ☒ Rebuilt ☐

Identification and type of corner found; Evidence used to identify or procedure used to establish or reestablish corner:  
Found as described on the reverse of this sheet.

A description of the physical condition of the monument as found and as set or reset: \_\_\_\_\_  
See Page 2

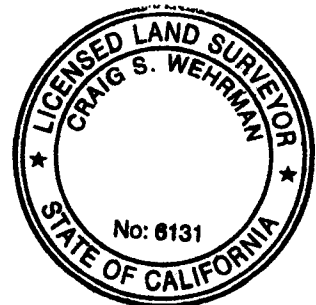
## SURVEYOR'S STATEMENT

This Corner Record was prepared by me or under my direction in conformance with  
the Professional Land Surveyors' Act on 11/13/2014

Signed [Signature] P.L.S. or R.C.E. No. L.S. 5411

## COUNTY SURVEYOR'S STATEMENT

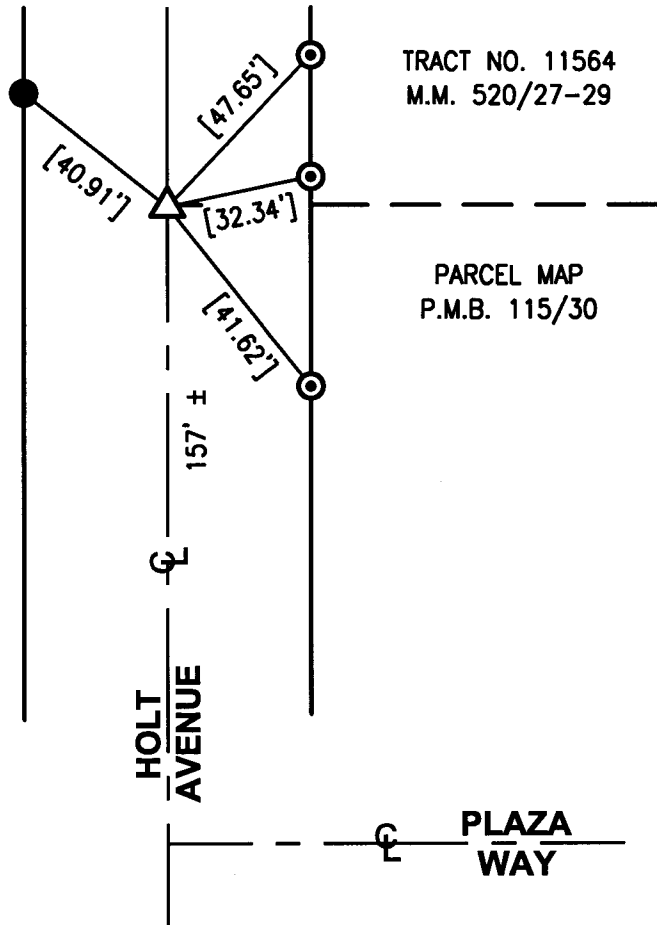
This Corner Record was received NOV 14 2014  
examined and filed DEC 01 2014

Signed [Signature] P.L.S. or R.C.E. No. 6131Title Chief Deputy Surveyor

County Surveyor's Comment \_\_\_\_\_

R-1 = COUNTY OF ORANGE CORNER RECORD 2014-1865 A

[ ] = RECORD & MEASURED DISTANCE PER R-1



△ FD NOTHING, SET GEAR SPK & W, STAMPED "LS 5411" PER TIES ON R-1, FLUSH, AFTER CONSTRUCTION.

● FD RAMSET NAIL IN T.C., PER R-1.

⊙ FD L, T & T "LS 5411" IN T.C. PER R-1.

THE PURPOSE OF THIS RECORD IS TO DOCUMENT THE PERPETUATION OF FOUND MONUMENT(S) PURSUANT TO THE PLS ACT SECTION 8771. NO CLAIM IS MADE REGARDING THE CORRECTNESS OF THE POSITION(S) OF SAID MONUMENT(S), NOR THE DIMENSIONAL RELATIONSHIP TO STREET CENTERLINES OR PROPERTY BOUNDARIES.

14-RJN-521