

SCALE 1" = 60'
ACREAGE: 17.610
No. LOTS: 54

DUPLICATE

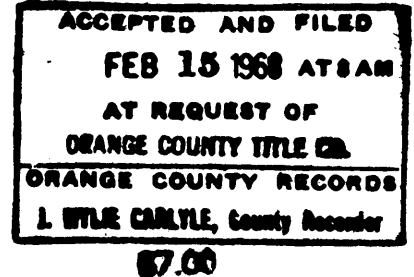
SHEET 1 OF 2 SHEETS

TRACT NO. 6450

8862

IN UNINCORPORATED TERRITORY OF ORANGE COUNTY, CALIFORNIA
BEING A SUBDIVISION OF A PORTION OF THE LAND ALLOTTED TO TEODOCIO
YORBA, AS DESCRIBED IN THE FINAL DECREE OF PARTITION OF THE RANCHO
SANTIAGO DE SANTA ANA, WHICH WAS ENTERED SEPTEMBER 12, 1868 IN
BOOK 8, PAGE 410 OF JUDGMENTS OF THE DISTRICT COURT OF THE 17TH
JUDICIAL DISTRICT IN AND FOR LOS ANGELES COUNTY, CALIFORNIA.

FRANK W. RICHARDSON L.S. 2921
OCTOBER 1967



WE, THE UNDERSIGNED, BEING ALL PARTIES HAVING ANY RECORD TITLE INTEREST IN THE LAND COVERED BY THIS MAP, DO HEREBY CONSENT TO THE PREPARATION AND RECORDATION OF SAID MAP AS SHOWN WITHIN THE BLUE COLORED BORDER LINE AND WE HEREBY OFFER FOR DEDICATION TO THE PUBLIC FOR HIGHWAY PURPOSES GALY STREET, SHERBROOK DRIVE, CHATHAM DRIVE, AMBERWICK LANE AND PROSPECT AVENUE. WE ALSO OFFER FOR DEDICATION TO THE COUNTY OF ORANGE, ALL VEHICULAR ACCESS RIGHTS TO PROSPECT AVENUE EXCEPT AT STREET INTERSECTION AND THE 10' EASEMENT FOR DRAINAGE PURPOSES AS SHOWN ON SAID MAP.

TUSTIN OAKS NO. 2, A LIMITED PARTNERSHIP
BY: SMITH DEVELOPMENT COMPANY, A CORPORATION, GENERAL PARTNER

Gilbert H. Smith, pres.
GILBERT H. SMITH, PRESIDENT

STATE OF CALIFORNIA } S.S.
COUNTY OF ORANGE

ON THIS 6th DAY OF FEBRUARY, 1968, BEFORE ME WILLIAM H. BRUNS
A NOTARY PUBLIC IN AND FOR SAID COUNTY AND STATE, PERSONALLY APPEARED
GILBERT H. SMITH KNOWN TO ME TO BE PRESIDENT OF SMITH DEVELOPMENT
COMPANY, A CORPORATION, THE CORPORATION THAT EXECUTED THE WITHIN
INSTRUMENT, AND KNOWN TO ME TO BE THE PERSON WHO EXECUTED THE WITHIN
INSTRUMENT ON BEHALF OF SAID CORPORATION, SAID CORPORATION BEING
KNOWN TO ME TO BE THE GENERAL PARTNER OF TUSTIN OAKS NO. 2, A LIMITED
PARTNERSHIP, THE LIMITED PARTNERSHIP THAT EXECUTED THE WITHIN
INSTRUMENT, AND HE ACKNOWLEDGED TO ME THAT SUCH CORPORATION EXECUTED
THE SAME AS SUCH GENERAL PARTNER AND THAT SUCH LIMITED PARTNERSHIP
EXECUTED THE SAME.

MY COMMISSION EXPIRES

William H. Bruns
NOTARY PUBLIC IN AND FOR SAID
COUNTY AND STATE

MAY 24, 1969

SIGNATURE OMISSION:

PURSUANT TO SECTION 11587 OF THE BUSINESS AND PROFESSION CODE,
THE FOLLOWING SIGNATURE HAS BEEN OMITTED:

1. SANTA ANA VALLEY IRRIGATION COMPANY, OWNER OF EASEMENTS FOR PIPE LINES BY DEED RECORDED IN BOOK 456, PAGE 360 OF DEEDS, AND BY DEED RECORDED IN BOOK 7936, PAGE 764 OF OFFICIAL RECORDS AND BY DEED RECORDED IN BOOK 7936, PAGE 766 OF OFFICIAL RECORDS.

A SOILS REPORT DATED OCTOBER 23, 1967, WAS PREPARED BY
KENNETH G. OSBORNE, R.C.E. 14340.

I, FRANK W. RICHARDSON, HEREBY CERTIFY THAT I AM A LICENSED SURVEYOR NO. 2921, OF THE STATE OF CALIFORNIA, AND THAT THIS MAP CONSISTING OF 2 SHEETS CORRECTLY REPRESENTS A TRUE AND COMPLETE SURVEY MADE UNDER MY DIRECTION IN SEPTEMBER, 1967; THAT THE MONUMENTS ARE OF THE CHARACTER AND OCCUPY THE POSITIONS INDICATED OR WILL BE SET IN SUCH POSITIONS WITHIN NINETY DAYS AFTER THE ACCEPTANCE OF IMPROVEMENTS AND THAT SAID MONUMENTS ARE SUFFICIENT TO ENABLE THE SURVEY TO BE RETRACED.

Frank W. Richardson
LICENSED SURVEYOR NO. 2921

I, ALLEN S. KOCH, COUNTY SURVEYOR OF ORANGE COUNTY, CALIFORNIA, DO HEREBY CERTIFY THAT I HAVE EXAMINED THIS MAP AND HAVE FOUND IT TO BE SUBSTANTIALLY THE SAME AS THE TENTATIVE MAP AS FILED, AMENDED AND APPROVED BY THE ORANGE COUNTY PLANNING COMMISSION; THAT ALL PROVISIONS OF THE SUBDIVISION MAP ACT AND COUNTY SUBDIVISION REGULATIONS HAVE BEEN COMPLIED WITH AND I AM SATISFIED SAID MAP IS TECHNICALLY CORRECT.

DATED THIS 14th DAY OF Feb, 1968

ALLEN S. KOCH
COUNTY SURVEYOR

BY: Robert V. Wise
DEPUTY

STATE OF CALIFORNIA } S.S.
COUNTY OF ORANGE

I, W. E. ST JOHN, COUNTY CLERK OF ORANGE COUNTY, DO HEREBY CERTIFY TO THE COUNTY RECORDER OF ORANGE COUNTY THAT THE PROVISIONS OF THE SUBDIVISION MAP ACT HAVE BEEN COMPLIED WITH REGARDING DEPOSITS TO SECURE PAYMENTS OF TAXES AND SPECIAL ASSESSMENTS COLLECTED AS TAXES ON THE LAND COVERED BY THIS MAP.

DATED THIS 15th DAY OF February, 1968

W. E. ST JOHN
COUNTY CLERK OF ORANGE COUNTY

BY: Francis Reyer
DEPUTY

STATE OF CALIFORNIA } S.S.
COUNTY OF ORANGE

I, W. E. ST JOHN, COUNTY CLERK AND EX-OFFICIO CLERK OF THE BOARD OF SUPERVISORS OF ORANGE COUNTY, DO HEREBY CERTIFY THAT THIS MAP WAS PRESENTED FOR APPROVAL TO THE BOARD OF SUPERVISORS OF THE SAID COUNTY OF ORANGE AT A REGULAR MEETING THEREOF HELD ON THE 15th DAY OF February, 1968, AND THAT THEREUPON SAID BOARD DID BY AN ORDER DULY PASSED AND ENTERED, APPROVE SAID MAP AND DID ACCEPT ON BEHALF OF THE PUBLIC THE OFFER OF DEDICATION OF GALY STREET, SHERBROOK DRIVE, CHATHAM DRIVE, AMBERWICK LANE AND PROSPECT AVENUE FOR HIGHWAY PURPOSES AND DID ACCEPT ON BEHALF OF THE COUNTY OF ORANGE THE OFFER OF DEDICATION OF ALL VEHICULAR ACCESS RIGHTS TO PROSPECT AVENUE AS DEDICATED AND THE 10' EASEMENT FOR DRAINAGE PURPOSES AS DEDICATED.

DATED THIS 15th DAY OF February, 1968

W. E. ST JOHN
COUNTY CLERK AND EX-OFFICIO CLERK
OF THE BOARD OF SUPERVISORS

BY: Francis Reyer
DEPUTY

STATE OF CALIFORNIA } S.S.
COUNTY OF ORANGE

I, DON S. MOZLEY, COUNTY TAX COLLECTOR AND REDEMPTION OFFICER OF SAID COUNTY OF ORANGE, DO HEREBY CERTIFY THAT ACCORDING TO THE RECORDS OF MY OFFICE, THERE ARE NO LIENS AGAINST THE LAND SHOWN ON THIS MAP OR ANY PART THEREOF FOR UNPAID STATE OR COUNTY TAXES OR SPECIAL ASSESSMENTS COLLECTED AS TAXES.

DATED THIS 6th DAY OF February, 1968

DON S. MOZLEY
COUNTY TAX COLLECTOR AND
REDEMPTION OFFICER OF
ORANGE COUNTY

BY: W. E. Markle
DEPUTY

BASIS OF BEARINGS:
N 0° 14' 10" W FOR THE CENTERLINE OF PROSPECT AVENUE PER TRACT NO. 4170, M.M. 150/18-19, RECORDS OF ORANGE COUNTY, CALIFORNIA.

MONUMENT NOTES

1. SET 2" I. P. TAGGED L.S. 2921 AT TRACT BOUNDARY CORNERS, UNLESS OTHERWISE NOTED.
2. SET 1" I. P. TAGGED L.S. 2921 AT ALL LOT CORNERS, UNLESS OTHERWISE NOTED. ALL LOT CORNERS ABUTTING PROSPECT AVENUE SHALL BE MARKED BY 1" I. P. TAGGED L. S. 2921, SET ON THE LOT LINE OR RADIAL LINE 2 FEET FROM TRUE LOT CORNERS.
3. SET 8" SPIKES AT ALL INTERSECTIONS OF STREET CENTERLINES, AT BEGINNING AND END OF CURVES OF STREET CENTERLINES AT POINTS OF INTERSECTIONS OF TANGENTS WHEN SUCH POINTS FALL WITHIN THE PAVED ROADWAY AT TERMINATIONS OF STREET CENTERLINES AND ALL OTHER POINTS OF CONTROL OF STREET CENTERLINES, UNLESS OTHERWISE NOTED.
4. TIES TO CENTERLINE MONUMENTS WILL BE MADE AND A COPY OF SAID TIES WILL BE FURNISHED TO THE COUNTY SURVEYOR.
5. SET TYPE "A" O.C.S. MON. SHOWN THUSLY Δ UNLESS OTHERWISE NOTED.

SCALE 1" = 60'

NOTE:
FOR BASIS OF BEARINGS AND
MONUMENT NOTES: SEE SHEET N^o 1.

DUPLICATE

TRACT NO. 6450

IN UNINCORPORATED TERRITORY, COUNTY OF ORANGE, CALIFORNIA
54 LOTS 17.610 ACRES

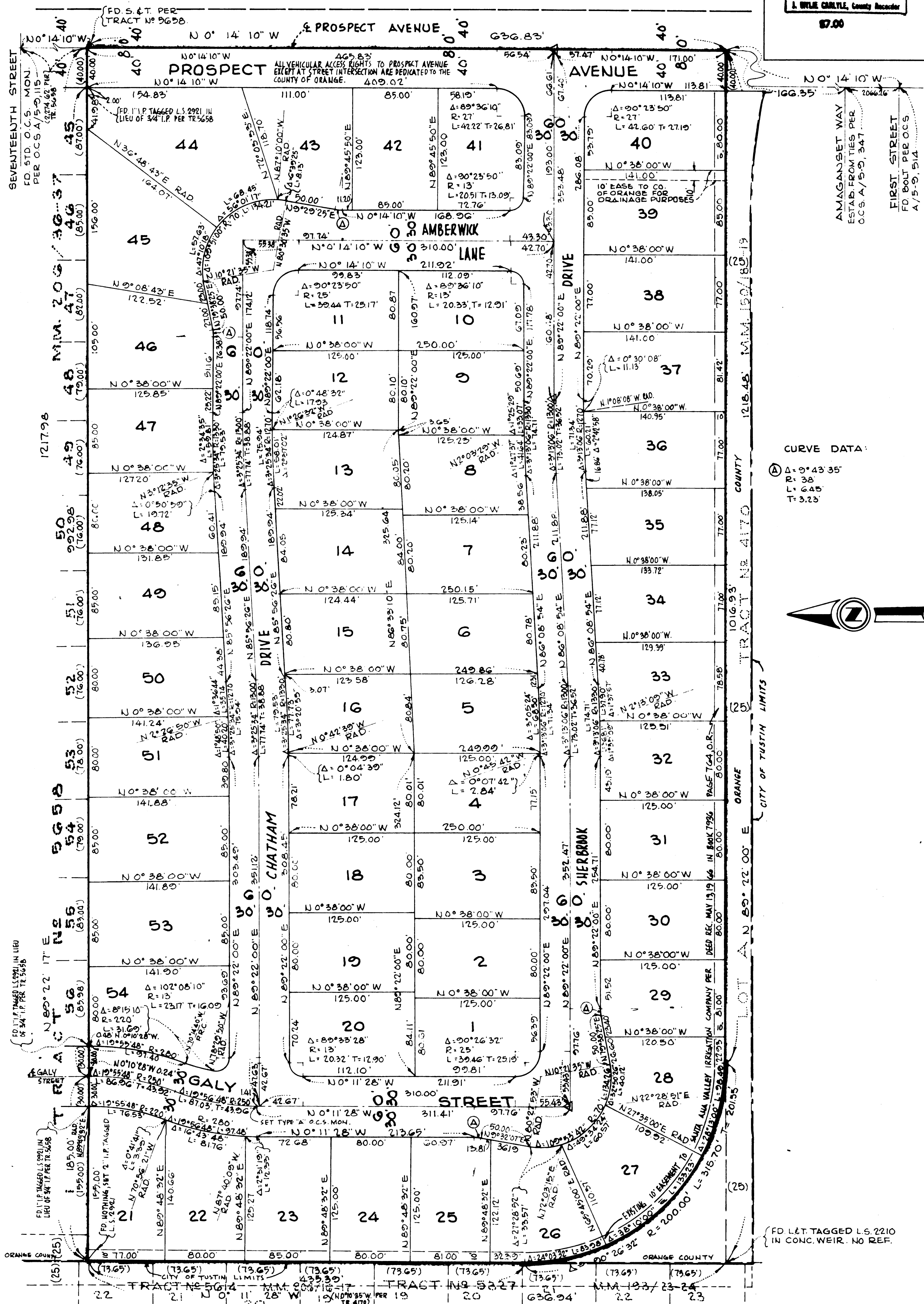
FRANK W. RICHARDSON, L.S. 2921
OCTOBER, 1967

SHEET 2 OF 2 SHEETS

8362

ACCEPTED AND FILED
FEB 15 1968 ATSAM
AT REQUEST OF
ORANGE COUNTY TITLE CO.
ORANGE COUNTY RECORDS
J. WYLE CARLYLE, County Recorder

17.00



CURVE DATA:
 $\Delta = 9^\circ 43' 35''$
 $R = 38'$
 $L = 6.45'$
 $T = 3.73'$



{ FD. L&T. TAGGED L.S. 2210
IN CONC. WEIR. NO REF.