

SCALE 1"=60
ACREAGE: 17.738
No. LOTS: 56

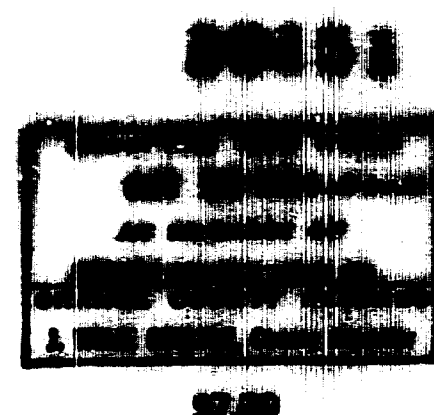
ORIGINAL

SHEET 1 OF 2 SHEETS

TRACT NO. 5658

In unincorporated territory of Orange County, California
Being a subdivision of a portion of the land allotted to Teodocia
Yorba, as described in the Final Decree of Partition of the Rancho
Santiago de Santa Ana, a certified copy of which was recorded
September 12, 1868 in Book "B", Page 410, of Judgments of the
District Court of the 17th Judicial District, in and for Los Angeles
County, California.

FRANK W. RICHARDSON L.S. 2921
JULY, 1964



We, the undersigned, being all parties having any record title interest in the land covered by this map, do hereby consent to the preparation and recordation of said map as shown within the blue colored border line and we hereby offer for dedication: Prospect Avenue, Galy Street, Orange Tree Lane, Norwood Park, for public use as public highways, we hereby offer for dedication all vehicular access rights to Prospect Avenue except at street intersections to the County of Orange.

WE HEREBY OFFER FOR DEDICATION THE 15' EASEMENT FOR FLOOD CONTROL PURPOSES TO THE ORANGE COUNTY FLOOD CONTROL DISTRICT, AS SHOWN ON SAID MAP.

I, FRANK W. RICHARDSON, hereby certify that I am a Licensed Surveyor No. 2921, of the State of California, and that this map consisting of 2 sheets correctly represents a true and complete survey made under my direction in June, 1964; that the monuments are of the character and occupy the positions indicated or will be set in position one (1) year from the date of recording, and that said monuments are sufficient to enable the survey to be retraced.

Frank W. Richardson
Licensed Surveyor No. 2921

I, ALLEN S. KOCH, County Surveyor of Orange County, California, do hereby certify that I have examined this map and have found it to be substantially the same as the tentative map as filed, amended and approved by the Orange County Planning Commission; that all provisions of the Subdivision Map Act and County Subdivision Regulations have been complied with and I am satisfied said map is technically correct.

Dated this 16th day of Sept, 1964

ALLEN S. KOCH
County Surveyor

By: *Robert U. Wise*
Deputy

State of California } s.s.
County of Orange }

I, W. E. ST JOHN, County Clerk of Orange County, do hereby certify to the County Recorder of Orange County that the provisions of the Subdivision Map Act have been complied with regarding deposits to secure payments of taxes and special assessments of the land covered by this map.

Dated this 23rd day of SEPTEMBER, 1964

W. E. ST JOHN
County Clerk of Orange County

By: *Sally L. Seary*
Deputy

State of California } s.s.
County of Orange }

I, W. E. ST JOHN, County Clerk and Ex-Officio Clerk of the Board of Supervisors of Orange County, do hereby certify that this map was presented for approval to the Board of Supervisors of the said County of Orange at a regular meeting thereof held on the 22nd day of SEPTEMBER, 1964, and that thereupon said Board did by an order duly passed and entered, approve said map and did accept on behalf of the public the offer of dedication: Prospect Avenue, Galy Street, Orange Tree Lane, Norwood Park and did accept all vehicular access rights as dedicated.

Dated this 18th day of SEPTEMBER, 1964

W. E. ST JOHN
County Clerk and Ex-Officio Clerk
of the Board of Supervisors

By: *Sally L. Seary*
Deputy

State of California } s.s.
County of Orange }

I, DON S. MOZLEY, County Tax Collector and Redemption Officer of said County of Orange, do hereby certify that according to the records of my office, there are no liens against the land shown on this map or any part thereof for unpaid State or County taxes or special assessments collected as taxes, except taxes and special assessments collected as taxes not yet due and payable.

Dated this 5th day of August, 1964

DON S. MOZLEY
County Tax Collector and
Redemption Officer of Orange
County

By: *W. E. Markle*
Deputy

State of California } s.s.
County of Orange }

I, W. E. ST JOHN, County Clerk and ex-officio clerk of the Board of Supervisors of the Orange County Flood Control District do hereby certify that this map was presented for approval to the Board of Supervisors of said District at the regular meeting and that thereupon said Board did, by an order duly passed and entered, approve said map and did accept the offer of dedication of the easement for flood control purposes as shown on said map for the Orange County Flood Control District.

Dated this 23rd day of SEPTEMBER, 1964 *W. E. ST JOHN*
County Clerk and Ex-Officio
Clerk of the Board of Super-
visors of the Orange County
Flood Control District

By: *Sally L. Seary*
Deputy

BASIS OF BEARINGS:

N 0° 14' 10" W for the center line of Prospect Avenue per Tract No. 3798, Miscellaneous Maps, book 142, pages 20-22.

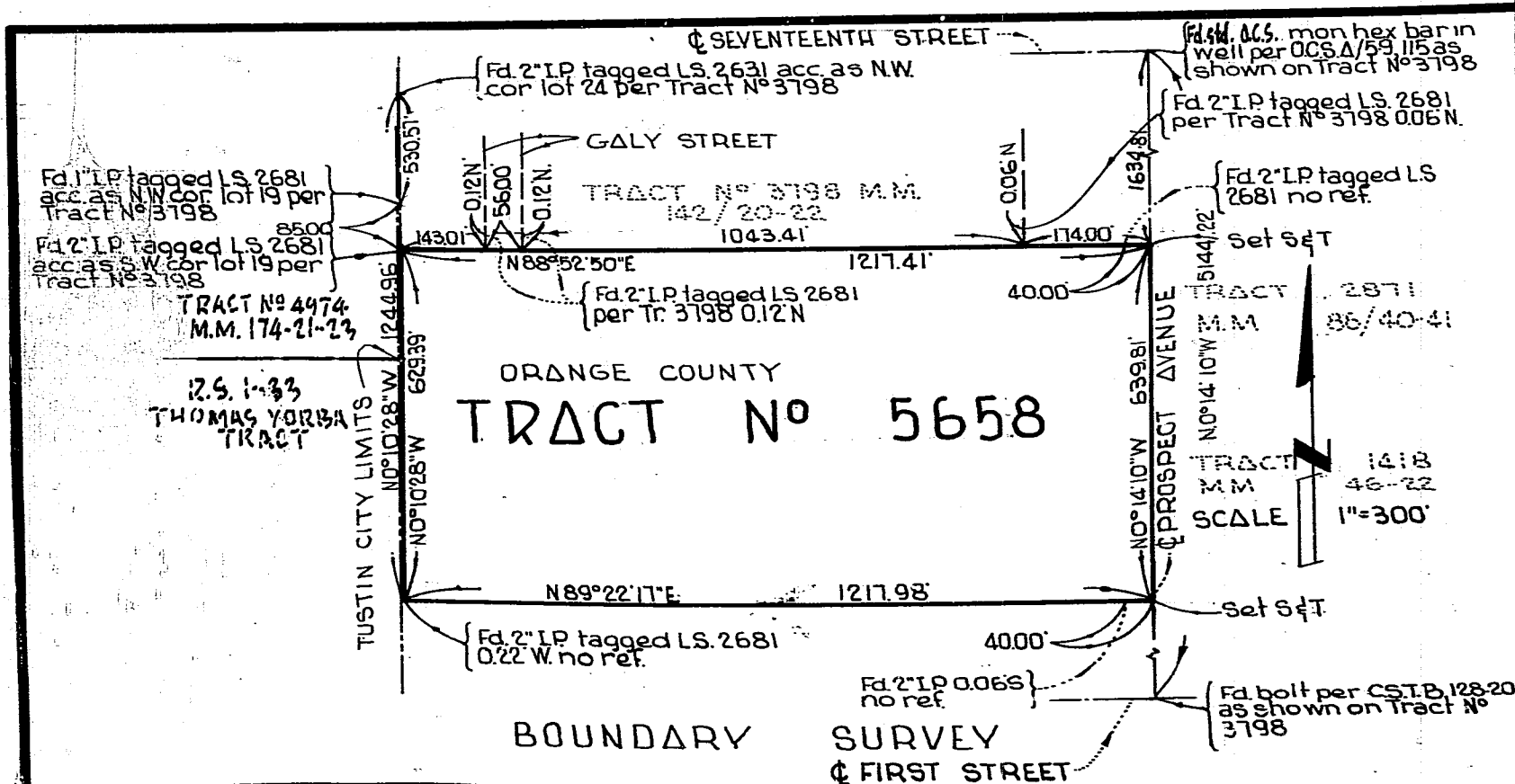
MONUMENT NOTES:

- Set 2" I.P. tagged L.S. 2921 4" below surface at all tract corners, unless otherwise noted.
- Set 3/4" I.P. tagged L.S. 2921 at all lot corners, MONUMENTS OFFSET FROM LOT CORNERS, shown thusly.
- Set 2" I.P. tagged L.S. 2921 in subgrade 4" below surface and s & t on surface at all intersections of street center lines, at terminations beginning and end of curves of street center lines, at terminations of street center lines, and all other points of control of street center lines.
- Ties to center line monuments will be made and a copy of said ties will be furnished to the County Surveyor.

SIGNATURE OMISSION:

Pursuant to the Provisions of Section 11587 of the Business and Profession Code the following signature has been omitted:

- The interest of Santa Ana Valley Irrigation Company, owner of an easement recorded in Book 456, page 360 of Deeds, and shown on Record of Survey Book 31, page 47.



SCALE 1" = 60'

FOR BOUNDARY SURVEY, MONUMENT NOTES,
AND BASIS OF BEARINGS SEE SHEET NO. 1

TRACT NO. 5658

IN UNINCORPORATED TERRITORY OF ORANGE COUNTY, CALIFORNIA.
56 LOTS
FRANK W. RICHARDSON L.S. 2921
JULY, 1964

SHEET 2 OF 2 SHEETS

