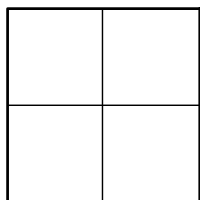


CORNER RECORD

Agency Index _____

Document Number _____

CR 2022-0388

City of UNINCORPORATED TERRITORYCounty of ORANGE, CaliforniaBrief Legal Description ALONG LA COLINA DR: AT THE INTERSECTION OF WOODLAWN AVE, AND AT THE NW'LY BDY OF TRACT 2560 +/- 510' NW'LY OF SAID INTERSECTION**CORNER TYPE**

- ☐ Government Corner ☐ Control
☐ Meander ☐ Property
☐ Rancho ☒ Other

Date of Survey 01-19-2022**COORDINATES (Optional)**

N. _____ E. _____

Elevation _____

Units Metric ☐ U.S. Survey Foot ☒

Horizontal Datum _____

Zone _____ Epoch Date _____

Vertical Datum _____

- ☐ Complies with Public Resources Code §§8801-8819
☐ Complies with Public Resources Code §§8890-8902

PLS Act Ref: ☐ 8765(d)☒ 8771☐ 8773☐ Other: _____Corner/ ☒ Left as found☐ Established☐ Rebuilt☐ Pre-ConstructionMonument: ☐ Found and tagged☒ Reestablished☒ Referenced☒ Post-Construction

Narrative of corner identified and monument as found, set, reset, replaced, or removed:

☒ See sheet #2 for description (s):

THE PURPOSE OF THIS RECORD IS TO DOCUMENT THE PERPETUATION OF FOUND MONUMENT(S) PURSUANT TO THE PLS ACT SECTION 8771. NO CLAIM IS MADE AS TO THE RELATIONSHIP OF THE POINTS SHOWN HEREON TO TRUE BOUNDARY LOCATIONS. RIGHT OF WAY, PARCEL, OR LOT LINES, OR ANY OTHER DATA RELATED TO DELINEATION OF PROPERTY RIGHTS ARE DISPLAYED FOR GRAPHICAL REPRESENTATION ONLY.

BEARINGS SHOWN HEREON ARE ASSUMED AND ARE DISPLAYED FOR ANGULAR RELATIONSHIP ONLY.

MEASURED DISTANCES SHOWN HEREON ARE GRID DISTANCES. TO OBTAIN A GROUND DISTANCE, MULTIPLY A GRID DISTANCE BY 1.00002225.

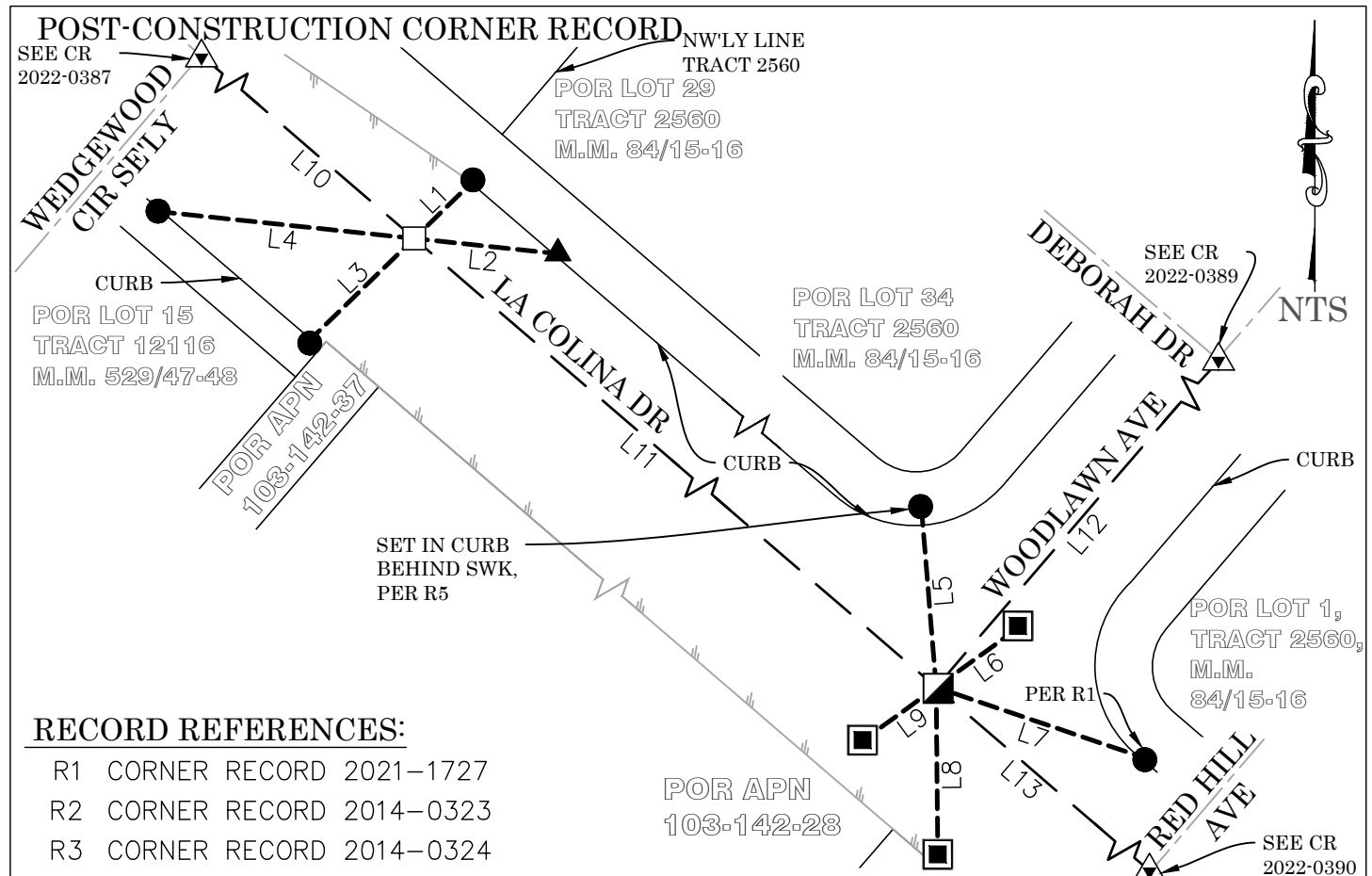
RECORD DISTANCES SHOWN HEREON ARE AS THEY APPEAR ON THE DOCUMENT OF RECORD. DISTANCES MAY BE EITHER GRID OR GROUND, AS PER SAID RECORD.

SURVEYOR'S STATEMENT

This Corner Record was prepared by me or under my direction in conformance with

the Professional Land Surveyors' Act on 3-17-2022Signed Roy Macias (P.L.S.) or R.C.E. No. 9501**COUNTY SURVEYOR'S STATEMENT**This Corner Record was received March 17, 2022and examined and filed May 23, 2022Signed Kevin R. Hills (P.L.S.) or R.C.E. No. 6617Title COUNTY SURVEYOR

County Surveyor's Comment _____



RECORD REFERENCES:

- | | | |
|----|--|-----------|
| R1 | CORNER RECORD | 2021-1727 |
| R2 | CORNER RECORD | 2014-0323 |
| R3 | CORNER RECORD | 2014-0324 |
| R4 | CORNER RECORD | 2015-1158 |
| R5 | OCS UNFILED FIELD NOTES DATED
FEBRUARY 11, 2015 | |

LEGEND:

- | | | |
|-------------------------|------------------------|---------------------------|
| — — — | REF LINE 1: | APPARENT
CENTERLINE |
| — — — | REF LINE 2: | TIE LINES |
| — — | REF LINE 3: | MEAS BETWEEN
MONUMENTS |
| <u> </u> <u> </u> | REF LINE 4: | EDGE OF PAVEMENT |
| OCS | ORANGE COUNTY SURVEYOR | |

MONUMENT NOTES:

- ☐ SEARCHED, FOUND NOTHING; SET SPIKE & 1-1/2" SS WSHR STMPD "OCS", FLUSH IN AC, PER TIES SHOWN HEREON
- ☒ FD GEAR SPIKE & 1-1/2" BR WSHR STMPD "LS 5411", PER R4, FLUSH IN AC
- ☒ FD LEAD & 3/4" BR TAG STMPD "OCS TIE" ON TOP OF CONC CURB, PER R2 UNLESS OTHERWISE NOTED
- FD LEAD & TACK ON TOP OF CONC CURB, PER R2; ADDED 3/4" BR TAG STMPD "OCS TIE"
- ☒ FD LEAD & 3/4" BR TAG STMPD "OCS TIE", FLUSH IN CONC, PER R3
- FD MON AS DESCRIBED ON ADJACENT CORNER RECORD

LINE TABLE			
LINE #	MEAS & REC BEARING	MEAS & REC DISTANCE	REF
L1	N45°49'50"E	18.28'	R1
L2	N83°57'52"W	31.97'	R1
L3	N45°47'21"E	32.37'	R1
L4	N83°59'11"W	56.65'	R1
L5	N04°39'54"W	39.89'	R1
L6	N54°08'14"E	22.21'	R1
L7	N71°17'23"W	48.48'	R1
L8	N00°33'14"W	37.79'	R1
L9	N54°01'27"E	20.04'	R1
L10	N49°19'06"W	110.78'	R1
L11	N49°19'00"W	510.03'	R1
L12	N40°37'16"E	309.99'	R1
L13	N49°18'37"W	810.16'	R1