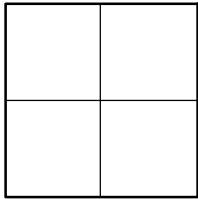


CORNER RECORD

Agency Index _____

Document Number _____

CR 2022-3442

City of UNINCORPORATED TERRITORYCounty of ORANGE, CaliforniaBrief Legal Description AT THE APPARENT INTERSECTION OF FAIRHAVEN AVE & PROSPECT AVE**CORNER TYPE**

- ☐ Government Corner ☒ Control
☐ Meander ☐ Property
☐ Rancho ☐ Other

Date of Survey 09/16/2022**COORDINATES (Optional)**

N. _____ E. _____
Elevation _____
Units _____ Metric ☐ U.S. Survey Foot ☒
Horizontal Datum _____
Zone _____ Epoch Date _____
Vertical Datum _____

- ☐ Complies with Public Resources Code §§8801-8819
☐ Complies with Public Resources Code §§8890-8902

PLS Act Ref: ☐ 8765(d) ☒ 8771 ☐ 8773 ☐ Other: _____

Corner/
Monument: ☒ Left as found ☐ Established ☐ Rebuilt ☐ Pre-Construction
☐ Found and tagged ☐ Reestablished ☐ Referenced ☒ Post-Construction

Narrative of corner identified and monument as found, set, reset, replaced, or removed:

☒ See sheet #2 for description (s):

THE PURPOSE OF THIS RECORD IS TO DOCUMENT THE PERPETUATION OF FOUND MONUMENT(S) PURSUANT TO THE PLS ACT SECTION 8771. NO CLAIM IS MADE AS TO THE RELATIONSHIP OF THE POINTS SHOWN HEREON TO TRUE BOUNDARY LOCATIONS. RIGHT OF WAY, PARCEL, OR LOT LINES, OR ANY OTHER DATA RELATED TO DELINEATION OF PROPERTY RIGHTS ARE DISPLAYED FOR GRAPHICAL REPRESENTATION ONLY.

BEARINGS SHOWN HEREON ARE ASSUMED AND ARE DISPLAYED FOR ANGULAR RELATIONSHIP ONLY.

MEASURED DISTANCES SHOWN HEREON ARE GRID DISTANCES, DERIVED BY INVERSE FROM POSITIONS ESTABLISHED BY A FULLY REDUNDANT LEAST SQUARES NETWORK ADJUSTMENT. ALL POINTS WERE EITHER TRAVERSED THROUGH OR DOUBLE DETERMINED, PER CHAPTERS 5 & 11 OF THE OC SURVEY STANDARDS MANUAL TO OBTAIN A GROUND DISTANCE, MULTIPLY A GRID DISTANCE BY 1.00002333.

RECORD DISTANCES SHOWN HEREON ARE AS THEY APPEAR ON THE DOCUMENT OF RECORD. DISTANCES MAY BE EITHER GRID OR GROUND, AS PER SAID RECORD.

SURVEYOR'S STATEMENT

This Corner Record was prepared by me or under my direction in conformance with

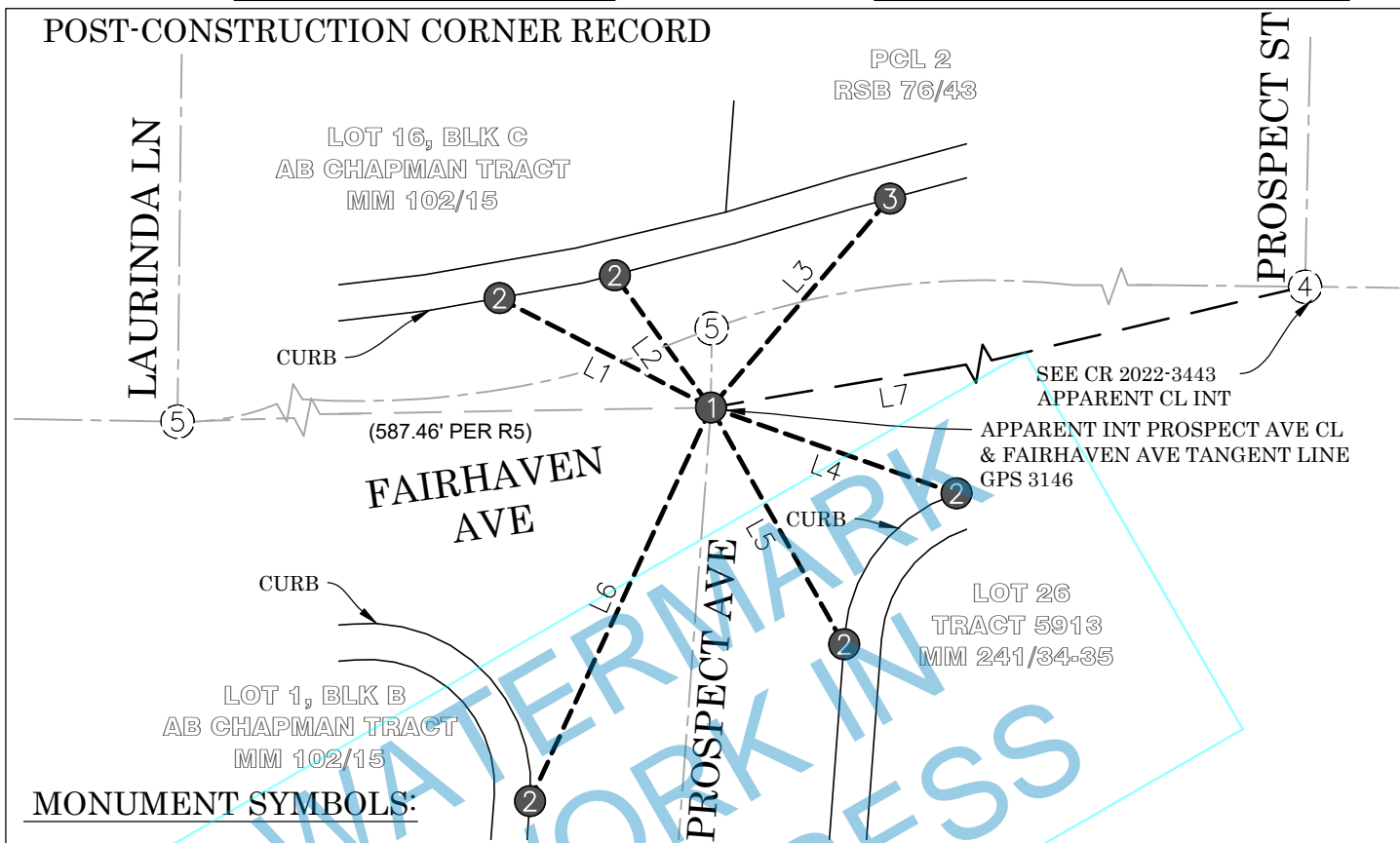
the Professional Land Surveyors' Act on 02-14-2023Signed Elliott Medina (P.L.S.) or R.C.E. No. 9294**COUNTY SURVEYOR'S STATEMENT**

This Corner Record was received _____

and examined and filed _____

Signed _____ (P.L.S.) or R.C.E. No. 8970Title DEPUTY COUNTY SURVEYOR

County Surveyor's Comment PRIOR TO CONSTRUCTION, A 2-1/4" DISK STAMPED "OCS 10-73" WAS FOUND IN A MONUMENT WELL. DUE TO TRAFFIC SAFETY CONCERNS, THE WELL WAS NOT OPENED AFTER CONSTRUCTION, BUT ALL TIE POINTS WERE VERIFIED USING THE ORIGINAL PROJECT CONTROL NETWORK, AS SHOWN ON PAGE 2 OF THIS DOCUMENT

POST-CONSTRUCTION CORNER RECORD**LINE TABLE**

LINE #	RECORD BEARING	RECORD DISTANCE	REF
L1	N44°52'41"W	61.86'	R1
L2	N21°20'19"W	52.29'	R1
L3	N31°24'31"E	76.34'	R1
L4	N87°46'48"E	54.05'	R1
L5	N44°48'51"W	42.54'	R1
L6	N30°15'48"E	73.76'	R1
L7	N/A	414.28'	R1

NTS