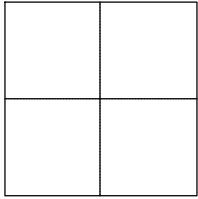


CORNER RECORD

Agency Index 2021PW-CM0002 (EQ20574)Document Number 2021-0741City of UNINCORPORATED TERRITORYCounty of ORANGE, CaliforniaBrief Legal Description INTERSECTION OF FAIRHAVEN AVENUE, ESPLANADE STREET, AND
ETON PLACE

CORNER TYPE

- ☐ Government Corner ☒ Control
☐ Meander ☐ Property
☐ Rancho ☐ Other

Date of Survey 9/23/2020

COORDINATES (Optional)

N. _____ E. _____

Elevation _____

Units Metric ☐ U.S. Survey Foot ☒

Horizontal Datum _____

Zone _____ Epoch Date _____

Vertical Datum _____

☐ Complies with Public Resources Code §§8801-8819☐ Complies with Public Resources Code §§8890-8902PLS Act Ref: ☐ 8765(d) ☒ 8771 ☐ 8773 ☐ Other:Corner/
Monument: ☒ Left as found ☐ Established ☐ Rebuilt ☒ Pre-Construction
☒ Found and tagged ☐ Reestablished ☒ Referenced ☐ Post-Construction

Narrative of corner identified and monument as found, set, reset, replaced, or removed:

☒ See sheet #2 for description (s):

NOTES:

THE PURPOSE OF THIS RECORD IS TO DOCUMENT THE PERPETUATION OF FOUND MONUMENT(S) PURSUANT TO THE PLS ACT SECTION 8771. NO CLAIM IS MADE AS TO THE RELATIONSHIP OF THE POINTS SHOWN HEREON TO TRUE BOUNDARY LOCATIONS, RIGHT OF WAY, PARCEL, OR LOT LINES, OR ANY OTHER DATA RELATED TO DELINEATION OF PROPERTY RIGHTS ARE DISPLAYED FOR GRAPHICAL REPRESENTATION ONLY.

BEARINGS SHOWN HEREON ARE ASSUMED AND ARE DISPLAYED FOR ANGULAR RELATIONSHIP ONLY.MEASURED DISTANCES SHOWN HEREON ARE GROUND DISTANCES.RECORD DISTANCES SHOWN HEREON ARE AS THEY APPEAR ON THE DOCUMENT OF RECORD.

SURVEYOR'S STATEMENT

This Corner Record was prepared by me or under my direction in conformance with
the Professional Land Surveyors' Act on DECEMBER 22, 2020

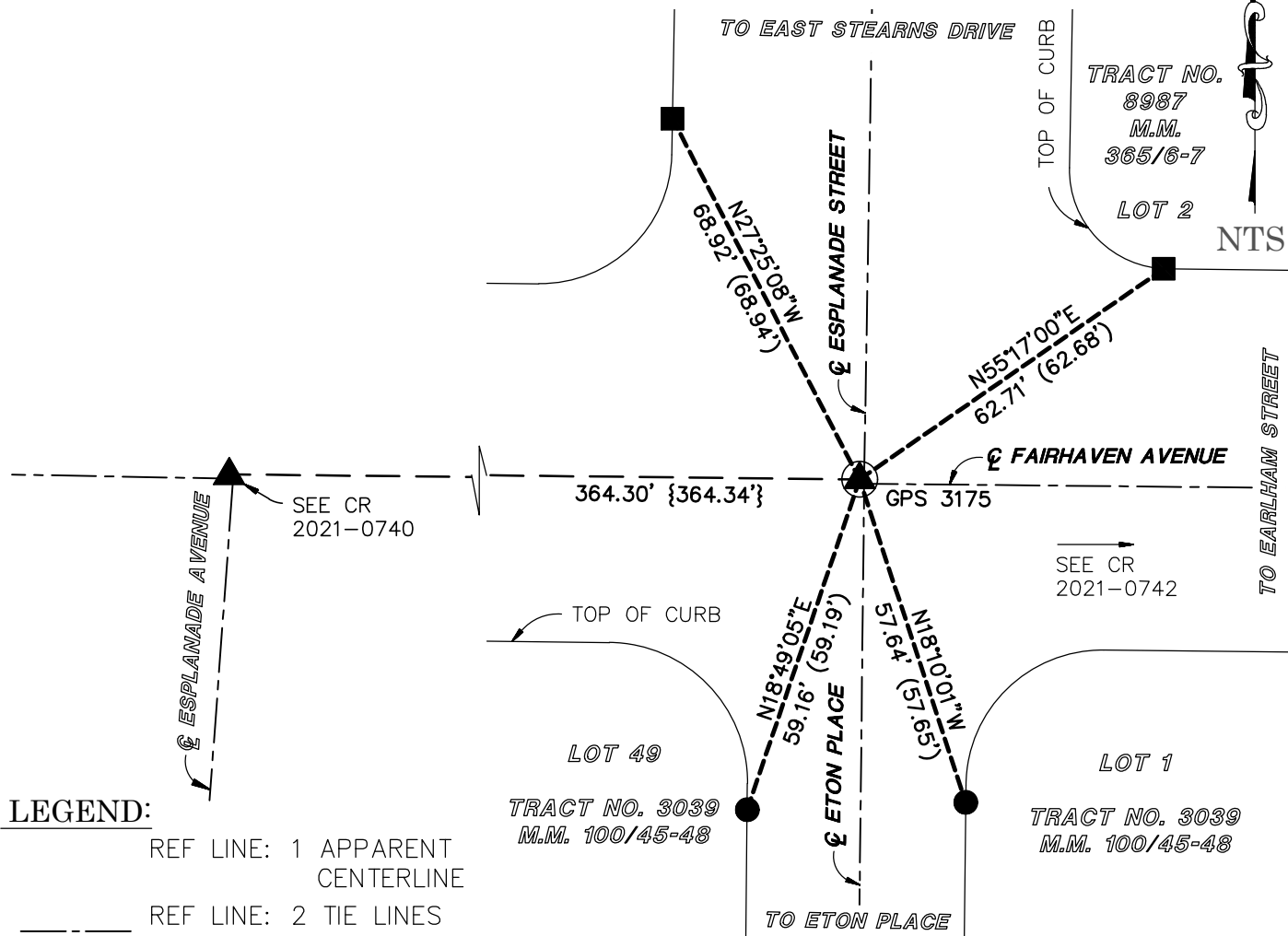
Signed Jeffrey J. Lenherr (P.L.S.) or R.C.E. No. 9305

COUNTY SURVEYOR'S STATEMENT

This Corner Record was received JANUARY 14, 2022and examined and filed FEBRUARY 16, 2022Signed Kevin R. Hills P.L.S. or R.C.E. No. 6617Title COUNTY SURVEYOR

County Surveyor's Comment _____

PRE-CONSTRUCTION CORNER RECORD



LEGEND:

- REF LINE: 1 APPARENT CENTERLINE
- REF LINE: 2 TIE LINES
- REF LINE: 3 MEAS BETWEEN MONUMENTS
- REF LINE: 4 EDGE OF PAVEMENT
- () RECORD PER R1
- { } RECORD PER R4
- XX.XX' MEASURED

RECORD REFERENCES:

- R1 CORNER RECORD 2019-1202
- R2 CORNER RECORD 2007-2285
- R3 CORNER RECORD 2007-2292
OCS ALIGNMENT NOTES
- R4 A/5-9/789-798

MONUMENT NOTES:

- ▲ FOUND 2" ALUMINUM DISK STAMPED "OCS 10-73", PER R4, DOWN 1.7' IN WELL
- FOUND LEAD, TACK & TAG STAMPED "O.C.S. TIE" PER R1, ON TOP OF CURB, FLUSH
- FOUND LEAD, TACK & TAG STAMPED "LS 5411" PER R3, ON TOP OF CURB, FLUSH
- ▲ FOUND SPIKE & WASHER STAMPED "LS 5411" PER R2, FLUSH

NOTES:

THE PURPOSE OF THIS RECORD IS TO DOCUMENT THE PERPETUATION OF FOUND MONUMENT(S) PURSUANT TO THE PLS ACT SECTION 8771. NO CLAIM IS MADE AS TO THE RELATIONSHIP OF THE POINTS SHOWN HEREON TO TRUE BOUNDARY LOCATIONS. RIGHT OF WAY, PARCEL, OR LOT LINES, OR ANY OTHER DATA RELATED TO DELINEATION OF PROPERTY RIGHTS ARE DISPLAYED FOR GRAPHICAL REPRESENTATION ONLY.