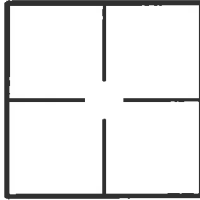


CORNER RECORD

Document Number 2015-2277BCity of TUSTIN County of ORANGE, CaliforniaBrief Legal Description SUSSEX PLACE & GRAMERCY DRIVE

CORNER TYPE

Government Corner ☐ Control ☒
Meander ☐ Property ☐
Rancho ☐ Other ☐
Date of Survey 8/18/2015

COORDINATES (Optional)

N. _____
E. _____
Zone _____ NAD27 ☐ NAD83 ☐
NAD83 Epoch _____
Elevation _____
Vertical Datum: NGVD29 ☐ NAVD88 ☐
Units: Metric ☐ Imperial ☐ U.S. Survey ☒

Corner — Left as found ☐ Found and tagged ☐ Established ☐ Reestablished ☒ Rebuilt ☐

Identification and type of corner found; Evidence used to identify or procedure used to establish or reestablish corner:
FOUND AS DESCRIBED ON THE REVERSE OF THIS SHEET.

A description of the physical condition of the monument as found and as set or reset: _____
SEE PAGE 2

SURVEYOR'S STATEMENT

This Corner Record was prepared by me or under my direction in conformance with
the Professional Land Surveyors' Act on 9/7/2015

Signed [Signature] P.L.S. or R.C.E. No. L.S. 5411



COUNTY SURVEYOR'S STATEMENT

This Corner Record was received SEP 10 2015
examined and filed DEC 12 2015

Signed [Signature] P.L.S. or R.C.E. No. 6131

Title CHIEF DEPUTY SURVEYOR



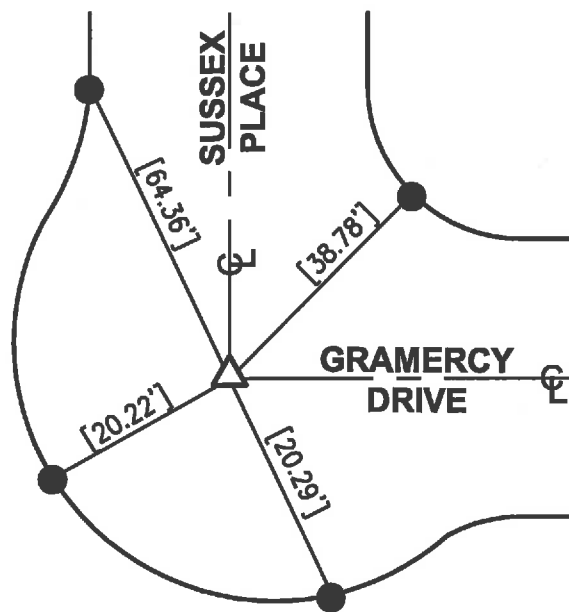
County Surveyor's Comment _____

R-1 = COUNTY OF ORANGE CORNER RECORD 2015-2224 A.

[] = RECORD & MEASURED DISTANCE PER R-1



N.T.S.



△ SET GEAR SPIKE & WASHER "LS 5411" PER TIES ON R-1, FLUSH, AFTER CONSTRUCTION.

● FD. LEAD, TACK & TAG "O.C.S. TIE" IN T.C. PER R-1.

THE PURPOSE OF THIS RECORD IS TO DOCUMENT THE PERPETUATION OF FOUND MONUMENT(S) PURSUANT TO THE PLS ACT SECTION 8771. NO CLAIM IS MADE REGARDING THE CORRECTNESS OF THE POSITION(S) OF SAID MONUMENT(S), NOR THE DIMENSIONAL RELATIONSHIP TO STREET CENTERLINES OR PROPERTY BOUNDARIES.

15-RJN-765