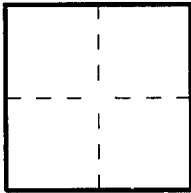


CORNER RECORD

Document Number 2012-4404City of Unincorporated Territory County of Orange, CaliforniaBrief Legal Description Centerline Intersection of 17th St. and Prospect Ave. (N) GPS 6265

CORNER TYPE

Government Corner ☐ Control ☐
Meander ☐ Property ☐
Rancho ☐ Other ☒

Date of Survey 8-20-2012

COORDINATES (Optional)

N. _____
E. _____
Zone _____ NAD27 ☐ NAD83 ☐
NAD83 Epoch _____
Elev. _____
Vert. Datum: NGVD29 ☐ NAVD88 ☐
Meas. Units: Metric ☐ Imperial ☐
U.S. Survey foot ☐

Corner — Left as found ☒ Found and tagged ☐ Established ☐ Reestablished ☐ Rebuilt ☐

Identification and type of corner found; Evidence used to identify or procedure used to establish or reestablish the corner:

Centerline Monument

A description of the physical condition of the monument as found and as set or reset: _____

See monument descriptions on page 2 of 2

SURVEYOR'S STATEMENT

This Corner Record was prepared by me or under my direction in conformance with
the Land Surveyor's Act on DECEMBER 10, 2012

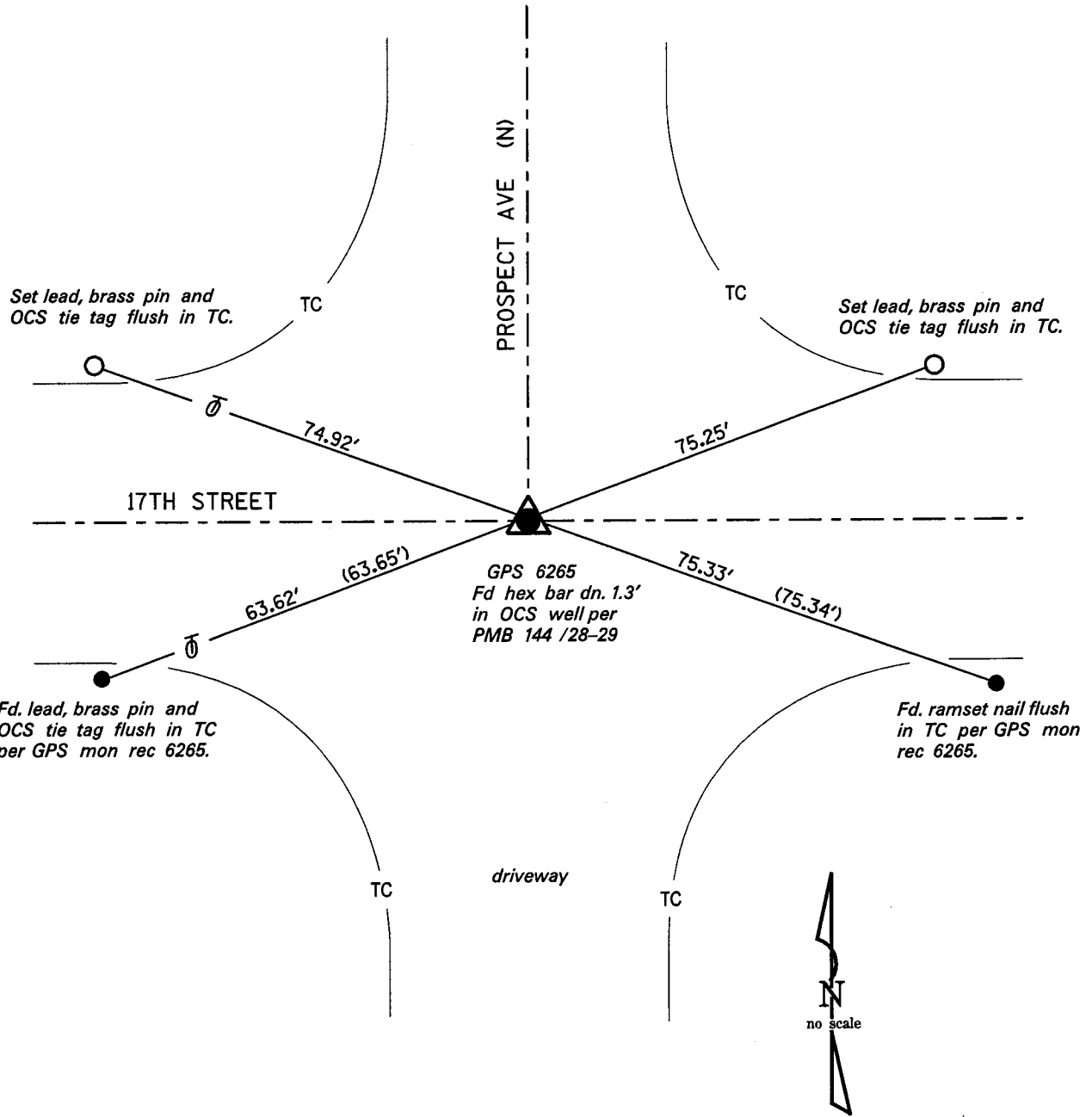
Signed Wade D. Weaver (L.S.) or R.C.E. No. 4337

COUNTY SURVEYOR'S STATEMENT

This Corner Record was received DEC 10 2012and examined and filed JAN 16 2013Signed Craig S. Wehrman (L.S.) or R.C.E. No. 6131Title Chief Deputy Surveyor

County Surveyor's Comment _____

These ties are for perpetuating the found monuments. No claim is made as to
the relationship of the points or lines shown hereon to true boundary locations.



() = record distance per GPS mon rec 6265