

# CORNER RECORD

Agency Index

Document Number

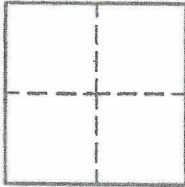
2021-0324

City of TUSTIN

County of ORANGE, California

Brief Legal Description SANTA CLARA AVENUE; 145'± E'LY OF ETHELBEE WAY

## CORNER TYPE



- ☐ Government Corner ☒ Control  
☐ Meander ☐ Property  
☐ Rancho ☐ Other

Date of Survey 10/29/2020

## COORDINATES (Optional)

N. \_\_\_\_\_ E. \_\_\_\_\_

Elevation \_\_\_\_\_

Units Metric ☐ U.S. Survey Foot ☒

Horizontal Datum \_\_\_\_\_

Zone \_\_\_\_\_ Epoch Date \_\_\_\_\_

Vertical Datum \_\_\_\_\_

- ☐ Complies with Public Resources Code §§8801-8819  
☐ Complies with Public Resources Code §§8890-8902

PLS Act Ref: ☐ 8765(d) ☒ 8771 ☐ 8773 ☐ Other:

Corner/  
Monument: ☐ Left as found ☐ Established ☐ Rebuilt ☐ Pre-Construction  
☐ Found and tagged ☒ Reestablished ☒ Referenced ☒ Post-Construction

Narrative of corner identified and monument as found, set, reset, replaced, or removed:  
☒ See sheet #2 for description (s):

## SURVEYOR'S STATEMENT

This Corner Record was prepared by me or under my direction in conformance with  
the Professional Land Surveyors' Act on 1/25/2021

Signed [Signature] P.L.S. or R.C.E. No. 5411



## COUNTY SURVEYOR'S STATEMENT

This Corner Record was received MARCH 4, 2021

and examined and filed SEPTEMBER 20, 2021

Signed [Signature: Kevin R. Hills] P.L.S. or R.C.E. No. 6617

Title COUNTY SURVEYOR

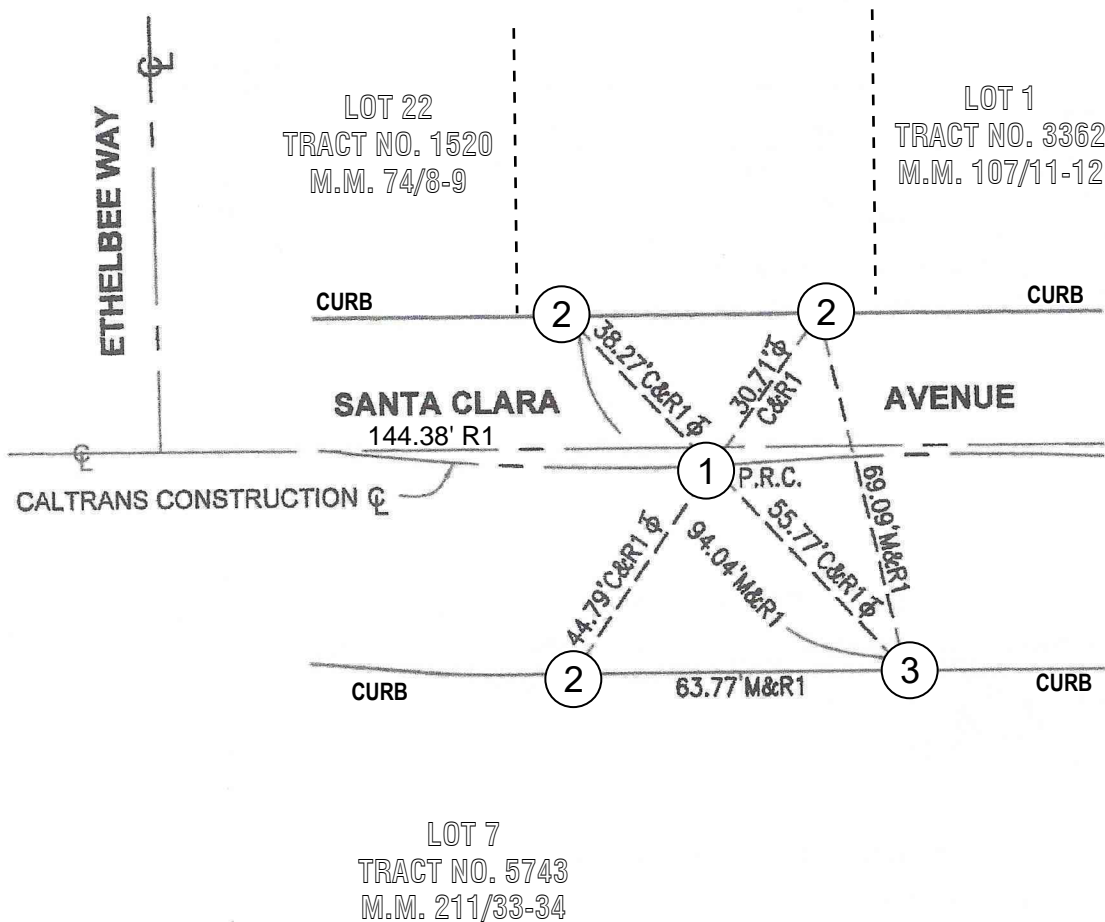


County Surveyor's Comment \_\_\_\_\_

**REFERENCE NOTES:**

R1 = RECORD DATA PER CORNER RECORD 2021-0323  
 C = CALCULATED  
 M = MEASURED  
 SFN = SEARCHED FOUND NOTHING

PARCEL LINES/LOT  
 LINES/PARCEL #/LOT#:  
 ARE SHOWN HEREON  
 FOR GRAPHICAL  
 REPRESENTATION ONLY

**POST-CONSTRUCTION  
CORNER RECORD****MONUMENT NOTES:**

- ① SET GEAR SPIKE & WASHER STAMPED "LS 5411" PER TIES ON R1, FLUSH, AFTER CONSTRUCTION.
- ② FD LEAD, TACK & TAG "CALTRANS" IN TOP OF CURB PER R1.
- ③ SET LEAD, TACK & TAG "LS 5411" IN TOP OF CURB PER TIES ON R1.

THE PURPOSE OF THIS RECORD IS TO DOCUMENT THE PERPETUATION OF FOUND MONUMENT(S) PURSUANT TO THE PLS ACT SECTION 8771.  
 NO CLAIM IS MADE REGARDING THE CORRECTNESS OF THE POSITION(S) OF SAID MONUMENT(S), NOR THE DIMENSIONAL RELATIONSHIP TO  
 STREET CENTERLINES OR PROPERTY BOUNDARIES.

20-SEQ-120