

CORNER RECORD

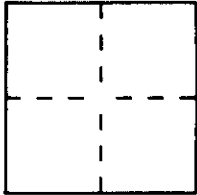
Block 5852
Module 60

Document Number CR 97-412

WM 20W

City of Tustin County of Orange, California

Brief Legal Description Marshall Lane, street bend west of Ethelbee Way



CORNER TYPE

Government Corner ☐ Control ☐
Meander ☐ Property ☐
Rancho ☐ Other ☐
Date of Survey May 5-9, 1997

COORDINATES (Optional)

N _____
E _____
Zone _____ Datum _____
Elev _____

Corner — Left as found ☐ Found and tagged ☐ Established ☐ Reestablished ☒ Rebuilt ☐

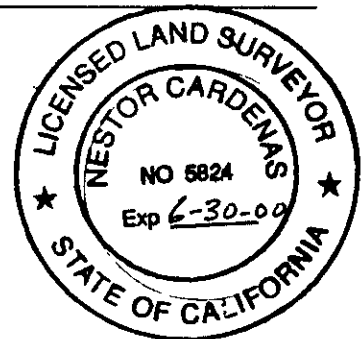
Identification and type of corner found Evidence used to identify or procedure used to establish or reestablish the corner
Points tied prior to street resurfacing by the City of Tustin
were found as described on reverse of this sheet

A description of the physical condition of the monument as found and as set or reset
These ties are for the purpose of perpetuating found monumentation
No claim is made as to the relationship of the points or lines shown
hereon, to the true boundary locations

SURVEYOR'S STATEMENT

This Corner Record was prepared by me or under my direction in conformance with
the Land Surveyors' Act on July 6, 1997

Signed Nestor Cardenas L.S. or R.C.E. Number 5824



COUNTY SURVEYOR'S STATEMENT

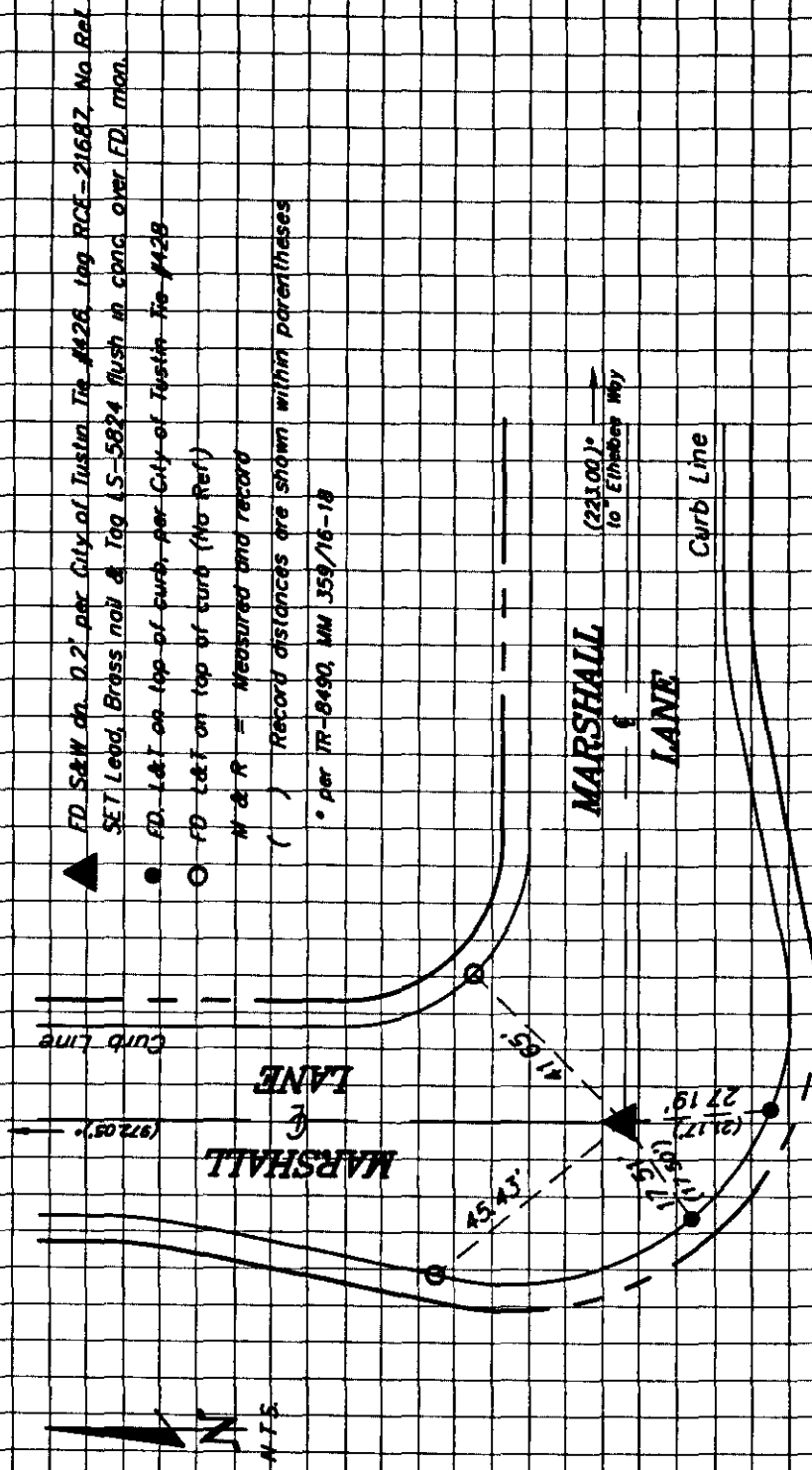
This Corner Record was received July 15, 1997 and examined

and filed August 18, 1997

Signed Michael B. Emons Title Deputy



County Surveyor's Comment _____



THESE NOTES NOT FIELD CHECKED
BY OKLAHOMA COUNTY SURVEYOR