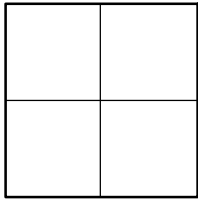


CORNER RECORD

Agency Index _____

Document Number _____

CR 2022-3446

City of UNINCORPORATED TERRITORYCounty of ORANGE, CaliforniaBrief Legal Description AT THE APPARENT INTERSECTION OF FAIRHAVEN AVE & OLYMPIA WAY (NORTH)**CORNER TYPE**

- | | |
|--|---|
| <input type="checkbox"/> Government Corner | <input type="checkbox"/> Control |
| <input type="checkbox"/> Meander | <input type="checkbox"/> Property |
| <input type="checkbox"/> Rancho | <input checked="" type="checkbox"/> Other |

Date of Survey 06/06/2022 &
08/25/2022**COORDINATES (Optional)**

N. _____ E. _____

Elevation _____

Units Metric ☐ U.S. Survey Foot ☒

Horizontal Datum _____

Zone _____ Epoch Date _____

Vertical Datum _____

☐ Complies with Public Resources Code §§8801-8819☐ Complies with Public Resources Code §§8890-8902PLS Act Ref: ☐ 8765(d) ☒ 8771 ☐ 8773 ☐ Other: _____

Corner/ Monument:	<input type="checkbox"/> Left as found	<input type="checkbox"/> Established	<input type="checkbox"/> Rebuilt	<input type="checkbox"/> Pre-Construction
	<input type="checkbox"/> Found and tagged	<input checked="" type="checkbox"/> Reestablished	<input type="checkbox"/> Referenced	<input checked="" type="checkbox"/> Post-Construction

Narrative of corner identified and monument as found, set, reset, replaced, or removed:

☒ See sheet #2 for description (s):

THE PURPOSE OF THIS RECORD IS TO DOCUMENT THE PERPETUATION OF FOUND MONUMENT(S) PURSUANT TO THE PLS ACT SECTION 8771. NO CLAIM IS MADE AS TO THE RELATIONSHIP OF THE POINTS SHOWN HEREON TO TRUE BOUNDARY LOCATIONS. RIGHT OF WAY, PARCEL, OR LOT LINES, OR ANY OTHER DATA RELATED TO DELINEATION OF PROPERTY RIGHTS ARE DISPLAYED FOR GRAPHICAL REPRESENTATION ONLY.

BEARINGS SHOWN HEREON ARE ASSUMED AND ARE DISPLAYED FOR ANGULAR RELATIONSHIP ONLY.

MEASURED DISTANCES SHOWN HEREON ARE GRID DISTANCES, DERIVED BY INVERSE FROM POSITIONS ESTABLISHED BY A FULLY REDUNDANT LEAST SQUARES NETWORK ADJUSTMENT. ALL POINTS WERE EITHER TRAVERSED THROUGH OR DOUBLE DETERMINED, PER CHAPTERS 5 & 11 OF THE OC SURVEY STANDARDS MANUAL TO OBTAIN A GROUND DISTANCE, MULTIPLY A GRID DISTANCE BY 1.00002330.

RECORD DISTANCES SHOWN HEREON ARE AS THEY APPEAR ON THE DOCUMENT OF RECORD. DISTANCES MAY BE EITHER GRID OR GROUND, AS PER SAID RECORD.

SURVEYOR'S STATEMENT

This Corner Record was prepared by me or under my direction in conformance with

the Professional Land Surveyors' Act on 02-14-2023Signed Elliott Medina (P.L.S.) or R.C.E. No. 9294**COUNTY SURVEYOR'S STATEMENT**

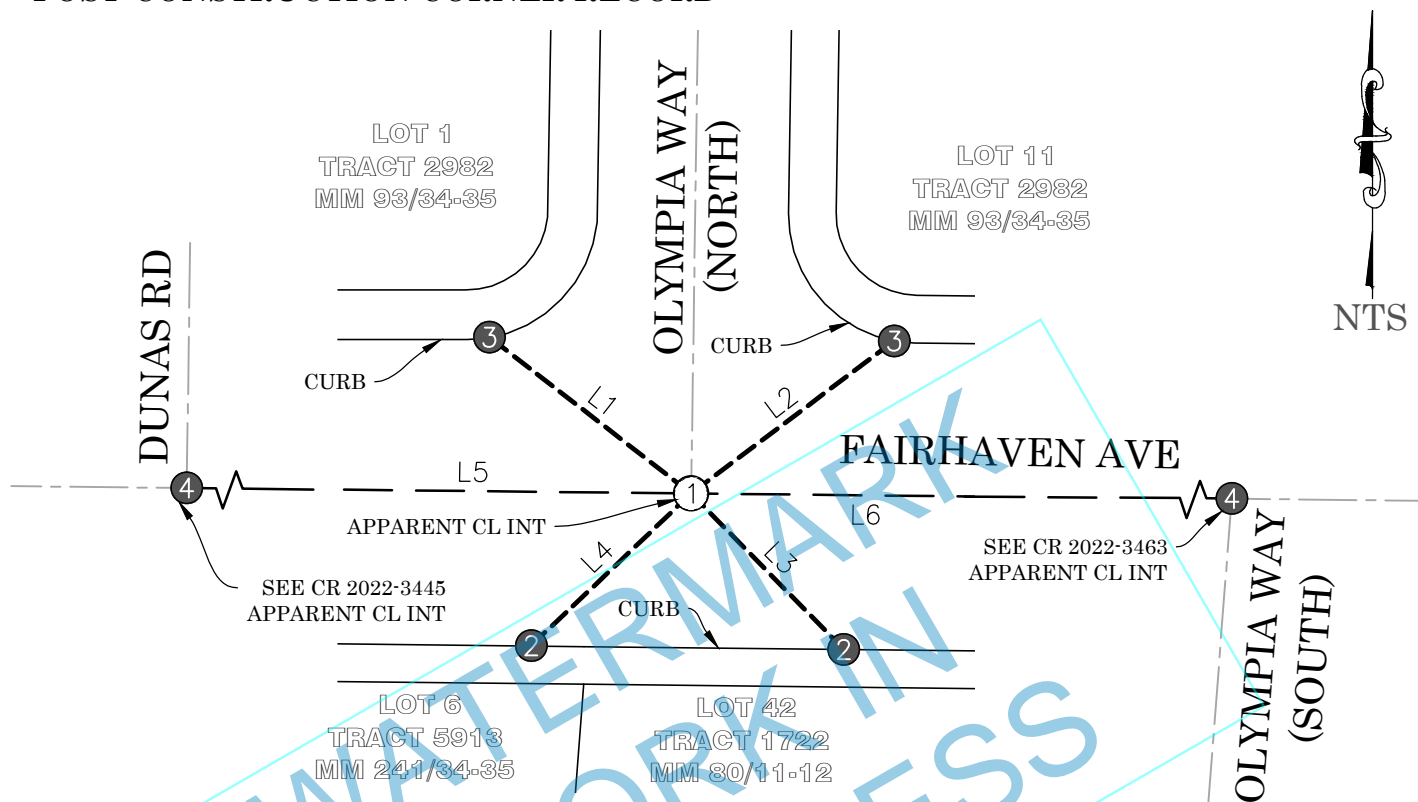
This Corner Record was received _____

and examined and filed _____

Signed _____ (P.L.S.) or R.C.E. No. 8970Title DEPUTY COUNTY SURVEYOR

County Surveyor's Comment _____

MONUMENT TAGGED "PLS 8912" WAS SET AT THE DIRECTION OF OC SURVEY

POST-CONSTRUCTION CORNER RECORD**MONUMENT SYMBOLS:**

FOUND

SET

RECORD REFERENCES:

R1 CORNER RECORD 2022-0850

R2 CORNER RECORD 2007-0318

LEGEND:

- - - - REF LINE 1: APPARENT CENTERLINE
 - - - - REF LINE 2: TIE LINES
 - - - - REF LINE 3: MEAS BETWEEN MONUMENTS
 OCS ORANGE COUNTY SURVEYOR

LINE TABLE

LINE #	MEAS & REC BEARING	MEAS & REC DISTANCE	REF
L1	N52°12'39"W	53.21'	R1
L2	N53°04'14"E	52.95'	R1
L3	N44°24'46"W	45.47'	R1
L4	N46°25'17"E	45.95'	R1
L5	N89°21'57"W	269.65'	R1
L6	M: N89°21'24"W R: N89°21'55"W	M: 120.95' R: 120.95'	R1

MONUMENT NOTES:

- ① SEARCHED, FD NOTHING; SET SPIKE & 1-1/2" BR WSHR STMPD "PLS 8912" FLUSH IN AC, PER TIES AS SHOWN HEREON
- ② FD LEAD & 3/4" BR TAG STMPD "OCS TIE" ON TOP OF CONC CURB, PER R2
- ③ FD LEAD & 3/4" BR TAG STMPD "OCS TIE" ON TOP OF CONC CURB, PER R1
- ④ FD MONUMENT AS SHOWN ON ADJACENT CORNER RECORD