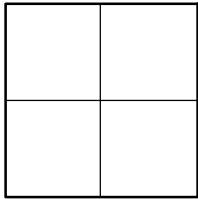


CORNER RECORD

Agency Index _____

Document Number _____

CR 2022-3445

City of UNINCORPORATED TERRITORYCounty of ORANGE, CaliforniaBrief Legal Description AT THE APPARENT INTERSECTION OF FAIRHAVEN AVE & DUNAS RD

CORNER TYPE

- ☐ Government Corner ☐ Control
☐ Meander ☐ Property
☐ Rancho ☒ Other

Date of Survey 06/06/2022 &
08/25/2022

COORDINATES (Optional)

N. _____ E. _____

Elevation _____

Units ☐ Metric ☒ U.S. Survey Foot

Horizontal Datum _____

Zone _____ Epoch Date _____

Vertical Datum _____

☐ Complies with Public Resources Code §§8801-8819☐ Complies with Public Resources Code §§8890-8902PLS Act Ref: ☐ 8765(d) ☒ 8771 ☐ 8773 ☐ Other: _____

Corner/
Monument: ☐ Left as found ☐ Established ☐ Rebuilt ☐ Pre-Construction
☐ Found and tagged ☒ Reestablished ☐ Referenced ☒ Post-Construction

Narrative of corner identified and monument as found, set, reset, replaced, or removed:

☒ See sheet #2 for description (s):

THE PURPOSE OF THIS RECORD IS TO DOCUMENT THE PERPETUATION OF FOUND MONUMENT(S) PURSUANT TO THE PLS ACT SECTION 8771. NO CLAIM IS MADE AS TO THE RELATIONSHIP OF THE POINTS SHOWN HEREON TO TRUE BOUNDARY LOCATIONS. RIGHT OF WAY, PARCEL, OR LOT LINES, OR ANY OTHER DATA RELATED TO DELINEATION OF PROPERTY RIGHTS ARE DISPLAYED FOR GRAPHICAL REPRESENTATION ONLY.

BEARINGS SHOWN HEREON ARE ASSUMED AND ARE DISPLAYED FOR ANGULAR RELATIONSHIP ONLY.

MEASURED DISTANCES SHOWN HEREON ARE GRID DISTANCES, DERIVED BY INVERSE FROM POSITIONS ESTABLISHED BY A FULLY REDUNDANT LEAST SQUARES NETWORK ADJUSTMENT. ALL POINTS WERE EITHER TRAVERSED THROUGH OR DOUBLE DETERMINED, PER CHAPTERS 5 & 11 OF THE OC SURVEY STANDARDS MANUAL. TO OBTAIN A GROUND DISTANCE, MULTIPLY A GRID DISTANCE BY 1.00002330.

RECORD DISTANCES SHOWN HEREON ARE AS THEY APPEAR ON THE DOCUMENT OF RECORD. DISTANCES MAY BE EITHER GRID OR GROUND, AS PER SAID RECORD.

SURVEYOR'S STATEMENT

This Corner Record was prepared by me or under my direction in conformance with

the Professional Land Surveyors' Act on 02-14-2023Signed Elliott Medina (P.L.S.) or R.C.E. No. 9294

COUNTY SURVEYOR'S STATEMENT

This Corner Record was received _____

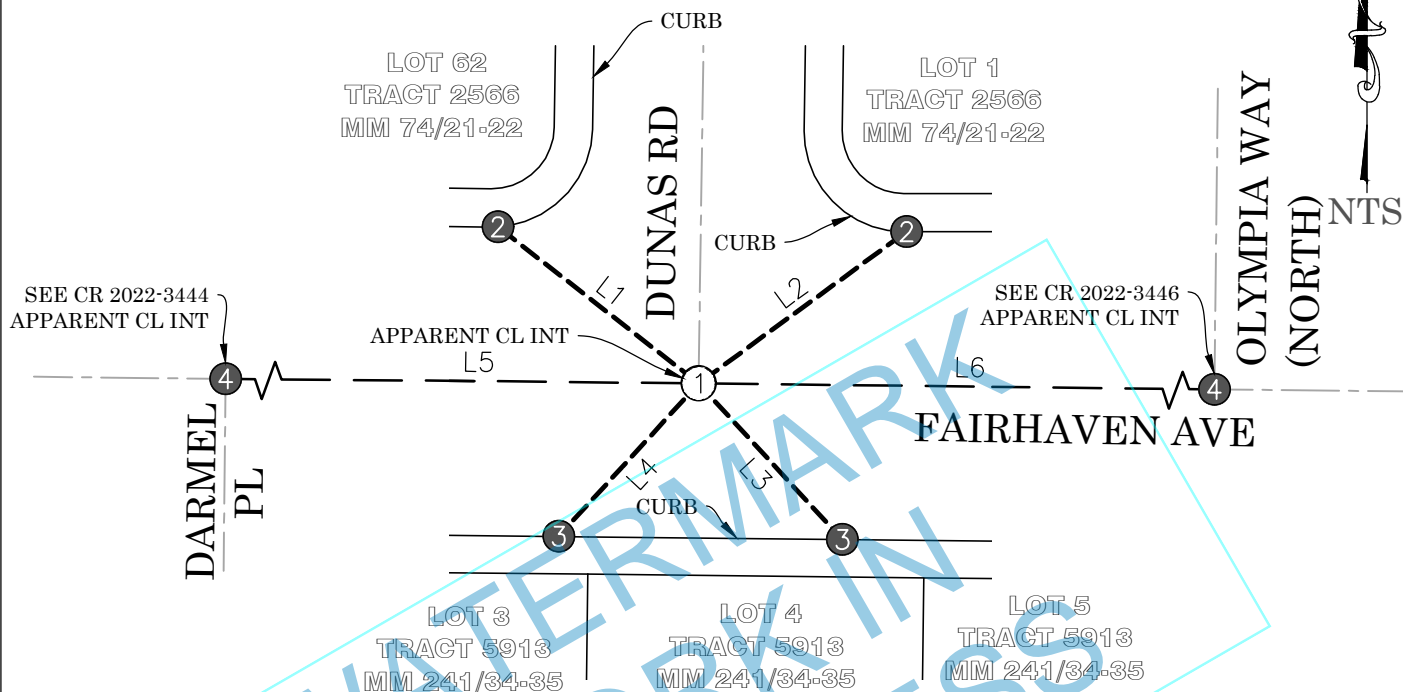
and examined and filed _____

Signed _____ (P.L.S.) or R.C.E. No. 8970Title DEPUTY COUNTY SURVEYOR

County Surveyor's Comment _____

MONUMENT TAGGED "PLS 8912" WAS SET AT THE DIRECTION OF OC SURVEY

POST-CONSTRUCTION CORNER RECORD

**RECORD REFERENCES:**

R1 CORNER RECORD 2022-0850
 R2 CORNER RECORD 2021-0732
 R3 CORNER RECORD 2007-2294
 R4 CORNER RECORD 2007-1253

LEGEND:

--- REF LINE 1: APPARENT CENTERLINE

--- REF LINE 2: TIE LINES

--- REF LINE 3: MEAS BETWEEN MONUMENTS

OCS ORANGE COUNTY SURVEYOR

LINE TABLE

LINE #	MEAS & REC BEARING	MEAS & REC DISTANCE	REF
L1	N52°00'55"W	53.08'	R2
L2	N53°52'13"E	53.65'	R2
L3	N42°38'37"W	44.20'	R2
L4	M: N42°29'39"E R: N42°30'06"E	M: 43.17' R: 43.14'	R2
L5	M: N89°22'23"W R: N/A	M: 268.70' R: 268.70'	R2
L6	N89°21'57"W	269.65'	R1

MONUMENT SYMBOLS:

FOUND
 # SET

MONUMENT NOTES:

- ① SEARCHED, FD NOTHING; SET SPIKE & 1-1/2" BR WSHR STMPD "PLS 8912" FLUSH IN AC, PER TIES AS SHOWN HEREON
- ② FD LEAD & 3/4" BR TAG STMPD "LS 5411" ON TOP OF CONC CURB, PER R3
- ③ FD LEAD & 3/4" BR TAG STMPD "OCS TIE" ON TOP OF CONC CURB, PER R4
- ④ FD MONUMENT AS SHOWN ON ADJACENT CORNER RECORD