

# TRACT NO 2614

BEING A SUBDIVISION OF A PORTION OF THE SOUTH HALF OF LOT 5 IN BLOCK M OF LANDS OF MESS'RS GLASSELL AND CHAPMAN, AS PER MAP RECORDED IN BOOK 1 PAGES 23 AND 24 OF MISCELLANEOUS MAPS, RECORDS OF ORANGE COUNTY, CALIFORNIA.

IN UNINCORPORATED TERRITORY COUNTY OF ORANGE

STATE OF CALIFORNIA

RAYMOND L. QUIGLEY  
R.C.E. 7191

NOVEMBER 1958

8.968 ACRES  
28 LOTS

47223  
ACCEPTED  
AND  
FILED

AT 9 A. M. MAR 27 1959  
AT REQUEST OF  
TITLE INSURANCE & TRUST COMPANY

ORANGE COUNTY RECORDS

By *Quigley* M. Farland

COUNTY RECORDER

WE THE UNDERSIGNED, BEING ALL PARTIES HAVING ANY RECORD TITLE INTEREST IN THE LAND COVERED BY THIS MAP, DO HEREBY CONSENT TO THE PREPARATION AND RECORDATION OF SAID MAP AS SHOWN WITHIN THE BLUE-COLORED BORDER LINE, AND WE HEREBY OFFER FOR DEDICATION, AS PUBLIC HIGHWAYS LARKSTONE DRIVE, SWIDLER PLACE, OLYMPIA WAY, AND ST. MORITZ CIRCLE.

I, RAYMOND L. QUIGLEY, HEREBY CERTIFY THAT I AM A REGISTERED CIVIL ENGINEER OF THE STATE OF CALIFORNIA, THAT THIS MAP, CONSISTING OF 2 SHEETS, CORRECTLY REPRESENTS A TRUE AND COMPLETE SURVEY MADE UNDER MY SUPERVISION IN JULY, 1958, THAT THE MONUMENTS ARE OF THE CHARACTER AND OCCUPY THE POSITIONS INDICATED, OR WILL BE SET IN SUCH POSITIONS AT SUCH TIME AS AGREED UPON WITH THE COUNTY SURVEYOR AND THAT SAID MONUMENTS ARE SUFFICIENT TO ENABLE THE SURVEY TO BE READILY RETRACED.

*Raymond L. Quigley*  
RAYMOND L. QUIGLEY R.C.E. 7191

AFCO, Inc., a California Corporation

*Fred J. Howarth* President - FRED J. HOWARTH  
*Amedor Mori* Secretary - AMEDOR MORI

I, ALLEN KGOH, COUNTY SURVEYOR OF ORANGE COUNTY, CALIFORNIA, DO HEREBY CERTIFY THAT I HAVE EXAMINED THIS MAP AND HAVE FOUND IT TO BE SUBSTANTIALLY THE SAME AS THE TENTATIVE MAP AS FILED, AMENDED AND APPROVED BY THE ORANGE COUNTY PLANNING COMMISSION AND THAT ALL PROVISIONS OF THE SUBDIVISION MAP ACT AND COUNTY SUBDIVISION REGULATIONS HAVE BEEN COMPLIED WITH AND I AM SATISFIED SAID MAP IS TECHNICALLY CORRECT.

DATED THIS 20 DAY OF March 1959.

*Allen KgoH*  
DEPUTY COUNTY SURVEYOR

TITLE INSURANCE and TRUST COMPANY, a Corporation, Trustees under deed of trust recorded January 8, 1959 in book 4540 page 343, Official Records.

*W. A. Heim*  
Asst. Sec'y

WALKER PARTNERSHIP, a Partnership

*Hugh T. Walker* By - HUGH T. WALKER  
*Evelyn W. Lewis* By - EVELYN W. LEWIS

STATE OF CALIFORNIA ) SS  
COUNTY OF ORANGE )

I, V.A. HEIM, COUNTY AUDITOR OF ORANGE COUNTY, DO HEREBY CERTIFY THAT, ACCORDING TO THE RECORDS OF MY OFFICE THERE ARE NO LIENS AGAINST THE LAND SHOWN ON THIS MAP, OR ANY PART THEREOF, FOR UNPAID STATE OR COUNTY TAXES, OR SPECIAL ASSESSMENTS COLLECTED AS TAXES, EXCEPT TAXES AND SPECIAL ASSESSMENTS COLLECTED AS TAXES, NOT YET DUE AND PAYABLE.

DATED THIS 18th DAY OF March 1959.

*V.A. Heim*  
COUNTY AUDITOR  
BY *Evelyn W. Lewis*  
DEPUTY

STATE OF CALIFORNIA ) SS  
COUNTY OF ORANGE )

ON THIS 14th DAY OF January, 1959, BEFORE ME Harry R. Noble, A NOTARY PUBLIC IN AND FOR SAID COUNTY AND STATE, PERSONALLY APPEARED FRED J. HOWARTH, KNOWN TO ME TO BE THE President, AND AMEDOR MORI, KNOWN TO ME TO BE THE Secretary, OF AFCO, Inc., a California Corporation, THE CORPORATION THAT EXECUTED THE WITHIN INSTRUMENT AND KNOWN TO ME TO BE THE PERSONS WHO EXECUTED THE WITHIN INSTRUMENT ON BEHALF OF THE CORPORATION THEREIN NAMED AND ACKNOWLEDGED TO ME THAT SAID CORPORATION EXECUTED THE SAME.

WITNESS MY HAND AND OFFICIAL SEAL.  
MY COMMISSION EXPIRES January 11, 1963.

*Harry R. Noble*  
NOTARY PUBLIC IN AND FOR SAID  
COUNTY AND STATE

STATE OF CALIFORNIA ) SS  
COUNTY OF ORANGE )

I, L.B. WALLACE, COUNTY CLERK AND EX-OFFICIO CLERK OF THE BOARD OF SUPERVISORS OF ORANGE COUNTY, DO HERBY CERTIFY TO THE COUNTY RECORDER OF ORANGE COUNTY THAT ALL PROVISIONS OF THE SUBDIVISION MAP ACT HAVE BEEN COMPLIED WITH REGARDING DEPOSITS TO SECURE THE PAYMENT OF TAXES AND SPECIAL ASSESSMENTS ON THE LAND COVERED BY THIS MAP.

DATED THIS 24 DAY OF March 1959.

*Raymond L. Quigley* DEPUTY  
*L.B. Wallace*  
COUNTY CLERK & EX-OFFICIO CLERK  
OF THE BOARD OF SUPERVISORS

STATE OF CALIFORNIA ) SS  
COUNTY OF ORANGE )

I, L.B. WALLACE, COUNTY CLERK OF ORANGE COUNTY, DO HEREBY CERTIFY THAT THIS MAP WAS PRESENTED FOR APPROVAL TO THE BOARD OF SUPERVISORS OF ORANGE COUNTY AT A REGULAR MEETING THEREOF HELD ON THE 24 DAY OF March 1959, AND THAT THEREUPON SAID BOARD DID, BY AN ORDER DULY PASSED AND ENTERED, APPROVED SAID MAP AND DID ACCEPT ON BEHALF OF THE PUBLIC THE OFFER OF DEDICATION OF LARKSTONE DRIVE, SWIDLER PLACE, OLYMPIA WAY AND ST. MORITZ CIRCLE AS PUBLIC HIGHWAYS.

DATED THIS 24 DAY OF March 1959.

*Raymond L. Quigley* DEPUTY  
*L.B. Wallace*  
COUNTY CLERK & EX-OFFICIO CLERK  
OF THE BOARD OF SUPERVISORS

STATE OF CALIFORNIA ) SS  
COUNTY OF ORANGE )

ON THIS 14th DAY OF January, 1959, BEFORE ME James L. Rowding, A NOTARY PUBLIC IN AND FOR SAID COUNTY AND STATE, PERSONALLY APPEARED W.T. Wightman, KNOWN TO ME TO BE THE Asst. Sec'y, OF THE TITLE INSURANCE and TRUST COMPANY, a Corporation, THE CORPORATION THAT EXECUTED THE WITHIN INSTRUMENT AND KNOWN TO ME TO BE THE PERSON WHO EXECUTED THE WITHIN INSTRUMENT ON BEHALF OF THE CORPORATION THEREIN NAMED AND ACKNOWLEDGED TO ME THAT SAID CORPORATION EXECUTED THE SAME.

WITNESS MY HAND AND OFFICIAL SEAL  
MY COMMISSION EXPIRES February 16, 1959.

*James L. Rowding*  
NOTARY PUBLIC IN AND FOR SAID  
COUNTY AND STATE

STATE OF CALIFORNIA ) SS  
COUNTY OF ORANGE )

ON THIS 19th DAY OF MARCH, 1959 BEFORE ME BARBARA J. STEWART A NOTARY PUBLIC IN AND FOR SAID COUNTY AND STATE, PERSONALLY APPEARED HUGH T. WALKER AND EVELYN W. LEWIS KNOWN TO ME TO BE TWO OF THE PARTNERS OF THE PARTNERSHIP THAT EXECUTED THE WITHIN INSTRUMENT, AND ACKNOWLEDGED TO ME THAT SUCH PARTNERSHIP EXECUTED THE SAME.

WITNESS MY HAND AND OFFICIAL SEAL.  
MY COMMISSION EXPIRES OCT. 16, 1962

*Barbara J. Stewart*  
NOTARY PUBLIC IN AND FOR SAID COUNTY AND STATE.

BASIS OF BEARINGS  
THE BEARING OF PROSPECT AVENUE SHOWN AS N 0-01-50 E ON A MAP OF TRACT #2566 RECORDED IN BOOK 74 PAGES 21&22 OF MISCELLANEOUS MAPS WAS USED AS THE BASIS OF BEARINGS FOR THIS MAP.

MONUMENTATION  
ALL MONUMENTS SHALL OCCUPY POSITIONS INDICATED PRIOR TO ACCEPTANCE OF IMPROVEMENTS.

SET 2" I.P. & TAG "R.C.E. 7191" AT ALL TRACT CORNERS UNLESS OTHERWISE INDICATED.

SET 1/4" I.P. & TAG "R.C.E. 7191" AT ALL LOT CORNERS.  
A SPIKE & TIN WILL BE SET AT ALL STREET CENTER-LINE INTERSECTIONS, TERMINATION OF STREETS AND ALL OTHER POINTS OF CONTROL.

THE SIGNATURE OF THE SANTA ANA VALLEY IRRIGATION COMPANY, HOLDER OF AN EASEMENT RECORDED NOVEMBER 8, 1922 IN BOOK 438 PAGE 232, OF DEEDS, HAS BEEN OMITTED IN ACCORDANCE WITH SECTION 11587, BUSINESS AND PROFESSIONAL CODE.

ORIGINAL

SHEET 2 OF 2 SHEETS

47223 INDEXED

ACCEPTED  
AND  
FILED

AT 9 A. M. MAR 27 1959  
AT REQUEST OF  
TITLE INSURANCE & TRUST COMPANY

ORANGE COUNTY RECORDS  
Ruby M. Farland  
\$7.00 COUNTY RECORDER

# TRACT NO 2614

IN UNINCORPORATED TERRITORY  
COUNTY OF ORANGE STATE OF CALIFORNIA

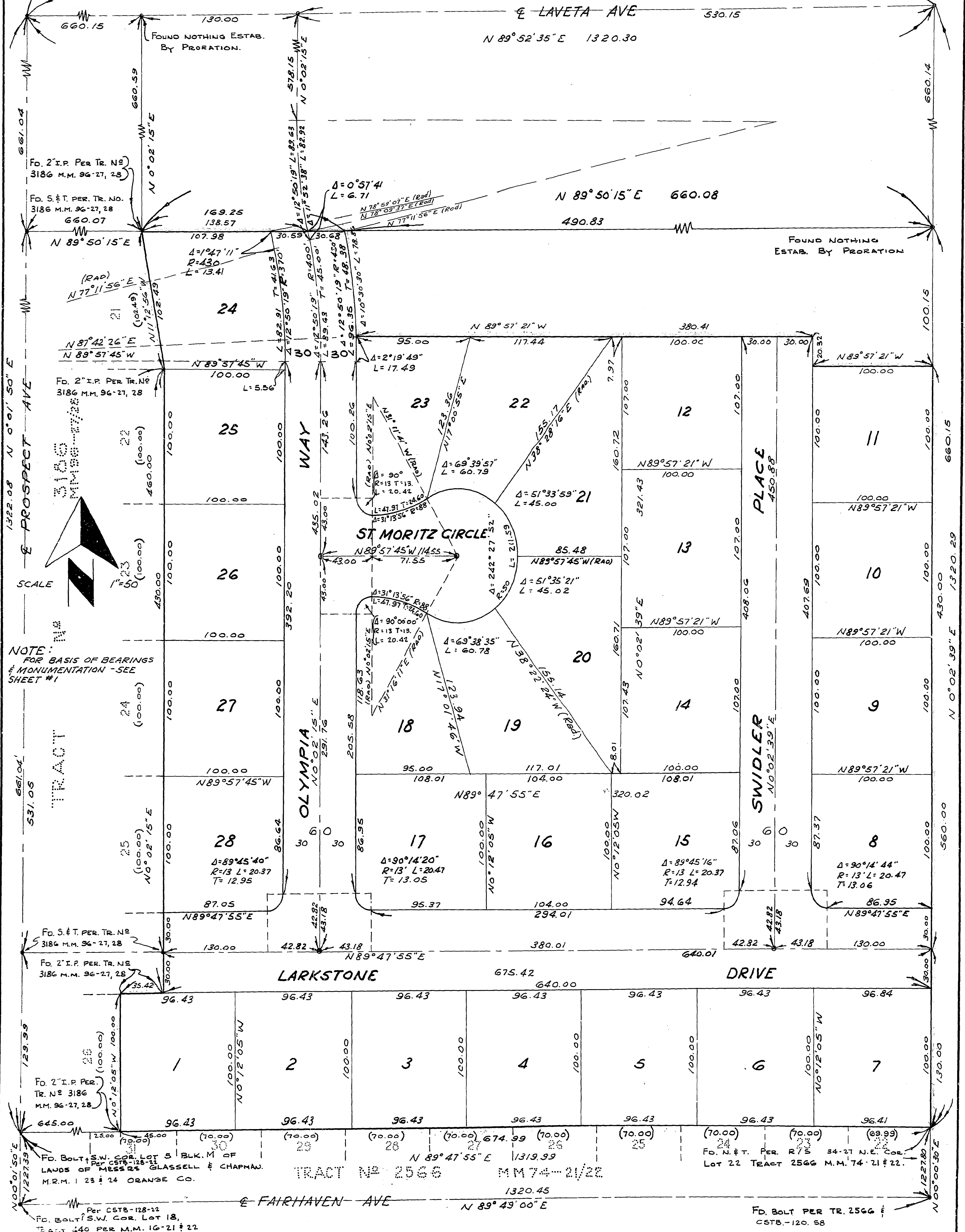
NOVEMBER 1958

RAYMOND L. QUIGLEY R.C.E. 7191

FD. BOLT PER C.S.T.B. 120-73 N.W. COR. LOT 5  
BLK. M. OF LANDS OF MESSRS GLASSSELL AND  
CHAPMAN M.R.M. 1-23-24 ORANGE CO.

SEE SHEET 1 FOR BASIS OF BEARING AND  
MONUMENT NOTES.

FD. 3/4 I.P. PER. R/S 34-27 N.E. COR. LOT 5 BLK.  
M OF LANDS OF MESSRS GLASSSELL AND  
CHAPMAN M.R.M. 1-23-24 ORANGE CO.



NOTE:  
FOR BASIS OF BEARINGS  
& MONUMENTATION - SEE  
SHEET #1

TRACT NO 2566 MM 74-21/22

FD. BOLT PER TR. 2566 &  
CSTB. -120.58