

TRACT NO 2566

BEING A RESUBDIVISION OF LOT 17 & PORTIONS OF LOTS 16 & 18, TRACT NO 440,
PAGES 21 & 22, BOOK 16, MISCELLANEOUS MAPS OF ORANGE COUNTY, CALIFORNIA.

IN UNINCORPORATED TERRITORY OF ORANGE COUNTY, CALIFORNIA

17 ACRES

MARCH 1955

62 LOTS

INDEXED
68983
ACCEPTED
AND
FILED
JUN 9 1955
AT REQUEST OF
SECURITY TITLE INSURANCE CO.
ORANGE COUNTY RECORDS
P. M. Farland
COUNTY RECORDER
FEE \$2.00

We, the undersigned, being all parties having any record title interest in the land covered by this map do hereby consent to the preparation and recordation of said map as shown within the blue colored border line and we hereby offer for dedication for public use for street and highway purposes FAIRHAVEN AVENUE, DUNAS ROAD, ROMELLE AVENUE, CASSELLE AVENUE, and SWIDLER PLACE. We also offer for dedication "LOT A" and "LOT C", said dedication to take effect when CASSELLE AVENUE is extended and accepted in adjoining territory; we also offer for dedication "LOT B", said dedication to take effect when DUNAS ROAD is extended and accepted in adjoining territory. VEHICULAR ACCESS RIGHTS from all lots abutting FAIRHAVEN AVENUE are dedicated to the COUNTY OF ORANGE.

I, Allen S. Koch, County Surveyor of Orange County, California, do hereby certify that I have examined this map and found it to be substantially the same as the tentative map as filed, amended and approved by the Orange County Planning Commission; that all provisions of the Subdivision Map Act and County Subdivision Regulations have been complied with, and I am satisfied said map is technically correct.

Dated this 6 day of June, 1955.

Allen S. Koch
County Surveyor

PEARL PARK, INC., a corporation

Morton Greene
Secretary

Ronald S. Dumas
President

SECURITY TITLE INSURANCE CO., a corporation. Trustee under deed(s) of trust.

Wm. P. Coverly
Vice President

Ronald S. Dumas
Asst. Secretary

SANTA ANA VALLEY IRRIGATION CO., a corporation

W. L. West
President

D. C. Hansen
Secretary

State of California } ss.
County of Orange }

On this 1st day of June, 1955, before me, E. H. Campbell, a Notary Public in and for said County and State, personally appeared Ronald S. Dumas, known to me to be the President, and Morton Greene known to me to be the Secretary of PEARL PARK, INC., a corporation, the corporation that executed the within instrument, and known to me to be the persons who executed the within instrument on behalf of the corporation therein named, and acknowledged to me that such corporation executed the same.

Witness my hand and official seal.

E. H. Campbell
Notary Public in and for
said County and State.

State of California } ss.
County of Orange }

On this 2nd day of May, 1955, before me, E. H. Campbell, a Notary Public in and for said County and State, personally appeared Wm. P. Coverly, known to me to be the Vice President, and Ronald S. Dumas, known to me to be the Asst. Secretary of SECURITY TITLE INSURANCE CO., a corporation, the corporation that executed the within instrument, and known to me to be the persons who executed the within instrument on behalf of the corporation therein named, and acknowledged to me that such corporation executed the same.

WITNESS my hand and official seal.

E. H. Campbell
Notary Public in and for
said County and State.

State of California } ss.
County of Orange }

On this 1st day of June, 1955, before me, Jewel E. Gullett, a Notary Public in and for said County and State, personally appeared W. L. West, known to me to be the President, and D. C. Hansen, known to me to be the Secretary of SANTA ANA VALLEY IRRIGATION CO., a corporation, the corporation that executed the within instrument, and known to me to be the persons who executed the within instrument on behalf of the corporation therein named, and acknowledged to me that such corporation executed the same.

WITNESS my hand and official seal.

Jewel E. Gullett
Notary Public in and for
said County and State.

STATE OF CALIFORNIA } ss
COUNTY OF ORANGE }

I, B. J. Smith, County Clerk of said County of Orange, do hereby certify that this map was presented for approval to the Board of Supervisors of said County of Orange at a regular meeting thereof held on 7 day of June, 1955, and that thereupon said Board did, by an order duly passed and entered, approve said map and did accept on behalf of the public the offer of dedication of FAIRHAVEN AVENUE, DUNAS ROAD, ROMELLE AVENUE, CASSELLE AVENUE, SWIDLER PLACE, AND DID ACCEPT VEHICULAR ACCESS RIGHTS FROM ALL LOTS ABUTTING FAIRHAVEN AVENUE.

Dated this 8 day of June, 1955.

B. J. Smith
County Clerk and ex-officio Clerk
of the Board of Supervisors
by Wayne A. Hager, Deputy

STATE OF CALIFORNIA } S.S.
COUNTY OF ORANGE }

I, B. J. Smith, County Clerk and ex-officio Clerk of the Board of Supervisors of Orange County, do hereby certify to the County Recorder of Orange County that the provisions of the Subdivision Map Act have been complied with regarding deposits to secure the payment of Taxes and Assessments on the land covered by this Map.

Dated this 8 day of June, 1955.

B. J. Smith
County Clerk and ex-officio Clerk
of the Board of Supervisors
by Wayne A. Hager, Deputy

STATE OF CALIFORNIA } S.S.
COUNTY OF ORANGE }

I, L. H. Eckel, County Auditor of the County of Orange, do hereby certify that according to the records of my office there are no liens against the land shown on this map or any part thereof for unpaid State or County taxes or special assessments collected as taxes, except taxes and special assessments collected as taxes not yet due and payable.

Dated this 2nd day of June, 1955.

L. H. ECKEL
L. H. Eckel, County Auditor
By Helen Witt
Deputy

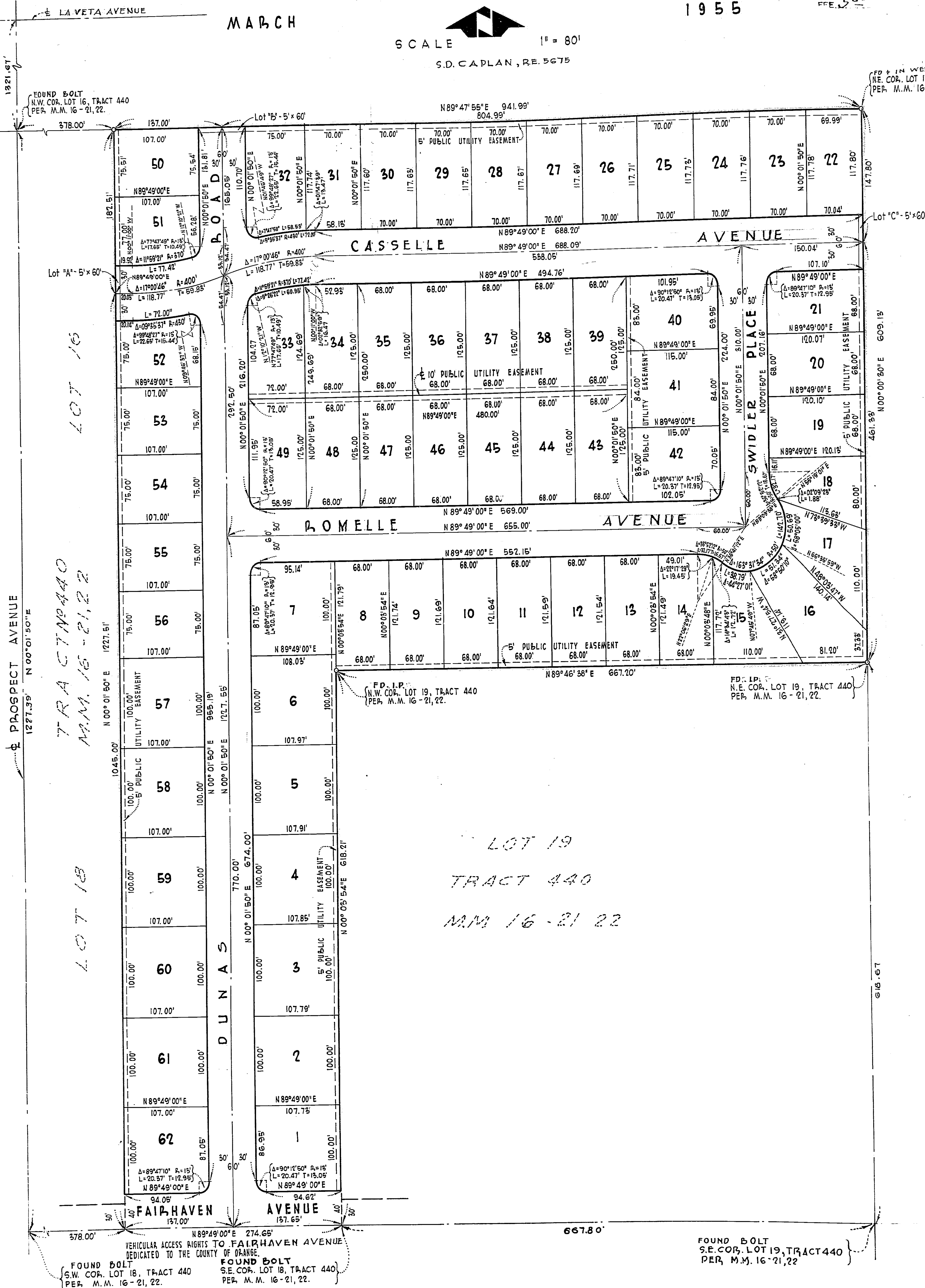
I, S. D. Caplan, hereby certify that I am a Registered Civil Engineer No. 5675 of the State of California and that this Map consisting of 2 sheets correctly represents a true and complete survey made under my direction in April, 1955; that the monuments are of the character and occupy the positions indicated or will be set in such positions and at such time as agreed upon with the County Surveyor, and that said monuments are sufficient to enable the survey to be retraced.

S. D. Caplan
S. D. Caplan R. E. 5675

TRACT NO 2566

BEING A RESUBDIVISION OF LOT 17 & PORTIONS OF LOTS 16 & 18, TRACT NO 440,
PAGES 21 & 22, BOOK 16, MISCELLANEOUS MAPS OF ORANGE COUNTY, CALIFORNIA
IN UNINCORPORATED TERRITORY OF ORANGE COUNTY, CALIFORNIA

INDEXED
68983
ACCEPTED
AND
FILED
JUN. 9, 1955
At _____ o'clock A.M.
IN PRESENCE OF
SECURITY TITLE INSURANCE CO.
ORANGE COUNTY RECORDS
R. M. Farland
COUNTY RECORDER



BASIS OF BEARINGS

The bearings used on this map are based on those used on Tract No. 440 as recorded in Book 16, Pages 21 & 22 Miscellaneous Maps, Records of Orange County, California, being N 89° 49' 00" E, per Fairhaven Avenue.

NOTES

SET 2" I.P. AT ALL TRACT CORNERS.
SET 3/4" I.P. AT ALL LOT CORNERS WITHIN
90 DAYS FROM COMPLETION OF IMPROVEMENTS.