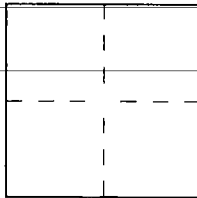


# CORNER RECORD

Document Number 2006-08948City of Orange County of Orange, CaliforniaBrief Legal Description Laurinda Lane & Romelle Avenue

## CORNER TYPE

Government Corner ☐ Control ☒  
Meander ☐ Property ☐  
Rancho ☐ Other ☐

Date of Survey 02/01/06

## COORDINATES (Optional)

N. \_\_\_\_\_  
E. \_\_\_\_\_  
Zone \_\_\_\_\_ NAD27 ☐ NAD83 ☐  
NAD83 Epoch \_\_\_\_\_  
Elev. \_\_\_\_\_  
Vert. Datum: NGVD29 ☐ NAVD88 ☐  
Meas. Units: Metric ☐ Imperial ☐  
U.S. Survey foot ☐

Corner — Left as found ☐ Found and tagged ☐ Established ☐ Reestablished ☒ Rebuilt ☐

Identification and type of corner found; Evidence used to identify or procedure used to establish or reestablish the corner:  
Found as described on the reverse of this sheet.

A description of the physical condition of the monument as found and as set or reset: \_\_\_\_\_

See Page 2

## SURVEYOR'S STATEMENT

This Corner Record was prepared by me or under my direction in conformance with  
the Land Surveyor's Act on May 12, 2006

Signed [Signature] L.S. or R.C.E. No. L.S. 5411



## COUNTY SURVEYOR'S STATEMENT

This Corner Record was received JUN 12 2006  
and examined and filed JUL 17 2006

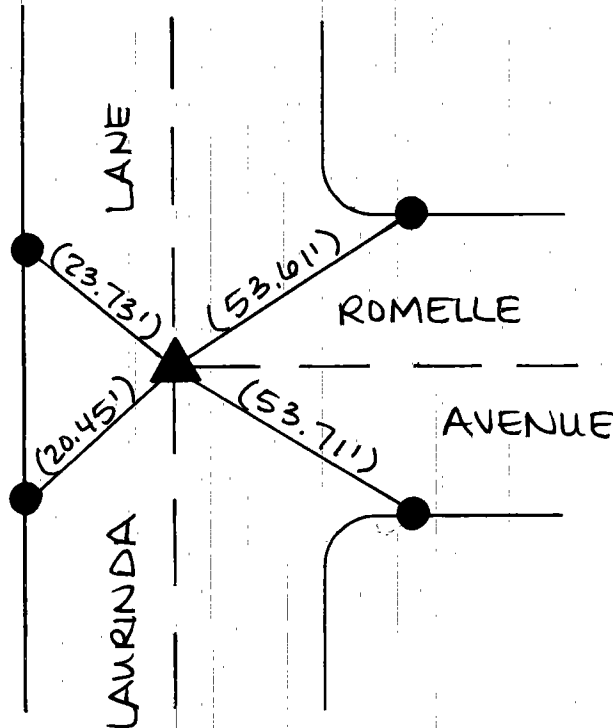
Signed [Signature] L.S. or R.C.E. No. 7212

Title DEPUTY COUNTY SURVEYOR



County Surveyor's Comment \_\_\_\_\_

R-1 = Co. OF ORANGE CR 2006-0187A.  
 ( ) = REC. & MEAS. DIST. PER R-1.



- ▲ FD. NOTHING. SET SPK/W L.S. 5411 FLUSH AFTER CONSTR.
- FD. LIT L.S. 5411 (PER R-1) IN TOP OF CURB.

The purpose of this record is to document the perpetuation of found monument(s) pursuant to the PLS Act Section 8771. No claim is made regarding the correctness of the position(s) of said monument(s), nor the dimensional relationship to street centerlines or property boundaries.

05-RJN-217