

CORNER RECORD

Agency Index _____

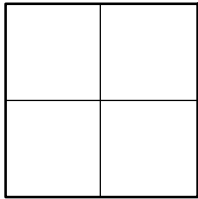
Document Number

CR 2022-3437

City of UNINCORPORATED TERRITORY

County of ORANGE, California

Brief Legal Description AT THE APPARENT INTERSECTION OF FAIRHAVEN AVE & ROSALIND DR (SOUTH)

**CORNER TYPE**

- ☐ Government Corner ☐ Control
☐ Meander ☐ Property
☐ Rancho ☒ Other

Date of Survey 08/01/2022

COORDINATES (Optional)

N. _____ E. _____

Elevation _____

Units Metric ☐ U.S. Survey Foot ☒

Horizontal Datum _____

Zone _____ Epoch Date _____

Vertical Datum _____

☐ Complies with Public Resources Code §§8801-8819☐ Complies with Public Resources Code §§8890-8902PLS Act Ref: ☐ 8765(d)☒ 8771☐ 8773☐ Other: _____Corner/ Monument: ☐ Left as found☐ Established☐ Rebuilt☐ Pre-Construction☐ Found and tagged☒ Reestablished☐ Referenced☒ Post-Construction

Narrative of corner identified and monument as found, set, reset, replaced, or removed:

☒ See sheet #2 for description (s):

THE PURPOSE OF THIS RECORD IS TO DOCUMENT THE PERPETUATION OF FOUND MONUMENT(S) PURSUANT TO THE PLS ACT SECTION 8771. NO CLAIM IS MADE AS TO THE RELATIONSHIP OF THE POINTS SHOWN HEREON TO TRUE BOUNDARY LOCATIONS. RIGHT OF WAY, PARCEL, OR LOT LINES, OR ANY OTHER DATA RELATED TO DELINEATION OF PROPERTY RIGHTS ARE DISPLAYED FOR GRAPHICAL REPRESENTATION ONLY.

BEARINGS SHOWN HEREON ARE ASSUMED AND ARE DISPLAYED FOR ANGULAR RELATIONSHIP ONLY.

MEASURED DISTANCES SHOWN HEREON ARE GRID DISTANCES, DERIVED BY INVERSE FROM POSITIONS ESTABLISHED BY A FULLY REDUNDANT LEAST SQUARES NETWORK ADJUSTMENT. ALL POINTS WERE EITHER TRAVERSED THROUGH OR DOUBLE DETERMINED, PER CHAPTERS 5 & 11 OF THE OC SURVEY STANDARDS MANUAL TO OBTAIN A GROUND DISTANCE, MULTIPLY A GRID DISTANCE BY 1.00002333.

RECORD DISTANCES SHOWN HEREON ARE AS THEY APPEAR ON THE DOCUMENT OF RECORD. DISTANCES MAY BE EITHER GRID OR GROUND, AS PER SAID RECORD.

SURVEYOR'S STATEMENT

This Corner Record was prepared by me or under my direction in conformance with

the Professional Land Surveyors' Act on

02-14-2023

Signed

Elliott Medina

(P.L.S.)

or R.C.E. No.

9294

**COUNTY SURVEYOR'S STATEMENT**

This Corner Record was received

and examined and filed

Signed

(P.L.S.)

or R.C.E. No.

8970

Title DEPUTY COUNTY SURVEYOR

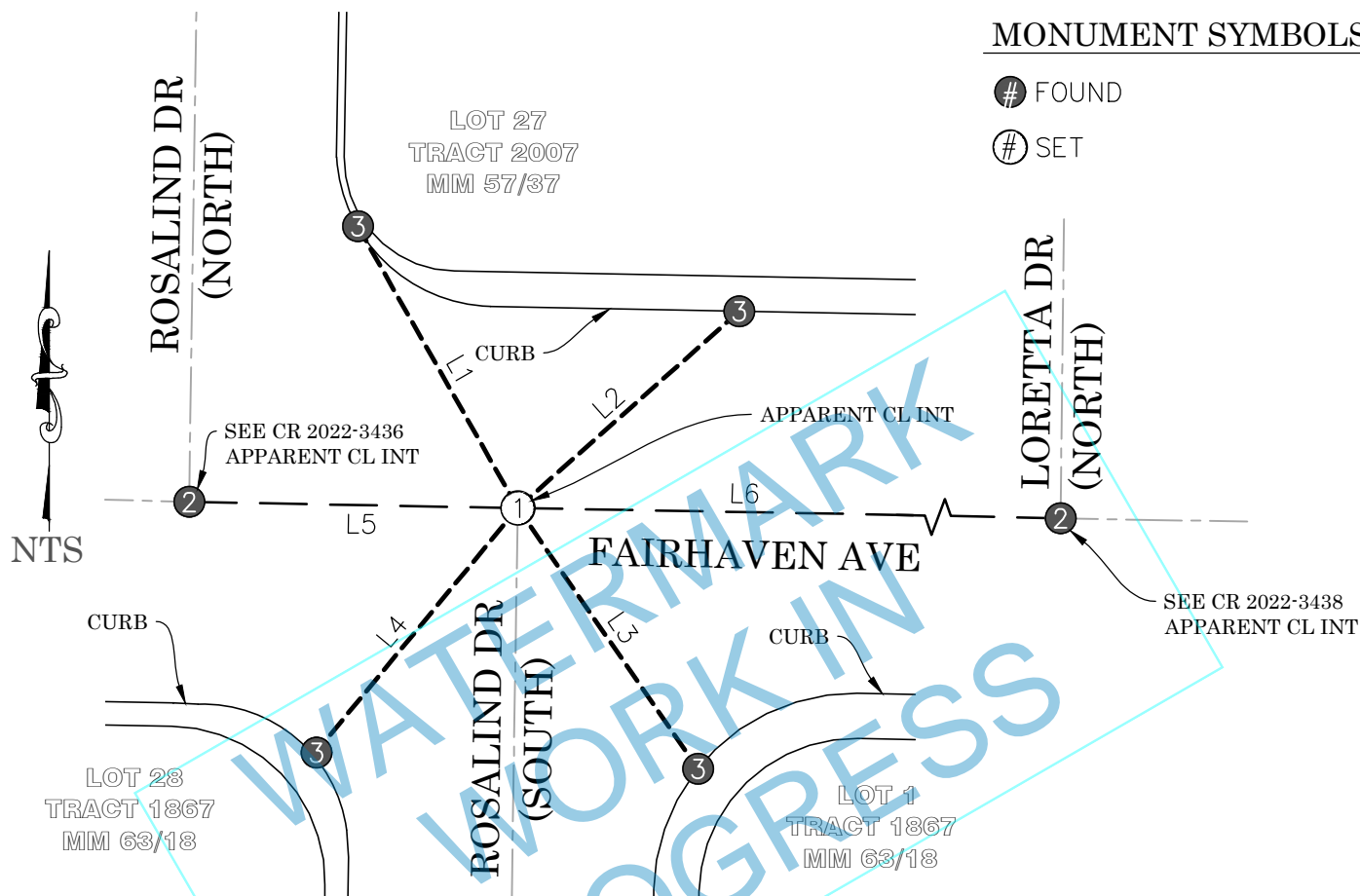


County Surveyor's Comment

POST-CONSTRUCTION CORNER RECORD**MONUMENT SYMBOLS:**

FOUND

SET

**RECORD REFERENCES:**

R1 CORNER RECORD 2021-0723

R2 OCS A/5-9/681-712 (PG 684)

LEGEND:

- REF LINE 1: APPARENT CENTERLINE
- REF LINE 2: TIE LINES
- REF LINE 3: MEAS BETWEEN MONUMENTS
- OCS ORANGE COUNTY SURVEYOR

LINE TABLE

LINE #	MEASURED BEARING	MEASURED DISTANCE	RECORD DISTANCE	REF
L1	N29°34'21"W	51.99'	51.99'	R2
L2	N48°23'06"E	47.53'	47.54'	R2
L3	N34°38'38"W	50.88'	50.88'	R2
L4	N39°33'28"E	50.78'	50.79'	R2
L5	N88°56'08"W	52.71'	52.72'	R2
L6	N88°58'18"W	209.29'	209.27'	R2

MONUMENT NOTES:

- ① SEARCHED, FD NOTHING; SET SPIKE & 1-1/2" SS WSHR STMPD "OCS" FLUSH IN AC, PER TIES AS SHOWN HEREON
- ② FD MONUMENT AS DESCRIBED ON ADJACENT CORNER RECORD
- ③ FD LEAD & 3/4" BR TAG STMPD "PLS 9305 TIE PT" ON TOP OF CONC CURB, PER R1; R1 ADDED A 3/4" BR TAG STMPD "PLS 9305 TIE PT" TO THE LEAD & TACK ON TOP OF CONC CURB FROM R2