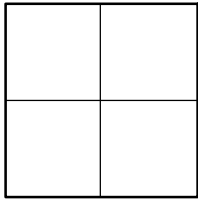


# CORNER RECORD

Agency Index \_\_\_\_\_

Document Number CR 2022-3435City of ORANGECounty of ORANGE, CaliforniaBrief Legal Description AT THE APPARENT INTERSECTION OF FAIRHAVEN AVE & YORBA ST

## CORNER TYPE

- ☐ Government Corner ☒ Control  
☐ Meander ☐ Property  
☐ Rancho ☐ Other

Date of Survey 08/29/2022

## COORDINATES (Optional)

N. \_\_\_\_\_ E. \_\_\_\_\_  
Elevation \_\_\_\_\_  
Units Metric ☐ U.S. Survey Foot ☒  
Horizontal Datum \_\_\_\_\_  
Zone \_\_\_\_\_ Epoch Date \_\_\_\_\_  
Vertical Datum \_\_\_\_\_

- ☐ Complies with Public Resources Code §§8801-8819  
☐ Complies with Public Resources Code §§8890-8902

PLS Act Ref: ☐ 8765(d) ☒ 8771 ☐ 8773 ☐ Other: \_\_\_\_\_

Corner/  
Monument: ☒ Left as found ☐ Established ☐ Rebuilt ☐ Pre-Construction  
☐ Found and tagged ☐ Reestablished ☐ Referenced ☒ Post-Construction

Narrative of corner identified and monument as found, set, reset, replaced, or removed:

☒ See sheet #2 for description (s):

THE PURPOSE OF THIS RECORD IS TO DOCUMENT THE PERPETUATION OF FOUND MONUMENT(S) PURSUANT TO THE PLS ACT SECTION 8771. NO CLAIM IS MADE AS TO THE RELATIONSHIP OF THE POINTS SHOWN HEREON TO TRUE BOUNDARY LOCATIONS. RIGHT OF WAY, PARCEL, OR LOT LINES, OR ANY OTHER DATA RELATED TO DELINEATION OF PROPERTY RIGHTS ARE DISPLAYED FOR GRAPHICAL REPRESENTATION ONLY.

BEARINGS SHOWN HEREON ARE ASSUMED AND ARE DISPLAYED FOR ANGULAR RELATIONSHIP ONLY.

MEASURED DISTANCES SHOWN HEREON ARE GRID DISTANCES, DERIVED BY INVERSE FROM POSITIONS ESTABLISHED BY A FULLY REDUNDANT LEAST SQUARES NETWORK ADJUSTMENT. ALL POINTS WERE EITHER TRAVERSED THROUGH OR DOUBLE DETERMINED, PER CHAPTERS 5 & 11 OF THE OC SURVEY STANDARDS MANUAL TO OBTAIN A GROUND DISTANCE, MULTIPLY A GRID DISTANCE BY 1.00002333.

RECORD DISTANCES SHOWN HEREON ARE AS THEY APPEAR ON THE DOCUMENT OF RECORD. DISTANCES MAY BE EITHER GRID OR GROUND, AS PER SAID RECORD.

## SURVEYOR'S STATEMENT

This Corner Record was prepared by me or under my direction in conformance with  
the Professional Land Surveyors' Act on 02-14-2023

Signed Elliott Medina (P.L.S.) or R.C.E. No. 9294

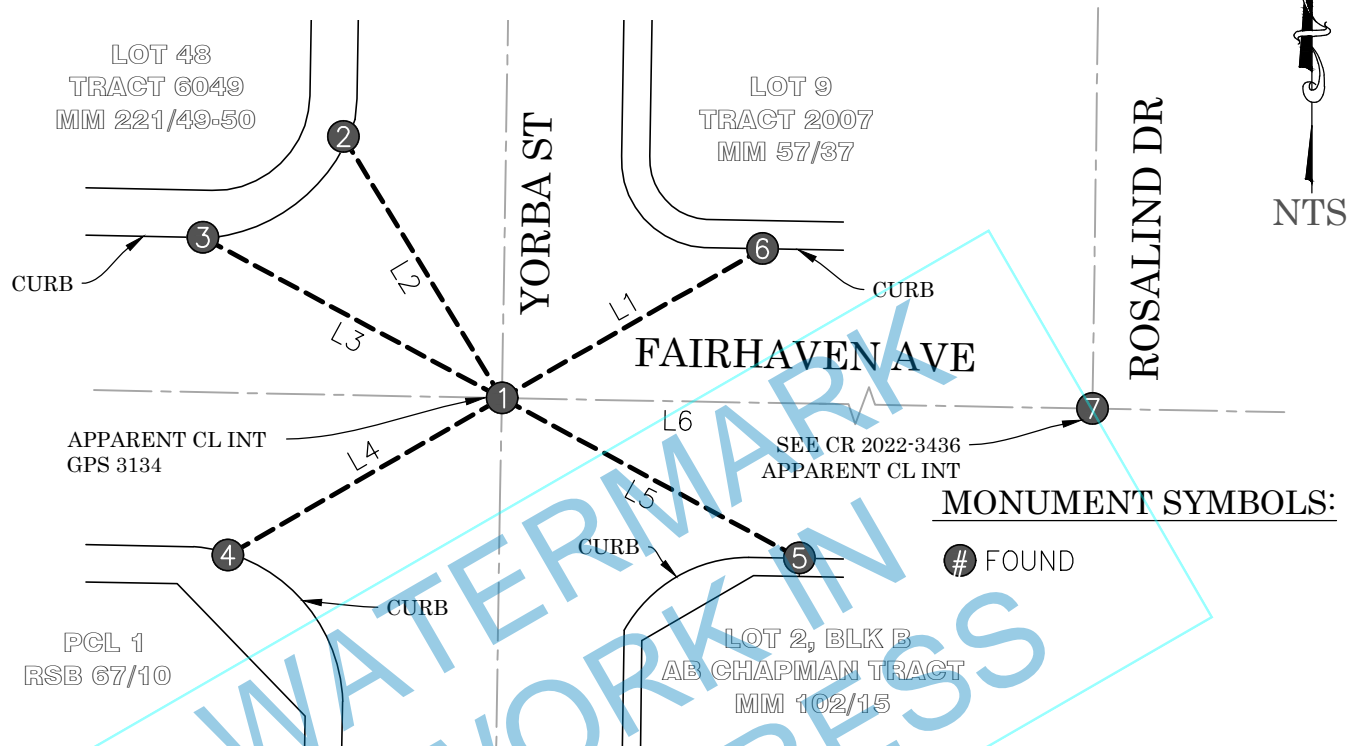
## COUNTY SURVEYOR'S STATEMENT

This Corner Record was received \_\_\_\_\_  
and examined and filed \_\_\_\_\_

Signed \_\_\_\_\_ (P.L.S.) or R.C.E. No. 8970Title DEPUTY COUNTY SURVEYOR

County Surveyor's Comment PRIOR TO CONSTRUCTION, A 2-1/4" DISK STAMPED "OCS 10-73" WAS FOUND IN A MONUMENT WELL. DUE TO TRAFFIC SAFETY CONCERNS, THE WELL WAS NOT OPENED AFTER CONSTRUCTION, BUT ALL TIE POINTS WERE VERIFIED USING THE ORIGINAL PROJECT CONTROL NETWORK, AS SHOWN ON PAGE 2 OF THIS DOCUMENT

## POST-CONSTRUCTION CORNER RECORD

**LEGEND:**

- - - - REF LINE 1: APPARENT CENTERLINE  
 - - - - REF LINE 2: TIE LINES  
 - - - - REF LINE 3: MEAS BETWEEN MONUMENTS  
 OCS ORANGE COUNTY SURVEYOR

**RECORD REFERENCES:**

- R1 CORNER RECORD 2021-0720  
 R2 CORNER RECORD 2015-1239  
 R3 OCS A/4-9/1013-1020 (PG 1017)

**LINE TABLE**

LINE #	RECORD BEARING	RECORD DISTANCE	REF
L1	N60°11'50"E	62.63'	R1
L2	N31°11'40"W	63.68'	R1
L3	N61°44'53"W	70.73'	R1
L4	N60°10'22"E	65.78'	R1
L5	N61°44'22"W	70.44'	R1
L6	N/A	267.01'	R1

**MONUMENT NOTES:**

- ① PRIOR TO CONST, FD 2-1/4" ALUM DISK STMPD "OCS 10-73", PER R3; DN 1.2' IN MONUMENT WELL; DUE TO TRAFFIC SAFETY CONCERNS, WELL WAS NOT OPENED AFTER CONST, BUT ALL TIE POINTS WERE VERIFIED USING THE ORIGINAL PROJECT CONTROL NETWORK
- ② FD LEAD & 3/4" BR TAG STMPD "PLS 9305 TIE PT" ON TOP OF CONC CURB, PER R1
- ③ FD LEAD & 3/4" BR TAG STMPD "RCE 16556" ON TOP OF CONC CURB, PER R2
- ④ FD LEAD & 3/4" BR TAG STMPD "OCS TIE" ON TOP OF CONC CURB, PER R2
- ⑤ FD LEAD & 3/4" BR TAG STMPD "LS 5411" ON TOP OF CONC CURB, PER R2
- ⑥ FD LEAD & HOLE ON TOP OF CONC CURB, FITS POSITION OF TAG STMPD "LS 5411" PER R2; ADDED 3/4" BR TAG STMPD "OCS TIE"
- ⑦ FD MONUMENT AS DESCRIBED ON ADJACENT CORNER RECORD