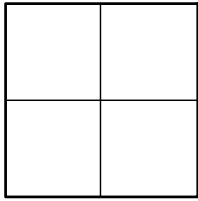


CORNER RECORD

Agency Index _____

Document Number _____

CR 2023-0013

City of UNINCORPORATED TERRITORYCounty of ORANGE, CaliforniaBrief Legal Description ALONG REDBERRY RD: AT THE APPARENT PRC, +/- 79' NW'LY OF EVENINGSIDE DR**CORNER TYPE**

- | | |
|--|---|
| <input type="checkbox"/> Government Corner | <input type="checkbox"/> Control |
| <input type="checkbox"/> Meander | <input type="checkbox"/> Property |
| <input type="checkbox"/> Rancho | <input checked="" type="checkbox"/> Other |

Date of Survey 10-19-2022**COORDINATES (Optional)**

N. _____ E. _____

Elevation _____

Units Metric ☐ U.S. Survey Foot ☒

Horizontal Datum _____

Zone _____ Epoch Date _____

Vertical Datum _____

☐ Complies with Public Resources Code §§8801-8819☐ Complies with Public Resources Code §§8890-8902PLS Act Ref: ☐ 8765(d)☒ 8771☐ 8773☐ Other: _____Corner/ ☐ Left as found☐ Established☐ Rebuilt☐ Pre-ConstructionMonument: ☐ Found and tagged☒ Reestablished☐ Referenced☒ Post-Construction

Narrative of corner identified and monument as found, set, reset, replaced, or removed:

☒ See sheet #2 for description (s):

NO CLAIM IS MADE AS TO THE RELATIONSHIP OF THE POINTS SHOWN HEREON TO TRUE BOUNDARY LOCATIONS. RIGHT OF WAY, PARCEL, OR LOT LINES, OR ANY OTHER DATA RELATED TO DELINEATION OF PROPERTY RIGHTS ARE DISPLAYED FOR GRAPHICAL REPRESENTATION ONLY.

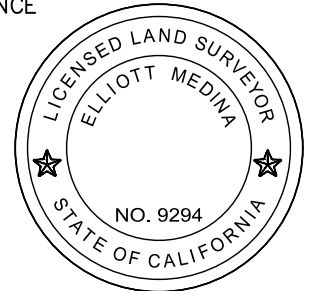
BEARINGS SHOWN HEREON ARE ASSUMED AND ARE DISPLAYED FOR ANGULAR RELATIONSHIP ONLY.

MEASURED DISTANCES SHOWN HEREON ARE GRID DISTANCES, DERIVED BY INVERSE FROM POSITIONS ESTABLISHED BY A FULLY REDUNDANT LEAST SQUARES NETWORK ADJUSTMENT. ALL POINTS WERE EITHER TRAVERSED THROUGH OR DOUBLE DETERMINED, PER CHAPTERS 5 & 11 OF THE OC SURVEY STANDARDS MANUAL. TO OBTAIN A GROUND DISTANCE, MULTIPLY A GRID DISTANCE BY 1.00002260.

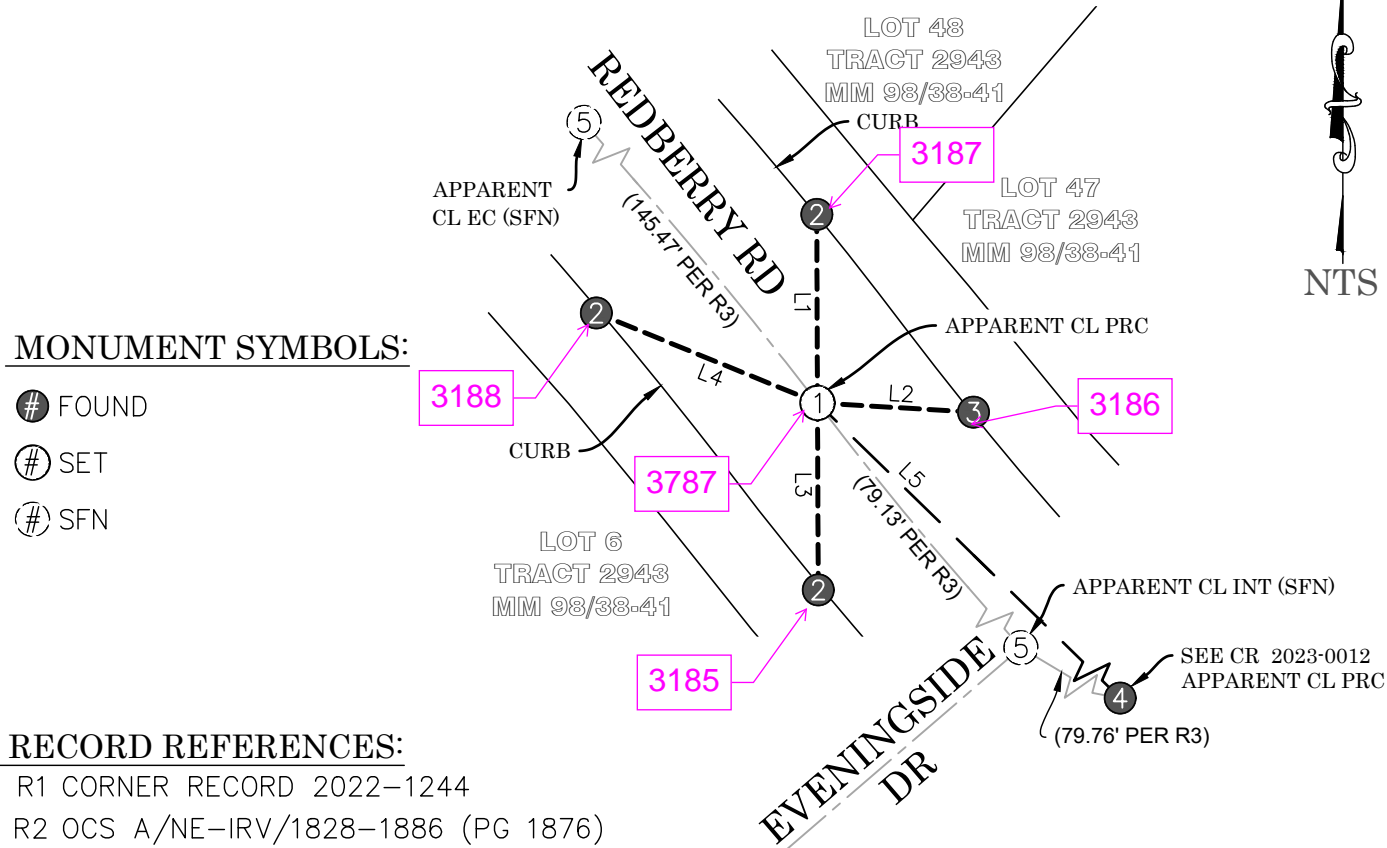
RECORD DISTANCES SHOWN HEREON ARE AS THEY APPEAR ON THE DOCUMENT OF RECORD. DISTANCES MAY BE EITHER GRID OR GROUND, AS PER SAID RECORD. ALL DISTANCES WERE FIELD VERIFIED USING ELECTRONIC DISTANCE MEASUREMENTS.

SURVEYOR'S STATEMENT

This Corner Record was prepared by me or under my direction in conformance with

the Professional Land Surveyors' Act on 02-14-2023Signed Elliott Medina (P.L.S.) or R.C.E. No. 9294**COUNTY SURVEYOR'S STATEMENT**This Corner Record was received 02-14-2023and examined and filed 11-13-2023Signed Michael LaFontaine (P.L.S.) or R.C.E. No. 8970Title DEPUTY COUNTY SURVEYOR

County Surveyor's Comment _____

POST-CONSTRUCTION CORNER RECORD**MONUMENT SYMBOLS:**

- ⊙ FOUND
- ⊙ SET
- ⊙ SFN

RECORD REFERENCES:

- R1 CORNER RECORD 2022-1244
- R2 OCS A/NE-IRV/1828-1886 (PG 1876)
- R3 TRACT 2943, MM 98/38-41

LEGEND:

- — — REF LINE 1: APPARENT CENTERLINE
- — — REF LINE 2: TIE LINES
- — — REF LINE 3: MEAS BETWEEN MONUMENTS
- OCS ORANGE COUNTY SURVEYOR
- SFN SEARCHED, FOUND NOTHING
- GRAY LINE NON-MEASURED LINE

LINE TABLE

LINE #	MEAS & REC BEARING	MEAS & REC DISTANCE	REF
L1	N00°12'16"W	29.44'	R1
L2	N86°35'33"W	24.41'	R1
L3	N00°15'10"W	29.24'	R1
L4	N67°52'30"W	37.32'	R1
L5 CHORD	N45°43'11"W	158.34'	R1

MONUMENT NOTES:

- ① SEARCHED, FD NOTHING; SET SPIKE & 1-1/2" SS WSHR STMPD "OCS", FLUSH IN AC, PER TIES AS SHOWN HEREON
- ② FD LEAD & 3/4" BR TAG STMPD "OCS TIE" ON TOP OF CONC CURB, PER R2
- ③ FD LEAD & 3/4" BR TAG STMPD "OCS TIE" ON TOP OF CONC CURB, PER R1
- ④ FD MONUMENT AS DESCRIBED ON ADJACENT CORNER RECORD
- ⑤ APPARENT CL INTERSECTION; SFN