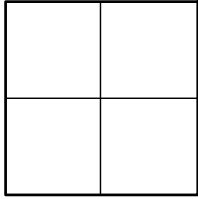


CORNER RECORD

Agency Index _____

Document Number _____

CR 2023-0014

City of UNINCORPORATED TERRITORYCounty of ORANGE, CaliforniaBrief Legal Description ALONG BROWNING AVE: AT THE APPARENT INT OF MCLEAN DR, & AT THE APPARENT SW'LY & NE'LY BOUNDARIES OF TRACT 8084, +/- 10' SW'LY & +/- 650' NE'LY OF SAID INT**CORNER TYPE**

- | | |
|--|---|
| <input type="checkbox"/> Government Corner | <input type="checkbox"/> Control |
| <input type="checkbox"/> Meander | <input type="checkbox"/> Property |
| <input type="checkbox"/> Rancho | <input checked="" type="checkbox"/> Other |

Date of Survey 10-20-2022**COORDINATES (Optional)**

N. _____ E. _____

Elevation _____

Units Metric ☐ U.S. Survey Foot ☒

Horizontal Datum _____

Zone _____ Epoch Date _____

Vertical Datum _____

☐ Complies with Public Resources Code §§8801-8819☐ Complies with Public Resources Code §§8890-8902PLS Act Ref: ☐ 8765(d)☒ 8771☐ 8773☐ Other: _____Corner/ ☒ Left as found☐ Established☐ Rebuilt☐ Pre-ConstructionMonument: ☐ Found and tagged☒ Reestablished☐ Referenced☒ Post-Construction

Narrative of corner identified and monument as found, set, reset, replaced, or removed:

☒ See sheet #2 for description (s):

NO CLAIM IS MADE AS TO THE RELATIONSHIP OF THE POINTS SHOWN HEREON TO TRUE BOUNDARY LOCATIONS. RIGHT OF WAY, PARCEL, OR LOT LINES, OR ANY OTHER DATA RELATED TO DELINEATION OF PROPERTY RIGHTS ARE DISPLAYED FOR GRAPHICAL REPRESENTATION ONLY.

BEARINGS SHOWN HEREON ARE ASSUMED AND ARE DISPLAYED FOR ANGULAR RELATIONSHIP ONLY.

MEASURED DISTANCES SHOWN HEREON ARE GRID DISTANCES, DERIVED BY INVERSE FROM POSITIONS ESTABLISHED BY A FULLY REDUNDANT LEAST SQUARES NETWORK ADJUSTMENT. ALL POINTS WERE EITHER TRAVERSED THROUGH OR DOUBLE DETERMINED, PER CHAPTERS 5 & 11 OF THE OC SURVEY STANDARDS MANUAL. TO OBTAIN A GROUND DISTANCE, MULTIPLY A GRID DISTANCE BY 1.00002235.

RECORD DISTANCES SHOWN HEREON ARE AS THEY APPEAR ON THE DOCUMENT OF RECORD. DISTANCES MAY BE EITHER GRID OR GROUND, AS PER SAID RECORD. ALL DISTANCES WERE FIELD VERIFIED USING ELECTRONIC DISTANCE MEASUREMENTS.

SURVEYOR'S STATEMENT

This Corner Record was prepared by me or under my direction in conformance with

the Professional Land Surveyors' Act on 02-14-2023Signed Elliott Medina (P.L.S.) or R.C.E. No. 9294**COUNTY SURVEYOR'S STATEMENT**This Corner Record was received 02-14-2023and examined and filed 11-13-2023Signed Michael LaFontaine (P.L.S.) or R.C.E. No. 8970Title DEPUTY COUNTY SURVEYOR

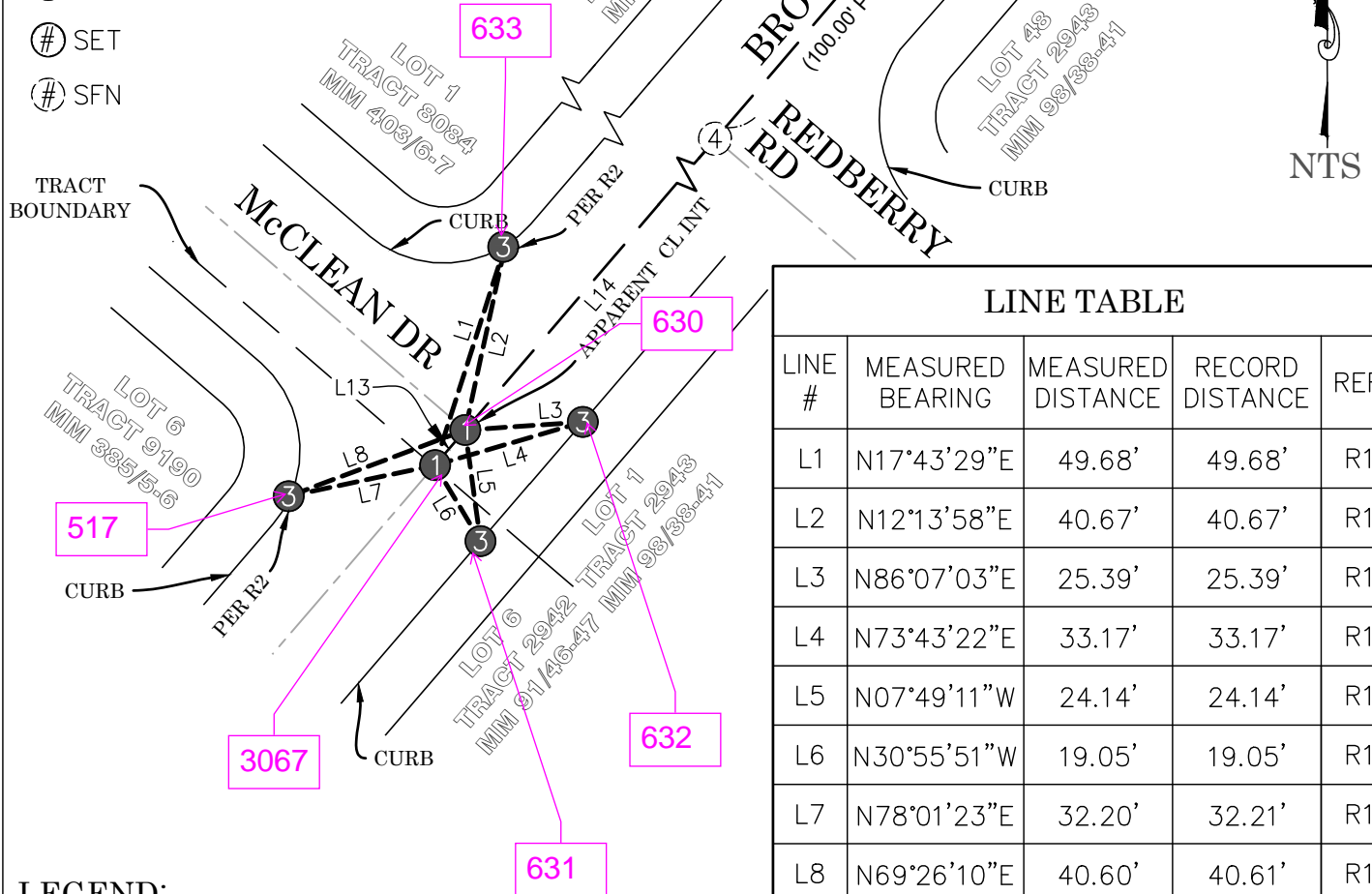
County Surveyor's Comment _____

POST-CONSTRUCTION CORNER RECORD**RECORD REFERENCES:**

R1 CORNER RECORD 2021-1468
 R2 CORNER RECORD 2015-0946
 R3 CORNER RECORD 2015-0950
 R4 OCS A/NE-IRV/1828-1886 (PGS 1849 & 1850)
 R5 TRACT 8084, MM 403/6-7

MONUMENT SYMBOLS:

- # FOUND
 # SET
 # SFN

**LINE TABLE**

LINE #	MEASURED BEARING	MEASURED DISTANCE	RECORD DISTANCE	REF
L1	N17°43'29"E	49.68'	49.68'	R1
L2	N12°13'58"E	40.67'	40.67'	R1
L3	N86°07'03"E	25.39'	25.39'	R1
L4	N73°43'22"E	33.17'	33.17'	R1
L5	N07°49'11"W	24.14'	24.14'	R1
L6	N30°55'51"W	19.05'	19.05'	R1
L7	N78°01'23"E	32.20'	32.21'	R1
L8	N69°26'10"E	40.60'	40.61'	R1
L9	N15°33'59"W	21.87'	21.87'	R1
L10	N83°29'04"W	21.94'	21.94'	R1
L11	N15°48'54"W	21.84'	21.84'	R1
L12	N83°31'59"W	22.08'	22.08'	R1
L13	N40°39'35"E	9.99'	9.99'	R1
L14	N40°37'56"E	650.19'	650.20'	R1

LEGEND:

- — — REF LINE 1: APPARENT CENTERLINE
 - - - REF LINE 2: TIE LINES
 — — — REF LINE 3: MEAS BETWEEN MONUMENTS
 OCS ORANGE COUNTY SURVEYOR
 SFN SEARCHED, FOUND NOTHING

MONUMENT NOTES:

- ① FD SPIKE & 1-1/2" BR WSHR STMPD "OCS", PER R1, FLUSH IN AC
 ② SEARCHED, FD NOTHING; FILLED SEARCH HOLE WITH CONC AND SET SPIKE & 1-1/2" SS WSHR STMPD "OCS", FLUSH WITH AC SURFACE, PER TIES AS SHOWN HEREON
 ③ FD LEAD & 3/4" BR TAG STMPD "OCS TIE" ON TOP OF CONC CURB, PER R4, UNLESS OTHERWISE NOTED
 ④ APPARENT CL INTERSECTION; SFN