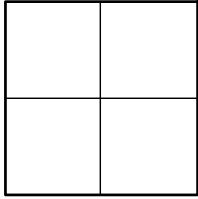


CORNER RECORD

Agency Index _____

Document Number _____

CR 2022-0546

City of UNINCORPORATED TERRITORYCounty of ORANGE, CaliforniaBrief Legal Description AT THE INTERSECTION OF LA COLINA DR & SINGING WOOD DR**CORNER TYPE**

- | | |
|--|---|
| <input type="checkbox"/> Government Corner | <input type="checkbox"/> Control |
| <input type="checkbox"/> Meander | <input type="checkbox"/> Property |
| <input type="checkbox"/> Rancho | <input checked="" type="checkbox"/> Other |

Date of Survey 01/19/2022**COORDINATES (Optional)**

N. _____ E. _____

Elevation _____

Units Metric ☐ U.S. Survey Foot ☒

Horizontal Datum _____

Zone _____ Epoch Date _____

Vertical Datum _____

☐ Complies with Public Resources Code §§8801-8819☐ Complies with Public Resources Code §§8890-8902PLS Act Ref: ☐ 8765(d)☒ 8771☐ 8773☐ Other: _____Corner/ ☒ Left as found☐ Established☐ Rebuilt☐ Pre-ConstructionMonument: ☐ Found and tagged☐ Reestablished☒ Referenced☒ Post-Construction

Narrative of corner identified and monument as found, set, reset, replaced, or removed:

☒ See sheet #2 for description (s):

THE PURPOSE OF THIS RECORD IS TO DOCUMENT THE PERPETUATION OF FOUND MONUMENT(S) PURSUANT TO THE PLS ACT SECTION 8771. NO CLAIM IS MADE AS TO THE RELATIONSHIP OF THE POINTS SHOWN HEREON TO TRUE BOUNDARY LOCATIONS. RIGHT OF WAY, PARCEL, OR LOT LINES, OR ANY OTHER DATA RELATED TO DELINEATION OF PROPERTY RIGHTS ARE DISPLAYED FOR GRAPHICAL REPRESENTATION ONLY.

BEARINGS SHOWN HEREON ARE ASSUMED AND ARE DISPLAYED FOR ANGULAR RELATIONSHIP ONLY.

MEASURED DISTANCES SHOWN HEREON ARE GRID DISTANCES. TO OBTAIN A GROUND DISTANCE, MULTIPLY A GRID DISTANCE BY 1.00002262.

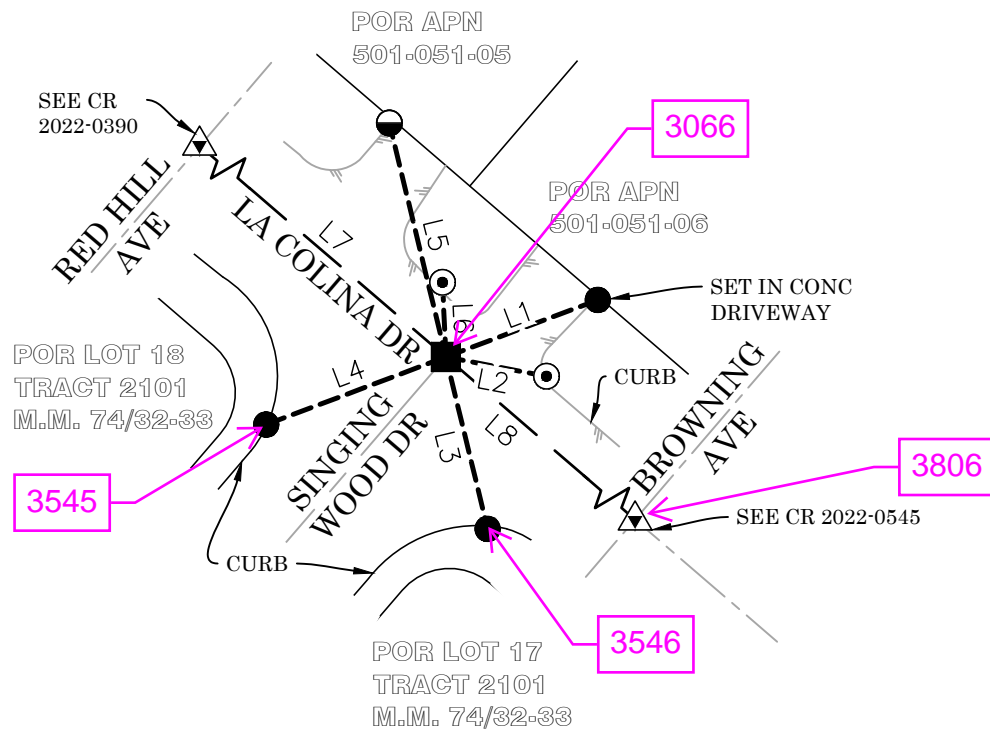
RECORD DISTANCES SHOWN HEREON ARE AS THEY APPEAR ON THE DOCUMENT OF RECORD. DISTANCES MAY BE EITHER GRID OR GROUND, AS PER SAID RECORD.

SURVEYOR'S STATEMENT

This Corner Record was prepared by me or under my direction in conformance with

the Professional Land Surveyors' Act on 5-17-2022Signed Roy Macias (P.L.S.) or R.C.E. No. 9501**COUNTY SURVEYOR'S STATEMENT**This Corner Record was received May 17, 2022and examined and filed May 23, 2022Signed Kevin R. Hills (P.L.S.) or R.C.E. No. 6617Title COUNTY SURVEYOR

County Surveyor's Comment THE MONUMENT FOUND AND REFERENCED ON PAGE 2 OF THIS DOCUMENT WAS SET AFTER COMPLETION OF CONSTRUCTION ACTIVITIES IN 2014 PER TIES SHOWN ON PRE-CONSTRUCTION CORNER RECORD 2014-0322, HOWEVER NO POST-CONSTRUCTION CORNER RECORD WAS FILED AT THAT TIME.

POST-CONSTRUCTION CORNER RECORD**LINE TABLE**

LINE #	MEAS & REC BEARING	MEAS & REC DISTANCE	REF
L1	N69°24'59"E	33.80'	R1
L2	N79°04'51"W	21.34'	R1
L3	N13°37'11"W	36.88'	R1
L4	N69°22'57"E	40.00'	R1
L5	N13°35'23"W	50.15'	R1
L6	N02°37'31"W	15.54'	R1
L7	N49°18'34"W	2377.94'	R1
L8	N49°19'13"W	264.78'	R1

LEGEND:

- — — REF LINE 1: APPARENT CENTERLINE
- REF LINE 2: TIE LINES
- — — REF LINE 3: MEAS BETWEEN MONUMENTS
- — — REF LINE 4: EDGE OF PAVEMENT
- OCS ORANGE COUNTY SURVEYOR

RECORD REFERENCES:

R1 CORNER RECORD 2021-1804
R2 CORNER RECORD 2014-0322

MONUMENT NOTES:

- FD SPIKE & 1-1/2" BR WSHR STMPD "OCS", PER R1, FLUSH IN AC; FITS POSITION OF MON FD PER R2 (SEE COUNTY SURVEYOR'S COMMENT ON PAGE 1)
- FD LEAD & 3/4" BR TAG STMPD "OCS TIE" ON TOP OF CONC CURB, UNLESS OTHERWISE NOTED, PER R2
- ⊙ FD CONC NAIL & 3/4" BR TAG STMPD "OCS TIE", FLUSH IN AC DRIVEWAY, PER R2
- ⊙ FD 1" IP W/CONC PLUG & 3/4" BR TAG STAMPED "OCS TIE", DN 0.1' IN DIRT, PER R1
- △ FD MON AS DESCRIBED ON ADJACENT CORNER RECORD