

CORNER RECORD

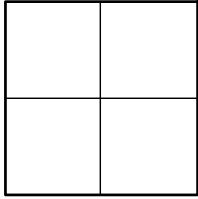
Agency Index _____

Document Number

CR 2022-0544

City of UNINCORPORATED TERRITORY

County of ORANGE, California

Brief Legal Description ALONG BROWNING AVE: +/- 635' NE'LY OF RAINBOW DR, AT THE N'LY COR OF
THE W'LY 1/4 OF LOT 340, BLK 43 OF THE IRVINE SUBDIVISION

CORNER TYPE

- ☐ Government Corner ☐ Control
☐ Meander ☐ Property
☐ Rancho ☒ Other

Date of Survey 01/19/2022

COORDINATES (Optional)

N. _____ E. _____

Elevation _____

Units Metric ☐ U.S. Survey Foot ☒

Horizontal Datum _____

Zone _____ Epoch Date _____

Vertical Datum _____

☐ Complies with Public Resources Code §§8801-8819☐ Complies with Public Resources Code §§8890-8902PLS Act Ref: ☐ 8765(d)☒ 8771☐ 8773☐ Other:Corner/ ☐ Left as found☐ Established☐ Rebuilt☐ Pre-ConstructionMonument: ☐ Found and tagged☒ Reestablished☐ Referenced☒ Post-Construction

Narrative of corner identified and monument as found, set, reset, replaced, or removed:

☒ See sheet #2 for description (s):

THE PURPOSE OF THIS RECORD IS TO DOCUMENT THE PERPETUATION OF FOUND MONUMENT(S) PURSUANT TO THE PLS ACT SECTION 8771. NO CLAIM IS MADE AS TO THE RELATIONSHIP OF THE POINTS SHOWN HEREON TO TRUE BOUNDARY LOCATIONS. RIGHT OF WAY, PARCEL, OR LOT LINES, OR ANY OTHER DATA RELATED TO DELINEATION OF PROPERTY RIGHTS ARE DISPLAYED FOR GRAPHICAL REPRESENTATION ONLY.

BEARINGS SHOWN HEREON ARE ASSUMED AND ARE DISPLAYED FOR ANGULAR RELATIONSHIP ONLY.

MEASURED DISTANCES SHOWN HEREON ARE GRID DISTANCES. TO OBTAIN A GROUND DISTANCE, MULTIPLY A GRID DISTANCE BY 1.00002202.

RECORD DISTANCES SHOWN HEREON ARE AS THEY APPEAR ON THE DOCUMENT OF RECORD. DISTANCES MAY BE EITHER GRID OR GROUND, AS PER SAID RECORD.

SURVEYOR'S STATEMENT

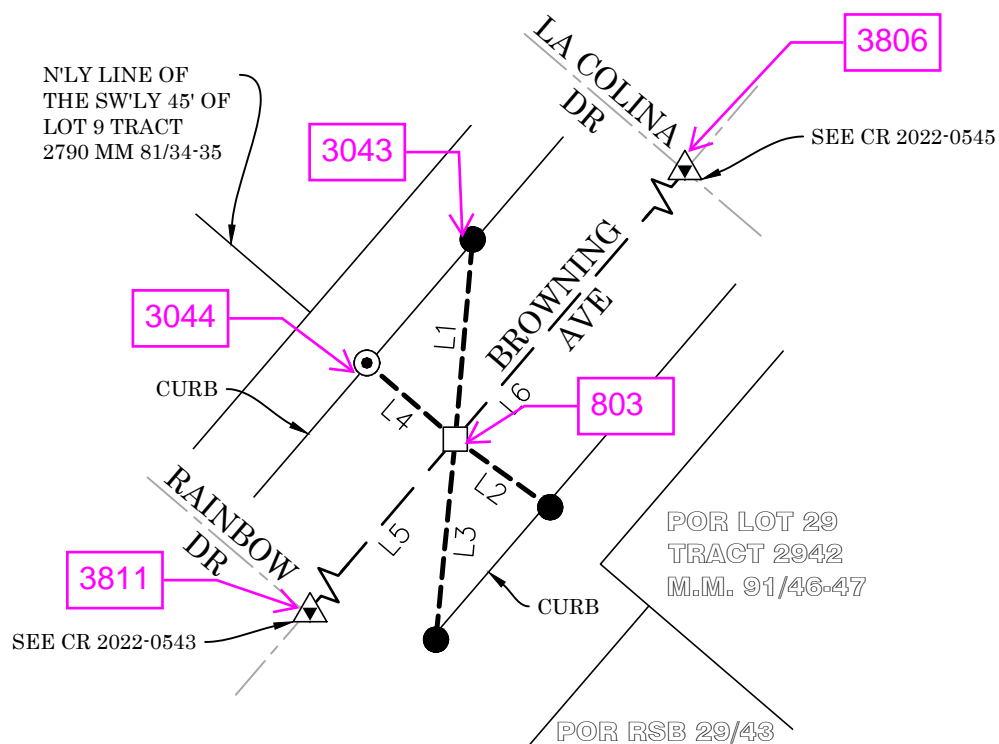
This Corner Record was prepared by me or under my direction in conformance with

the Professional Land Surveyors' Act on 5-17-2022Signed Roy Macias (P.L.S.) or R.C.E. No. 9501

COUNTY SURVEYOR'S STATEMENT

This Corner Record was received May 17, 2022and examined and filed May 23, 2022Signed Kevin R. Hills (P.L.S.) or R.C.E. No. 6617Title COUNTY SURVEYOR

County Surveyor's Comment _____

POST-CONSTRUCTION CORNER RECORD**LINE TABLE**

LINE #	MEAS & REC BEARING	MEAS & REC DISTANCE	REF
L1	N04°57'21"E	31.31'	R1
L2	N54°16'13"W	18.25'	R1
L3	N05°32'02"E	31.49'	R1
L4	N49°18'21"W	18.23'	R1
L5	N40°38'40"E	635.17'	R1
L6	N40°39'18"E	659.91'	R1

LEGEND:

- REF LINE 1: APPARENT CENTERLINE
- REF LINE 2: TIE LINES
- REF LINE 3: MEAS BETWEEN MONUMENTS
- OCS ORANGE COUNTY SURVEYOR

RECORD REFERENCES:

R1 CORNER RECORD 2021-1802

MONUMENT NOTES:

- ☐ SEARCHED, FOUND NOTHING; SET SPIKE & 1-1/2" SS WSHR STMPD "OCS", FLUSH IN AC, PER TIES SHOWN HEREON
- FD LEAD & 3/4" BR TAG STMPD "OCS TIE" ON TOP OF CONC CURB, PER R1
- ⊙ FD LEAD & 3/4" BR TAG STMPD "LS 7714" ON TOP OF CONC CURB, PER R1
- △ FD MON AS DESCRIBED ON ADJACENT CORNER RECORD