

SCALE 1" = 40'

ORIGINAL

SHEET 1 OF 3 SHEETS

# TRACT NO 2806

IN THE UNINCORPORATED TERRITORY OF THE COUNTY OF ORANGE, STATE OF CALIFORNIA

BEING A SUBDIVISION OF A PORTION OF BLOCKS 42 AND 43 OF IRVINE'S SUBDIVISION AS SHOWN ON A MAP RECORDED IN BOOK 1, PAGE 88 OF MISCELLANEOUS MAPS OF SAID ORANGE COUNTY.

22 LOTS

MARCH, 1960

13.34 ACRES

HUGH E. HALDERMAN, R.C.E. 8793

WE, THE UNDERSIGNED, BEING ALL PARTIES HAVING ANY RECORD TITLE INTEREST IN THE LAND COVERED BY THIS MAP, HEREBY CONSENT TO THE PREPARATION AND RECORDATION OF SAID MAP AS SHOWN WITHIN THE BLUE COLORED BORDER LINE, AND WE HEREBY OFFER FOR DEDICATION THETA ROAD, OMEGA DRIVE, AND BROWNING AVENUE FOR PUBLIC USE FOR HIGHWAY PURPOSES. WE ALSO OFFER FOR DEDICATION TO THE COUNTY OF ORANGE THE 6' WALKWAY EASEMENT AND THE 10' DRAINAGE EASEMENT AS SHOWN ON THE MAP.

## RED HILL ESTATES

(A PARTNERSHIP)

AN AUTHORIZED AGENT

TITLE INSURANCE AND TRUST COMPANY  
A CORPORATION, AS TRUSTEE

*Ralph J. Hill*  
ASSISTANT SECRETARY

I, HUGH E. HALDERMAN, HEREBY CERTIFY THAT I AM A REGISTERED CIVIL ENGINEER NO. 8793 OF THE STATE OF CALIFORNIA, AND THAT THIS MAP, CONSISTING OF 3 SHEETS, CORRECTLY REPRESENTS A SURVEY MADE UNDER MY SUPERVISION IN APRIL 1959, THAT THE SURVEY IS TRUE AND COMPLETE AS SHOWN, THAT THE MONUMENTS ARE OF THE CHARACTER AND OCCUPY THE POSITIONS INDICATED OR WILL BE SET IN SUCH POSITIONS AND AT SUCH TIME AS AGREED UPON WITH THE COUNTY SURVEYOR, AND THAT SAID MONUMENTS ARE SUFFICIENT TO ENABLE THE SURVEY TO BE RETRACED.

*Hugh E. Halderman*  
R.C.E. NO 8793

STATE OF CALIFORNIA }  
COUNTY OF ORANGE } ss.

ON THIS 17TH DAY OF FEBRUARY, 1960, BEFORE ME, JUANITA KOEHLER, A NOTARY PUBLIC IN AND FOR SAID COUNTY AND STATE, PERSONALLY APPEARED RALPH J. HILL

KNOWN TO ME TO BE ASSISTANT SECRETARY OF TITLE INSURANCE AND TRUST COMPANY, THE CORPORATION THAT EXECUTED THE WITHIN INSTRUMENT AND KNOWN TO ME TO BE THE PERSONS WHO EXECUTED THE WITHIN INSTRUMENT ON BEHALF OF SUCH CORPORATION AND ACKNOWLEDGED TO ME THAT SUCH CORPORATION EXECUTED THE SAME AS TRUSTEE.

*Juanita Koehler*  
NOTARY PUBLIC

MY COMMISSION EXPIRES DEC 20TH, 1963

STATE OF CALIFORNIA }  
COUNTY OF ORANGE } ss.

I, V.A. HEIM, COUNTY AUDITOR-CONTROLLER OF SAID COUNTY OF ORANGE DO HEREBY CERTIFY THAT, ACCORDING TO THE RECORDS OF MY OFFICE, THERE ARE NO LIENS AGAINST THE LAND SHOWN ON THIS MAP, OR ANY PART THEREOF, FOR UNPAID STATE OR COUNTY TAXES OR SPECIAL ASSESSMENTS COLLECTED AS TAXES, EXCEPT TAXES AND SPECIAL ASSESSMENTS COLLECTED AS TAXES NOT YET DUE AND PAYABLE.

DATED THIS 3 DAY OF March 1960

*V.A. Heim*  
COUNTY AUDITOR-CONTROLLER

BY *Helen Kitt*  
DEPUTY

STATE OF CALIFORNIA }  
COUNTY OF ORANGE } ss.

I, L.B. WALLACE, COUNTY CLERK OF ORANGE COUNTY, DO HEREBY CERTIFY TO THE COUNTY RECORDER OF ORANGE COUNTY THAT THE PROVISIONS OF THE SUBDIVISION MAP ACT HAVE BEEN COMPLIED WITH REGARDING DEPOSITS TO SECURE THE PAYMENT OF TAXES AND SPECIAL ASSESSMENTS ON THE LAND COVERED BY THIS MAP.

DATED THIS 19th DAY OF July 1960

*L.B. Wallace*  
COUNTY CLERK

BY *Marguerite K. Harris*  
DEPUTY

STATE OF CALIFORNIA }  
COUNTY OF ORANGE } ss.

I, L.B. WALLACE, COUNTY CLERK AND EX-OFFICIO CLERK OF THE BOARD OF SUPERVISORS OF SAID COUNTY OF ORANGE, DO HEREBY CERTIFY THAT THIS MAP WAS PRESENTED FOR APPROVAL TO THE BOARD OF SUPERVISORS OF SAID COUNTY OF ORANGE AT A REGULAR MEETING THEREOF, HELD ON THE DAY OF 1960, AND THAT THEREUPON SAID BOARD DID, BY AN ORDER DULY PASSED AND ENTERED, APPROVE SAID MAP AND DID ACCEPT, ON BEHALF OF THE PUBLIC, THE OFFER OF DEDICATION OF THETA ROAD, OMEGA DRIVE, AND BROWNING AVENUE AS PUBLIC HIGHWAYS, AND THE DRAINAGE AND WALKWAY EASEMENTS AS DEDICATED.

DATED THIS 19th DAY OF July 1960

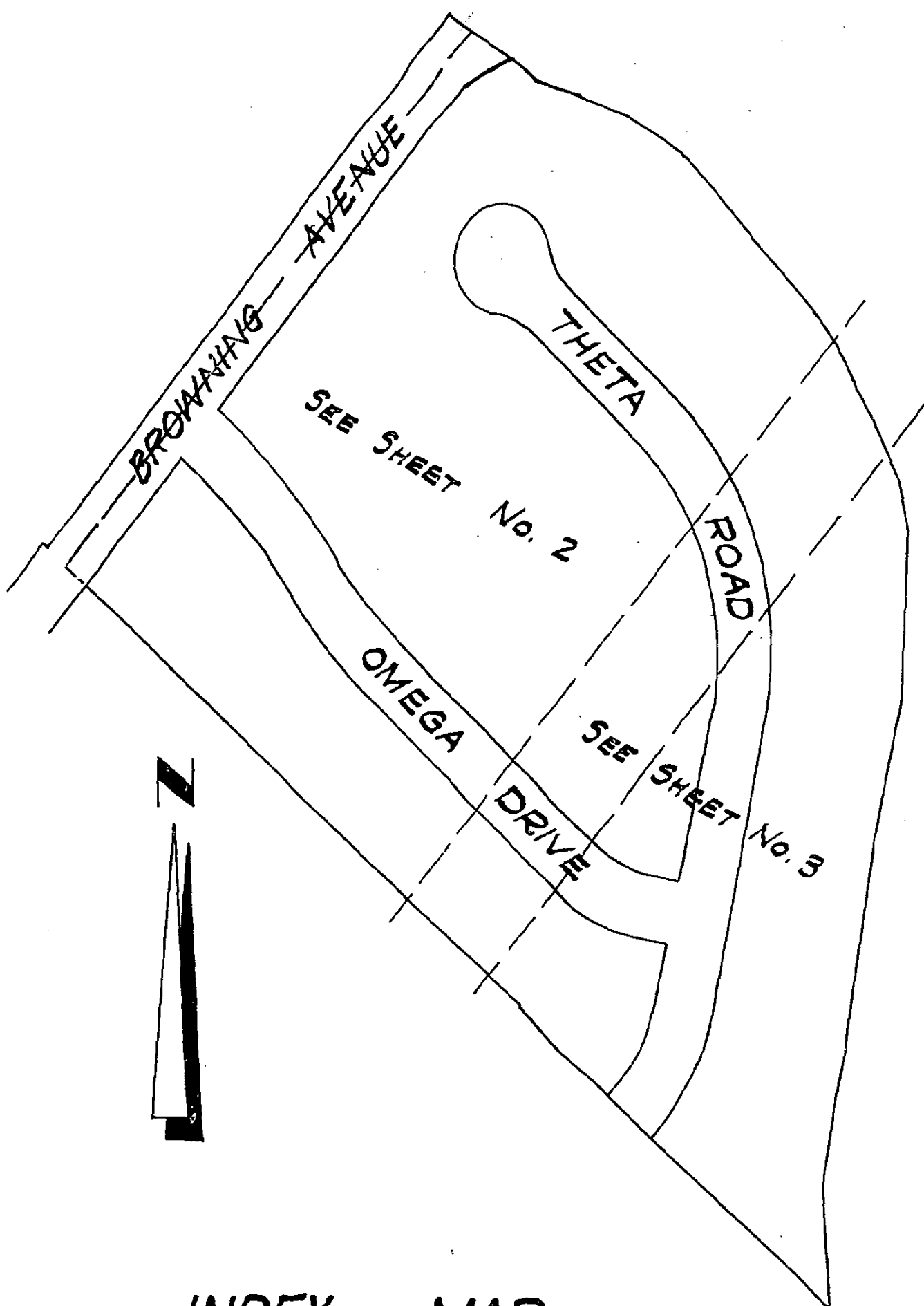
*L.B. Wallace*  
COUNTY CLERK AND EX-OFFICIO  
CLERK OF THE BOARD OF SUPERVISORS

BY *Marguerite K. Harris*  
DEPUTY

I, ALLEN S. KOCH, COUNTY SURVEYOR OF ORANGE COUNTY, DO HEREBY CERTIFY THAT I HAVE EXAMINED THIS MAP AND HAVE FOUND IT TO BE SUBSTANTIALLY THE SAME AS THE TENTATIVE MAP AS FILED, AMENDED, AND APPROVED BY THE ORANGE COUNTY PLANNING COMMISSION; THAT ALL PROVISIONS OF THE SUBDIVISION MAP ACT AND COUNTY SUBDIVISION REGULATIONS HAVE BEEN COMPLIED WITH, AND I AM SATISFIED SAID MAP IS TECHNICALLY CORRECT.

DATED THIS 18 DAY OF July 1960

*Allen S. Koch*  
COUNTY SURVEYOR  
BY *Deputy*  
DEPUTY COUNTY SURVEYOR



INDEX MAP  
SCALE 1" = 200'

STATE OF CALIFORNIA }  
COUNTY OF ORANGE } ss.

ON THIS 13th DAY OF July 1960, BEFORE ME, L.M. LUMEDIN, A NOTARY PUBLIC IN AND FOR SAID COUNTY AND STATE, PERSONALLY APPEARED JOHN M. SHERMAN KNOWN TO ME TO BE AN AUTHORIZED AGENT OF RED HILL ESTATES, THE PARTNERSHIP THAT EXECUTED THE WITHIN INSTRUMENT, AND ACKNOWLEDGED TO ME THAT HE EXECUTED THE SAME FOR AND ON BEHALF OF SAID PARTNERSHIP AND THAT SAID PARTNERSHIP EXECUTED THE SAME.

*L.M. Lumedin*  
NOTARY PUBLIC

MY COMMISSION EXPIRES 2/6/1963

## MONUMENT NOTE

SET 2" IRON PIPE BEARING COPPER TAG MARKED "RCE 8793" AT ALL TRACT CORNERS.

SET 1" IRON PIPE BEARING COPPER TAG MARKED "RCE 8793" AT ALL LOT CORNERS.

SET 2" IRON PIPE IN SUBGRADE, 8" BELOW SURFACE, TAGGED "R.C.E. 8793" WITH SPIKE AND WASHER IN FINISHED SURFACE AT ALL CENTER LINE INTERSECTIONS, BEGINNING AND ENDING OF CURVES, TERMINATIONS OF STREETS AND ALLEYS, UNLESS OTHERWISE NOTED. ALL MONUMENTS WILL OCCUPY POSITIONS INDICATED PRIOR TO ACCEPTANCE OF STREET IMPROVEMENTS.

TIES TO CENTER LINE MONUMENTS WILL BE MADE AND A COPY OF SAID TIES FURNISHED TO THE COUNTY SURVEYOR.

## BASIS OF BEARINGS

THE BEARING OF N 39° 59' 35" E OF THE CENTERLINE OF BROWNING AVENUE AS SHOWN ON THE MAP OF TRACT NO. 2943, M.M. 98, 37 TO 41, WAS TAKEN AS THE BASIS OF BEARINGS SHOWN ON THIS MAP.

227592 INDEXED  
ACCEPTED

FILED

JUL 21 1960

BY *Deputy*  
COUNTY CLERK

*Deputy*  
COUNTY CLERK



SCALE 1" = 40'

ORIGINAL

# TRACT NO 2806

IN THE UNINCORPORATED TERRITORY OF THE COUNTY OF ORANGE, STATE OF CALIFORNIA

HUGH E. HALDERMAN, R.C.E. NO 8793

JUNE 1959

PORTION BLOCK 42

IRVINE'S SUBDIVISION

M. M. 1-88

SHEET 2 OF 3 SHEETS

127593 INDEXED

ACCEPTED

FILED

2000 A.M. JUN 21 1959

AT REQUEST OF

FILE RECORDS AND TRACT CORNER

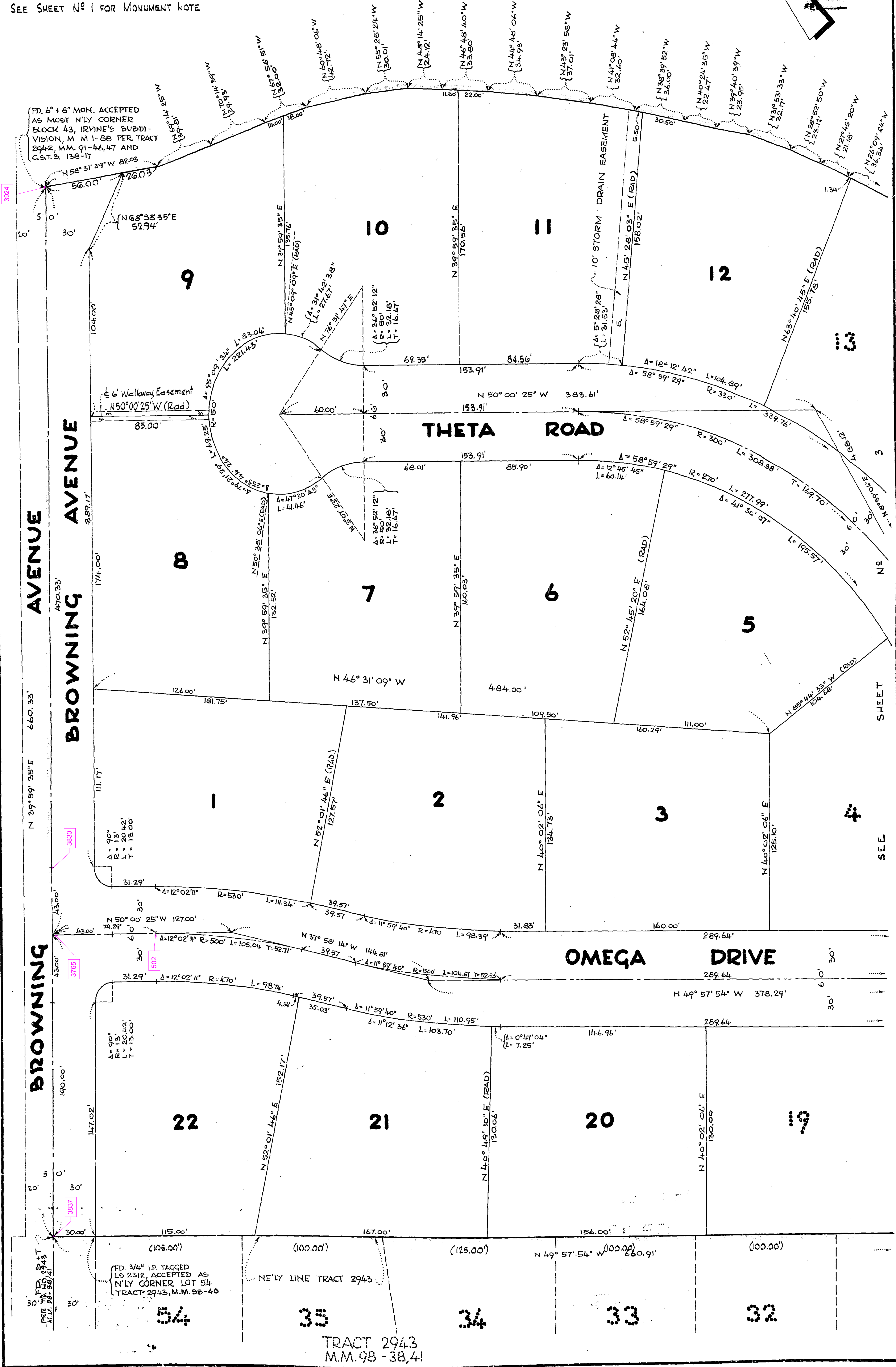
ORANGE COUNTY RECORDS

By M. J. Ireland

\$9.00 COST OF RECORDS

**BASIS OF BEARINGS**  
THE BEARING OF N39°59'35"E OF THE E OF BROWNING AVENUE AS SHOWN ON THE MAP OF TRACT NO. 2943 M.M. 98-37/41, WAS TAKEN AS THE BASIS OF BEARINGS SHOWN ON THIS MAP.

SEE SHEET NO 1 FOR MONUMENT NOTE





SCALE 1" = 40'

ORIGINAL

SHEET 3 OF 3 SHEETS

# TRACT NO 2806

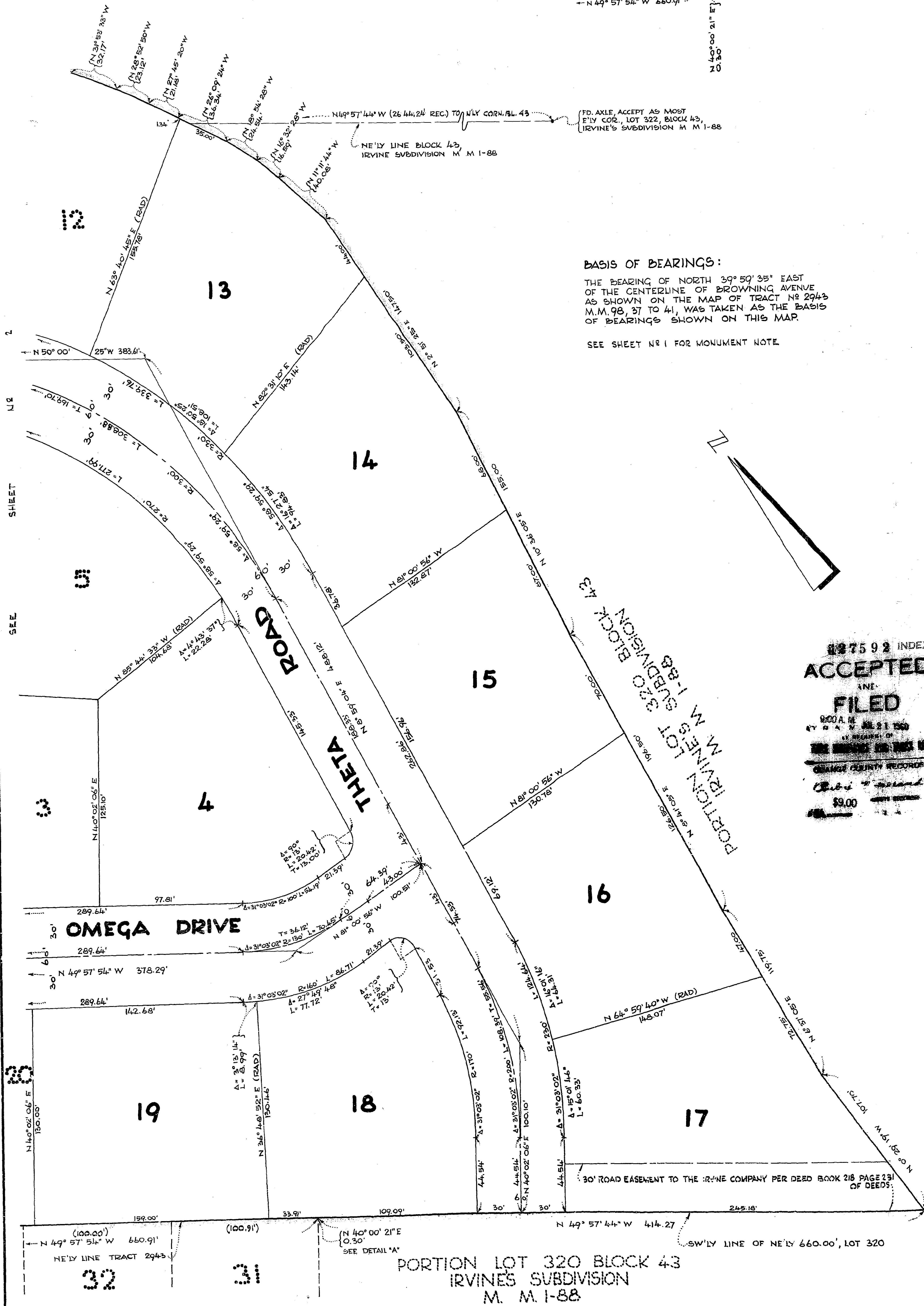
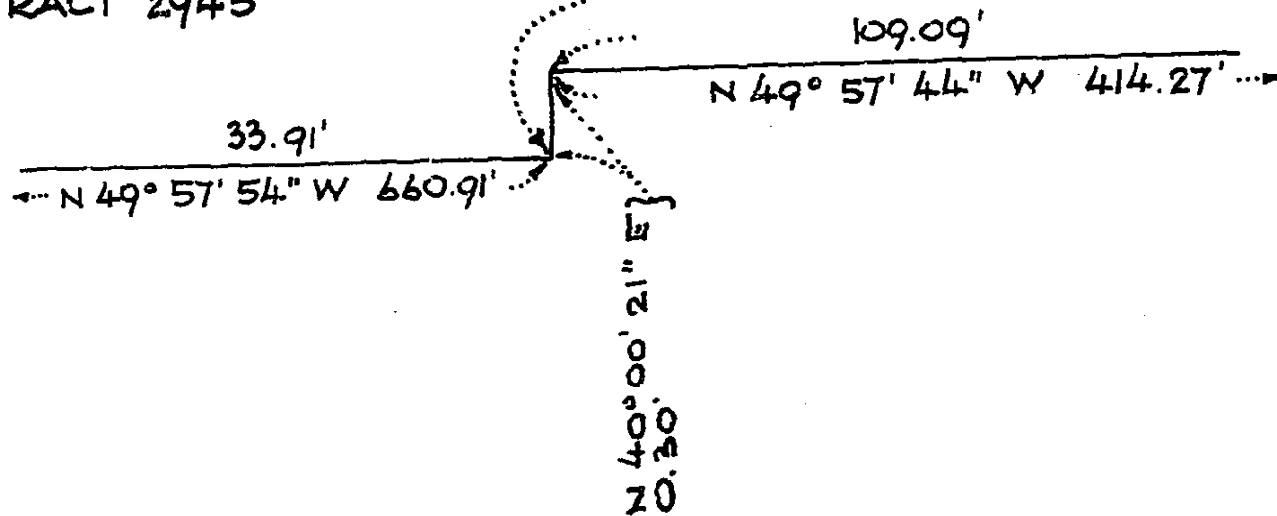
IN THE UNINCORPORATED TERRITORY OF THE COUNTY OF ORANGE, STATE OF CALIFORNIA

HUGH E. HALDERMAN R.C.E. 8793

JUNE 1959

## DETAIL "A"

FD. 2" I.P. TAGGED L.S. 2312  
ACCEPTED AS FLY CORNER  
TRACT 2943



## BASIS OF BEARINGS:

THE BEARING OF NORTH 39° 59' 35" EAST  
OF THE CENTERLINE OF BROWNING AVENUE  
AS SHOWN ON THE MAP OF TRACT NO 2943  
M.M. 98, 37 TO 41, WAS TAKEN AS THE BASIS  
OF BEARINGS SHOWN ON THIS MAP.

SEE SHEET NO 1 FOR MONUMENT NOTE

887592 INDEXED  
ACCEPTED  
FILED  
JUN 21 1959  
COUNTY OF ORANGE  
RECORDS & CLERK  
\$9.00