

ORIGINAL

TRACT No 3520

In Unincorporated Territory County of Orange
State of California

187528 INDEXED

**ACCEPTED
AND
FILED**

Being a Subdivision of a Portion of Lot 318 - Block 13 of IRVINE'S
SUBDIVISION as Recorded in Book 1 page 88 of Miscellaneous Maps
In the Office of the Recorder of the said County of Orange.

AT 9 A. M. NOV 12 1959
AT REQUEST OF

WILE INSURANCE AND TRUST COMPANY
ORANGE COUNTY RECORDS
Coby M. Farland
COUNTY RECORDER
FEE \$7.00

10 Lots
5.02 Acres

JOHN H. SIEGEL
R.C.E. 10770

September 1959
Scale: 1" = 60'

We, the undersigned, being all parties having any record title interest in the land covered by this map, do hereby consent to the preparation and recordation of said map, as shown within the blue-colored border lines; and we do hereby offer for dedication to the Public, for use as Public Highways, SKYLINE DRIVE, BROWNING AVENUE, and OMEGA DRIVE. We also offer for dedication to the County of Orange, the Easement for Drainage purposes (6' wide) across Lots 5 and 6, as shown on this map.

I, John H. Siegel, hereby certify; that I am a Registered Civil Engineer of the State of California, that this map, consisting of two (2) sheets, correctly represents a true and complete survey made under my direction in September, 1959, that the monuments are of the character and occupy the positions indicated or will be set in such positions and at such time as agreed upon with the County Surveyor, and said monuments are sufficient to enable the survey to be retraced.

Richard D. Harrison
RICHARD D. HARRISON
THE IRVINE COMPANY, a Corporation:
W. H. Spurgeon III
ASST. VICE President
Helen R. Harrison
HELEN R. HARRISON
R. S. Hetzel
Asst. Secretary

John H. Siegel
John H. Siegel, R.C.E. 10770

STAN-SHAW CORPORATION, a corporation, Trustee under deed of trust recorded September 2, 1959 in Book 4866- page 333 of Official Records of Orange County, California.

I, A. S. Koch County Surveyor of Orange County, California, do hereby certify: that I have examined this map and have found it to be substantially the same as the Tentative Map as filed, amended and approved by the Orange County Planning Commission; that all provisions of the Subdivision Map Act and County Subdivision Regulations have been complied with; and that I am satisfied that said map is technically correct.
Dated this 6 day of Nov 1959.

William H. Horton
WILLIAM H. HORTON, Asst. Secretary
C.F. Stanwood
C.F. STANWOOD, President

A. S. KOCH
A.S. Koch, County Surveyor
by Devin Lindsey
Deputy

State of California } ss.
County of Orange }
On this 22nd day of October, 1959 before me,
a Notary Public in and for said State and County, personally appeared Richard D. Harrison and Helen R. Harrison known to me to be the persons who executed the within instrument and acknowledged to me they executed the same.

State of California } ss.
County of Orange }
I, V.A. Heim County Auditor-Controller of Orange County, California, do hereby certify: that according to the records of this office, there are no liens against the land shown on this map, or any part thereof for unpaid taxes or special assessments collected as taxes.

Witness my hand and official seal: Velma Hicks
My Commission expires 9-29-63
Notary Public in and for said State and County.
VELMA HICKS

Dated this 6 day of Nov 1959
V. A. HEIM
V.A. Heim County Auditor-Controller
by: Helen Witt
Deputy

State of California } ss.
County of Orange }
On this 23rd day of October 1959 before me,
signed, a Notary Public in and for said state and county, personally appeared C.F. STANWOOD known to me to be President and William H. Horton known to me to be Assistant Secretary of Stan-Shaw Corporation, a corporation, the corporation that executed the within instrument and known to me to be the persons who executed the within instrument on behalf of the corporation herein named, and acknowledged to me that said corporation executed the same.

State of California } ss.
County of Orange }
I, L.B. Wallace County Clerk of Orange County California, do hereby certify to the County Recorder; that the provisions of the Subdivision Map Act have been complied with regarding deposits to secure payment of taxes and special assessments on the land covered by this map.
Dated this 10 day of Nov 1959.

Witness my hand and official seal: Park A. Woods
My commission expires Sept 16 - 1961
Notary Public in and for said State and County.
PARK A. WOODS

L.B. Wallace
L.B. Wallace County Clerk.
by: Wraym A. Sprager
Deputy

State of California } ss.
County of Orange }
On this 23rd day of October 1959 before me,
a Notary Public in and for said state and county, personally appeared W. H. SPURGEON III known to me to be President and R. S. HETZEL known to me to be Assistant Secretary of The Irvine Company, a corporation, the corporation that executed the within instrument and known to me to be the persons who executed the within instrument on behalf of the corporation herein named, and acknowledged to me that said corporation executed the same.

State of California } ss.
County of Orange }
I, L. B. Wallace County Clerk and Ex Officio Clerk of the Board of Supervisors of Orange County, California, do hereby certify: that this map was presented for approval the Board of Supervisors at a regular meeting thereof held on the 10 day of Nov 1959 and that thereupon said Board did, by an order duly passed and entered, approve said map, and did accept, on the public behalf, the offer of dedication, as Public Highways of SKYLINE DRIVE, BROWNING AVENUE, and OMEGA DRIVE, and did also accept the offer of dedication of the Easement for Drainage purposes (6' wide) across Lots 5 and 6 as shown on this map.
Dated this 10 day of Nov 1959.

Witness my hand and official seal: G.H. Thomas
My commission expires Feb 17, 1963 for said State and County.
G.H. Thomas.

L.B. Wallace
L.B. Wallace, County Clerk, Ex Officio
Clerk of the Board of Supervisors.
by: Wraym A. Sprager
Deputy

The signature of the Southern California Edison Company, a corporation, holder of an easement recorded April 2, 1958 in Book 4245 page 169 of Official Records of Orange County, California, was omitted in accordance with Section 11587 of the Business and Professions Code.

L.B. Wallace
L.B. Wallace, County Clerk, Ex Officio
Clerk of the Board of Supervisors.
by: Wraym A. Sprager
Deputy

MONUMENT NOTES
— indicates: Set 2" Iron Pipe bearing a Brass Disc stamped "R.C.E 10770"
A 1" Iron Pipe, bearing a Brass Disc stamped "R.C.E 10770" was set at all Lot Corners within this Tract.
Set 2" Iron Pipe bearing a Brass Disc stamped R.C.E 10770, in sub-grade, at all intersections of Street alley and Way center lines, center line terminations, center line beginning and end of curves, and other points of control, and set Spike and washer on surface, unless otherwise noted.
All monuments shall occupy positions indicated prior to acceptance of street improvements and a copy of the ties to said monuments shall be furnished to the County Surveyor.

BASIS OF BEARINGS
The bearing of the North-easterly line of Tract No 2943, shown as N49°54'50"W on a map thereof recorded in Book 98 page 38-41 of Miscellaneous Maps-Records of Orange County, California, was used as the basis of all bearings shown here on.

ORIGINAL

TRACT No 3520

IN UNINCORPORATED TERRITORY COUNTY OF ORANGE
STATE OF CALIFORNIA

10 Lots
5.02 Acres

JOHN H. SIEGEL
R.C.E. 10770

September 1959
Scale 1" = 60'

187528 INDEXED
ACCEPTED
AND
FILED
AT O. A. N. 2012 1959
AT REQUEST OF
JOHN H. SIEGEL
ORANGE COUNTY RECORDER
Spiby T. Ireland
COUNTY RECORDER
FEE \$7.00

BASIS OF BEARINGS

The bearing of the North-easterly line of TRACT No 2943, shown as N49°54'50"W on a map thereof recorded in Book 98 page 38-41 of Miscellaneous Maps in the office of the Recorder of Orange County, California, was used as the basis of all bearings shown hereon.

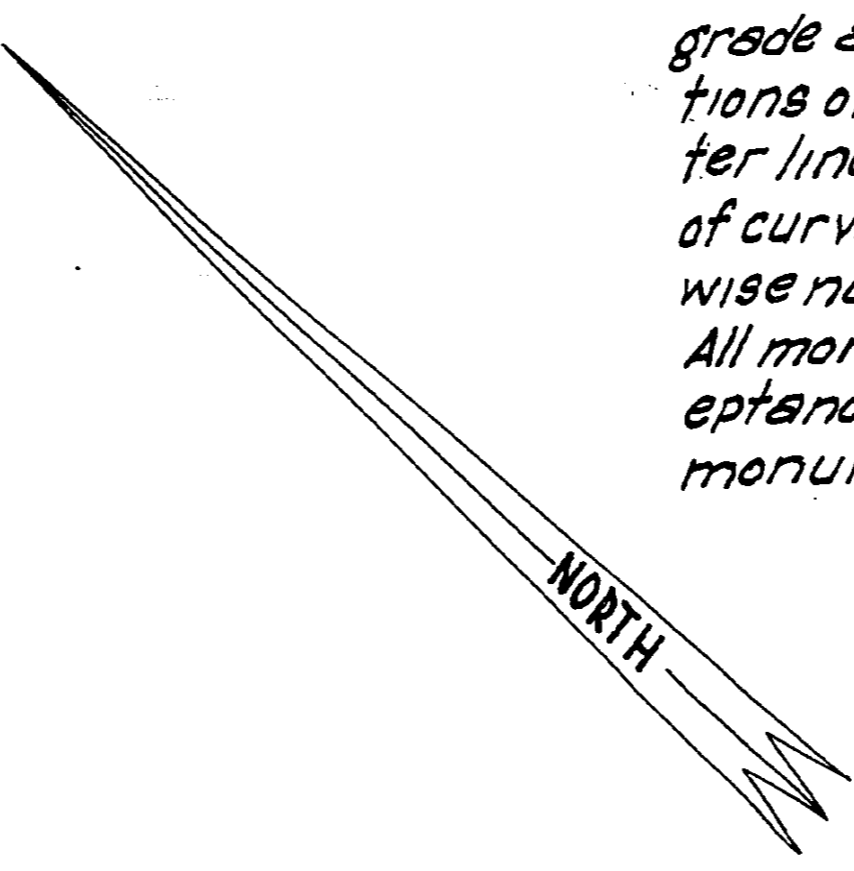
MONUMENT NOTES

—○— indicates: Set 2" Iron Pipe, bearing a Brass Disc stamped "R.C.E. 10770".

A 1" Iron Pipe, bearing a Brass Disc stamped "R.C.E. 10770" was Set at all Lot Corners within this TRACT.

Set 2" Iron Pipe, with Brass Disc stamped R.C.E. 10770, in the sub-grade and a Spike and Washer on the surface, at all intersections of centerlines of Streets, Alleys, and Ways, at all center line terminations, at all centerline beginnings and ends of curves, and all other points of control, unless otherwise noted.

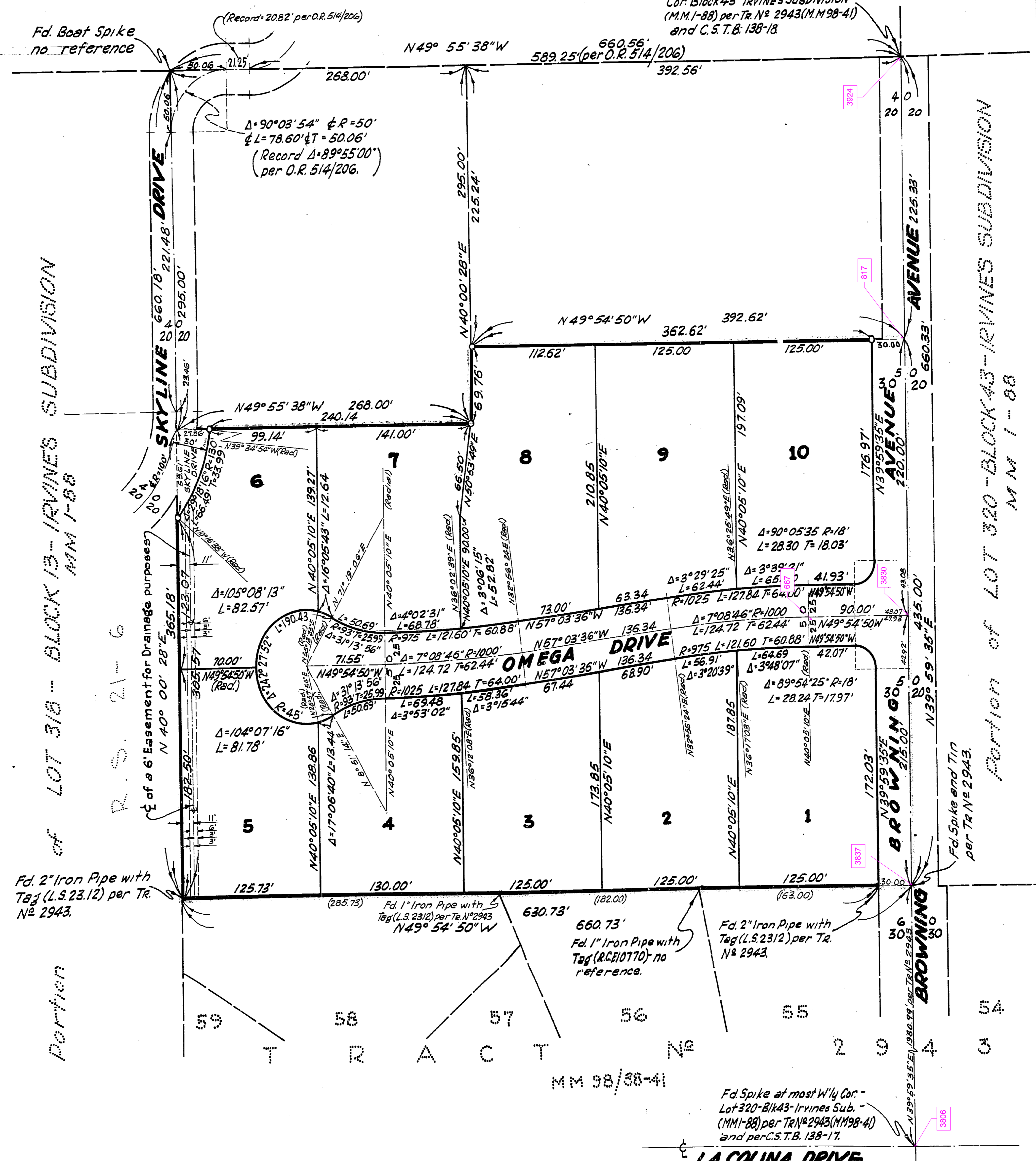
All monuments shall occupy positions indicated prior to acceptance of Street improvements. A copy of the ties to said monuments shall be furnished to the County Surveyor.



BLOCK 13 IRVINE'S SUBDIVISION

M.M. 1-88.

Fd. 6" X 8" monument - Most N'ly Cor. Block 43 - IRVINE'S SUBDIVISION (M.M. 1-88) per Tr. No 2943 (M.M. 98-41) and C.S.T.B. 138-18



Portion of LOT 318 - BLOCK 13 - IRVINE'S SUBDIVISION
M.M. 1-88

Portion of LOT 320 - BLOCK 43 - IRVINE'S SUBDIVISION
M.M. 1-88

Fd. 2" Iron Pipe with Tag (L.S. 2312) per Tr. No 2943.

Fd. 1" Iron Pipe with Tag (L.S. 2312) per Tr. No 2943 N49°54'50"W

Fd. 1" Iron Pipe with Tag (R.C.E. 10770) no reference.

Fd. 2" Iron Pipe with Tag (L.S. 2312) per Tr. No 2943.

Fd. Spike at most W'ly Cor. - Lot 320 - Blk 43 - Irvine's Sub. - (M.M. 1-88) per Tr. No 2943 (M.M. 98-41) and per C.S.T.B. 138-17.

LA COLINA DRIVE

M.M. 98/88-41