

CORNER RECORD

Agency Index _____

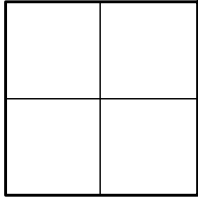
Document Number

CR 2022-1471

City of UNINCORPORATED TERRITORY

County of ORANGE, California

Brief Legal Description AT THE INTERSECTION OF BROWNING AVE AND RAINBOW DR SE'LY



CORNER TYPE

- ☐ Government Corner ☐ Control
☐ Meander ☐ Property
☐ Rancho ☒ Other

Date of Survey 3-15-2022

COORDINATES (Optional)

N. _____ E. _____
Elevation _____
Units Metric ☐ U.S. Survey Foot ☒
Horizontal Datum _____
Zone _____ Epoch Date _____
Vertical Datum _____

- ☐ Complies with Public Resources Code §§8801-8819
☐ Complies with Public Resources Code §§8890-8902

PLS Act Ref: ☐ 8765(d) ☒ 8771 ☐ 8773 ☐ Other:

Corner/
Monument: ☐ Left as found ☐ Established ☒ Rebuilt ☐ Pre-Construction
☐ Found and tagged ☐ Reestablished ☒ Referenced ☐ Post-Construction

Narrative of corner identified and monument as found, set, reset, replaced, or removed:

☒ See sheet #2 for description (s):

NO CLAIM IS MADE AS TO THE RELATIONSHIP OF THE POINTS SHOWN HEREON TO TRUE BOUNDARY LOCATIONS. RIGHT OF WAY, PARCEL, OR LOT LINES, OR ANY OTHER DATA RELATED TO DELINEATION OF PROPERTY RIGHTS ARE DISPLAYED FOR GRAPHICAL REPRESENTATION ONLY.

BEARINGS SHOWN HEREON ARE ASSUMED AND ARE DISPLAYED FOR ANGULAR RELATIONSHIP ONLY.

MEASURED DISTANCES SHOWN HEREON ARE GRID DISTANCES, DERIVED BY INVERSE FROM POSITIONS ESTABLISHED BY A FULLY REDUNDANT LEAST SQUARES NETWORK ADJUSTMENT. ALL POINTS WERE EITHER TRAVERSED THROUGH OR DOUBLE DETERMINED, PER CHAPTERS 5 & 11 OF THE OC SURVEY STANDARDS MANUAL. TO OBTAIN A GROUND DISTANCE, MULTIPLY A GRID DISTANCE BY 1.00002170.

RECORD DISTANCES SHOWN HEREON ARE AS THEY APPEAR ON THE DOCUMENT OF RECORD. DISTANCES MAY BE EITHER GRID OR GROUND, AS PER SAID RECORD. ALL DISTANCES WERE FIELD VERIFIED USING ELECTRONIC DISTANCE MEASUREMENTS.

SURVEYOR'S STATEMENT

This Corner Record was prepared by me or under my direction in conformance with
the Professional Land Surveyors' Act on 09/01/2022

Signed Elliott Medina (P.L.S.) or R.C.E. No. 9294

COUNTY SURVEYOR'S STATEMENT

This Corner Record was received SEPTEMBER 1, 2022

and examined and filed OCTOBER 3, 2022

Signed Kevin R. Hills (P.L.S.) or R.C.E. No. 6617

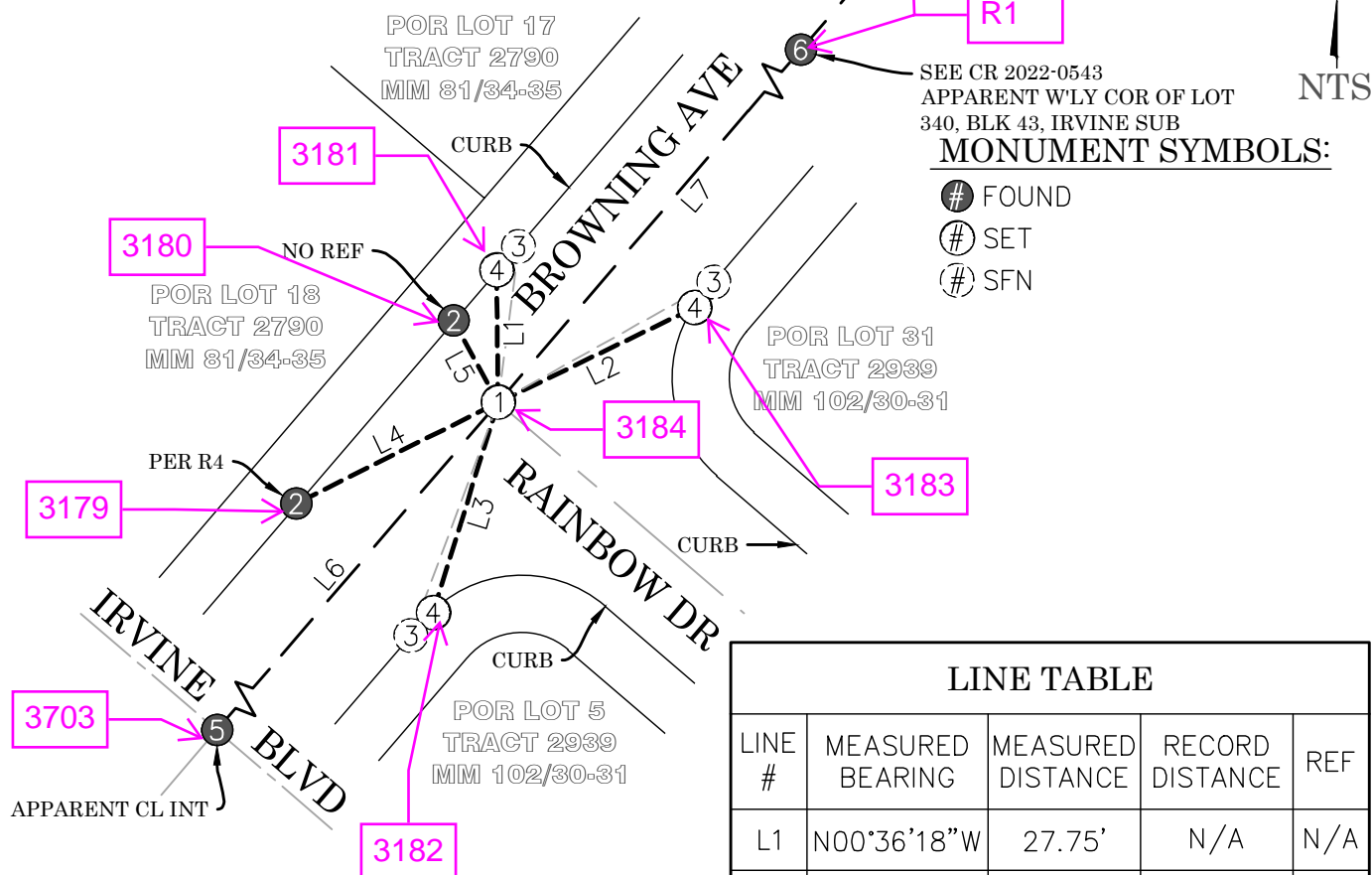
Title COUNTY SURVEYOR



County Surveyor's Comment _____

RECORD REFERENCES:

R1 CORNER RECORD 2022-0543
 R2 OCS A/NE-IRV/186-194 (PG 190)
 R3 OCS A/NE-IRV/1923-1927 (PG 1927)
 R4 OCS UNFILED FIELD NOTES DATED 2-29-2012

**LINE TABLE**

| LINE # | MEASURED BEARING | MEASURED DISTANCE | RECORD DISTANCE | REF |
|--------|------------------|-------------------|-----------------|-----|
| L1 | N00°36'18"W | 27.75' | N/A | N/A |
| L2 | N64°13'58"E | 45.76' | N/A | N/A |
| L3 | N17°11'11"E | 46.18' | N/A | N/A |
| L4 | N63°26'54"E | 47.50' | 47.50' | R4 |
| L5 | N28°42'02"W | 19.56' | N/A | N/A |
| L6 | N40°39'07"E | 1179.78' | 1179.76' | R3 |
| L7 | N40°39'14"E | 140.34' | 140.35' | R3 |
| L8 | N40°37'02"E | 24.96' | 24.96' | R1 |

LEGEND:

--- REF LINE 1: APPARENT CENTERLINE
 --- REF LINE 2: TIE LINES
 --- REF LINE 3: MEAS BETWEEN MONUMENTS

OCS ORANGE COUNTY SURVEYOR
 SFN SEARCHED, FOUND NOTHING

MONUMENT NOTES:

- ① FD PK NAIL & 1-1/4" BR WSHR STMPD "OCS", NO REF, DN 0.3' IN AC; REMOVED NAIL, FILLED HOLE WITH CONC, AND SET SPIKE & 1-1/2" SS WSHR STMPD "OCS", FLUSH IN AC
- ② FD LEAD & 3/4" BR TAG STMPD "OCS TIE" ON TOP OF CONC CURB, REF AS SHOWN
- ③ POSITION OF TIE POINT PER R4; SFN
- ④ SET LEAD & 3/4" BR TAG STMPD "OCS TIE" ON TOP OF CONC CURB
- ⑤ OCS GPS 6540: FD HEX BAR, PER R2, DN 1.6' IN MON WELL
- ⑥ FD SPIKE & 1-1/2" SS WSHR STMPD "OCS", PER R1, FLUSH IN AC