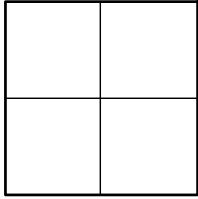


# CORNER RECORD

Agency Index \_\_\_\_\_

Document Number \_\_\_\_\_

CR 2022-0543

City of UNINCORPORATED TERRITORYCounty of ORANGE, CaliforniaBrief Legal Description ALONG BROWNING AVE: AT THE INT OF RAINBOW DR, AND AT THE W'LY COR  
OF LOT 340, BLK 43 OF THE IRVINE SUB. +/- 25' SW'LY OF SAID INT**CORNER TYPE**

- |  |   |
|--|---|
| <input type="checkbox"/> Government Corner | <input type="checkbox"/> Control          |
| <input type="checkbox"/> Meander           | <input type="checkbox"/> Property         |
| <input type="checkbox"/> Rancho            | <input checked="" type="checkbox"/> Other |

Date of Survey 01/19/2022**COORDINATES (Optional)**

N. \_\_\_\_\_ E. \_\_\_\_\_

Elevation \_\_\_\_\_

Units Metric ☐ U.S. Survey Foot ☒

Horizontal Datum \_\_\_\_\_

Zone \_\_\_\_\_ Epoch Date \_\_\_\_\_

Vertical Datum \_\_\_\_\_

☐ Complies with Public Resources Code §§8801-8819☐ Complies with Public Resources Code §§8890-8902PLS Act Ref: ☐ 8765(d)☒ 8771☐ 8773☐ Other: \_\_\_\_\_Corner/ ☐ Left as found☐ Established☐ Rebuilt☐ Pre-ConstructionMonument: ☐ Found and tagged☒ Reestablished☐ Referenced☒ Post-Construction

Narrative of corner identified and monument as found, set, reset, replaced, or removed:

☒ See sheet #2 for description (s):

THE PURPOSE OF THIS RECORD IS TO DOCUMENT THE PERPETUATION OF FOUND MONUMENT(S) PURSUANT TO THE PLS ACT SECTION 8771. NO CLAIM IS MADE AS TO THE RELATIONSHIP OF THE POINTS SHOWN HEREON TO TRUE BOUNDARY LOCATIONS. RIGHT OF WAY, PARCEL, OR LOT LINES, OR ANY OTHER DATA RELATED TO DELINEATION OF PROPERTY RIGHTS ARE DISPLAYED FOR GRAPHICAL REPRESENTATION ONLY.

BEARINGS SHOWN HEREON ARE ASSUMED AND ARE DISPLAYED FOR ANGULAR RELATIONSHIP ONLY.

MEASURED DISTANCES SHOWN HEREON ARE GRID DISTANCES. TO OBTAIN A GROUND DISTANCE, MULTIPLY A GRID DISTANCE BY 1.00002175.

RECORD DISTANCES SHOWN HEREON ARE AS THEY APPEAR ON THE DOCUMENT OF RECORD. DISTANCES MAY BE EITHER GRID OR GROUND, AS PER SAID RECORD.

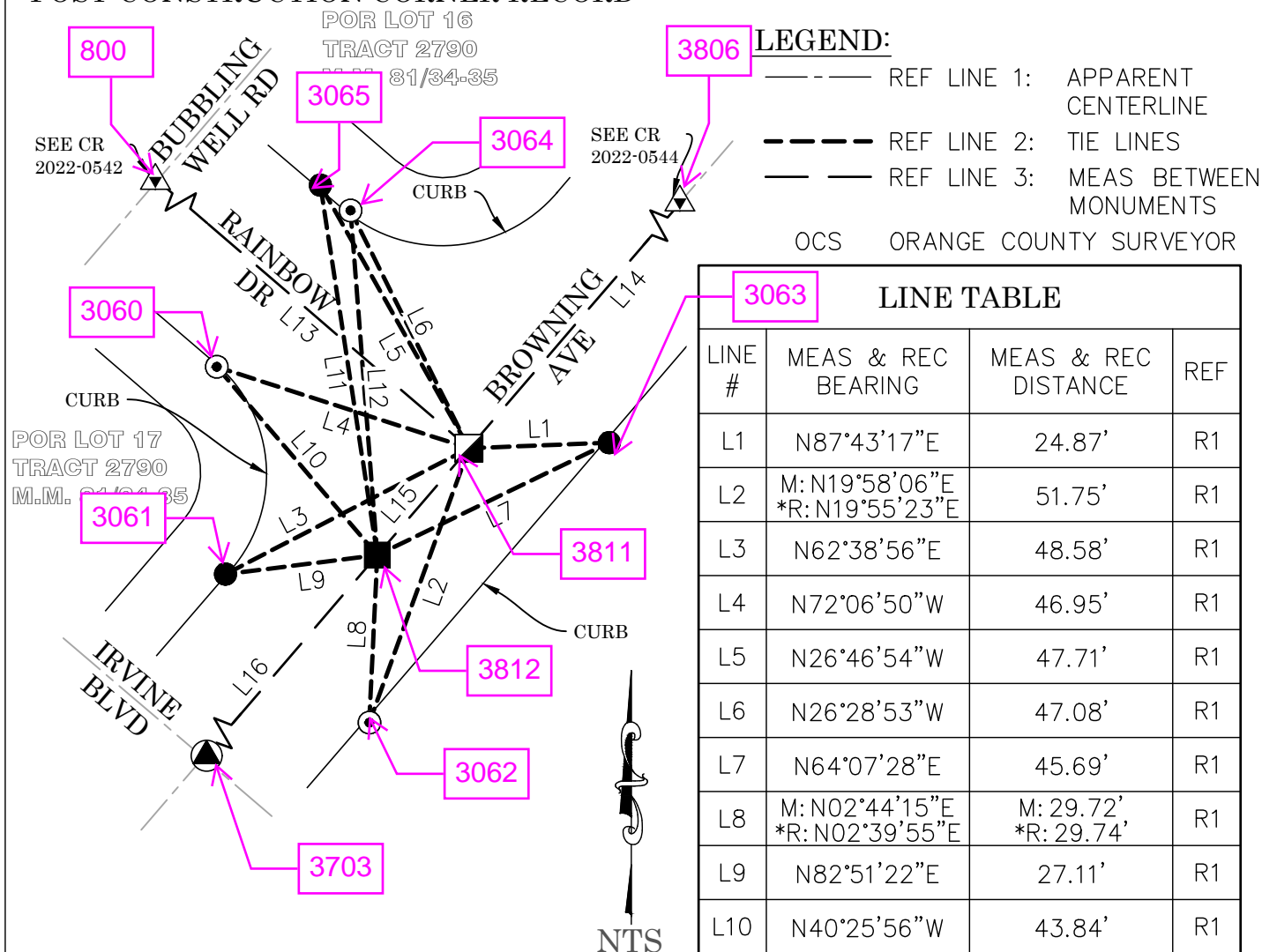
**SURVEYOR'S STATEMENT**

This Corner Record was prepared by me or under my direction in conformance with

the Professional Land Surveyors' Act on 5-17-2022Signed Roy Macias (P.L.S.) or R.C.E. No. 9501**COUNTY SURVEYOR'S STATEMENT**This Corner Record was received May 17, 2022and examined and filed May 23, 2022Signed Kevin R. Hills (P.L.S.) or R.C.E. No. 6617Title COUNTY SURVEYOR

County Surveyor's Comment \_\_\_\_\_

## POST-CONSTRUCTION CORNER RECORD

**RECORD REFERENCES:**

- R1 CORNER RECORD 2021-1801  
 R2 OCS A/NE-IRV/186-194 (PG 190)  
 R3 OCS A/NE-IRV/1923-1927 (PG 1927)  
 R4 RECORD OF SURVEY 2012-1053 (NOT FILED) IN REVIEW

**MONUMENT NOTES:**

- FD SMALL PK NAIL & 1-3/8" BR WSHR STMPD "OCS", PER R1, DN 0.25' IN AC; REPLACED WITH SPIKE & 1-1/2" SS WSHR STMPD "OCS", FLUSH IN AC
- ▣ FD GEAR SPIKE & 1-1/2" BR WSHR STMPD "INCLEDON CONSULTING LS 7714", PER R4, DN 0.3' IN AC; REPLACED WITH SPIKE & 1-1/2" SS WSHR STMPD "OCS", FLUSH IN AC
- ▲ FD MON WELL WITH PUN HEX BAR, PER R2, DN 1.6'; ALSO OCS GPS 6540
- FD LEAD & 3/4" BR TAG STMPD "OCS TIE" ON TOP OF CONC CURB, PER R1
- ⊙ FD CHISELED "+" ON TOP OF CONC CURB, PER R3; REPLACED WITH LEAD & 3/4" BR TAG STMPD "OCS TIE"
- ▲ FD MON AS DESCRIBED ON ADJACENT CORNER RECORD

\*POSITION OF TIE PER R1 FOUND TO BE IN ERROR