

CORNER RECORD

Agency Index _____

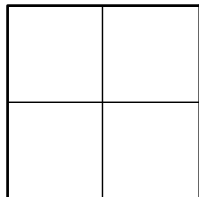
Document Number _____

CR 2023-0496

City of UNINCORPORATED TERRITORYCounty of ORANGE, CaliforniaBrief Legal Description AT THE APP INT OF BEVERLY GLENN DR & SKYLINE DR (SE'LY OF TWO INTS); ALSO MAY BE THE APP INT OF SKYLINE DR SEMI-TANGENT & NE'LY LINE OF BLK 13 OF THE IRVINE SUBDIVISION

CORNER TYPE

COORDINATES (Optional)



- ☐ Government Corner ☐ Control
☐ Meander ☐ Property
☐ Rancho ☒ Other

N. _____ E. _____

Elevation _____

Units Metric ☐ U.S. Survey Foot ☒

Horizontal Datum _____

Zone _____ Epoch Date _____

Vertical Datum _____

Date of Survey 11-14-2022

- ☐ Complies with Public Resources Code §§8801-8819
☐ Complies with Public Resources Code §§8890-8902

PLS Act Ref: ☐ 8765(d)☒ 8771☐ 8773☐ Other: _____Corner/ ☒ Left as found☐ Established☐ Rebuilt☐ Pre-ConstructionMonument: ☐ Found and tagged☐ Reestablished☐ Referenced☒ Post-Construction

Narrative of corner identified and monument as found, set, reset, replaced, or removed:

☒ See sheet #2 for description (s):

NO CLAIM IS MADE AS TO THE RELATIONSHIP OF THE POINTS SHOWN HEREON TO TRUE BOUNDARY LOCATIONS. RIGHT OF WAY, PARCEL, OR LOT LINES, OR ANY OTHER DATA RELATED TO DELINEATION OF PROPERTY RIGHTS ARE DISPLAYED FOR GRAPHICAL REPRESENTATION ONLY.

BEARINGS SHOWN HEREON ARE ASSUMED AND ARE DISPLAYED FOR ANGULAR RELATIONSHIP ONLY.

MEASURED DISTANCES SHOWN HEREON ARE GRID DISTANCES, DERIVED BY INVERSE FROM POSITIONS ESTABLISHED BY A FULLY REDUNDANT LEAST SQUARES NETWORK ADJUSTMENT. ALL POINTS WERE EITHER TRAVERSED THROUGH OR DOUBLE DETERMINED, PER CHAPTERS 5 & 11 OF THE OC SURVEY STANDARDS MANUAL. TO OBTAIN A GROUND DISTANCE, MULTIPLY A GRID DISTANCE BY 1.00002484.

RECORD DISTANCES SHOWN HEREON ARE AS THEY APPEAR ON THE DOCUMENT OF RECORD. DISTANCES MAY BE EITHER GRID OR GROUND, AS PER SAID RECORD. ALL DISTANCES WERE FIELD VERIFIED USING ELECTRONIC DISTANCE MEASUREMENTS.

SURVEYOR'S STATEMENT

This Corner Record was prepared by me or under my direction in conformance with

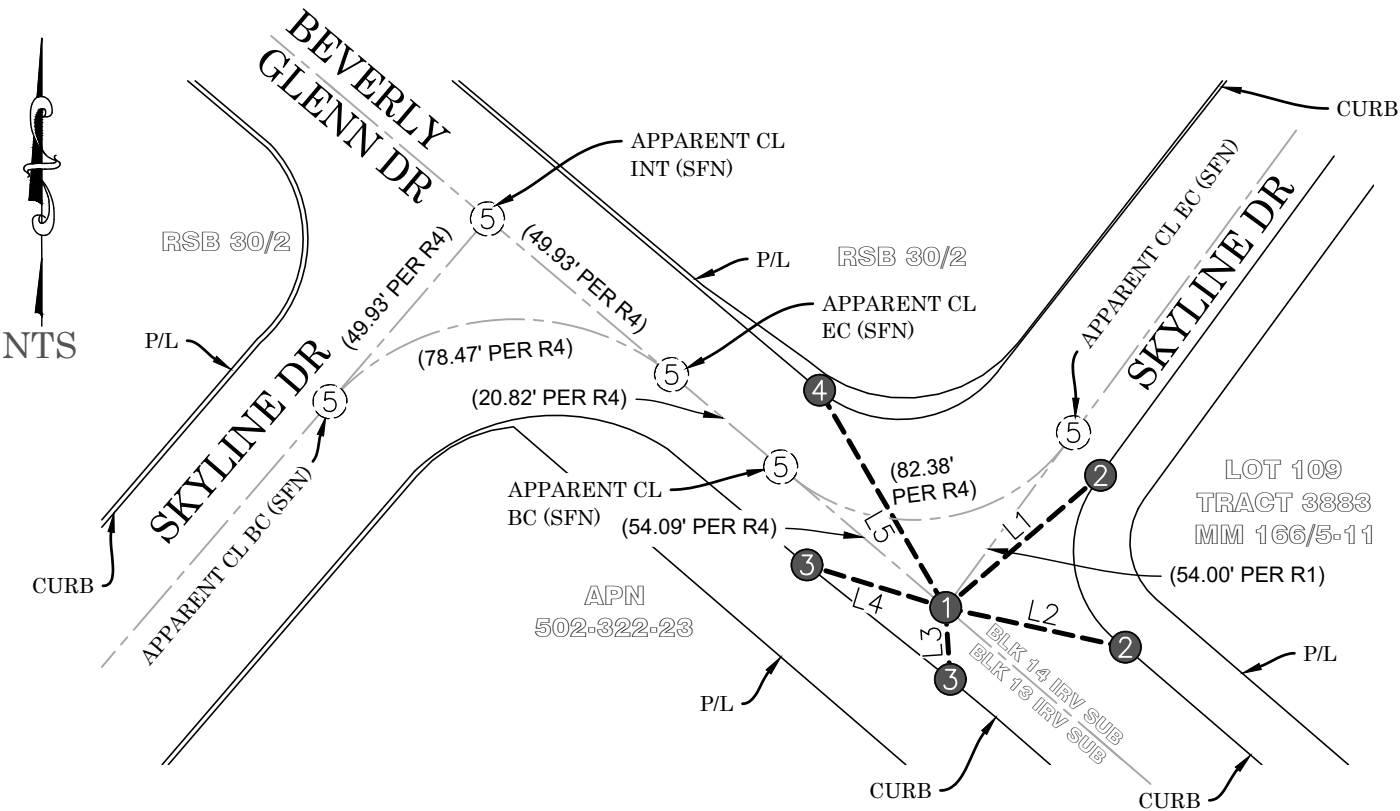
the Professional Land Surveyors' Act on 02-15-2023Signed Elliott Medina (P.L.S.) or R.C.E. No. 9294

COUNTY SURVEYOR'S STATEMENT

This Corner Record was received 02-15-2023and examined and filed 01-03-2024Signed Michael LaFontaine (P.L.S.) or R.C.E. No. 8970Title DEPUTY COUNTY SURVEYOR

County Surveyor's Comment _____

POST-CONSTRUCTION CORNER RECORD



RECORD REFERENCES:

- R1 CORNER RECORD 2021-1477
- R2 CORNER RECORD 2015-0947
- R3 OCS A/NE-IRV/1828-1886 (PG 1845)
- R4 RSB 30/2

MONUMENT SYMBOLS:

- # FOUND
- # SFN

LEGEND:

- REF LINE 1: APPARENT CENTERLINE
- REF LINE 2: TIE LINES
- REF LINE 3: MEAS BETWEEN MONUMENTS
- OCS ORANGE COUNTY SURVEYOR
- SFN SEARCHED, FOUND NOTHING
- GRAY LINE NON-MEASURED LINE
- P/L PROPERTY LINE

MONUMENT NOTES:

- ① FD SPIKE & 1-1/2" BR WSHR STMPD "OCS", PER R1, FLUSH IN AC
- ② FD LEAD & 3/4" BR TAG STMPD "OCS TIE" ON TOP OF CONC CURB, PER R3
- ③ FD LEAD & 3/4" BR TAG STMPD "OCS TIE" ON TOP OF CONC CURB, PER R2
- ④ FD LEAD & 3/4" BR TAG STMPD "OCS TIE" ON TOP OF CONC CURB, PER R1
- ⑤ APPARENT CL BC, EC, OR INT; SEARCHED, FD NOTHING

LINE TABLE				
LINE #	MEASURED BEARING	MEASURED DISTANCE	RECORD DISTANCE	REF
L1	N49°33'48"E	42.44'	42.43'	R1
L2	N77°32'40"W	38.37'	38.37'	R1
L3	N03°42'57"W	15.01'	15.02'	R1
L4	N72°55'15"W	30.23'	30.23'	R1
L5	N30°06'50"W	52.35'	52.34'	R1