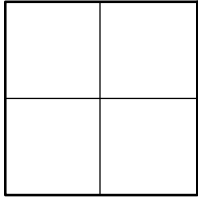


CORNER RECORD

Agency Index _____

Document Number 2021-1474City of UNINCORPORATED TERRITORYCounty of ORANGE, CaliforniaBrief Legal Description ALONG OMEGA DR: AT THE APPARENT EC & BC +/- 74' SE'LY & 90' NW'LY OF BROWNING AVE**CORNER TYPE**

- ☐ Government Corner ☐ Control
☐ Meander ☐ Property
☐ Rancho ☒ Other

Date of Survey NOVEMBER 3, 2020**COORDINATES (Optional)**

N. _____ E. _____

Elevation _____

Units Metric ☐ U.S. Survey Foot ☒

Horizontal Datum _____

Zone _____ Epoch Date _____

Vertical Datum _____

☐ Complies with Public Resources Code §§8801-8819☐ Complies with Public Resources Code §§8890-8902PLS Act Ref: ☐ 8765(d) ☒ 8771 ☐ 8773 ☐ Other: _____

Corner/
Monument: ☒ Left as found ☐ Established ☐ Rebuilt ☐ Pre-Construction
☐ Found and tagged ☐ Reestablished ☒ Referenced ☒ Post-Construction

Narrative of corner identified and monument as found, set, reset, replaced, or removed:

☒ See sheet #2 for description (s):

THE PURPOSE OF THIS RECORD IS TO DOCUMENT THE PERPETUATION OF FOUND MONUMENT(S) PURSUANT TO THE PLS ACT SECTION 8771. NO CLAIM IS MADE AS TO THE RELATIONSHIP OF THE POINTS SHOWN HEREON TO TRUE BOUNDARY LOCATIONS. RIGHT OF WAY, PARCEL, OR LOT LINES, OR ANY OTHER DATA RELATED TO DELINEATION OF PROPERTY RIGHTS ARE DISPLAYED FOR GRAPHICAL REPRESENTATION ONLY.

BEARINGS SHOWN HEREON ARE ASSUMED AND ARE DISPLAYED FOR ANGULAR RELATIONSHIP ONLY.

MEASURED DISTANCES SHOWN HEREON ARE GRID DISTANCES. TO OBTAIN A GROUND DISTANCE, MULTIPLY A GRID DISTANCE BY 1.00002352..

RECORD DISTANCES SHOWN HEREON ARE AS THEY APPEAR ON THE DOCUMENT OF RECORD. DISTANCES MAY BE EITHER GRID OR GROUND, AS PER SAID RECORD.

SURVEYOR'S STATEMENT

This Corner Record was prepared by me or under my direction in conformance with

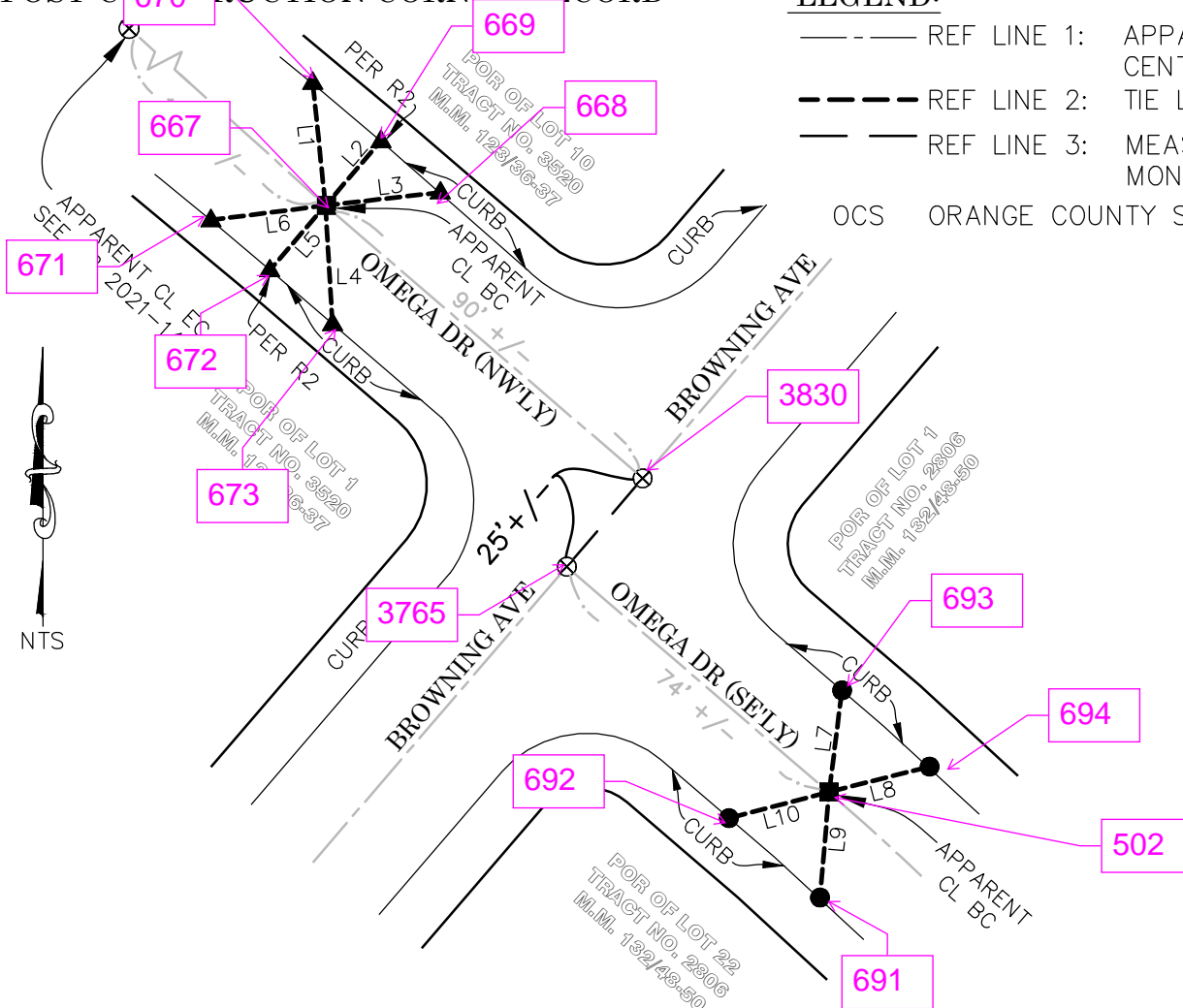
the Professional Land Surveyors' Act on JULY 26, 2021Signed Jesom Moreno (P.L.S.) or R.C.E. No. 8478**COUNTY SURVEYOR'S STATEMENT**This Corner Record was received JULY 26, 2021and examined and filed JULY 26, 2021Signed Kevin R. Hills (P.L.S.) or R.C.E. No. 6617Title COUNTY SURVEYOR

County Surveyor's Comment THE MONUMENTS FOUND AND REFERENCED ON PAGE 2 OF THIS DOCUMENT WERE SET AFTER COMPLETION OF CONSTRUCTION ACTIVITIES IN 2017 PER TIES SHOWN ON PRE-CONSTRUCTION CORNER RECORD 2015-0949, HOWEVER NO POST-CONSTRUCTION CORNER RECORD WAS FILED AT THAT TIME.

POST-CORRECTION CORNER RECORD

LEGEND:

- REF LINE 1: APPARENT CENTERLINE
 --- REF LINE 2: TIE LINES
 --- REF LINE 3: MEAS BETWEEN MONUMENTS
 OCS ORANGE COUNTY SURVEYOR



LINE TABLE

LINE #	MEASURED BEARING	MEAS DIST	RECORD DIST	REF
L1	N05°52'14"W	26.53'	26.54'	R1
L2	N40°42'16"E	18.30'	18.31'	R2
L3	N83°28'53"E	24.88'	24.89'	R1
L4	N03°26'50"W	25.49'	25.51'	R1
L5	N40°43'15"E	18.34'	18.33'	R2
L6	N82°45'23"E	24.78'	24.79'	R1
L7	N07°10'26"E	21.99'	21.99'	R1
L8	N75°54'07"E	22.23'	22.20'	R1
L9	N05°02'10"E	22.83'	22.82'	R1
L10	N75°15'55"E	22.28'	22.28'	R1

RECORD REFERENCES:

- R1 CORNER RECORD 2015-0949
 R2 OCS ALIGNMENT NOTES, A/NE-IRV/1828-1886 (PG 1851)
 R3 OCS ALIGNMENT NOTES, A/NE-IRV/1983-1989 (PG 1988)

MONUMENT NOTES:

- FD SPIKE & 1-1/2" BR WSHR STMPD "OCS", NO REF, FLUSH IN AC, (SEE NOTE ON PAGE 1)
- ▲ FD LEAD, & 3/4" BR TAG STMPD "OCS TIE", ON TOP OF CONC CURB, PER R1&R3 UNLESS OTHERWISE NOTED
- FD LEAD, & 3/4" BR TAG STMPD "OCS TIE", ON TOP OF CONC CURB, PER R1
- ⊗ SEARCHED FOUND NOTHING