

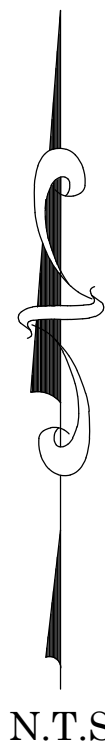
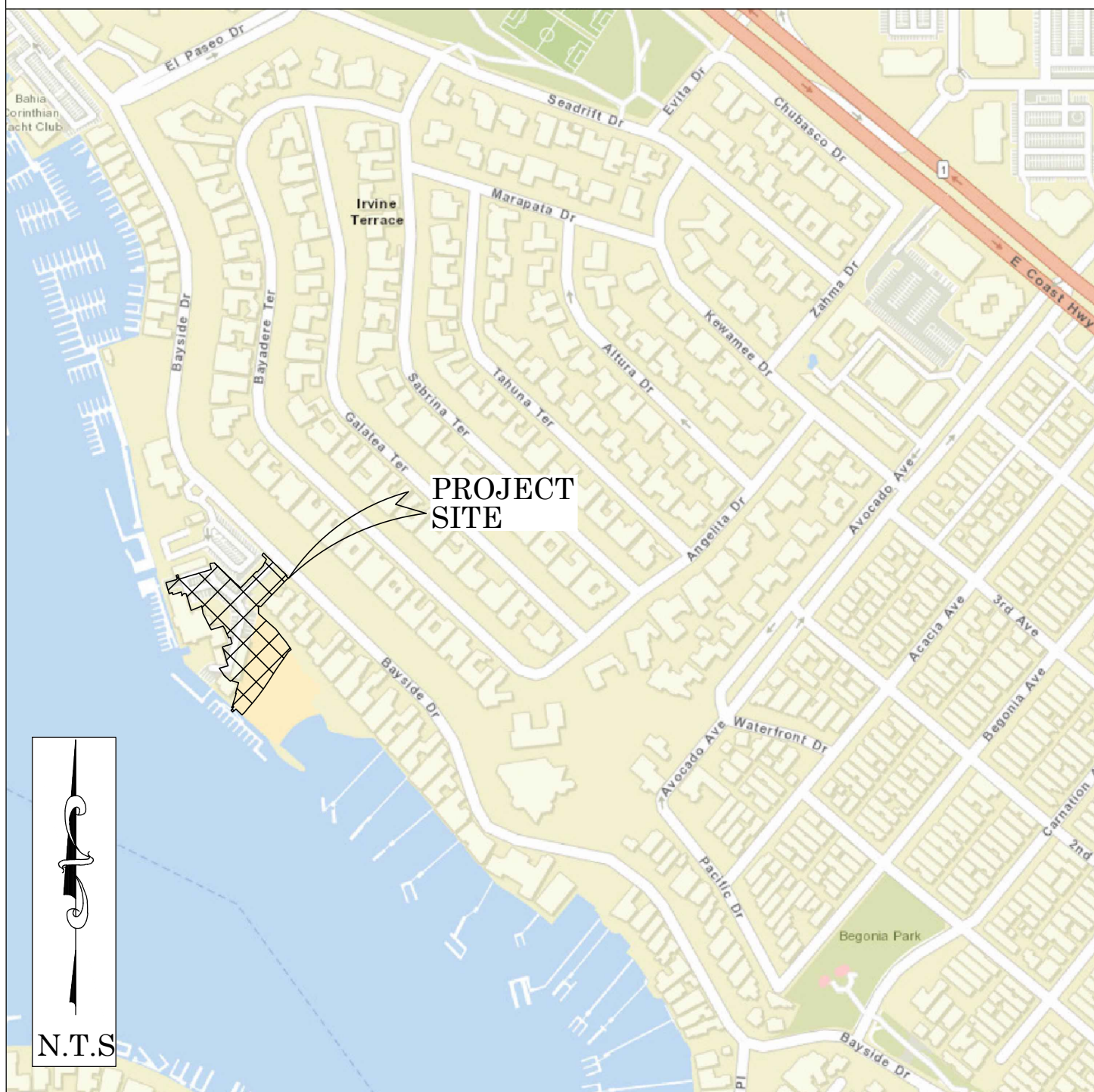


OC PUBLIC WORKS DEPARTMENT
JAMES TREADAWAY, DIRECTOR OF PUBLIC WORKS
KEVIN HILLS, COUNTY SURVEYOR
NEWPORT HARBOR



PARKING LOT UPGRADES

LOCATION MAP



FOUND CGPS "FVPK"
N: 2188769.57
E: 6048756.25
THIS IS A CONTINUOUS GPS STATION
(CGPS) AND IS PART OF THE CALIFORNIA
SPATIAL REFERENCE NETWORK (CSRN),
FROM WHICH DATA CAN BE DOWNLOADED
HERE: [HTTP://SOPACCSRC.UCSD.EDU/](http://SOPACCSRC.UCSD.EDU/).



BASIS OF BEARINGS

THE BASIS OF BEARINGS FOR THIS SURVEY IS BASED ON THE CALIFORNIA COORDINATE SYSTEM (CCS83), ZONE VI, NAD 83, OCS (2017.50) EPOCH ADJUSTMENT, AS DETERMINED LOCALLY BY A LINE BETWEEN CONTINUOUS GLOBAL POSITIONING STATIONS CGPS STATIONS (TRAK) AND (FVPK) BEING NORTH 67°14'53" WEST AS DERIVED FROM THE COORDINATES PUBLISHED BY THE CALIFORNIA SPATIAL REFERENCE CENTER (CSRC) ALONG WITH DATA SHEETS ON FILE IN THE OFFICE OF THE ORANGE COUNTY SURVEYOR.

HORIZONTAL DATUM

COORDINATES SHOWN ARE BASED ON THE CALIFORNIA COORDINATE SYSTEM (CCS83), ZONE VI, NAD 83, OCS (2017.50) EPOCH ADJUSTMENT.
ALL DISTANCES SHOWN ARE GRID, UNLESS OTHERWISE NOTED. TO OBTAIN GROUND DISTANCES MULTIPLY GRID BY A COMBINED FACTOR OF 1.00002988.
THIS COMBINATION FACTOR WAS HELD AT: CP#2747
N: 2166856.99 E: 6064180.44 EL: 10.57
ALL DISTANCES ARE BASED ON THE U.S. SURVEY FOOT.

VERTICAL DATUM

BM. TIDAL-3NP ELEV. = 10.673' YEAR LEVELED: 2011
NAVD 1988 (O.C.S. 1995 ADJUSTMENT)
DESCRIPTION: FOUND 3 3/4" BRASS U.S. COAST & GEODETIC SURVEY DISK STAMPED "3 NP 1955" FLUSH IN CONCRETE. MONUMENT IS LOCATED AT THE ORANGE COUNTY HARBOR DISTRICT OFFICE, IN THE TOP OF THE SEAWALL, 68.9 METERS (226 FT.) NORTHWEST OF THE MARK STAMPED 2 NP 1955, 21.3 METERS (69.9 FT.) NORTHWEST OF THE WEST CORNER OF THE SHERIFF HARBOR PATROL OFFICE BUILDING, 13.7 METERS (44.9 FT.) SOUTHWEST OF THE SOUTHWEST WALL OF A SHOP BUILDING, 1.1 METERS (3.6 FT.) SOUTHEAST OF A CHAIN LINK FENCE. THE STATION IS LEVEL WITH THE HEIGHT OF THE GROUND.

NOTES

THE SURVEY INFORMATION SHOWN HEREON IS TO BE USED FOR TOPOGRAPHIC RELATIONSHIPS ONLY AND IS NOT INTENDED FOR LAND ACQUISITION OR BOUNDARY PURPOSES.

SHEET INDEX

SHEET	NO.	DESCRIPTION
1	1	TITLE SHEET
2-4	2-4	BOUNDARY MAP
5	5	TOPOGRAPHIC MAP

PURPOSE OF SURVEY

THE PURPOSE OF THE SURVEY IS TO PROVIDE A TOPOGRAPHIC MAP AND RIGHT OF WAY ESTABLISHMENT FOR THIS PORTION OF THE NEWPORT HARBOR PARKING LOT.

SENIOR LAND SURVEYOR'S CERTIFICATE:

THIS MAP CORRECTLY REPRESENTS A SURVEY MADE BY ME OR UNDER MY DIRECTION IN CONFORMANCE WITH REQUIREMENTS OF THE PROFESSIONAL LAND SURVEYOR'S ACT; THIS 13 DAY OF SEPTEMBER, 2022.

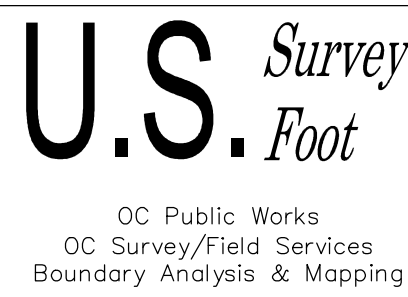
MICHAEL KUBISTY, PLS. SENIOR LAND SURVEYOR



SENIOR LAND SURVEYOR:

THIS MAP CORRECTLY REPRESENTS A SURVEY MADE BY ME OR UNDER MY DIRECTION IN CONFORMANCE WITH REQUIREMENTS OF THE PROFESSIONAL LAND SURVEYOR'S ACT; THIS 13 DAY OF SEPTEMBER, 2022.

JESOM MORENO, PLS. SENIOR LAND SURVEYOR



TOPOGRAPHIC MAPPING PROJECT

1	09/22	ADDITIONAL TOPO	COUNTY OF ORANGE OC PUBLIC WORKS OC SURVEY/FIELD SERVICES/BOUNDARY ANALYSIS & MAPPING				
			NEWPORT HARBOR PARKING LOT UPGRADES				
			TITLE SHEET				
			PROJECT LIMITS: APN 050-252-05, APN 050-252-03, APN 052-222-01				
			DATE OF SURVEY: 06/08/2022		BY: J. RUSSO & CREW		SHEET NO. 1 of 5
			MAPPING		BY: JLSLAS		
			OFFICE CHECK		BY: M. KUBISTY, PLS		
			FIELD CHECK		BY: J. RUSSO		
			SCALE: N.T.S.		W.O. #EC41896		
			FILE: NEWPORT HARBOR_TOPO_2022.DWG		FILE # 2122PW-CM0007		
MARK	DATE	ITEM					
REVISIONS							

MONUMENT NOTES

- 1
- FOUND 2 INCH BRASS CAP STAMPED "PI CNB" PER R45, FLUSH IN AC, ACCEPTED AS THE CENTERLINE P.I. OF BAYSIDE DRIVE.
- 2
- FOUND GEAR SPIKE AND WASHER STAMPED "LS 8294" PER R40, FLUSH IN AC, ACCEPTED AS POINT ON CENTERLINE OF BAYSIDE DRIVE.
- 3
- FOUND GEAR SPIKE AND WASHER STAMPED "LS 8294" PER R41, FLUSH IN AC, ACCEPTED AS POINT ON CENTERLINE OF BAYSIDE DRIVE.
- 4
- FOUND GEAR SPIKE AND WASHER STAMPED "LS 6921" PER R20, FLUSH IN AC, ACCEPTED AS CENTERLINE E.C. OF BAYSIDE DRIVE.
- 5
- FOUND LEAD, TACK AND TAG STAMPED "TIE LS 6921" PER R20, FLUSH IN CONCRETE, ACCEPTED AS A TIE FOR POINT ON CENTERLINE OF BAYSIDE DRIVE.
- 6
- FOUND LEAD, TACK AND TAG STAMPED "TIE LS 6921" PER R20, FLUSH IN CONCRETE, ACCEPTED AS TIE FOR N'LY RIGHT OF WAY OF BAYSIDE DRIVE.
- 7
- FOUND LEAD, TACK AND TAG STAMPED "LS 8294" PER R41, FLUSH IN CONCRETE, ACCEPTED AS A TIE FOR THE CENTERLINE OF BAYSIDE DRIVE AND ALSO THE NE'LY PROD OF THE N'LY LINE OF LOT 1 OF R1 PER R42.
- 8
- FOUND LEAD, TACK AND TAG STAMPED "LS 8294" PER R41, FLUSH IN CONCRETE, ACCEPTED AS A TIE FOR THE CENTERLINE OF BAYSIDE DRIVE AND ALSO THE SW'LY PROD OF THE N'LY LINE OF LOT 172 OF R2 PER R43.
- 9
- FOUND CHISELED X PER R30, FLUSH IN CONCRETE, ACCEPTED AS A TIE FOR THE BULKHEAD LINE.
- 10
- FOUND BRASS DISK STAMPED "3NP" PER R30, FLUSH IN CONCRETE, ACCEPTED AS A TIE FOR THE BULKHEAD LINE.
- 11
- FOUND BRASS DISK STAMPED "US 104B RESET 5/88" PER R31, FLUSH IN CONCRETE, FITS TIES FOR A CHISELED X PER R30, ACCEPTED AS A TIE FOR THE BULKHEAD LINE.
- 12
- FOUND BRASS DISK STAMPED "COORS 1974" PER R30, FLUSH IN CONCRETE, ACCEPTED AS A TIE FOR THE BULKHEAD LINE.
- 13
- FOUND LEAD IN LIEU OF LEAD, TACK AND TAG STAMPED "RCE 12443" PER R21, FLUSH IN CONCRETE.
- 14
- FOUND LEAD IN LIEU OF LEAD, TACK AND TAG STAMPED "RCE 12489" PER R21, FLUSH IN CONCRETE.
- 15
- FOUND 1 INCH IRON PIPE AND TAG STAMPED "LS 3246" PER R21, FLUSH IN CONCRETE, 0.04 FEET N81°04'31"W FROM THE W'LY RIGHT OF WAY OF BAYSIDE DRIVE.
- 16
- FOUND LEAD TACK AND TAG STAMPED "RCE 12489" PER R44, FLUSH IN CONCRETE, ACCEPTED AS A TIE FOR THE CENTERLINE OF BAYSIDE DRIVE.

ESTABLISHMENT NOTES

- A
- SEARCHED, FOUND NOTHING, ESTABLISHED POINT ON CENTERLINE OF BAYSIDE DRIVE BY TIES PER R20.
- B
- SEARCHED, FOUND NOTHING ALONG A PORTION CENTERLINE OF BAYSIDE DRIVE, ESTABLISHED THE CENTERLINE OF BAYSIDE DRIVE BY LEAST SQUARE ADJUSTMENT BY HOLDING MONUMENTS 1, 2, 3, 4 AND ESTABLISHMENT A PER R2.
- C
- ESTABLISHED THE SW'LY RIGHT OF WAY OF BAYSIDE DRIVE BY HOLDING A LINE PARALLEL, AND A RECORD DISTANCE OF 25.00 FEET PER R1 SW'LY OF LINE ESTABLISHMENT B.
- D
- ESTABLISHED THE NE'LY RIGHT OF WAY OF BAYSIDE DRIVE BY HOLDING A LINE PARALLEL, AND A RECORD DISTANCE OF 45.00 FEET PER R2 NE'LY OF ESTABLISHMENT B.
- E
- ESTABLISHED THE NE'LY RIGHT OF WAY OF BAYSIDE DRIVE BY HOLDING A LINE PARALLEL, AND A RECORD DISTANCE OF 25.00 FEET PER R1 NE'LY OF ESTABLISHMENT B.
- F
- ESTABLISHED THE NW'LY LINE OF LOT 1 OF R1 BY HOLDING A LINE PERPENDICULAR TO ESTABLISHMENT B SW'LY OF MONUMENT 7.
- G
- ESTABLISHED THE N'LY CORNER OF LOT 1 OF R1 BY INTERSECTION OF ESTABLISHMENTS C AND F.
- H
- ESTABLISHED THE W'LY CORNER OF LOT 1 OF R1 BY HOLDING A RECORD DISTANCE OF 107.90 FEET SW'LY OF ESTABLISHMENT NOTE C ALONG ESTABLISHMENT F.
- I
- ESTABLISHED POINT ON CENTERLINE OF BAYSIDE DRIVE BY HOLDING RECORD CURVE DATA PER R1 NW'LY OF MONUMENT 4 ALONG ESTABLISHMENT B.
- J
- ESTABLISHED THE SE'LY LINE OF LOT 16 OF R1 BY HOLDING A LINE RADIAL TO ESTABLISHMENT B SW'LY AT ESTABLISHMENT I.
- K
- ESTABLISHED THE E'LY CORNER OF LOT 16 OF R1 BY INTERSECTION OF ESTABLISHMENTS C AND J.
- L
- ESTABLISHED THE S'LY CORNER OF LOT 16 OF R1 BY HOLDING A RECORD DISTANCE OF 92.33 FEET SW'LY OF ESTABLISHMENT K ALONG ESTABLISHMENT J.
- M
- ESTABLISHED A PORTION OF THE BULKHEAD LINE, OLD BULKHEAD LINE, AND THE SW'LY LINE OF PARCEL 1 OF R10 BY HOLDING A LINE BETWEEN ESTABLISHMENTS L AND B AND ITS NW'LY PROLONGATION.
- N
- ESTABLISHED THE SE'LY LINE OF PARCEL 1 OF R10 BY HOLDING A LINE PARALLEL, AND A RECORD DISTANCE OF 80.00 FEET PER R1 NW'LY OF ESTABLISHMENT F.
- O
- ESTABLISHED A TIE FOR THE BULKHEAD LINE BY DISTANCE--DISTANCE--INTERSECTION HOLDING A RECORD DISTANCE OF 172.54 FEET PER R30 SE'LY OF MONUMENT 11 AND A LINE WITH A RECORD DISTANCE OF 0.19 FEET PER R30 SW'LY OF MONUMENT 12.
- P
- ESTABLISHED THE BULKHEAD LINE AND ITS N'LY PROLONGATION BY HOLDING A LINE PARALLEL AND RECORD DISTANCE 2.00 FEET SW'LY FROM A LINE BETWEEN MONUMENTS 9 AND 11 PER R30.
- Q
- ESTABLISHED THE BULKHEAD LINE AND ITS S'LY PROLONGATION BY HOLDING A LINE PARALLEL AND RECORD DISTANCE 1.72 FEET SW'LY FROM A LINE BETWEEN MONUMENT 11 AND ESTABLISHMENT C PER R30.
- R
- ESTABLISHED THE ANGLE POINT IN THE BULKHEAD LINE AND U.S. 104B PER R1 BY INTERSECTION OF ESTABLISHMENTS P AND Q.
- S
- ESTABLISHED U.S. 104D PER R1 BY PROPORTION BETWEEN ESTABLISHMENTS H AND Q ALONG ESTABLISHMENT M PER R1.
- T
- ESTABLISHED THE BULKHEAD LINE BY HOLDING A LINE PERPENDICULAR TO ESTABLISHMENT M SW'LY OF ESTABLISHMENT S.
- U
- ESTABLISHED U.S. 104C PER R1 BY INTERSECTION OF ESTABLISHMENTS Q AND T.
- V
- ESTABLISHED THE NW'LY LINE OF THE RESTRICTED USE AREA PER R50 BY HOLDING A LINE WITH RECORD ANGLE PER R60 FROM ESTABLISHMENT F SW'LY OF ESTABLISHMENT H.
- W
- ESTABLISHED U.S. 104A PER R1 BY HOLDING A RECORD DISTANCE OF 394.20 FEET PER R1 NW'LY OF ESTABLISHMENT B ALONG ESTABLISHMENT P.
- X
- ESTABLISHED U.S. 104 PER R1 BY HOLDING A RECORD DISTANCE OF 570.66 FEET PER R1 NW'LY OF ESTABLISHMENT T ALONG ESTABLISHMENT M.
- Y
- ESTABLISHING THE BULKHEAD LINE BY HOLDING A LINE BETWEEN ESTABLISHMENTS M AND X.
- Z
- ESTABLISHED THE TRUE POINT OF BEGINNING OF PARCEL 151, FACILITY HA55D OF R50 BY HOLDING A RECORD DISTANCE OF 135.83 FEET PER R61 SE'LY OF ESTABLISHMENT X ALONG ESTABLISHMENT M.
- AA
- ESTABLISHED THE FIRST THREE COURSES FROM THE TRUE POINT OF BEGINNING OF THE LAND BEING DESCRIBED AS FACILITY NO. HA55D, PARCEL 151 PER R61 BY HOLDING RECORD COURSES PER R61 SE'LY OF ESTABLISHMENT Z ALONG ESTABLISHMENT M.
- AB
- ESTABLISHED THE SE'LY LINE OF PARCEL 151, FACILITY HA55D OF R50 BY HOLDING A LINE PERPENDICULAR TO ESTABLISHMENT P SW'LY OF THE TERMINUS OF ESTABLISHMENT AB.
- AC
- ESTABLISHED THE SW'LY LINE OF PARCEL 151, FACILITY HA55D OF R50 BY HOLDING A LINE PARALLEL, AND A RECORD DISTANCE OF 70.00 FEET PER R50 SW'LY THE NW'LY PROLONGATION OF ESTABLISHMENT P.
- AD
- ESTABLISHED THE SW'LY CORNER OF PARCEL 151, FACILITY HA55D OF R50 BY INTERSECTION OF ESTABLISHMENTS AB AND AC.
- AE
- ESTABLISHED THE NW'LY CORNER OF PARCEL 151, FACILITY HA55D OF R50 BY HOLDING A RECORD DISTANCE OF 252.27 FEET PER R61 NW'LY OF ESTABLISHMENT AD ALONG ESTABLISHMENT AB.
- AF
- ESTABLISHED THE N'LY LINE OF PARCEL 151, FACILITY HA55D OF R50 BY HOLDING A LINE BETWEEN ESTABLISHMENT Z AND AE.

NOTES

RECORD DISTANCES SHOWN HEREON ARE AS THEY APPEAR ON THE DOCUMENT OF RECORD. DISTANCES MAY BE EITHER GRID OR GROUND, AS PER SAID RECORD.

REFERENCE DOCUMENTS IN THE REFERENCE LEGEND ARE LIVE HYPERLINKS TO SAID DOCUMENT.

BASIS OF BEARINGS

THE BASIS OF BEARINGS FOR THIS SURVEY IS BASED ON THE CALIFORNIA COORDINATE SYSTEM (CCS83), ZONE VI, NAD 83, OCS (2017.50) EPOCH ADJUSTMENT, AS DETERMINED LOCALLY BY A LINE BETWEEN CONTINUOUS GLOBAL POSITIONING STATIONS CGPS STATIONS (TRAK) AND (FVPK) BEING NORTH 67°14'53" WEST AS DERIVED FROM THE COORDINATES PUBLISHED BY THE CALIFORNIA SPATIAL REFERENCE CENTER (CSRC) ALONG WITH DATA SHEETS ON FILE IN THE OFFICE OF THE ORANGE COUNTY SURVEYOR.

HORIZONTAL DATUM

COORDINATES SHOWN ARE BASED ON THE CALIFORNIA COORDINATE SYSTEM (CCS83), ZONE VI, NAD 83, OCS (2017.50) EPOCH ADJUSTMENT.

ALL DISTANCES SHOWN ARE GRID, UNLESS OTHERWISE NOTED. TO OBTAIN GROUND DISTANCE MULTIPLY A GRID DISTANCE BY 1.00002988.

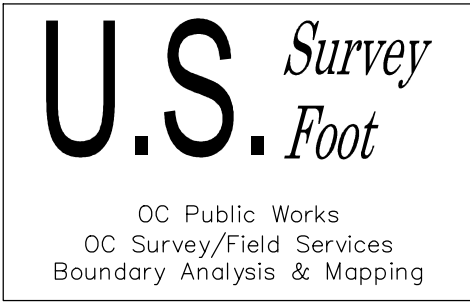
COMBINATION FACTOR WAS HELD AT POINT NUMBER 2747 N:2166856.99, E:6064180.44, ELEVATION= 10.57, (MONUMENT 11).

RECORD DISTANCES SHOWN HEREON ARE AS THEY APPEAR ON THE DOCUMENT OF RECORD. DISTANCES MAY BE EITHER GRID OR GROUND, AS PER SAID RECORD.

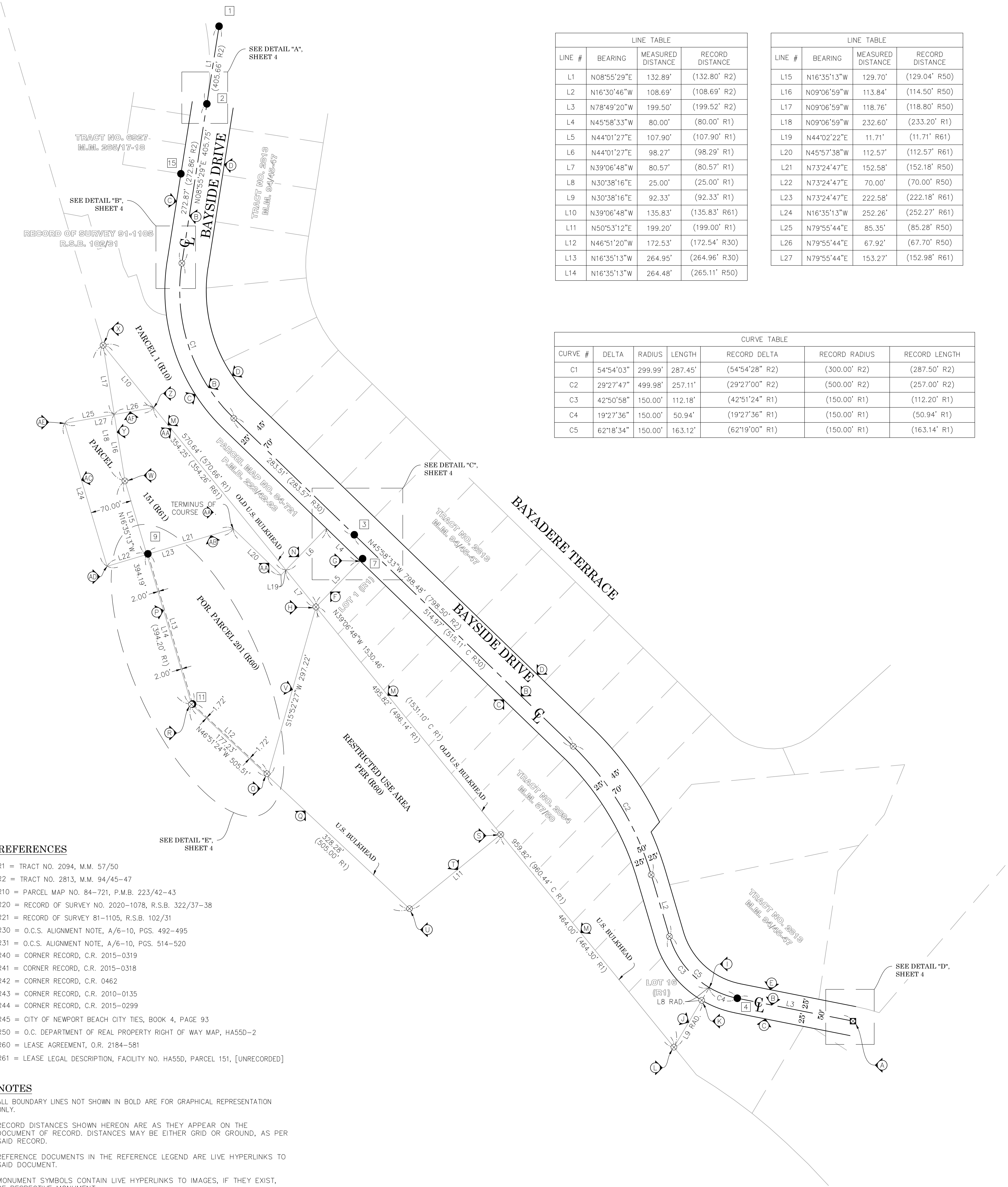
ALL DISTANCES ARE BASED ON THE U.S. SURVEY FOOT.

REFERENCES

- R1 = TRACT NO. 2094, M.M. 57/50
- R2 = TRACT NO. 2813, M.M. 94/45-47
- R10 = PARCEL MAP NO. 84-721, P.M.B. 223/42-43
- R20 = RECORD OF SURVEY NO. 2020-1078, R.S.B. 322/37-38
- R21 = RECORD OF SURVEY 81-1105, R.S.B. 102/31
- R30 = O.C.S. ALIGNMENT NOTE, A/6-10, PGS. 492-495
- R31 = O.C.S. ALIGNMENT NOTE, A/6-10, PGS. 514-520
- R40 = CORNER RECORD, C.R. 2015-0319
- R41 = CORNER RECORD, C.R. 2015-0318
- R42 = CORNER RECORD, C.R. 0462
- R43 = CORNER RECORD, C.R. 2010-0135
- R44 = CORNER RECORD, C.R. 2015-0299
- R45 = CITY OF NEWPORT BEACH CITY TIES, BOOK 4, PAGE 93
- R50 = O.C. DEPARTMENT OF REAL PROPERTY RIGHT OF WAY MAP, HA55D-2
- R60 = LEASE AGREEMENT, O.R. 2184-581
- R61 = LEASE LEGAL DESCRIPTION, FACILITY NO. HA55D, PARCEL 151, [UNRECORDED]



MARK	DATE	ITEM	COUNTY OF ORANGE OC PUBLIC WORKS OC SURVEY/FIELD SERVICES/BOUNDARY ANALYSIS & MAPPING		
			NEWPORT HARBOR PARKING LOT UPGRADES		
			BOUNDARY MAP NOTES		
			PROJECT LIMITS: APN 050-252-05, APN 050-252-03, APN 052-222-01		
			DATE OF SURVEY:06/08/2022		SHEET NO. 2 of 5
			MAPPING		
			OFFICE CHECK		
			FIELD CHECK		
			SCALE:N/A		
			W.O. #EC41896		FILE #2122PW-CM0007
FILE:NEWPORT HARBOR PATROL_BOUNDARY_2022.DWG					
REVISIONS					



REFERENCES

- R1 = TRACT NO. 2094, M.M. 57/50
R2 = TRACT NO. 2813, M.M. 94/45-47
R10 = PARCEL MAP NO. 84-721, P.M.B. 223/42-43
R20 = RECORD OF SURVEY NO. 2020-1078, R.S.B. 322/37-38
R21 = RECORD OF SURVEY 81-1105, R.S.B. 102/31
R30 = O.C.S. ALIGNMENT NOTE, A/6-10, PGS. 492-495
R31 = O.C.S. ALIGNMENT NOTE, A/6-10, PGS. 514-520
R40 = CORNER RECORD, C.R. 2015-0319
R41 = CORNER RECORD, C.R. 2015-0318
R42 = CORNER RECORD, C.R. 0462
R43 = CORNER RECORD, C.R. 2010-0135
R44 = CORNER RECORD, C.R. 2015-0299
R45 = CITY OF NEWPORT BEACH CITY TIES, BOOK 4, PAGE 93
R50 = O.C. DEPARTMENT OF REAL PROPERTY RIGHT OF WAY MAP, HA55D-2
R60 = LEASE AGREEMENT, O.R. 2184-581
R61 = LEASE LEGAL DESCRIPTION, FACILITY NO. HA55D, PARCEL 151, [UNRECORDED]

NOTES

ALL BOUNDARY LINES NOT SHOWN IN BOLD ARE FOR GRAPHICAL REPRESENTATION ONLY.

RECORD DISTANCES SHOWN HEREON ARE AS THEY APPEAR ON THE DOCUMENT OF RECORD. DISTANCES MAY BE EITHER GRID OR GROUND, AS PER SAID RECORD.

REFERENCE DOCUMENTS IN THE REFERENCE LEGEND ARE LIVE HYPERLINKS TO SAID DOCUMENT.

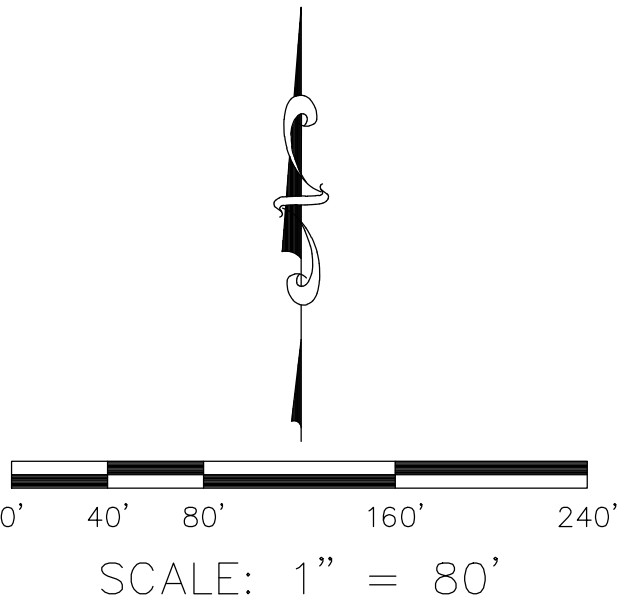
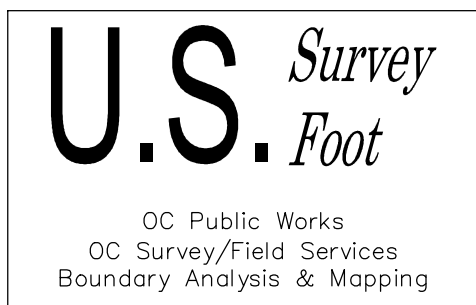
MONUMENT SYMBOLS CONTAIN LIVE HYPERLINKS TO IMAGES, IF THEY EXIST, OF RESPECTIVE MONUMENT.

SEE SHEET 2 FOR MONUMENT AND ESTABLISHMENT NOTES.

SEE SHEET 4 FOR DETAILS.

LEGEND

- FOUND MONUMENT AS NOTED
- ⊗ S.F.N. - SEARCHED, FOUND NOTHING
- ⊠ S.F.N., ESTABLISHED BY TIES
- C CALC FROM RECORD MAP
- R RECORD MAP

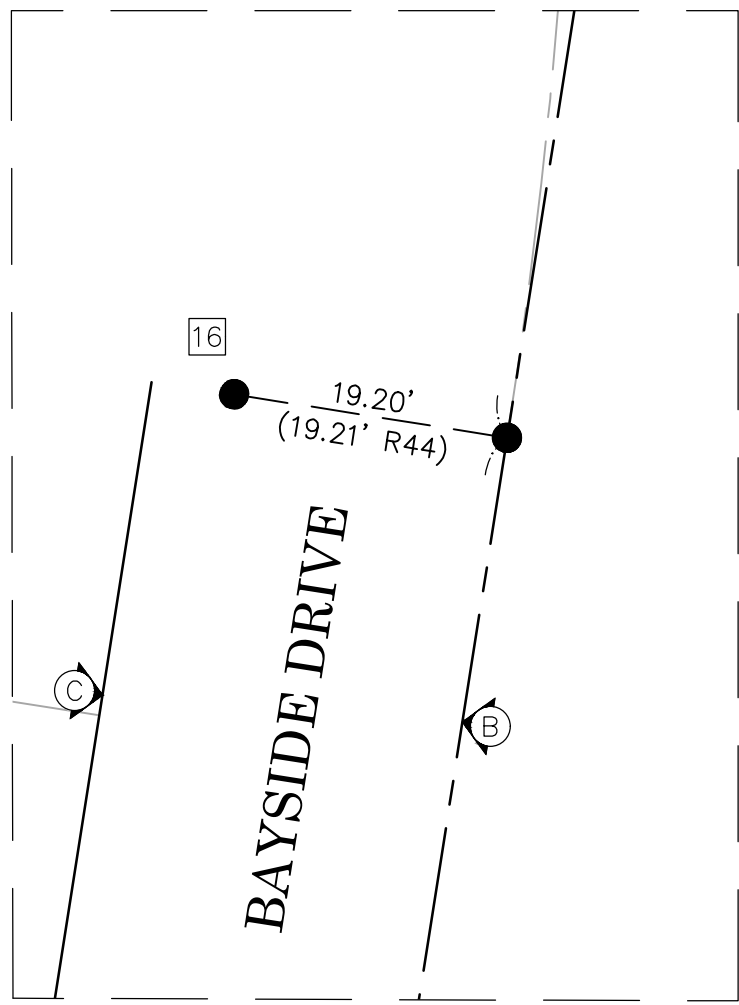


LINE TABLE			
LINE #	BEARING	MEASURED DISTANCE	RECORD DISTANCE
L1	N08°55'29"E	132.89'	(132.80' R2)
L2	N16°30'46"W	108.69'	(108.69' R2)
L3	N78°49'20"W	199.50'	(199.52' R2)
L4	N45°58'33"W	80.00'	(80.00' R1)
L5	N44°01'27"E	107.90'	(107.90' R1)
L6	N44°01'27"E	98.27'	(98.29' R1)
L7	N39°06'48"W	80.57'	(80.57' R1)
L8	N30°38'16"E	25.00'	(25.00' R1)
L9	N30°38'16"E	92.33'	(92.33' R1)
L10	N39°06'48"W	135.83'	(135.83' R61)
L11	N50°53'12"E	199.20'	(199.00' R1)
L12	N46°51'20"W	172.53'	(172.54' R30)
L13	N16°35'13"W	264.95'	(264.96' R30)
L14	N16°35'13"W	264.48'	(265.11' R50)

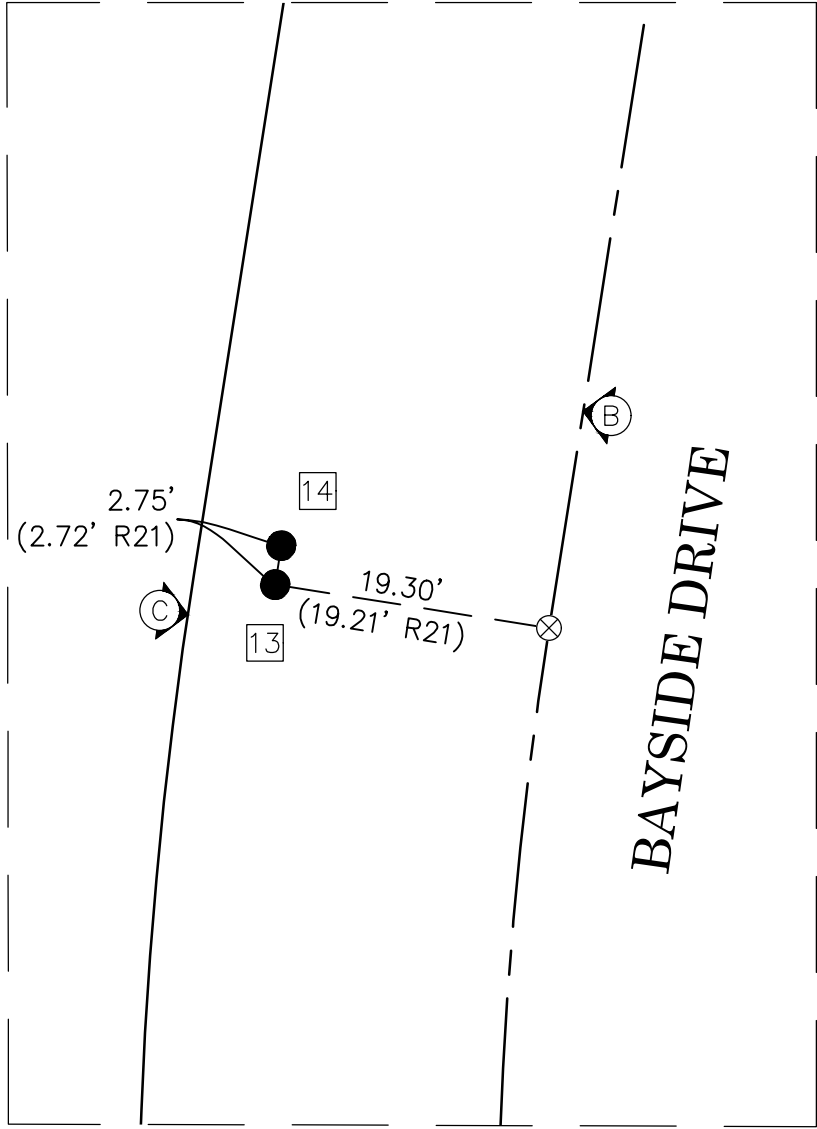
LINE TABLE			
LINE #	BEARING	MEASURED DISTANCE	RECORD DISTANCE
L15	N16°35'13"W	129.70'	(129.04' R50)
L16	N09°06'59"W	113.84'	(114.50' R50)
L17	N09°06'59"W	118.76'	(118.80' R50)
L18	N09°06'59"W	232.60'	(233.20' R1)
L19	N44°02'22"E	11.71'	(11.71' R61)
L20	N45°57'38"W	112.57'	(112.57' R61)
L21	N73°24'47"E	152.58'	(152.18' R50)
L22	N73°24'47"E	70.00'	(70.00' R50)
L23	N73°24'47"E	222.58'	(222.18' R61)
L24	N16°35'13"W	252.26'	(252.27' R61)
L25	N79°55'44"E	85.35'	(85.28' R50)
L26	N79°55'44"E	67.92'	(67.70' R50)
L27	N79°55'44"E	153.27'	(152.98' R61)

CURVE TABLE					
CURVE #	DELTA	RADIUS	LENGTH	RECORD DELTA	RECORD RADIUS
C1	54°54'03"	299.99'	287.45'	(54°54'28" R2)	(300.00' R2)
C2	29°27'47"	499.98'	257.11'	(29°27'00" R2)	(500.00' R2)
C3	42°50'58"	150.00'	112.18'	(42°51'24" R1)	(150.00' R1)
C4	19°27'36"	150.00'	50.94'	(19°27'36" R1)	(150.00' R1)
C5	62°18'34"	150.00'	163.12'	(62°19'00" R1)	(150.00' R1)

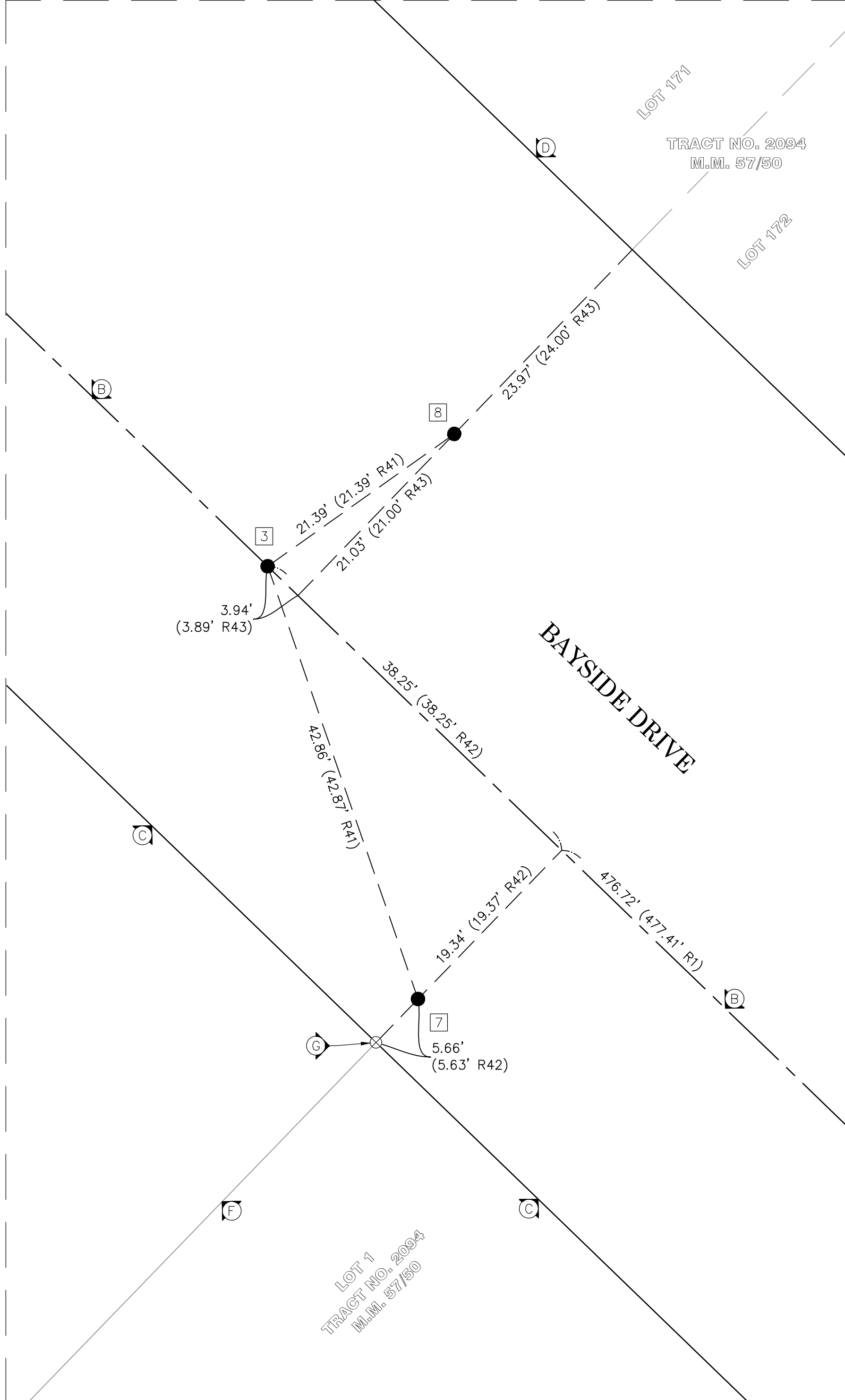
			COUNTY OF ORANGE OC PUBLIC WORKS OC SURVEY/FIELD SERVICES/BOUNDARY ANALYSIS & MAPPING			
			NEWPORT HARBOR PARKING LOT UPGRADES			
			BOUNDARY MAP			
			PROJECT LIMITS: APN 050-252-05, APN 050-252-03, APN 052-222-01			
			DATE OF SURVEY: 06/08/2022	BY: J. RUSSO & CREW		SHEET NO. 3 of 5
			MAPPING	BY: A. VU		
			OFFICE CHECK	BY: M. KUBISTY, PLS		
			FIELD CHECK	BY: J. RUSSO		
MARK	DATE	ITEM	SCALE: 1" = 80'	W.O. #EC41896	FILE #2122PW-CM0007	
REVISIONS			FILE: NEWPORT HARBOR PATROL_BOUNDARY_2022.DWG			



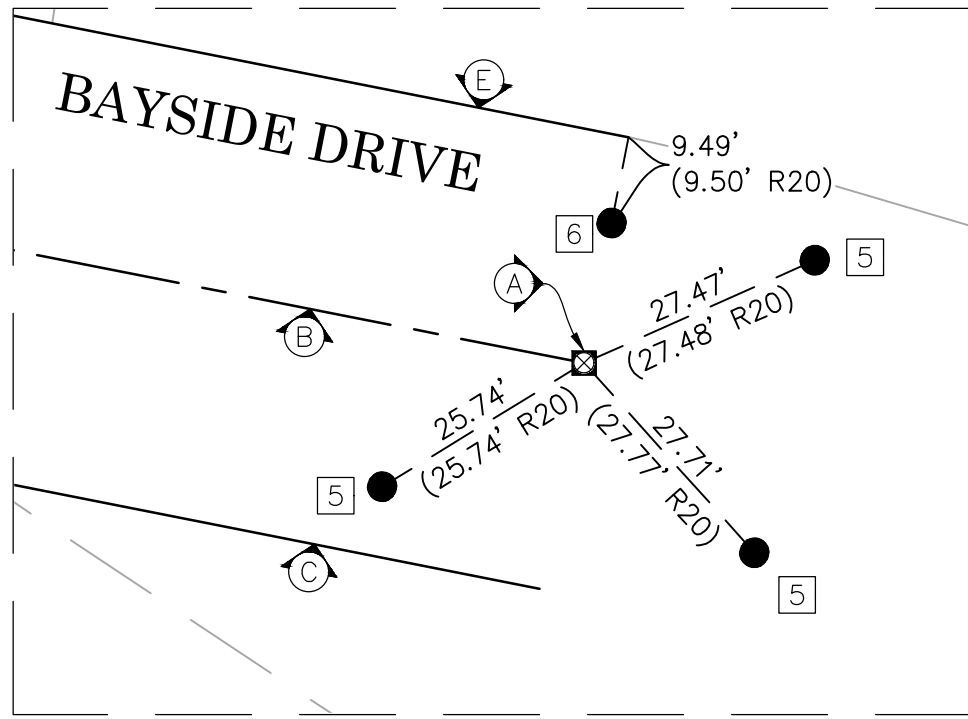
DETAIL "A"
N.T.S.



DETAIL "B"
N.T.S.



DETAIL "C"
N.T.S.



DETAIL "D"
N.T.S.

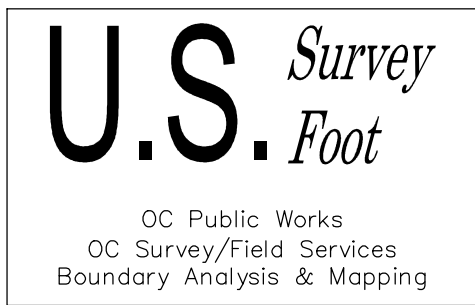
REFERENCES

- R1 = TRACT NO. 2094, M.M. 57/50
R2 = TRACT NO. 2813, M.M. 94/45-47
R10 = PARCEL MAP NO. 84-721, P.M.B. 223/42-43
R20 = RECORD OF SURVEY NO. 2020-1078, R.S.B. 322/37-38
R21 = RECORD OF SURVEY 81-1105, R.S.B. 102/31
R30 = O.C.S. ALIGNMENT NOTE, A/6-10, PGS. 492-495
R31 = O.C.S. ALIGNMENT NOTE, A/6-10, PGS. 514-520
R40 = CORNER RECORD, C.R. 2015-0319
R41 = CORNER RECORD, C.R. 2015-0318
R42 = CORNER RECORD, C.R. 0462
R43 = CORNER RECORD, C.R. 2010-0135
R44 = CORNER RECORD, C.R. 2015-0299
R45 = CITY OF NEWPORT BEACH CITY TIES, BOOK 4, PAGE 93
R50 = O.C. DEPARTMENT OF REAL PROPERTY RIGHT OF WAY MAP, HA55D-2
R60 = LEASE AGREEMENT, O.R. 2184-581
R61 = LEASE LEGAL DESCRIPTION, FACILITY NO. HA55D, PARCEL 151, [UNRECORDED]

DETAIL "E"
N.T.S.

NOTES

- ALL BOUNDARY LINES NOT SHOWN IN BOLD ARE FOR GRAPHICAL REPRESENTATION ONLY.
- RECORD DISTANCES SHOWN HEREON ARE AS THEY APPEAR ON THE DOCUMENT OF RECORD. DISTANCES MAY BE EITHER GRID OR GROUND, AS PER SAID RECORD.
- REFERENCE DOCUMENTS IN THE REFERENCE LEGEND ARE LIVE HYPERLINKS TO SAID DOCUMENT.
- MONUMENT SYMBOLS CONTAIN LIVE HYPERLINKS TO IMAGES, IF THEY EXIST, OF RESPECTIVE MONUMENT.
- SEE SHEET 2 FOR MONUMENT AND ESTABLISHMENT NOTES.

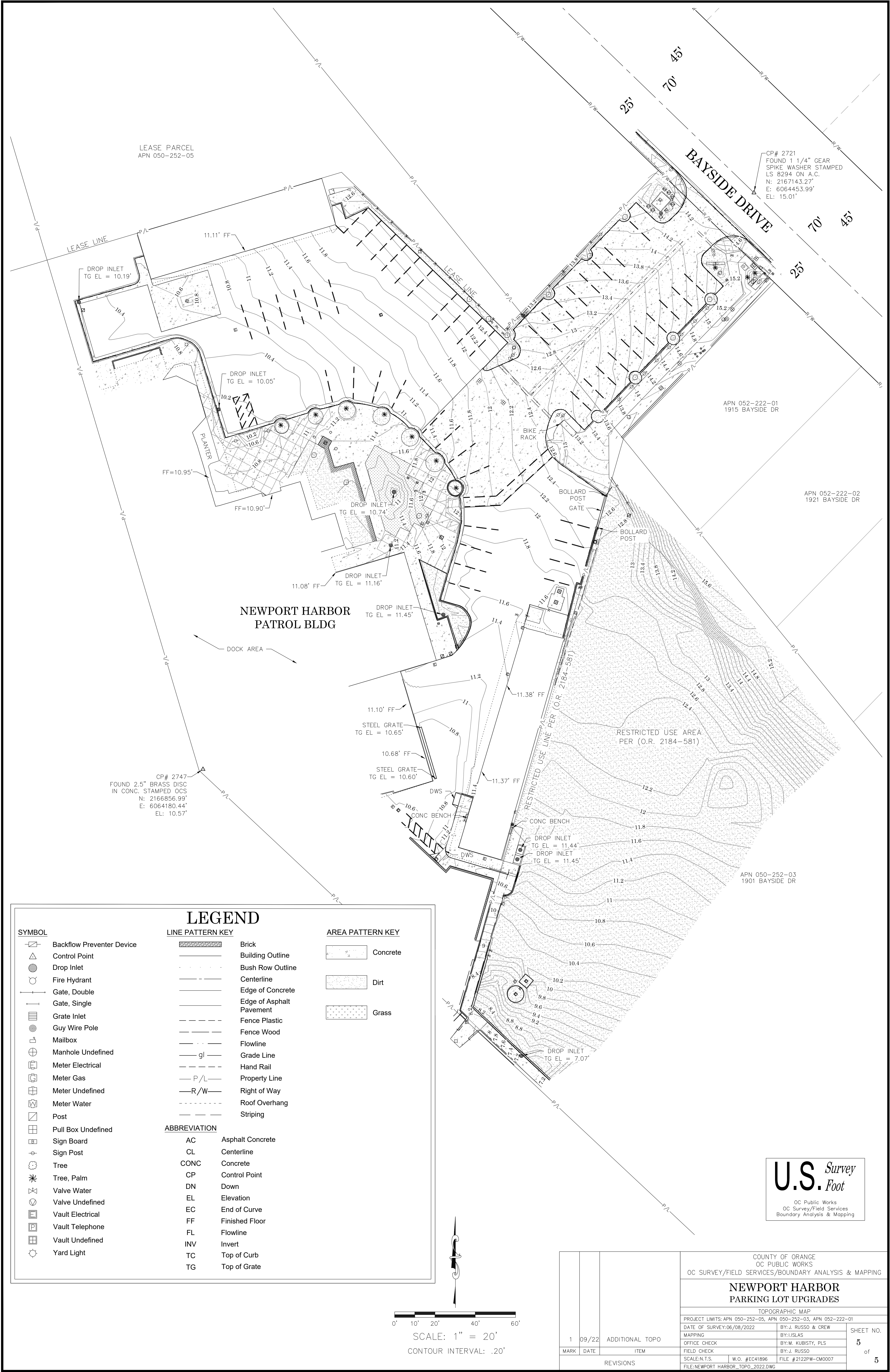


LEGEND

- FOUND MONUMENT AS NOTED
⊗ S.F.N. - SEARCHED, FOUND NOTHING
⊠ S.F.N., ESTABLISHED BY TIES
C CALC FROM RECORD MAP
R RECORD MAP



				COUNTY OF ORANGE OC PUBLIC WORKS OC SURVEY/FIELD SERVICES/BOUNDARY ANALYSIS & MAPPING	
				NEWPORT HARBOR PARKING LOT UPGRADES	
				BOUNDARY MAP DETAILS	
				PROJECT LIMITS: APN 050-252-05, APN 050-252-03, APN 052-222-01	
		DATE OF SURVEY: 06/08/2022		BY: J. RUSSO & CREW	
		MAPPING		BY: A. VU	
		OFFICE CHECK		BY: M. KUBISTY, PLS	
		FIELD CHECK		BY: J. RUSSO	
MARK	DATE	ITEM			
		REVISIONS			
		SCALE: N.T.S.		W.O. #EC41896	FILE # 2122PW-CM0007
				FILE: NEWPORT HARBOR PATROL_BOUNDARY_2022.DWG	



SYMBOL

Backflow Preventer Device

Control Point

Drop Inlet

Fire Hydrant

Gate, Double

Gate, Single

Grate Inlet

Guy Wire Pole

Mailbox

Manhole Undefined

Meter Electrical

Meter Gas

Meter Undefined

Meter Water

Post

Pull Box Undefined

Sign Board

Sign Post

Tree

Tree, Palm

Valve Water

Valve Undefined

Vault Electrical

Vault Telephone

Vault Undefined

Yard Light

LINE PATTERN KEY

Brick

Building Outline

Bush Row Outline

Centerline

Edge of Concrete

Edge of Asphalt Pavement

Fence Plastic

Fence Wood

Flowline

Grade Line

Hand Rail

Property Line

Right of Way

Roof Overhang

Striping

ABBREVIATION

AC

Asphalt Concrete

CL

Centerline

CONC

Concrete

CP

Control Point

DN

Down

EL

Elevation

EC

End of Curve

FF

Finished Floor

FL

Flowline

INV

Invert

TC

Top of Curb

TG

Top of Grate

AREA PATTERN KEY

Concrete

Dirt

Grass

U.S. Survey
Foot

OC Public Works
OC Survey/Field Services
Boundary Analysis & Mapping

				COUNTY OF ORANGE OC PUBLIC WORKS OC SURVEY/FIELD SERVICES/BOUNDARY ANALYSIS & MAPPING	
				NEWPORT HARBOR PARKING LOT UPGRADES	
				TOPOGRAPHIC MAP	
				PROJECT LIMITS: APN 050-252-05, APN 050-252-03, APN 052-222-01	
		DATE OF SURVEY: 06/08/2022		BY: J. RUSSO & CREW	
		MAPPING		BY: J. ISLAS	
		OFFICE CHECK		BY: M. KUBISTY, PLS	
		FIELD CHECK		BY: J. RUSSO	
		SCALE: N.T.S.		W.O. #EC41896	
				FILE # 2122PW-CM0007	
		FILE: NEWPORT HARBOR_TOPO_2022.DWG			
1	09/22	ADDITIONAL TOPO		SHEET NO. 5 of 5	
MARK	DATE	ITEM			
		REVISIONS			