

RECORD OF SURVEY NO. 2023-1128

IN THE CITIES OF IRVINE, LAKE FOREST AND IN THE UNINCORPORATED TERRITORY OF THE COUNTY OF ORANGE, STATE OF CALIFORNIA

BEING A SURVEY OF PORTIONS OF LOTS 299, 300, 301, AND 302 OF BLOCK 174 OF IRVINE'S SUBDIVISION AS FILED IN BOOK 1, PAGE 88 OF MISCELLANEOUS MAPS AND THE NORTHWESTERLY LINE OF RANCHO CANADA DE LOS ALISOS PER MAP FILED IN LOS ANGELES BOOK 1, PAGES 39 AND 40, BOTH RECORDS OF ORANGE COUNTY, STATE OF CALIFORNIA

ORANGE COUNTY PUBLIC WORKS— SURVEY FIELD UNIT MICHAEL KUBISTY, PLS 8036
DATE OF SURVEY: SEPTEMBER 2019

ACCEPTED AND FILED AT THE REQUEST OF THE ORANGE COUNTY SURVEYOR'S OFFICE

DATE _____

TIME _____ FEE \$ _____

INSTRUMENT NO. _____

BOOK _____ PAGE _____

HUGH NGUYEN
COUNTY CLERK—RECORDER

BY _____

DEPUTY

EXEMPT RECORDING REQUESTED
PER GOVERNMENT CODE 27383

SURVEYOR'S STATEMENT:

THIS MAP CORRECTLY REPRESENTS A SURVEY MADE BY ME OR UNDER MY DIRECTION IN CONFORMANCE WITH REQUIREMENTS OF THE PROFESSIONAL LAND SURVEYORS' ACT AT THE REQUEST OF THE COUNTY OF ORANGE SHERIFF'S DEPARTMENT IN JUNE, 2023.



MICHAEL KUBISTY, P.L.S. SENIOR LAND SURVEYOR DATE _____

COUNTY SURVEYOR'S STATEMENT:

THIS MAP HAS BEEN EXAMINED IN ACCORDANCE WITH THE PROFESSIONAL LAND SURVEYORS' ACT THIS _____ DAY OF _____, 2024.

KEVIN R. HILLS, COUNTY SURVEYOR
L.S. 6617



BY: LILY M. N. SANDBERG, DEPUTY COUNTY SURVEYOR
P.L.S. 8402

BASIS OF BEARINGS

THE BEARINGS SHOWN HEREON ARE BASED ON THE BEARING BETWEEN CGPS STATION "TRAK" AND CGPS STATION "OEOC" BEING NORTH 19°21'48.72" EAST PER RECORDS ON FILE IN THE OFFICE OF THE ORANGE COUNTY SURVEYOR.

DATUM STATEMENT

COORDINATES SHOWN ARE BASED ON THE CALIFORNIA COORDINATE SYSTEM (CCS83), ZONE VI, NAD 83, 2017.50 EPOCH ADJUSTMENT.

ALL MEASURED DISTANCES SHOWN ARE GRID, UNLESS OTHERWISE NOTED. MULTIPLY GRID DISTANCE BY 1.00005080 TO OBTAIN A GROUND DISTANCE. THIS COMBINATION FACTOR IS PROJECT SPECIFIC AND WAS DERIVED BY AVERAGING CONTROL MONUMENTS [1] AND [2].

[1] N: 2181877.64', E: 6117140.51'

[2] N: 2196245.81', E: 6127545.67'

ALL DISTANCES ARE BASED ON THE U.S. SURVEY FOOT.

RECORD DATA NOTE

RECORD DISTANCES SHOWN HEREON ARE GROUND OR LEFT AS SHOWN ON DOCUMENTS OF RECORD.

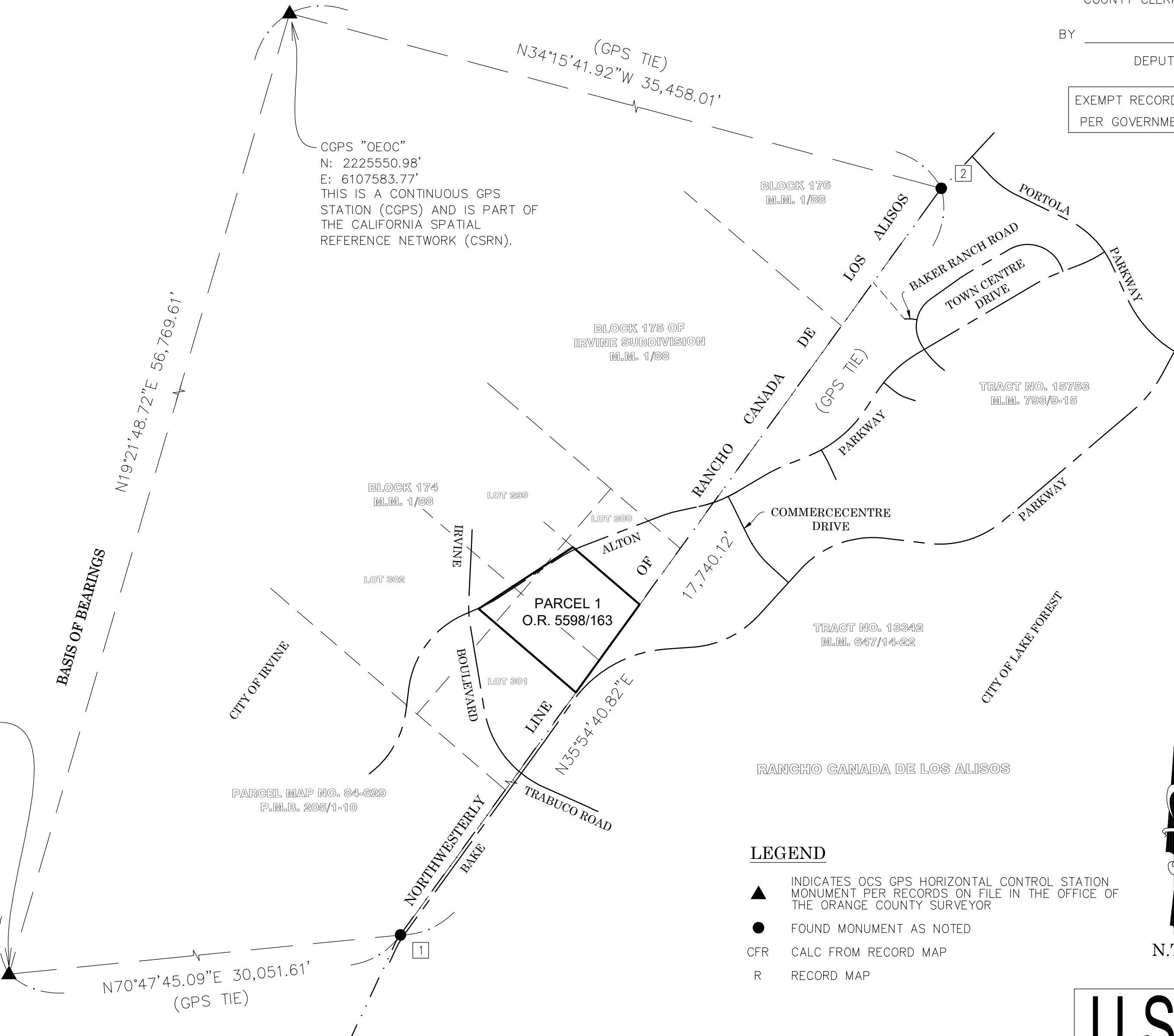
STATEMENT OF PURPOSE

THE PURPOSE OF THIS RECORD OF SURVEY IS TO RE-ESTABLISH AND MONUMENT A PORTION OF LOTS 299-302, BLOCK 174 OF THE IRVINE SUBDIVISION, M.M. 1/88, MORE PARTICULARLY DESCRIBED AS PARCEL 1 IN DEED RECORDED JANUARY 20, 1961 IN BOOK 5598 PAGE 163, O.R. AND TO RE-ESTABLISH THE NORTHWESTERLY LINE OF RANCHO CANADA DE LOS ALISOS AS SHOWN ON L.A. BOOK 1/39-40.

NOTES

SEE SHEET 2 FOR MONUMENT AND ESTABLISHMENT NOTES.

A DILIGENT SEARCH FOR ALL RECORD MONUMENTS IN THE AREA WAS PERFORMED TO ASSIST IN ESTABLISHING THE BOUNDARY LINES OF THIS SURVEY. ALL OF THE MONUMENTS THAT WERE FOUND ARE SHOWN HEREON.



LEGEND

- ▲ INDICATES OCS GPS HORIZONTAL CONTROL STATION MONUMENT PER RECORDS ON FILE IN THE OFFICE OF THE ORANGE COUNTY SURVEYOR
- FOUND MONUMENT AS NOTED
- CFR CALC FROM RECORD MAP
- R RECORD MAP

N.T.S

U.S. Survey Foot

OC Public Works
OC Survey/Field Services
Boundary Analysis & Mapping

RECORD OF SURVEY NO. 2023-1128

IN THE CITIES OF IRVINE, LAKE FOREST AND IN THE IN UNINCORPORATED TERRITORY OF ORANGE COUNTY, STATE OF CALIFORNIA

COUNTY OF ORANGE PUBLIC WORKS— SURVEY FIELD UNIT MICHAEL KUBISTY, PLS 8036

DATE OF SURVEY: SEPTEMBER 2019

MONUMENT NOTES

- 1

FOUND 4 INCH BRASS DISK STAMPED "OCS RANCHO SAN JOAQUIN AND RANCHO CANADA DE LOS ALISOS" PER R20, FLUSH IN DIRT, ACCEPTED AS ANGLE POINT IN THE NORTHWESTERLY LINE OF RANCHO CANADA DE LOS ALISOS.
- 2

FOUND 2 INCH IRON PIPE WITH TAG STAMPED "LS 4965" PER R1, DOWN 1.5 FEET IN DIRT, ACCEPTED AS ANGLE POINT IN THE NORTHWESTERLY LINE OF RANCHO CANADA DE LOS ALISOS.
- 3

FOUND 2 INCH IRON PIPE WITH TAG STAMPED "LS 4693" PER R2, DOWN 0.3 FEET IN DIRT, ACCEPTED AS POINT ON THE NORTHWESTERLY LINE OF RANCHO CANADA DE LOS ALISOS.
- 4

FOUND SPIKE AND WASHER STAMPED "LS 4693" PER R2, DOWN 0.1 FEET IN AC, ACCEPTED AS THE CENTERLINE BC OF PORTOLA PARKWAY.
- 5

FOUND 2 INCH IRON PIPE WITH TAG, ILLEGIBLE, FITS POSITION OF 2 INCH IRON PIPE TAGGED "LS 4693" PER R1, DOWN 0.4 FEET IN DIRT, ACCEPTED AS POINT ON CENTERLINE OF PORTOLA PARKWAY.
- 6

FOUND 1 INCH IRON PIPE WITH ILLEGIBLE PUNCHED PLASTIC CAP, NO REFERENCE, ACCEPTED AS POSITION OF 1 INCH IRON PIPE "LS 5133" PER R30, DOWN 0.3 FEET. ACCEPTED AS POINT ON RANCHO CANADA DE LOS ALISOS LINE.
- 7

FOUND SPIKE AND TAG STAMPED "RCE 19442" PER R31, FLUSH IN AC, ACCEPTED AS POINT ON LINE OF RANCHO CANADA DE LOS ALISOS.
- 8

FOUND SPIKE AND WASHER STAMPED "LS 5134" PER R21, FLUSH IN AC, ACCEPTED AS POINT ON CENTERLINE OF ALTON PARKWAY.
- 9

FOUND SPIKE AND WASHER STAMPED "LS 5134" PER R21, FLUSH IN AC, ACCEPTED AS POINT ON CENTERLINE OF ALTON PARKWAY, S66°19'47"W 0.06 FEET FROM CENTERLINE BC.
- 10

FOUND 2 INCH IRON PIPE WITH TAG STAMPED "LS 5134" PER R21, FLUSH IN DIRT, ACCEPTED AS POINT ON CENTERLINE OF ALTON PARKWAY, N56°45'22"E 0.10 FEET FROM CENTERLINE EC.
- 11

FOUND SPIKE AND WASHER STAMPED "LS 5134" PER R21, FLUSH IN AC, ACCEPTED AS POINT ON CENTERLINE OF ALTON PARKWAY.
- 12

FOUND 2 INCH IRON PIPE WITH TAG STAMPED "LS 5134" PER R21, DOWN 0.2 FEET IN DIRT, ACCEPTED AS CENTERLINE BC OF ALTON PARKWAY.
- 13

FOUND 2 INCH IRON PIPE WITH TAG STAMPED "LS 5134" PER R21, DOWN 0.1' IN DIRT, ACCEPTED AS POINT ON CENTERLINE OF ALTON PARKWAY, N68°59'05"E 0.14 FEET FROM CENTERLINE EC.
- 14

FOUND 2 INCH IRON PIPE WITH TAG STAMPED "LS 5134" PER R21, FLUSH IN DIRT, ACCEPTED AS POINT ON CENTERLINE OF ALTON PARKWAY, 0.05 FEET N68°59'05"E FROM CENTERLINE BC.
- 15

FOUND 2 INCH IRON PIPE WITH TAG STAMPED "LS 5134" PER R21, FLUSH IN DIRT, ACCEPTED AS POINT ON CENTERLINE OF ALTON PARKWAY, S77°51'45"W 0.13 FEET FROM CENTERLINE EC.
- 16

FOUND 2 INCH IRON PIPE WITH TAG STAMPED "LS 5134" PER R21, FLUSH IN DIRT, ACCEPTED AS POINT ON CENTERLINE OF ALTON PARKWAY, S77°51'45"W 0.11 FEET FROM CENTERLINE BC.
- 17

FOUND PUNCHED SPIKE AND WASHER STAMPED "LS 5134" PER R21, FLUSH IN AC, ACCEPTED AS CENTERLINE INTERSECTION OF ALTON PARKWAY AND COMMERCENTRE DRIVE.
- 18

FOUND 2 INCH HOLLOW PIPE IN WELL, NO REFERENCE, DOWN 1.5 FEET IN AC, S24°22'36"E 0.74 FEET FROM CENTERLINE EC OF ALTON PARKWAY.
- 19

FOUND 2-1/2 INCH BRASS CAP STAMPED "RS 2012-1067 LS 5134" PER R22, FLUSH IN CONCRETE, ACCEPTED AS CENTERLINE EC OF ALTON PARKWAY.

- 20

FOUND 2-1/2 INCH BRASS CAP STAMPED "RS 2012-1067 LS 5134" PER R22, FLUSH IN CONCRETE, ACCEPTED AS CENTERLINE BC OF ALTON PARKWAY.
- 21

FOUND PUNCHED SPIKE AND WASHER STAMPED "PLS 5134" PER R3, FLUSH IN AC, ACCEPTED AS POINT ON CENTERLINE OF ALTON PARKWAY.
- 22

FOUND 2-1/2 INCH BRASS CAP STAMPED "RS 2012-1067 LS 5134" PER R22, FLUSH IN CONCRETE, ACCEPTED AS CENTERLINE EC OF ALTON PARKWAY.
- 23

FOUND 2-1/2 INCH BRASS CAP STAMPED "RS 2012-1067 LS 5134" IN WELL PER R22, DOWN 1.6 FEET DOWN IN AC, ACCEPTED AS CENTERLINE BC OF ALTON PARKWAY.
- 24

FOUND PUNCHED SPIKE AND WASHER STAMPED "LS 4965" PER R23, FLUSH IN AC, ACCEPTED AS POINT ON CENTERLINE OF TOWNE CENTRE DRIVE, S30°28'58"E 0.17 FEET FROM THE CENTERLINE INTERSECTION OF TOWNE CENTRE DRIVE AND ALTON PARKWAY.
- 25

FOUND PUNCHED SPIKE AND WASHER STAMPED "LS 4965" PER R23, DOWN 0.1 FEET IN AC, ACCEPTED AS POINT ON CENTERLINE OF TOWNE CENTRE DRIVE, S60°28'58"E 0.11 FEET FROM THE CENTERLINE BC.
- 26

FOUND PUNCHED SPIKE AND WASHER STAMPED "LS 4965" PER R4, DOWN 0.1 FEET IN AC, ACCEPTED AS THE CENTERLINE INTERSECTION OF TOWNE CENTRE DRIVE AND BAKER RANCH ROAD.
- 27

FOUND 1 INCH IRON PIPE AND TAG STAMPED "LS 6673" PER R5, FLUSH IN DIRT, ACCEPTED AS POINT ON NE'LY LINE OF LOT 5 OF R5.
- 29

FOUND 2 INCH IRON PIPE WITH TAG STAMPED "LS 2326" PER R5, UP 0.6 FEET IN DIRT, ACCEPTED AS POINT ON NE'LY LINE OF LOT "B" OF R5.
- 30

FOUND 1 INCH IRON PIPE WITH TAG STAMPED "LS 6673" PER R5, N40°22'17"W 0.08' FROM THE N'LY CORNER OF LOT "B" OF R5 AND OF THE NW'LY LINE OF RANCHO CANANA DE LOS ALISOS.
- 31

FOUND 1 INCH IRON PIPE WITH TAG STAMPED "LS 4965" PER R8, FLUSH IN DIRT, POINT IS S35°54'41"W 875.12 FEET FROM MONUMENT 2 AND S54°05'19"E 0.06 FEET FROM THE NW'LY LINE OF RANCHO CANADA DE LOS ALISOS.
- 32

FOUND 8" CONCRETE MONUMENT WITH 2-1/2 INCH BRASS DISK STAMPED "IRV. SUB. CC RANCHO CANADA ORANGE COUNTY SURVEYOR 175/176 9/91" PER R32, UP 0.5 FEET IN DIRT, POINT IS S35°54'41"W 3,127.81 FEET FROM MONUMENT 2 AND S54°05'19"E 2.86' FROM THE NW'LY LINE OF RANCHO CANADA DE LOS ALISOS. SEE "SURVEYOR NARRATIVE" ON SHEET 3 FOR ADDITIONAL INFORMATION.
- 33

FOUND 2 INCH IRON PIPE WITH TAG STAMPED "ORANGE COUNTY SURVEYOR" PER R20, UP 0.1 FEET IN DIRT, POINT IS S35°54'41"W 7,201.14 FEET FROM MONUMENT 2 AND S54°05'19"E 2.21 FEET FROM THE NW'LY LINE OF RANCHO CANADA DE LOS ALISOS.
- 34

FOUND 2 INCH IRON PIPE WITH TAG STAMPED "LS 5134" PER R3, DOWN 0.2 FEET IN DIRT. SHOWN AS 2" IRON PIPE WITH TAG STAMPED "LS 6673 ON R5. ACCEPTED AS POINT ON N'LY RIGHT OF WAY OF ALTON PARKWAY, POINT IS S35°54'41"W 7,223.06 FEET FROM MONUMENT 2 AND S54°05'19"E 0.67 FEET FROM THE NW'LY LINE OF RANCHO CANADA DE LOS ALISOS.
- 35

FOUND 1 INCH IRON PIPE WITH TAG STAMPED "LS 4965" PER R7, FLUSH IN DIRT, POINT IS S35°54'41"W 8,548.91 FEET FROM MONUMENT 2 AND S54°05'19"E 0.86 FEET FROM THE NW'LY LINE OF RANCHO CANADA DE LOS ALISOS.
- 36

FOUND 2 INCH IRON PIPE WITH TAG STAMPED "LS 4965" PER R7, FLUSH IN DIRT, POINT IS S35°54'41"W 9,360.40 FEET FROM MONUMENT 2 AND S54°05'19"E 2.00 FEET FROM THE NW'LY LINE OF RANCHO CANADA DE LOS ALISOS.

- 37

FOUND 2 INCH IRON PIPE WITH TAG STAMPED "LS 2168" PER R24, FLUSH IN DIRT, POINT IS S35°54'41"W 9,360.58 FEET FROM MONUMENT 2 AND S54°05'19"E 1.23 FEET FROM THE NW'LY LINE OF RANCHO CANADA DE LOS ALISOS.
- 38

FOUND LEAD TACK AND TAG STAMPED "ORANGE COUNTY SURVEYOR", DOWN 1.00 FEET IN CONCRETE FOOTING (DOWN 2.0 FEET PER R20). S49°16'21"E 1.65 FEET FROM THE NE'LY CORNER OF O.R. 5598/163. ACCEPTED AS POINT ON SE'LY PROLONGATION OF LINE ESTABLISHMENT 10.
- 39

FOUND 2 INCH IRON PIPE WITH NO TAG, ACCEPTED AS 2 INCH IRON PIPE WITH O.C.S. TAG SET PER R25, DOWN 0.3 FEET IN DIRT, S54°05'19"E 1.23 FEET FROM THE S'LY CORNER OF O.R. 5598/163.
- 40

FOUND 2 INCH IRON PIPE WITH TAG STAMPED "ORANGE COUNTY SURVEYOR" PER R20, DOWN 1.0 FOOT IN DIRT, ACCEPTED AS POINT ON SW'LY LINE OF PARCEL 5 OF R41.
- 41

FOUND 1 INCH IRON PIPE WITH TAG STAMPED "LS 5134" PER R21, FLUSH IN DIRT, ACCEPTED AS THE NORTH CORNER OF PARCEL 1 OF R42.
- 42

FOUND 1 INCH IRON PIPE WITH TAG STAMPED "LS 5134" PER R21, DOWN 0.3 FEET IN DIRT, POINT IS S49°16'21"E 126.99 FEET FROM MONUMENT 41 AND N40°43'39"E 0.07 FEET FROM THE NE'LY LINE OF PARCEL 1 OF R42.
- 43

FOUND PUNCHED SPIKE AND WASHER STAMPED "LS 5134" PER R21, FLUSH IN AC, ACCEPTED AS POINT ON SW'LY LINE OF PARCEL 1 OF R42, S49°16'21"E 0.12 FEET FROM THE W'LY CORNER OF PARCEL 1 OF R42.
- 44

FOUND LEAD TACK AND TAG STAMPED "LS 5134" IN LIEU OF NAIL & TAG "LS 5134" PER R21, FLUSH IN CONCRETE, POINT IS S49°16'21"E 55.27 FEET FROM ESTABLISHMENT 2 AND N60°43'39"E 0.06 FEET FROM THE SW'LY LINE OF PARCEL 1 OF R42.
- 45

FOUND 1 INCH IRON PIPE WITH TAG STAMPED "LS 3246" PER R12, DOWN 0.3 IN DIRT, POINT IS S49°16'21"E 82.52 FEET FROM ESTABLISHMENT 2 AND N40°43'39"E 0.05 FEET FROM THE SW'LY LINE OF PARCEL 1 OF R42.
- 46

FOUND PUNCHED SPIKE AND WASHER STAMPED "LS 4965" PER R13, FLUSH IN AC, ACCEPTED AS POINT ON SW'LY LINE OF PARCEL 1 OF R42.
- 47

SET 2 INCH IRON PIPE WITH TAG STAMPED "OCS SURVEY" FLUSH IN DIRT 10.00 FEET SOUTHEASTERLY FROM PROPERTY CORNER ON PL PROD.
- 48

SET LEAD, TACK AND TAG STAMPED "OCS SURVEY" FLUSH IN TOP OF CURB 9.75 FEET SOUTHEASTERLY FROM PROPERTY CORNER ON PL PROD.
- 49

SET LEAD, TACK AND TAG STAMPED "OCS SURVEY" FLUSH IN TOP OF CURB, IN MEDIAN ISLAND, 76.30 FEET NORTHWESTERLY FROM PROPERTY CORNER ON PL PROD.

ESTABLISHMENT NOTES

- A

ESTABLISHED THE NORTHWESTERLY LINE OF RANCHO CANADA DE LOS ALISOS BY HOLDING A LINE BETWEEN MONUMENTS 1 AND 2 .
- B

ESTABLISHED THE NORTHWESTERLY LINE OF RANCHO CANADA DE LOS ALISOS BY HOLDING A LINE BETWEEN MONUMENTS 2 AND 3 .
- C

ESTABLISHED THE CENTERLINE OF PORTOLA PARKWAY BY HOLDING A LINE BETWEEN MONUMENTS 4 AND 5 .
- D

ESTABLISHED THE CENTERLINE OF PORTOLA PARKWAY BY HOLDING A CURVE, CONCAVE SOUTHWESTERLY, RECORD RADIUS OF 1800.00 FEET PER R1, AND TANGENT TO LINE ESTABLISHMENT 6 .
- E

ESTABLISHED THE INTERSECTION OF RANCHO CANADA DE LOS ALISOS AND PORTOLA PARKWAY BY INTERSECTION OF ESTABLISHMENT 10 AND THE NORTHEASTERLY PROLONGATION OF LINE ESTABLISHMENT 8 .
- F

ESTABLISHED THE NORTHWESTERLY LINE OF RANCHO CANADA DE LOS ALISOS BY HOLDING A LINE BETWEEN MONUMENTS 1 AND 7 .
- G

ESTABLISHED THE CENTERLINE OF ALTON PARKWAY BY HOLDING A LINE BETWEEN MONUMENTS 8 AND 9 .
- H

ESTABLISHED THE CENTERLINE OF ALTON PARKWAY BY HOLDING A LINE BETWEEN MONUMENTS 10 AND 12 .
- I

ESTABLISHED THE CENTERLINE OF ALTON PARKWAY BY HOLDING A CURVE WITH RECORD RADIUS OF 2470.00 FEET PER R27 AND TANGENT TO LINE ESTABLISHMENTS 6 AND 10 .
- J

ESTABLISHED THE CENTERLINE OF ALTON PARKWAY BY HOLDING A LINE BETWEEN MONUMENTS 13 AND 14 .
- K

ESTABLISHED THE CENTERLINE OF ALTON PARKWAY BY HOLDING A CURVE WITH RECORD RADIUS OF 2470.00 FEET PER R27 AND TANGENT TO LINE ESTABLISHMENTS 8 AND 10 .
- L

ESTABLISHED THE CENTERLINE OF ALTON PARKWAY BY HOLDING A LINE BETWEEN MONUMENTS 15 AND 16 .
- M

ESTABLISHED THE CENTERLINE OF ALTON PARKWAY BY HOLDING A CURVE WITH RECORD RADIUS OF 2470.00 FEET PER R27 AND TANGENT TO LINE ESTABLISHMENTS 10 AND 10 .
- N

ESTABLISHED THE CENTERLINE OF ALTON PARKWAY BY LEAST SQUARE ADJUSTMENT BETWEEN MONUMENTS 16 AND 19 PER R22.
- O

ESTABLISHED THE CENTERLINE OF ALTON PARKWAY BY HOLDING A LINE BETWEEN MONUMENTS 19 AND 20 .
- P

ESTABLISHED THE CENTERLINE OF ALTON PARKWAY BY HOLDING A LINE BETWEEN MONUMENTS 22 AND 23 .
- Q

ESTABLISHED THE CENTERLINE OF ALTON PARKWAY BY HOLDING A CURVE WITH RECORD RADIUS OF 2400.00 FEET PER R22, R43 AND TANGENT TO LINE ESTABLISHMENTS 10 AND 10 .
- R

ESTABLISHED THE CENTERLINE OF ALTON PARKWAY AND TOWNE CENTRE DRIVE BY HOLDING LEAST SQUARE ADJUSTMENT BETWEEN MONUMENTS 23 AND 26 PER R22.
- S

ESTABLISHED THE CENTERLINE OF BAKER RANCH ROAD BY HOLDING RECORD COURSES PER R5 NORTHWESTERLY OF MONUMENT 26 .
- T

ESTABLISHED THE NORTHEASTERLY LINES OF LOT 5 AND LOT "B" OF R5 BY HOLDING A LINE BETWEEN MONUMENTS 27 AND 30 .
- U

ESTABLISHED THE NORTH CORNER OF LOT "B" OF R5 BY INTERSECTION OF LINE ESTABLISHMENTS A AND 10 .
- V

ESTABLISHED THE SOUTHWESTERLY LINE OF PARCEL 5 OF R41 BY HOLDING A LINE BETWEEN MONUMENTS 38 AND 40 .
- W

ESTABLISHED THE EAST CORNER OF PARCEL 1 OF R42 BY INTERSECTION OF LINE ESTABLISHMENTS A AND 10 .
- X

ESTABLISHED THE NORTHWESTERLY LINE OF PARCEL 1 OF R42 BY HOLDING A RECORD OFFSET OF 30.00 FEET PER R26 NORTHWESTERLY OF LINE ESTABLISHMENT 10 .
- Y

ESTABLISHED THE SOUTHWESTERLY LINE OF PARCEL 1 OF R42 BY HOLDING A LINE PARALLEL WITH LINE ESTABLISHMENT 10 SOUTHEASTERLY OF MONUMENT 43 .
- Z

ESTABLISHED THE WEST CORNER OF PARCEL 1 OF R42 BY INTERSECTION OF LINE ESTABLISHMENTS X AND 10 .
- AA

ESTABLISHED THE SOUTH CORNER OF R42 BY INTERSECTION OF LINE ESTABLISHMENTS A AND 10 .

NOTES

SEE SHEET 1 FOR STATEMENT OF PURPOSE, BASIS OF BEARINGS, AND DATUM STATEMENT.
SEE SHEET 2 FOR MONUMENT AND ESTABLISHMENT NOTES.
SEE SHEET 2 FOR TIE DISTANCES ALONG RANCHO CANADA DE LOS ALISOS FOR MONUMENTS 31, 32, 33, 34, 35, 36, 37 AND FOR TIE DISTANCES ALONG NE'LY AND SW'LY LINES OF PARCEL 1 OF R42 FOR MONUMENTS 42, 44, & 45

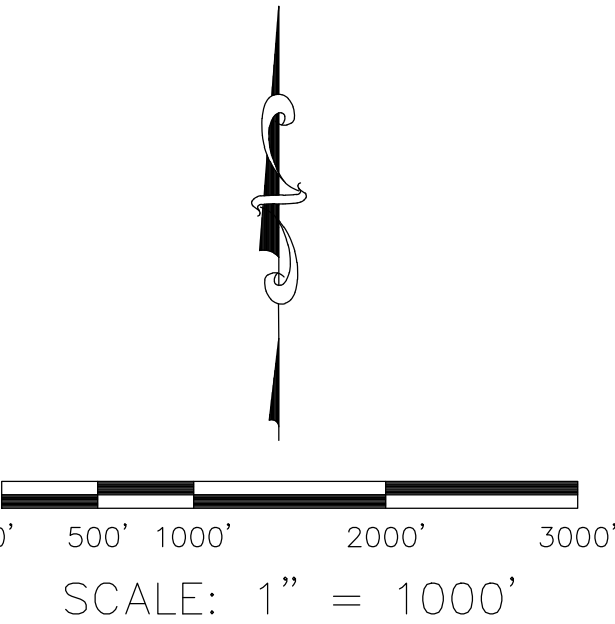
A DILIGENT SEARCH FOR ALL RECORD MONUMENTS IN THE AREA WAS PERFORMED TO ASSIST IN ESTABLISHING THE BOUNDARY LINES OF THIS SURVEY. ALL OF THE MONUMENTS THAT WERE FOUND ARE SHOWN HEREON.

REFERENCES

- R1 = TRACT NO. 14541, M.M. 685/26-34
- R2 = TRACT NO. 13704, M.M. 638/39-44
- R3 = TRACT NO. 17491, M.M. 915/9-22
- R4 = TRACT NO. 14792, M.M. 713/12-18
- R5 = TRACT NO. 17803, M.M. 941/31-35
- R6 = TRACT NO. 15753, M.M. 793/9-15
- R7 = TRACT NO. 13343, M.M. 647/23-32
- R8 = TRACT NO. 14754, M.M. 713/3-11
- R10 = PARCEL MAP NO. 79-132, P.M.B. 143/11-16
- R11 = PARCEL MAP, P.M.B. 112/17-25
- R12 = PARCEL MAP NO. 87-243, P.M.B. 230/5-8
- R13 = PARCEL MAP NO. 84-629, P.M.B. 205/1-10
- R20 = RECORD OF SURVEY NO. 97-1038, R.S.B. 171/1-49
- R21 = RECORD OF SURVEY NO. 2012-1066, R.S.B. 261/11-14
- R22 = RECORD OF SURVEY NO. 2012-1067, R.S.B. 261/16
- R23 = RECORD OF SURVEY NO. 2000-1015, R.S.B. 180/33
- R24 = RECORD OF SURVEY, R.S.B. 68/10
- R25 = RECORD OF SURVEY NO. 94-1032, R.S.B. 151/42-45
- R26 = RECORD OF SURVEY NO. 89-1004, R.S.B. 130/1-10
- R27 = RECORD OF SURVEY NO. 2010-1137, R.S.B. 249/15-17
- R30 = CORNER RECORD 2001-1675
- R31 = CORNER RECORD 2009-2449
- R32 = CORNER RECORD 0546
- R40 = DEED, 210/218 OF DEEDS. RECORDED APRIL 30, 1887
- R41 = DEED, 2567/100 O.R. RECORDED AUGUST 27, 1953
- R42 = DEED, 5598/163 O.R. RECORDED JANUARY 20, 1961
- R43 = DEED, 2010000579763, O.R. RECORDED NOVEMBER 2, 2010

LEGEND

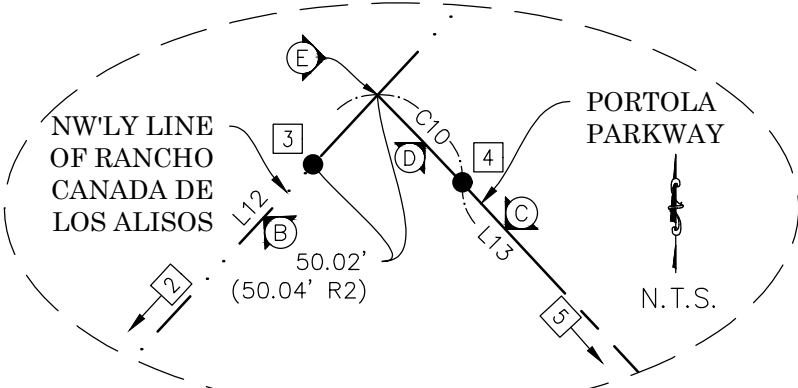
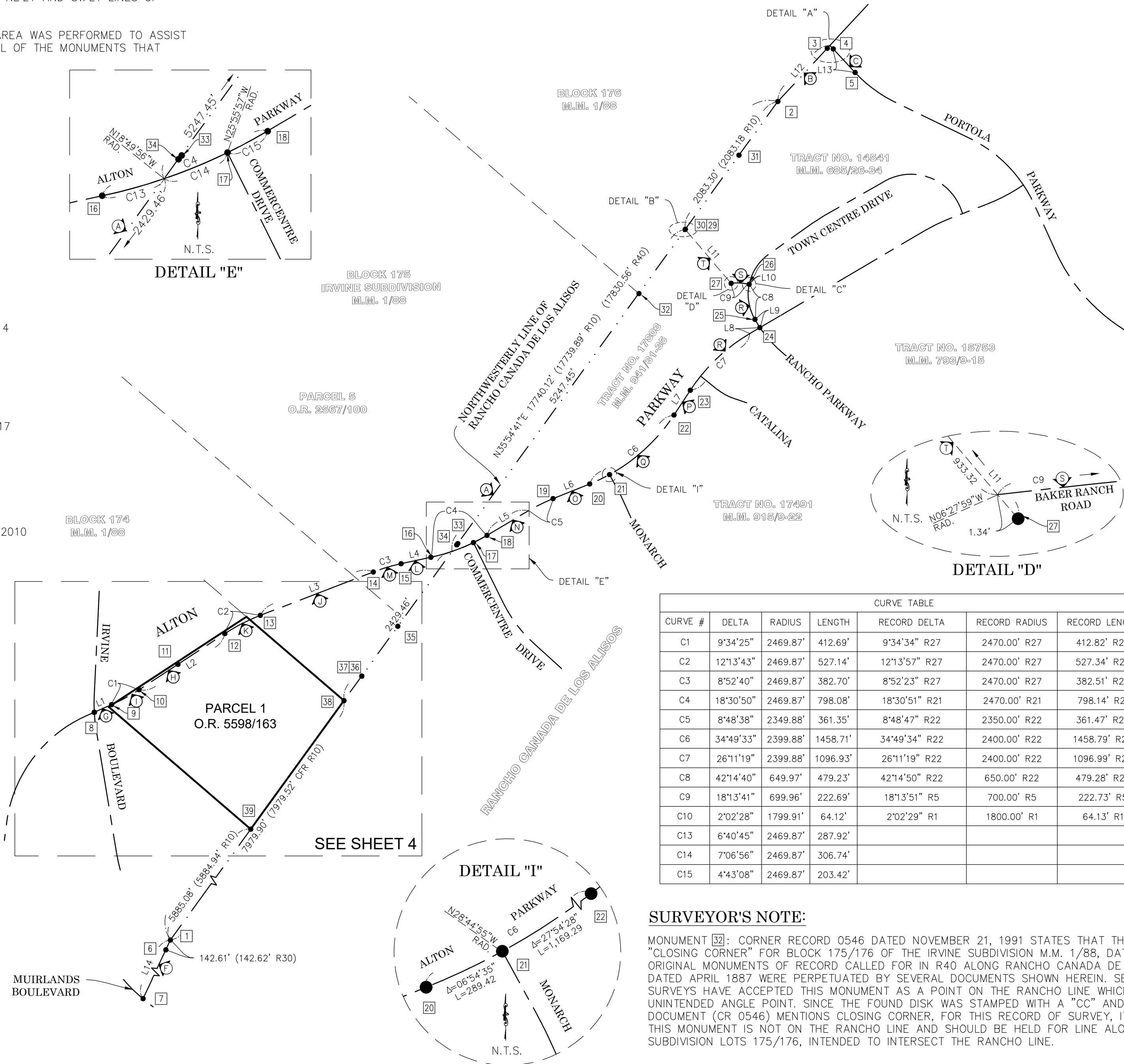
- FOUND MONUMENT AS NOTED
- CFR CALC FROM RECORD MAP
- R RECORD MAP



RECORD OF SURVEY NO. 2023-1128

IN THE CITIES OF IRVINE, LAKE FOREST AND IN THE UNINCORPORATED TERRITORY OF THE COUNTY OF ORANGE, CALIFORNIA

COUNTY OF ORANGE PUBLIC WORKS- SURVEY FIELD UNIT MICHAEL KUBISTY, PLS 8036
DATE OF SURVEY: SEPTEMBER 2019



NOTES

SEE SHEET 1 FOR STATEMENT OF PURPOSE, BASIS OF BEARINGS, AND DATUM STATEMENT.
SEE SHEET 2 FOR MONUMENT AND ESTABLISHMENT NOTES.
SEE SHEET 2 FOR TIE DISTANCES ALONG RANCHO CANADA DE LOS ALISOS FOR MONUMENTS
31, 32, 33, 34, 35, 36, 37 AND FOR TIE DISTANCES ALONG NE'LY AND SW'LY LINES OF
PARCEL 1 OF R42 FOR MONUMENTS 42, 44, & 45

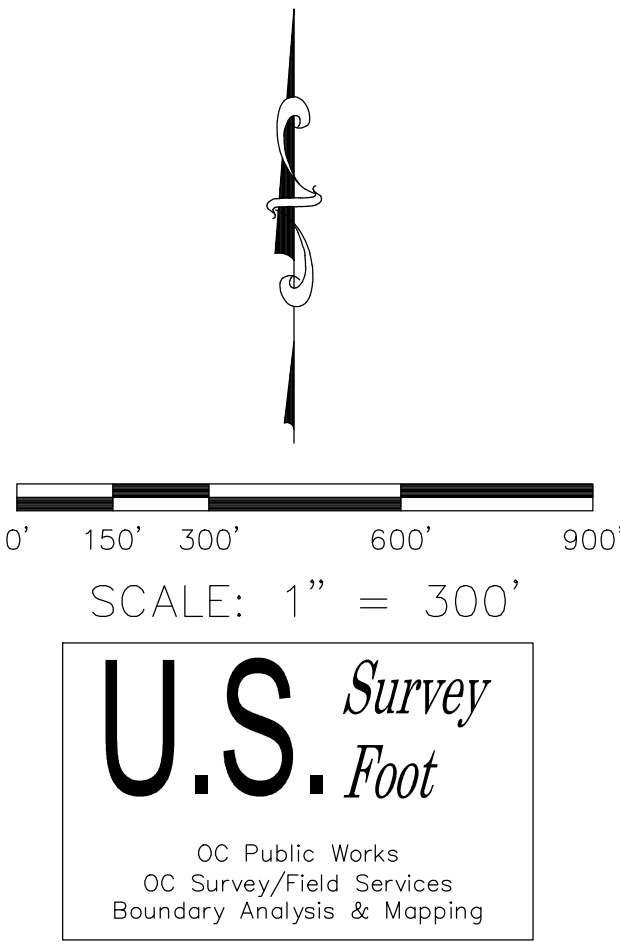
A DILIGENT SEARCH FOR ALL RECORD MONUMENTS IN THE AREA WAS PERFORMED TO
ASSIST IN ESTABLISHING THE BOUNDARY LINES OF THIS SURVEY. ALL OF THE MONUMENTS
THAT WERE FOUND ARE SHOWN HEREON.

REFERENCES

- R1 = TRACT NO. 14541, M.M. 685/26-34
R2 = TRACT NO. 13704, M.M. 638/39-44
R3 = TRACT NO. 17491, M.M. 915/9-22
R4 = TRACT NO. 14792, M.M. 713/12-18
R5 = TRACT NO. 17803, M.M. 941/31-35
R6 = TRACT NO. 15753, M.M. 793/9-15
R7 = TRACT NO. 13343, M.M. 647/23-32
R8 = TRACT NO. 14754, M.M. 713/3-11
R10 = PARCEL MAP NO. 79-132, P.M.B. 143/11-16
R11 = PARCEL MAP, P.M.B. 112/17-25
R12 = PARCEL MAP NO. 87-243, P.M.B. 230/5-8
R13 = PARCEL MAP NO. 84-629, P.M.B. 205/1-10
R20 = RECORD OF SURVEY NO. 97-1038, R.S.B. 171/1-49
R21 = RECORD OF SURVEY NO. 2012-1066, R.S.B. 261/11-14
R22 = RECORD OF SURVEY NO. 2012-1067, R.S.B. 261/16
R23 = RECORD OF SURVEY NO. 2000-1015, R.S.B. 180/33
R24 = RECORD OF SURVEY, R.S.B. 68/10
R25 = RECORD OF SURVEY NO. 94-1032, R.S.B. 151/42-45
R26 = RECORD OF SURVEY NO. 89-1004, R.S.B. 130/1-10
R27 = RECORD OF SURVEY NO. 2010-1137, R.S.B. 249/15-17
R30 = CORNER RECORD 2001-1675
R31 = CORNER RECORD 2009-2449
R32 = CORNER RECORD 0546
R40 = DEED, 210/218 OF DEEDS RECORDED APRIL 30, 1887
R41 = DEED, 2567/100 O.R. RECORDED AUGUST 27, 1953
R42 = DEED, 5598/163 O.R. RECORDED JANUARY 20, 1961
R43 = DEED, 2010000579763, O.R. RECORDED NOVEMBER 2, 2010

LEGEND

- FOUND MONUMENT AS NOTED
○ SET MONUMENT AS NOTED
CFR CALC FROM RECORD MAP
R RECORD MAP
M MEASURED



RECORD OF SURVEY NO. 2023-1128

IN THE CITIES OF IRVINE, LAKE FOREST AND IN THE UNINCORPORATED
TERRITORY OF THE COUNTY OF ORANGE, CALIFORNIA

COUNTY OF ORANGE PUBLIC WORKS- SURVEY FIELD UNIT MICHAEL KUBISTY, PLS 8036
DATE OF SURVEY: SEPTEMBER 2019

