

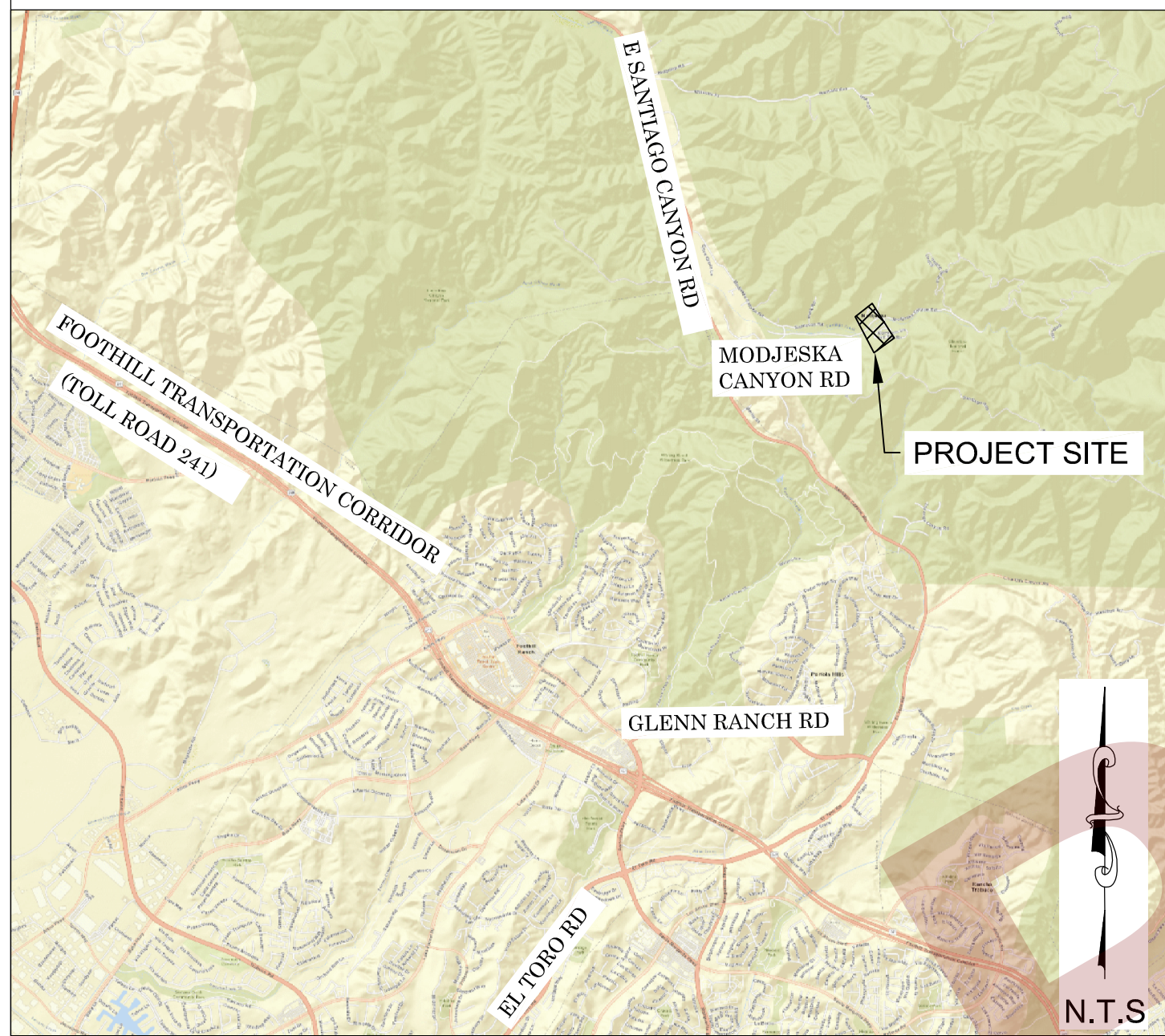


OC PUBLIC WORKS DEPARTMENT
SHANE SILSBY, DIRECTOR
KEVIN HILLS, COUNTY SURVEYOR
MODJESKA HISTORIC HOUSE



ESTABLISHING PL FOR LOTS 533 & 452

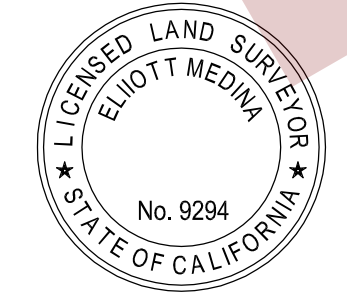
LOCATION MAP



SENIOR LAND SURVEYOR'S CERTIFICATE:

THIS MAP CORRECTLY REPRESENTS A SURVEY MADE BY ME OR UNDER MY DIRECTION IN CONFORMANCE WITH REQUIREMENTS OF THE PROFESSIONAL LAND SURVEYOR'S ACT; THIS 13TH DAY OF AUGUST, 2019.

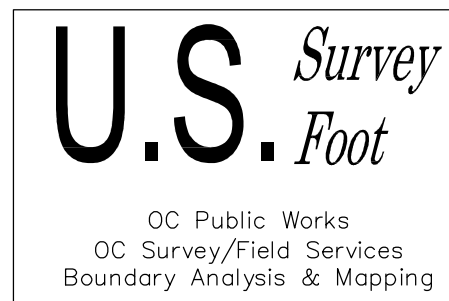
ELLIOTT MEDINA, PLS SENIOR LAND SURVEYOR



DEPUTY COUNTY SURVEYOR'S STATEMENT:

THIS MAP HAS BEEN EXAMINED IN ACCORDANCE WITH THE PROFESSIONAL LAND SURVEYOR'S ACT; THIS 13TH DAY OF AUGUST, 2019.

WADE WEAVER, PLS DEPUTY COUNTY SURVEYOR



BASIS OF BEARINGS

THE BASIS OF BEARINGS FOR THIS SURVEY IS BASED ON THE CALIFORNIA COORDINATE SYSTEM (CCS83), ZONE VI, NAD 83, O.C.S. 2017.50 EPOCH ADJUSTMENT, AS DETERMINED LOCALLY BY A LINE BETWEEN CONTINUOUS GLOBAL POSITIONING STATIONS (WHYT) AND (MJPK) BEING NORTH 63°30'51\"/>

HORIZONTAL DATUM

COORDINATES SHOWN ARE BASED ON THE CALIFORNIA COORDINATE SYSTEM (CCS83), ZONE VI, NAD 83, O.C.S. 2017.50 EPOCH ADJUSTMENT.
ALL DISTANCES SHOWN ARE GRID, UNLESS OTHERWISE NOTED. TO OBTAIN GROUND DISTANCES DIVIDE GRID BY 0.99991663.
ALL DISTANCES ARE BASED ON THE U.S. SURVEY FOOT.

VERTICAL DATUM

O.C.S. BM. 3UU-2-89 ELEV. = 1337.157' YEAR LEVELED: 1989
NAVD 1988 (O.C.S. 1995 ADJUSTMENT)
DESCRIBED BY O.C.S. 2003 - FOUND 3 3/4\"/>

NOTES

THE SURVEY INFORMATION SHOWN HEREON IS TO BE USED FOR TOPOGRAPHIC RELATIONSHIPS ONLY AND IS NOT INTENDED FOR LAND ACQUISITION OR BOUNDARY PURPOSES.

SHEET INDEX

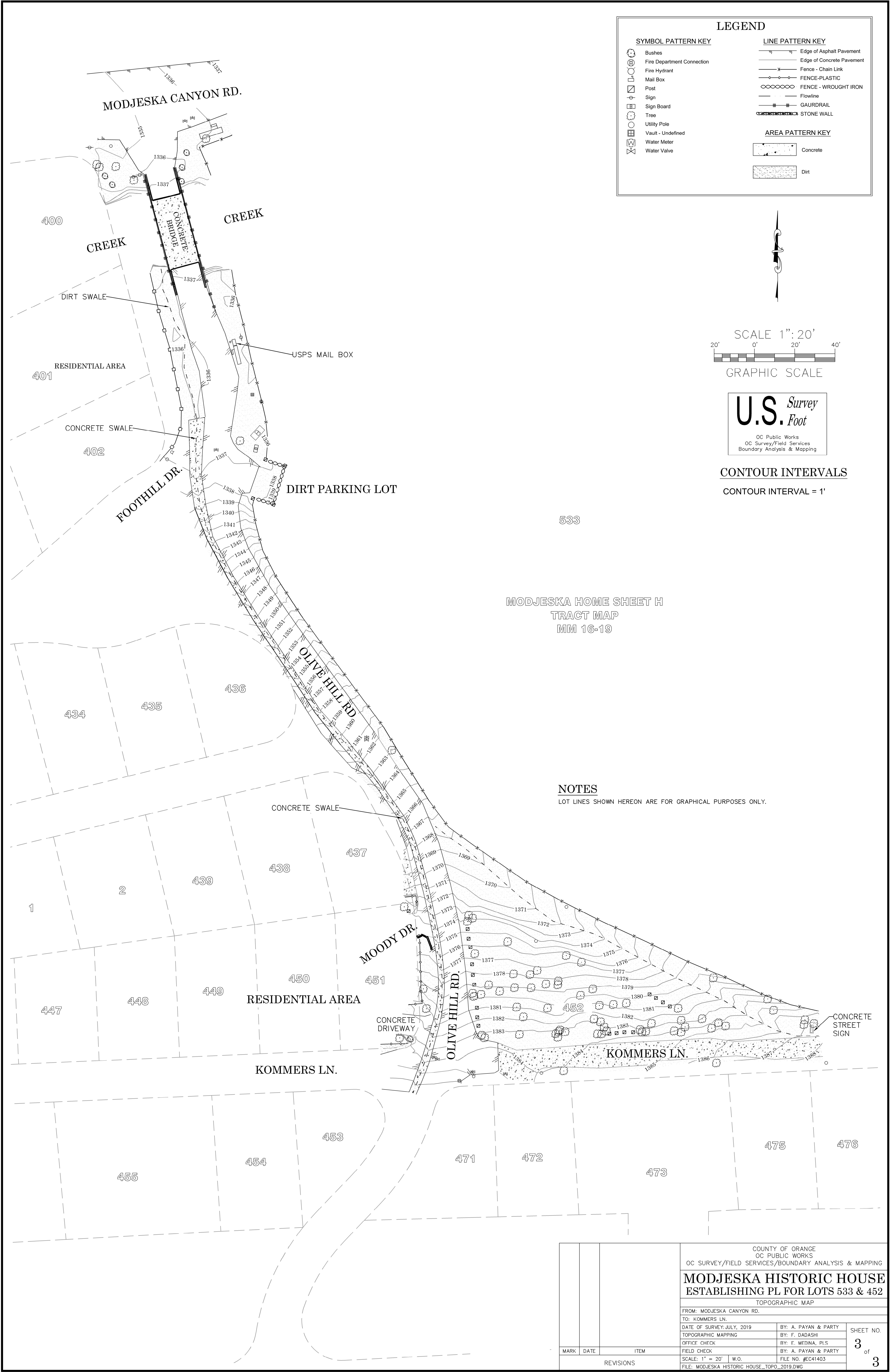
SHEET	NO.	DESCRIPTION
SHEET 1	1	TITLE SHEET
SHEET 2	2	BOUNDARY (IN PROGRESS)
SHEETS 3	3	TOPOGRAPHIC MAP

PURPOSE OF SURVEY

THE PURPOSE OF THE SURVEY IS TO ESTABLISH THE PROPERTY LINE FOR LOT 452 AND THE SOUTHWESTERLY PROPERTY LINE OF LOT 533.

TOPOGRAPHIC MAPPING PROJECT

		COUNTY OF ORANGE OC PUBLIC WORKS OC SURVEY/FIELD SERVICES/BOUNDARY ANALYSIS & MAPPING	
		MODJESKA HISTORIC HOUSE ESTABLISHING PL FOR LOTS 533 & 452	
		TITLE SHEET	
		FROM: MODJESKA CANYON RD.	
		TO: KOMMERS LN.	
		DATE OF SURVEY: JULY, 2019	BY: A. PAYAN & PARTY
		TOPOGRAPHIC MAPPING	BY: F. DADASHI
		OFFICE CHECK	BY: E. MEDINA, PLS
		FIELD CHECK	BY: A. PAYAN & PARTY
		SCALE: 1" = 20'	W.O.
		FILE NO. #EC41403	
		FILE: MODJESKA HISTORIC HOUSE_TOPO_2019.DWG	
MARK	DATE	ITEM	
REVISIONS			
			SHEET NO. 1 of 3



SYMBOL PATTERN KEY

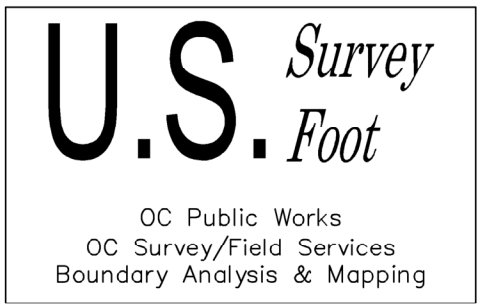
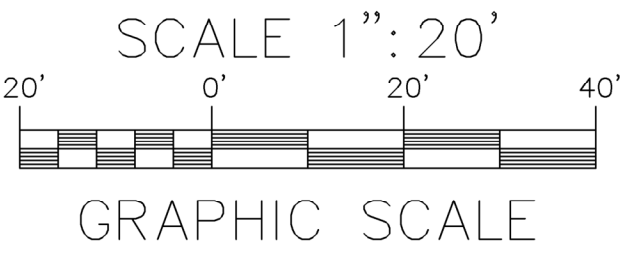
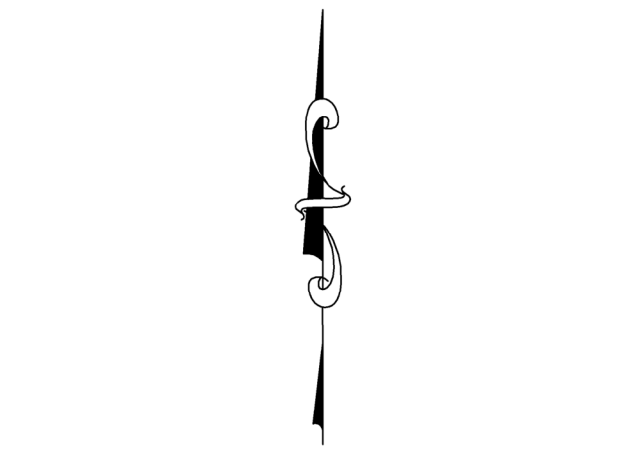
- Bushes
- Fire Department Connection
- Fire Hydrant
- Mail Box
- Post
- Sign
- Sign Board
- Tree
- Utility Pole
- Vault - Undefined
- Water Meter
- Water Valve

LINE PATTERN KEY

- Edge of Asphalt Pavement
- Edge of Concrete Pavement
- Fence - Chain Link
- Fence - PLASTIC
- FENCE - WROUGHT IRON
- Flowline
- GAUDDRAIL
- STONE WALL

AREA PATTERN KEY

- Concrete
- Dirt



CONTOUR INTERVALS
CONTOUR INTERVAL = 1'

NOTES
LOT LINES SHOWN HEREON ARE FOR GRAPHICAL PURPOSES ONLY.

			COUNTY OF ORANGE OC PUBLIC WORKS OC SURVEY/FIELD SERVICES/BOUNDARY ANALYSIS & MAPPING			
MODJESKA HISTORIC HOUSE ESTABLISHING PL FOR LOTS 533 & 452						
TOPOGRAPHIC MAP						
FROM: MODJESKA CANYON RD.						
TO: KOMMERS LN.						
DATE OF SURVEY: JULY, 2019				BY: A. PAYAN & PARTY		SHEET NO. 3 of 3
TOPOGRAPHIC MAPPING				BY: F. DADASHI		
OFFICE CHECK				BY: E. MEDINA, PLS		
FIELD CHECK				BY: A. PAYAN & PARTY		
SCALE: 1" = 20'		W.O.		FILE NO. #EC41403		
FILE: MODJESKA HISTORIC HOUSE_TOPO_2019.DWG						
MARK	DATE	ITEM	REVISIONS			