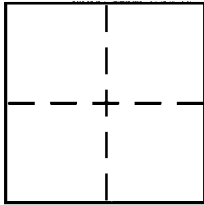


# CORNER RECORD

Document Number 2013-0253  
County of ORANGE, California

City of NEWPORT BEACH

Brief Legal Description MESA DRIVE & CYPRESS STREET



## CORNER TYPE

Government Corner ☐ Control ☐  
Meander ☐ Property ☐  
Rancho ☐ Other ☒  
Date of Survey 7-11-2012

## COORDINATES (Optional)

N. \_\_\_\_\_  
E. \_\_\_\_\_  
Zone \_\_\_\_\_ NAD27 ☐ NAD83 ☐  
NAD83 Epoch \_\_\_\_\_  
Elev. \_\_\_\_\_  
Vert. Datum: NGVD29 ☐ NAVD88 ☐  
Meas. Units: Metric ☐ Imperial ☐

Corner – Left as found ☒ Found and tagged ☐ Established ☐ Reestablished ☐ Rebuilt ☐

Identification and type of corner found: Evidence used to identify or procedure used to establish or reestablish the corner:

SEE PAGE 2

A description of the physical condition of the monument as found and as set or reset:

SEE PAGE 2

## SURVEYOR'S STATEMENT

This Corner Record was prepared by me or under my direction in conformance with  
the Land Surveyor's Act on JANUARY 3, 2013

Signed Ruel del Castillo P.L.S. or R.C.E. No. 4212

## COUNTY SURVEYOR'S STATEMENT

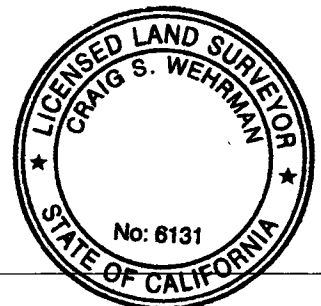
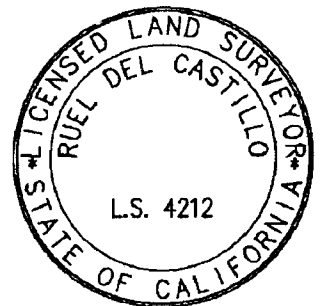
This Corner Record was received FEB 19 2013

and examined and filed MAR 18 2013

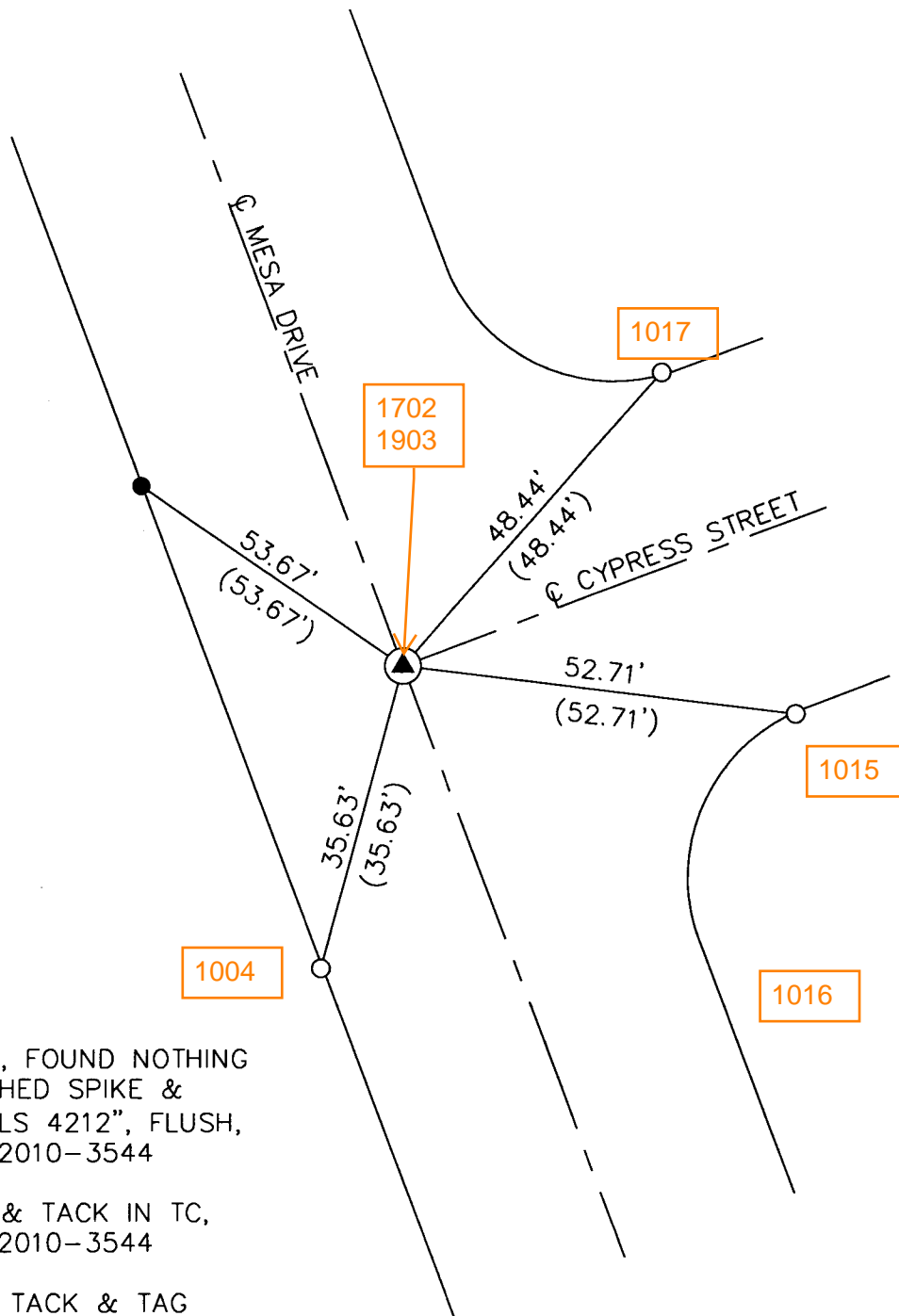
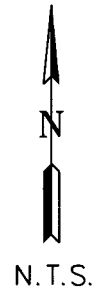
Signed Craig S. Wehrman P.L.S. or R.C.E. No. 6131

Title Chief Deputy Surveyor

County Surveyor's Comment \_\_\_\_\_



## MESA DRIVE &amp; CYPRESS STREET



## LEGEND:

- SEARCHED, FOUND NOTHING SET PUNCHED SPIKE & WASHER "LS 4212", FLUSH, PER C.R. 2010-3544
- FD. LEAD & TACK IN TC, PER C.R. 2010-3544
- FD. LEAD, TACK & TAG "LS 4212 TIE" IN TC, PER C.R. 2010-3544.
- RECORD PER C.R. 2010-3544

NOTE: THESE TIES ARE FOR THE PURPOSE OF PERPETUATING THE FOUND MONUMENTATION. NO CLAIM IS MADE AS TO THE RELATIONSHIP OF THE POINTS OR LINES SHOWN HEREON TO THE TRUE BOUNDARY LOCATIONS.