

# CORNER RECORD

Agency Index

Document Number

**2022-3576**

City of UNINCORPORATED TERRITORY

County of ORANGE, California

Brief Legal Description INTERSECTION OF ANTONIO PKWY AND MEANDERING TRAIL

## CORNER TYPE


Government Corner ☐ Control ☒  
Meander ☐ Property ☐  
Rancho ☐ Other ☐

Date of Survey DECEMBER 2022

## COORDINATES (Optional)

N. \_\_\_\_\_ E. \_\_\_\_\_  
Elevation \_\_\_\_\_  
Units Metric ☐ U.S. Survey Foot ☒  
Horizontal Datum \_\_\_\_\_  
Zone \_\_\_\_\_ Epoch Date \_\_\_\_\_  
Vertical Datum \_\_\_\_\_

☐ Complies with Public Resources Code §§8801-8819  
☐ Complies with Public Resources Code §§8890-8902

PLS Act Ref: ☐ 8765(d) ☒ 8771 ☐ 8773 ☐ Other:

Corner/  
Monument: ☒ Left as found ☐ Established ☐ Rebuilt ☐ Pre-Construction  
☐ Found and tagged ☐ Reestablished ☐ Referenced ☒ Post-Construction

Narrative of corner identified and monument as found, set, reset, replaced, or removed:

☒ NOTES:

THE PURPOSE OF THIS RECORD IS TO DOCUMENT THE PERPETUATION OF FOUND MONUMENT(S) PURSUANT TO THE PLS ACT SECTION 8771. NO CLAIM IS MADE AS TO THE RELATIONSHIP OF THE POINTS SHOWN HEREON TO TRUE BOUNDARY LOCATIONS.

- BEARINGS SHOWN HEREON ARE ASSUMED AND ARE DISPLAYED FOR ANGULAR RELATIONSHIP ONLY.
- PARCEL/LOT LINES AND PARCEL/LOT NUMBERS ARE SHOWN HEREON FOR GRAPHICAL REPRESENTATION ONLY.
- MEASURED DISTANCES SHOWN HEREON ARE GRID DISTANCES, DERIVED BY INVERSE FROM POSITIONS ESTABLISHED BY A FULLY REDUNDANT LEAST SQUARES NETWORK ADJUSTMENT. ALL POINTS WERE EITHER TRAVERSED THROUGH OR DOUBLE DETERMINED, PER CHAPTERS 5 & 11 OF THE OC SURVEY STANDARDS MANUAL. TO OBTAIN A GROUND DISTANCE DIVIDE GRID DISTANCE BY 0.999944.
- RECORD DISTANCES SHOWN HEREON ARE AS THEY APPEAR ON THE DOCUMENT OF RECORD. DISTANCES MAY BE EITHER GRID OR GROUND, AS PER SAID RECORD.

## SURVEYOR'S STATEMENT

This Corner Record was prepared by me or under my direction in conformance with the Professional Land Surveyors' Act on DECEMBER 12, 2022

Signed [Signature] (P.L.S.) or R.C.E. No. 7172



## COUNTY SURVEYOR'S STATEMENT

This Corner Record was received \_\_\_\_\_

and examined and filed \_\_\_\_\_

Signed \_\_\_\_\_ P.L.S. or R.C.E. No. \_\_\_\_\_

Title \_\_\_\_\_

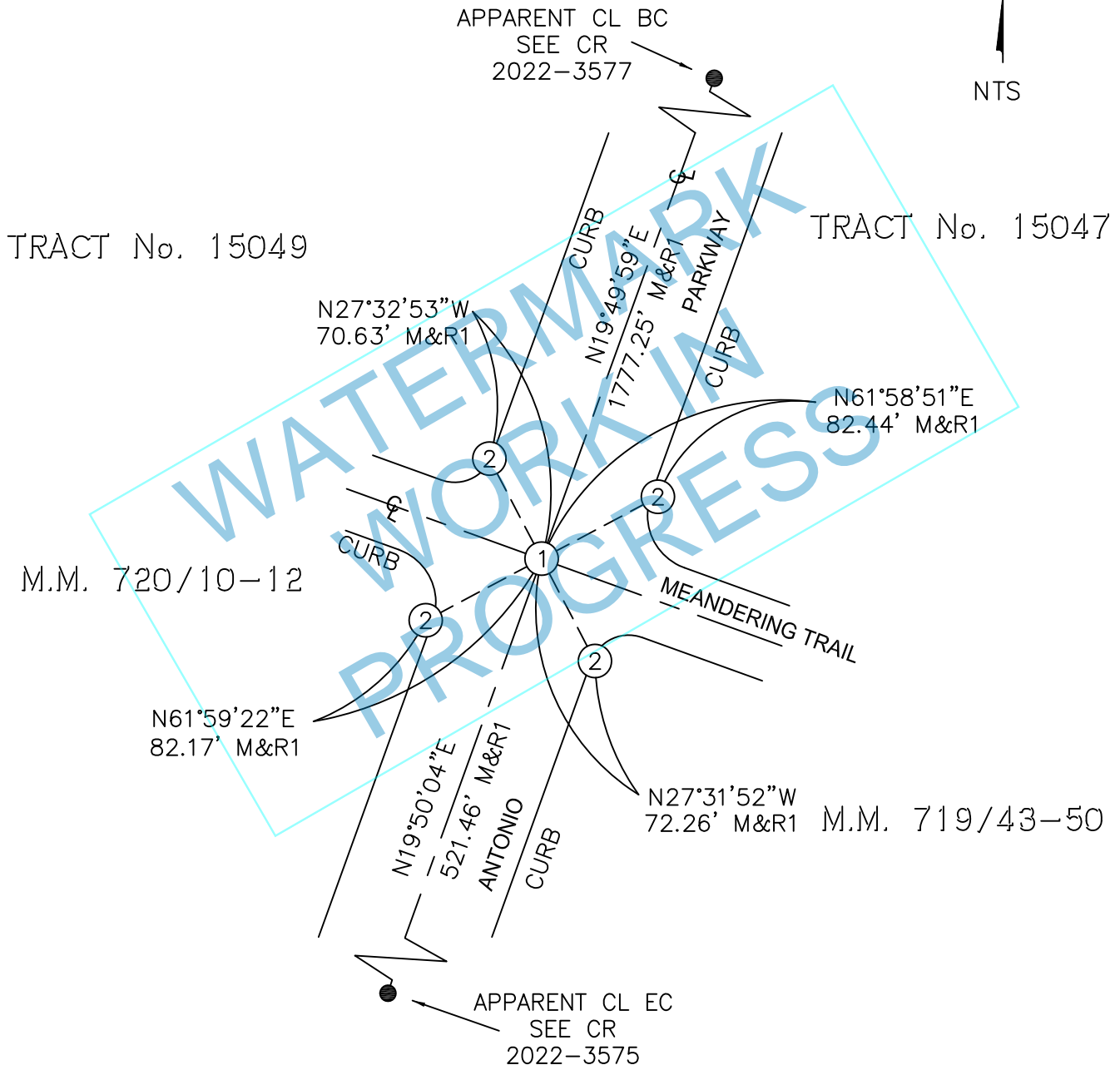
County Surveyor's Comment \_\_\_\_\_

\_\_\_\_\_  
\_\_\_\_\_  
\_\_\_\_\_

RECORD REFERENCES:

R1 = C.R. 2021-1610

M = MEASURED

POST-CONSTRUCTION  
CORNER RECORDMONUMENT NOTES:

- ① FOUND 2" BRASS CAP STAMPED "LS 5557" PER R1, DOWN 1.3' IN WELL. NOTE, WAS MISTAKENLY NOTED AS "PLS 5557" ON PRE-CONSTRUCTION CORNER RECORD.
- ② FOUND LEAD, TACK AND TAG STAMPED "TIE PLS 7172", PER R1. NOTE, WAS MISTAKENLY NOTED AS "TIE PT PLS 7172" ON PRE-CONSTRUCTION CORNER RECORD.