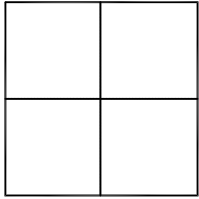


CORNER RECORD

Agency Index

2021PW-CM0006 (EQ20550)

Document Number

2021-1608City of UNINCORPORATED TERRITORYCounty of ORANGE, CaliforniaBrief Legal Description ALONG ANTONIO PKWY: AT THE APP. INT. OF OAKTREE, AND AT THE APP. CL BC APPROX. 131' NE'LY OF SAID INT.**CORNER TYPE**

Government Corner ☐ Control ☒
Meander ☐ Property ☐
Rancho ☐ Other ☐

Date of Survey April, 2021**COORDINATES (Optional)**

N. _____ E. _____
Elevation _____
Units Metric ☐ U.S. Survey Foot ☒
Horizontal Datum _____
Zone _____ Epoch Date _____
Vertical Datum _____

☐ Complies with Public Resources Code §§8801-8819☐ Complies with Public Resources Code §§8890-8902PLS Act Ref: ☐ 8765(d) ☒ 8771 ☐ 8773 ☐ Other:

Corner/Monument: ☒ Left as found ☐ Established ☐ Rebuilt ☒ Pre-Construction
☐ Found and tagged ☐ Reestablished ☐ Referenced ☐ Post-Construction

Narrative of corner identified and monument as found, set, reset, replaced, or removed:

☒ NOTES:

THE PURPOSE OF THIS RECORD IS TO DOCUMENT THE PERPETUATION OF FOUND MONUMENT(S) PURSUANT TO THE PLS ACT SECTION 8771. NO CLAIM IS MADE AS TO THE RELATIONSHIP OF THE POINTS SHOWN HEREON TO TRUE BOUNDARY LOCATIONS.

- BEARINGS SHOWN HEREON ARE ASSUMED AND ARE DISPLAYED FOR ANGULAR RELATIONSHIP ONLY.
- PARCEL/LOT LINES AND PARCEL/LOT NUMBERS ARE SHOWN HEREON FOR GRAPHICAL REPRESENTATION ONLY.
- MEASURED DISTANCES SHOWN HEREON ARE GRID DISTANCES, DERIVED BY INVERSE FROM POSITIONS ESTABLISHED BY A FULLY REDUNDANT LEAST SQUARES NETWORK ADJUSTMENT. ALL POINTS WERE EITHER TRAVERSED THROUGH OR DOUBLE DETERMINED, PER CHAPTERS 5 & 11 OF THE OC SURVEY STANDARDS MANUAL. TO OBTAIN A GROUND DISTANCE DIVIDE GRID DISTANCE BY 0.999944.
- RECORD DISTANCES SHOWN HEREON ARE AS THEY APPEAR ON THE DOCUMENT OF RECORD. DISTANCES MAY BE EITHER GRID OR GROUND, AS PER SAID RECORD.

SURVEYOR'S STATEMENT

This Corner Record was prepared by me or under my direction in conformance with the Professional Land Surveyors' Act on October 28, 2021

Signed [Signature] (P.L.S.) or R.C.E. No. 7172**COUNTY SURVEYOR'S STATEMENT**This Corner Record was received OCTOBER 28, 2021and examined and filed JANUARY 10, 2022Signed [Signature] P.L.S. or R.C.E. No. 6617Title COUNTY SURVEYOR

County Surveyor's Comment _____

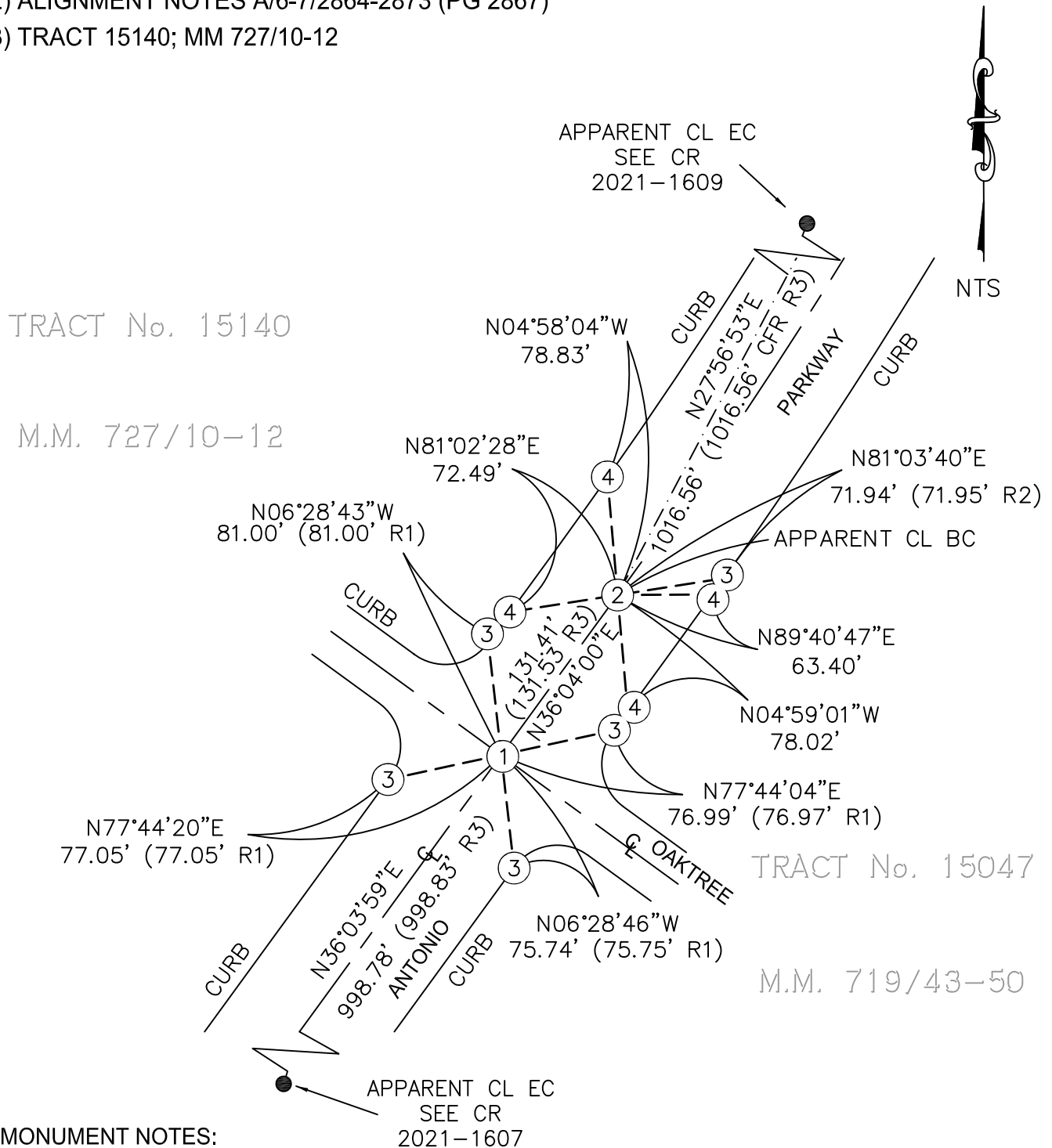
RECORD REFERENCES:

(R1) CORNER RECORD 1998-0174

(R2) ALIGNMENT NOTES A/6-7/2864-2873 (PG 2867)

(R3) TRACT 15140; MM 727/10-12

PRE-CONSTRUCTION CORNER RECORD



MONUMENT NOTES:

- ① FOUND SPIKE AND WASHER STAMPED "PLS 5557", PER R1, DOWN 0.5' IN AC.
- ② FOUND 2 INCH IRON PIPE WITH BRASS TACK AND TAG STAMPED "PLS 5557", DOWN 0.05' IN DIRT, IN LIEU OF SPIKE AND WASHER STAMPED "PLS 5557", PER R3
- ③ FOUND LEAD AND BRASS PIN IN CURB PER R1 AND R2; REPLACED WITH LEAD, TACK AND TAG STAMPED "TIE PT PLS 7172".
- ④ FOUND LEAD AND BRASS PIN IN CURB, NO RECORD; REPLACED WITH LEAD, TACK AND TAG STAMPED "TIE PT PLS 7172".