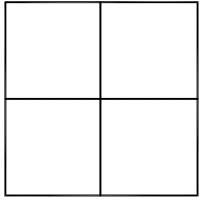


# CORNER RECORD

Agency Index

2021PW-CM0006 (EQ20550)

Document Number

**2021-1607**City of UNINCORPORATED TERRITORYCounty of ORANGE, CaliforniaBrief Legal Description ALONG ANTONIO PKWY: AT THE APPARENT CL EC APPROX. 377' NORTHERLY OF SWEETWATER**CORNER TYPE**

Government Corner ☐ Control ☒  
Meander ☐ Property ☐  
Rancho ☐ Other ☐

Date of Survey April, 2021**COORDINATES (Optional)**

N. \_\_\_\_\_ E. \_\_\_\_\_  
Elevation \_\_\_\_\_  
Units Metric ☐ U.S. Survey Foot ☒  
Horizontal Datum \_\_\_\_\_  
Zone \_\_\_\_\_ Epoch Date \_\_\_\_\_  
Vertical Datum \_\_\_\_\_

☐ Complies with Public Resources Code §§8801-8819☐ Complies with Public Resources Code §§8890-8902PLS Act Ref: ☐ 8765(d) ☒ 8771 ☐ 8773 ☐ Other:

Corner/  
Monument: ☒ Left as found ☐ Established ☐ Rebuilt ☒ Pre-Construction  
☐ Found and tagged ☐ Reestablished ☐ Referenced ☐ Post-Construction

Narrative of corner identified and monument as found, set, reset, replaced, or removed:

☒ NOTES:

THE PURPOSE OF THIS RECORD IS TO DOCUMENT THE PERPETUATION OF FOUND MONUMENT(S) PURSUANT TO THE PLS ACT SECTION 8771. NO CLAIM IS MADE AS TO THE RELATIONSHIP OF THE POINTS SHOWN HEREON TO TRUE BOUNDARY LOCATIONS.

- BEARINGS SHOWN HEREON ARE ASSUMED AND ARE DISPLAYED FOR ANGULAR RELATIONSHIP ONLY.
- PARCEL/LOT LINES AND PARCEL/LOT NUMBERS ARE SHOWN HEREON FOR GRAPHICAL REPRESENTATION ONLY.
- MEASURED DISTANCES SHOWN HEREON ARE GRID DISTANCES, DERIVED BY INVERSE FROM POSITIONS ESTABLISHED BY A FULLY REDUNDANT LEAST SQUARES NETWORK ADJUSTMENT. ALL POINTS WERE EITHER TRAVERSED THROUGH OR DOUBLE DETERMINED, PER CHAPTERS 5 & 11 OF THE OC SURVEY STANDARDS MANUAL. TO OBTAIN A GROUND DISTANCE DIVIDE GRID DISTANCE BY 0.999944.
- RECORD DISTANCES SHOWN HEREON ARE AS THEY APPEAR ON THE DOCUMENT OF RECORD. DISTANCES MAY BE EITHER GRID OR GROUND, AS PER SAID RECORD.

**SURVEYOR'S STATEMENT**

This Corner Record was prepared by me or under my direction in conformance with  
the Professional Land Surveyors' Act on October 28, 2021

Signed [Signature] (P.L.S.) or R.C.E. No. 7172**COUNTY SURVEYOR'S STATEMENT**This Corner Record was received OCTOBER 28, 2021and examined and filed JANUARY 10, 2022Signed [Signature: Kevin R. Hills] P.L.S. or R.C.E. No. 6617Title COUNTY SURVEYOR

County Surveyor's Comment \_\_\_\_\_

RECORD REFERENCES:

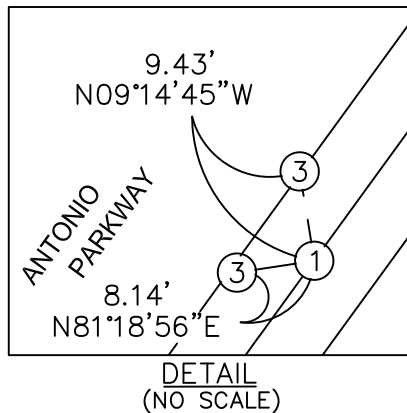
(R1) ALIGNMENT NOTES A/6-7/2864-2873 (PG 2866)

(R2) TRACT 15140; M.M 727/10-12

CFR=CALCULATED FROM RECORD

PRE-CONSTRUCTION  
CORNER RECORD

NTS



TRACT No. 15140

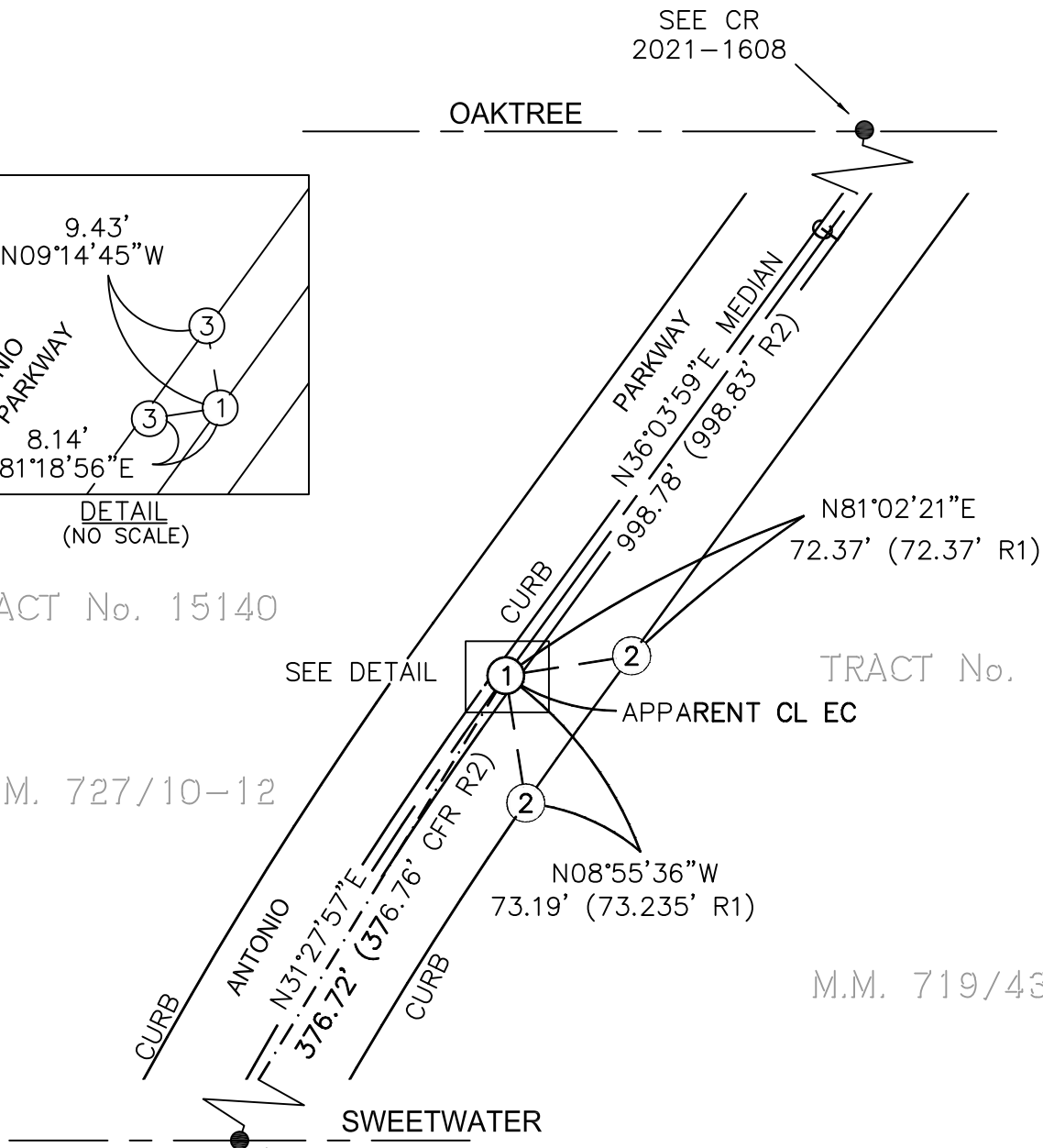
M.M. 727/10-12

SEE DETAIL

TRACT No. 15047

APPARENT CL EC

M.M. 719/43-50

MONUMENT NOTES:

- ① FOUND 2 INCH IRON PIPE WITH BRASS TACK AND TAG STAMPED "PLS 5557", PER R2, DOWN 0.5' IN DIRT.
- ② FOUND LEAD AND BRASS PIN IN CURB PER R1; REPLACED WITH LEAD, TACK AND TAG STAMPED "TIE PT PLS 7172".
- ③ FOUND LEAD AND BRASS PIN IN CURB, NO RECORD; REPLACED WITH LEAD, TACK AND TAG STAMPED "TIE PT PLS 7172".