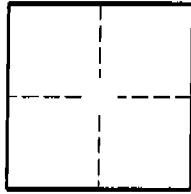


CORNER RECORD

Document Number 2001-1140

City of UNINCORPERATED County of ORANGE, California

Brief Legal Description CENTERLINE TIE NOTES FOR TRACT 15593



CORNER TYPE

Government Corner ☐ Control ☐
Meander ☐ Property ☒
Rancho ☐ Other ☐
Date of Survey JUNE 6, 2001

COORDINATES (OPTIONAL)

N. _____
E. _____
Zone _____ NAD27 ☐ NAD83 ☐
NAD83 Epoch _____
Elev. _____
Vert. Datum: NGVD29 ☐ NAVD88 ☐
Meas. Units: Metric ☐ Imperial ☐

Corner- Left as found ☐ Found and tagged ☐ Established ☒ Reestablished ☐ Rebuilt ☐

Identification and type of corner found; Evidence used to identify or procedure used to establish or reestablish the corner:
A PORTION OF THE CENTERLINE TIE NOTE'S FOR THE ABOVE MENTIONED TRACT

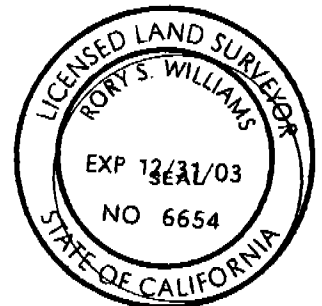
ACANTHUS

A description of the physical condition of the monument as found and as set or reset: _____

SURVEYOR'S STATEMENT

This Corner Record was prepared by me or under my direction in conformance with
the Land Surveyors' Act on JUNE 6, 2001

Signed Rory S. Williams P.L.S. or R.C.E. Number L.S. 6654



COUNTY SURVEYOR'S STATEMENT

This Corner Record was received JUL 09 2001
and examined and filed July 17th 2001

Signed Robert Jelinek P.L.S. or R.C.E. Number 6803

Title DEPUTY COUNTY SURVEYOR



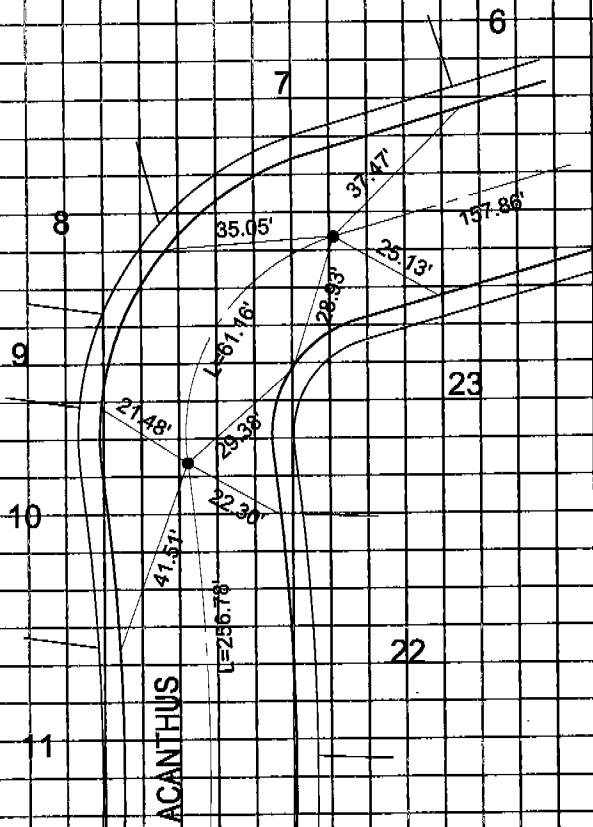
County Surveyor's Comment _____

CR 2001-1140

MONUMENT NOTES

• SET SPIKE & WASHER
STAMPED L.S. 6654,
UNLESS OTHERWISE NOTED.

ALL TIE POINTS ARE LEAD &
TACK TAGGED L.S. 6654 IN
TOP OF CURB.



SCALE: 1" = 40'

