

BLOCK: 5158 MODULE: 82
CORNER RECORD

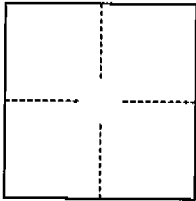
WM40E

Document Number 2000-242

City of UNINCORPORATED

County of ORANGE, California

Brief Legal Description CENTERLINE TIE NOTES FOR TRACT 15537, MM T64/33-36



CORNER TYPE

Government Corner ☐ Control ☐
Meander ☐ Property ☒
Rancho ☐ Other ☐ Zone _____
Date of Survey 1/6/00

COORDINATES

(Optional)

N. _____
E. _____
Datum _____
Elev. _____

Corner — Left as found ☐ Found and tagged ☐ Established ☒ Reestablished ☐ Rebuilt ☐

Identification and type of corner found: Evidence used to identify or procedure used to establish or reestablish the corner:
A PORTION OF CENTERLINE TIE NOTE'S FOR THE ABOVE MENTIONED TRACT

A description of the physical condition of the monument as found and as set or reset: _____

SURVEYOR'S STATEMENT

This Corner Record was prepared by me or under my direction in conformance with the
Land Surveyors' Act on JANUARY 6, 2000.

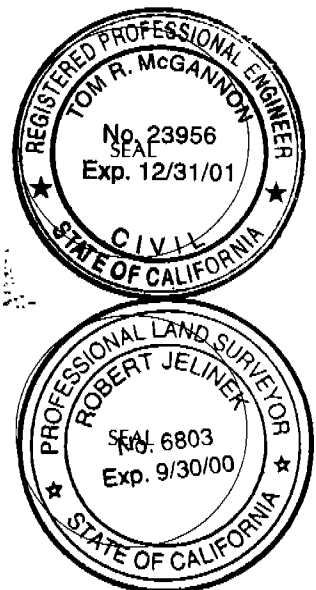
Signed Tom R. Mc Mannen R.C.E. Number 23956

COUNTY SURVEYOR'S STATEMENT

This Corner Record was received 6/15/2000 and examined
and filed July 5th 2000

Signed Robert Jelinek Title DEPUTY COUNTY SURVEYOR

County Surveyor's Comment _____



HUNSAKER & ASSOCIATES, INC.
LAND SURVEYOR: TOM R. McGANNON, R.C.E. 23956

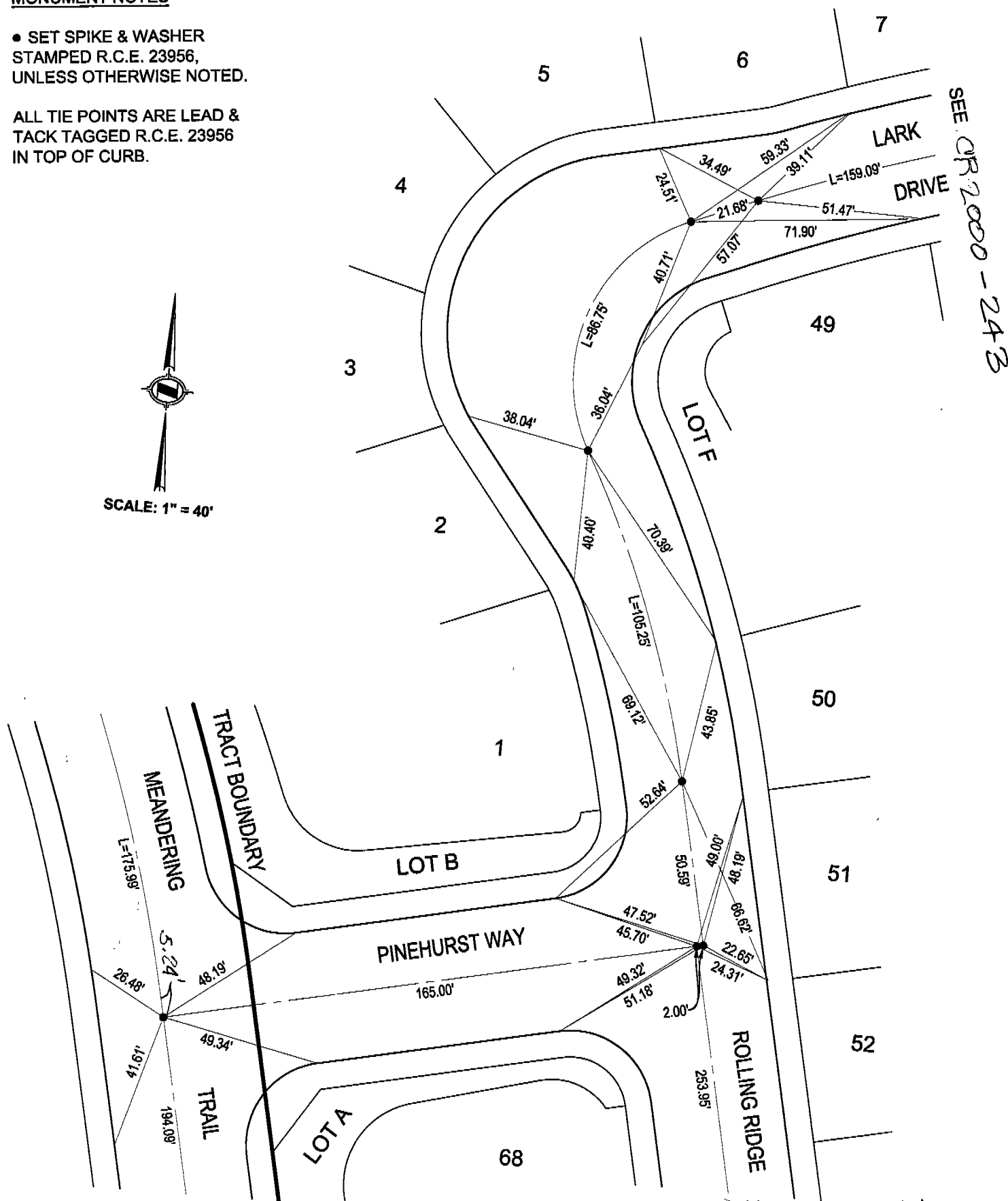
SHEET 2 OF 2 SHEETS
OTHER SHEETS ARE ON
SEPARATE CORNER RECORDS

● SET SPIKE & WASHER
STAMPED R.C.E. 23956,
UNLESS OTHERWISE NOTED.

ALL TIE POINTS ARE LEAD &
TACK TAGGED R.C.E. 23956
IN TOP OF CURB.



SCALE: 1" = 40'



SEE CR 2000-243

SEE CR 2000-246