

Block: 5158, Module: 92

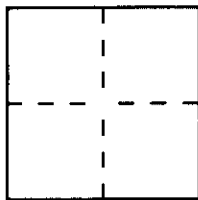
WM 40E

CORNER RECORD

Document Number 98-335

City of Upland County of Orange, California

Brief Legal Description TIES FOR TRACT NO. 15258



CORNER TYPE

Government Corner ☐ Control ☐
Meander ☐ Property ☐
Rancho ☐ Other ☒
Date of Survey April 10, 1998

COORDINATES
(Optional)

N _____
E _____
Zone _____ Datum _____
Elev _____

Corner — Left as found ☐ Found and tagged ☐ Established ☒ Reestablished ☐ Rebuilt ☐

Identification and type of corner found Evidence used to identify or procedure used to establish or reestablish the corner
SET SPIKE AND WASHER, L.S. 5314 AT THE CENTERLINE OF THE STREETS IN THIS TRACT.

A description of the physical condition of the monument as found and as set or reset _____

SURVEYOR'S STATEMENT

This Corner Record was prepared by me or under my direction in conformance with
the Land Surveyors' Act on May 13 19 98

Signed Robert N. Mum Mack L S or R G E-Number 5314

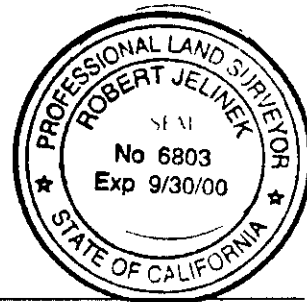


COUNTY SURVEYOR'S STATEMENT

This Corner Record was received 5-18 19 98 and examined

and filed July 20th 19 98 DEPUTY COUNTY SURVEYOR

Signed Robert Jelinek Title _____



County Surveyor's Comment _____

SURVEY OF _____ INDEX _____

WAGNER PACIFIC, INC

APRIL 10, 1998

SURVEYED BY

LAND SURVEYOR

DATE
ROBERT N. MIM MACK, L.S 5314

ORANGE COUNTY SURVEYOR

LEGEND

- INDICATES SET SPIKE & WASHER STAMPED
L.S 5314 UNLESS OTHERWISE NOTED.

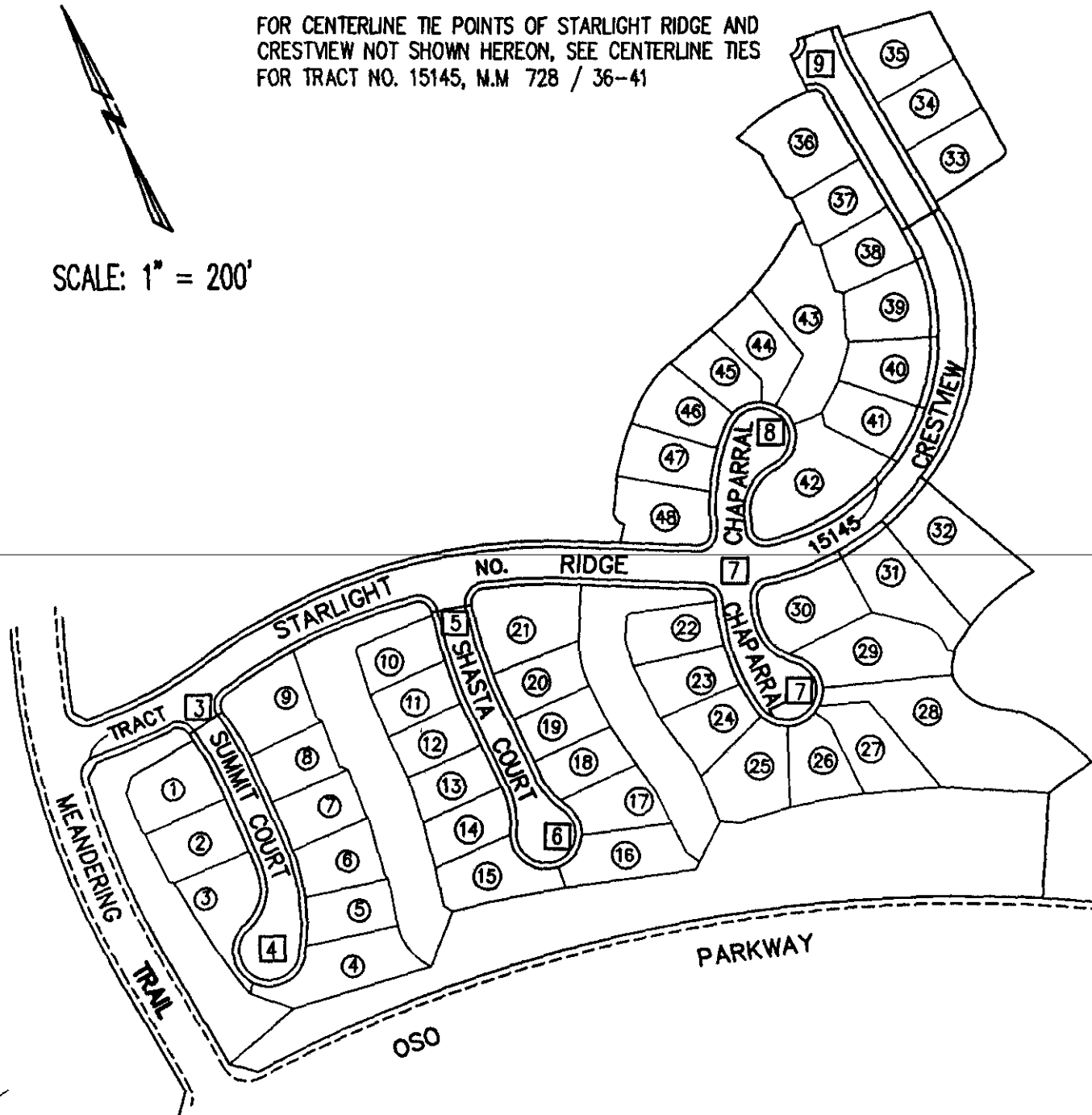
THESE NOTES NOT FIELD CHECKED
BY ORANGE COUNTY SURVEYOR

- [X] INDICATES TIE SHEET NUMBER.

ALL TIE POINTS ARE LEAD, TACK AND TAG
"L.S. 5314" SET IN TOP OF CURB UNLESS
OTHERWISE NOTED.

FOR CENTERLINE TIE POINTS OF STARLIGHT RIDGE AND
CRESTVIEW NOT SHOWN HEREON, SEE CENTERLINE TIES
FOR TRACT NO. 15145, M.M 728 / 36-41

SCALE: 1" = 200'



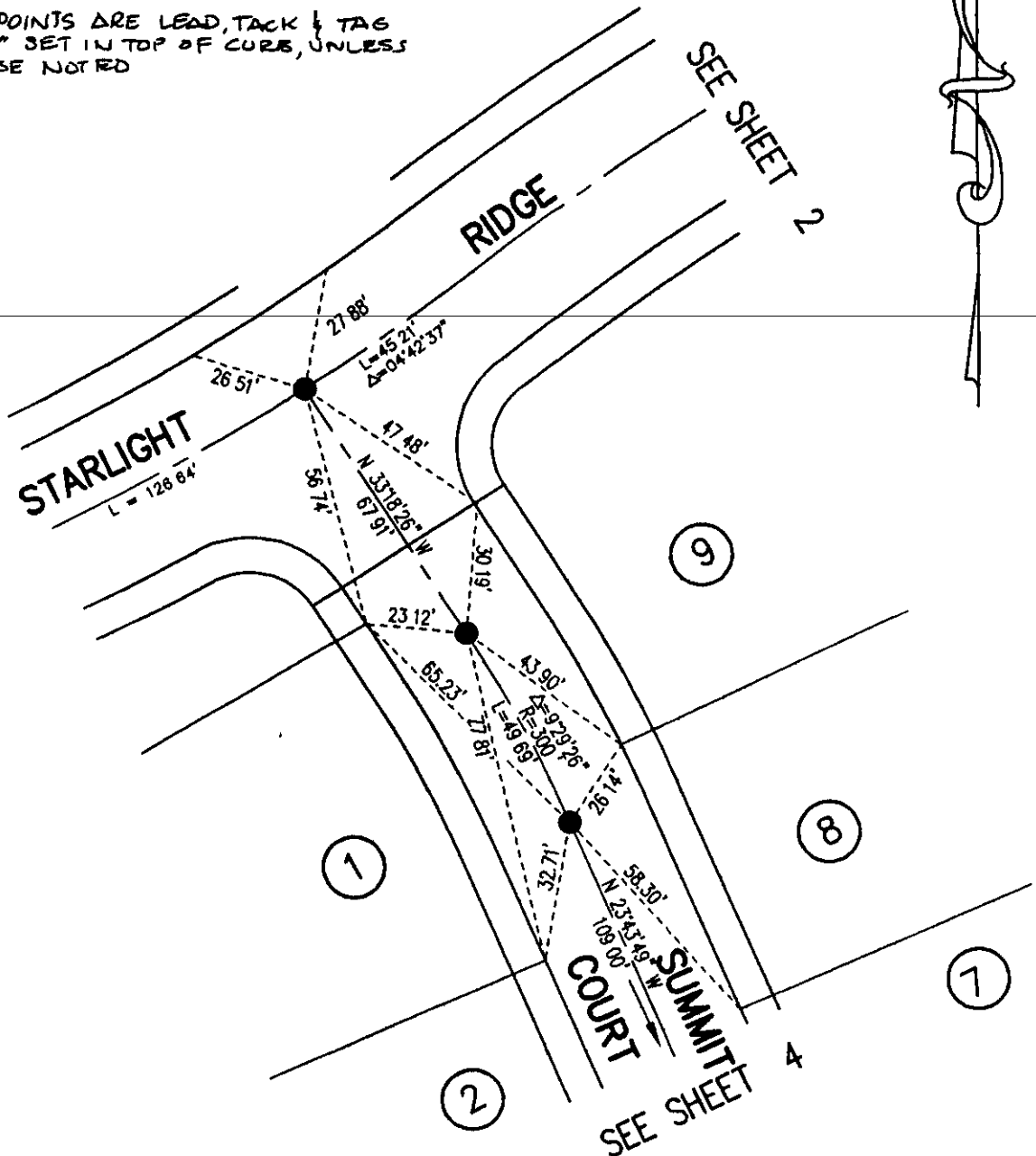
SCALE: 1" = 40'

THESE NOTES NOT FIELD CHECKED
BY ORANGE COUNTY SURVEYOR

LEGEND

- INDICATES SET SPIKE & WASHER STAMPED
L.S. 5314 UNLESS OTHERWISE NOTED

ALL TIE POINTS ARE LEAD, TACK & TAG
"LS 5314" SET IN TOP OF CURB, UNLESS
OTHERWISE NOTED



THESE NOTES NOT FIELD CHECKED
BY ORANGE COUNTY SURVEYOR

SCALE: 1" = 40'

LEGEND

- INDICATES SET SPIKE & WASHER STAMPED
L.S. 5314 UNLESS OTHERWISE NOTED.

ALL TIE POINTS ARE LEAD TACK & TAG
'LS 5314' SET IN TOP OF CURB UNLESS
OTHERWISE NOTED

