

Block 5258, Module: 01, 10, 11

CORNER RECORD

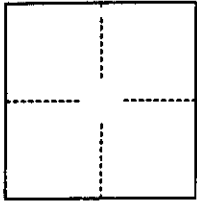
WM 40E

Document Number 98-311

City of UNINCORPORATED

County of ORANGE, California

Brief Legal Description TIES FOR CENTERLINE OF TRACT 15133



CORNER TYPE

Government Corner ☐ Control ☐  
Meander ☐ Property ☒  
Rancho ☐ Other ☐  
Date of Survey May 23, 1997

COORDINATES  
(Optional)

N \_\_\_\_\_  
E \_\_\_\_\_  
Zone \_\_\_\_\_ Datum \_\_\_\_\_  
Elev \_\_\_\_\_

Corner — Left as found ☐ Found and tagged ☐ Established ☒ Reestablished ☐ Rebuilt ☐

Identification and type of corner found Evidence used to identify or procedure used to establish or reestablish the corner  
SET SPIKE & WASHER RCE 23956 AT THE CENTERLINE OF THE STREETS IN THIS TRACT ON CASTLE TREE  
WOODSONG, AND GREENVALE

A description of the physical condition of the monument as found and as set or reset \_\_\_\_\_  
\_\_\_\_\_  
\_\_\_\_\_  
\_\_\_\_\_

SURVEYOR'S STATEMENT

This Corner Record was prepared by me or under my direction in conformance with the

Land Surveyors' Act on August 8, 1997

Signed Tom R. McGannon LS or RCE Number 23956

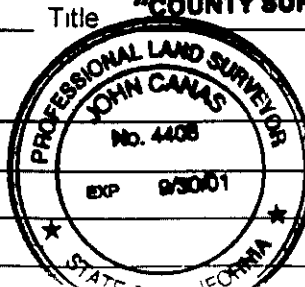
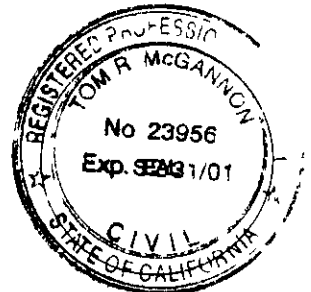
COUNTY SURVEYOR'S STATEMENT

This Corner Record was received July 7, 1998 and examined

and filed July 13<sup>TH</sup>, 1998

Signed John Canas Title "COUNTY SURVEYOR"

County Surveyor's Comment \_\_\_\_\_  
\_\_\_\_\_  
\_\_\_\_\_



DRAWN BY HUNSAKER &amp; ASSOCIATES, INC

DATE

MAY 23, 1997

ORANGE COUNTY SURVEYOR

LAND SURVEYOR TOM R McGANNON, R C E 23956

**NOTE**

ALL TIE POINTS ARE  
L & T TAGGED R C E 23956  
SET IN TOP OF CURB  
UNLESS OTHERWISE NOTED

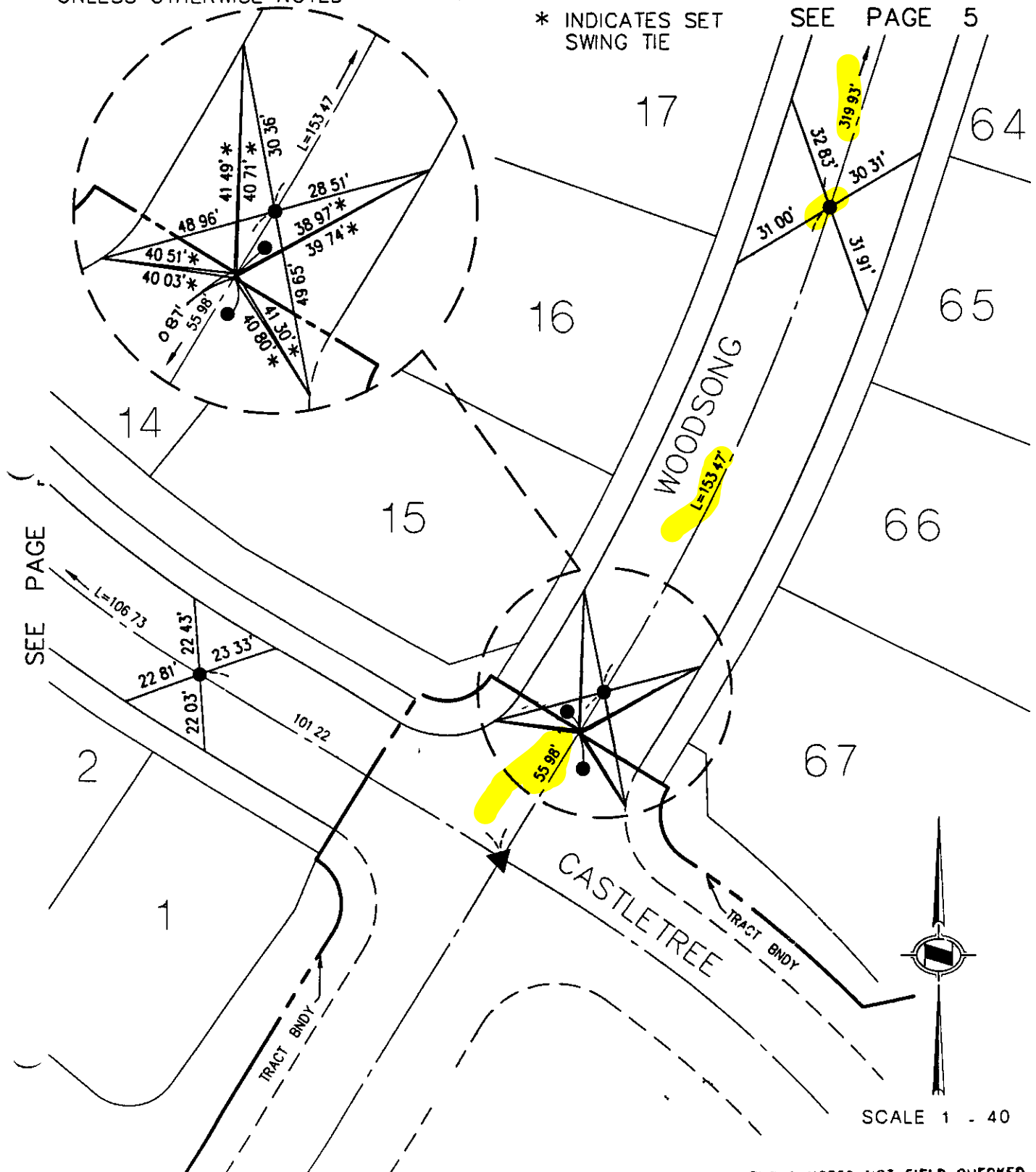
▲ FD S & W STAMPED  
LS 5557 PER TR  
NO 15047

**LEGEND**

● INDICATES SET 8" SPIKE &  
WASHER STAMPED R C E 23956  
UNLESS OTHERWISE NOTED

\* INDICATES SET  
SWING TIE

SEE PAGE 5



SCALE 1" = 40'

THESE NOTES NOT FIELD CHECKED  
BY ORANGE COUNTY SURVEYOR

SURVEYED BY HUNSAKER &amp; ASSOCIATES, INC

DATE

MAY 23, 1997

ORANGE COUNTY SURVEYOR

LAND SURVEYOR TOM R MCGANNON, R C E 23956

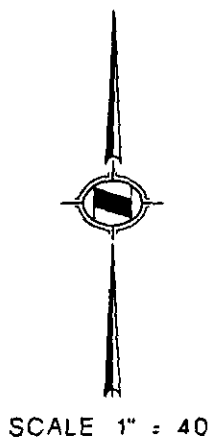
NOTE

ALL TIE POINTS ARE  
L & T TAGGED R C E 23956  
SET IN TOP OF CURB  
UNLESS OTHERWISE NOTED

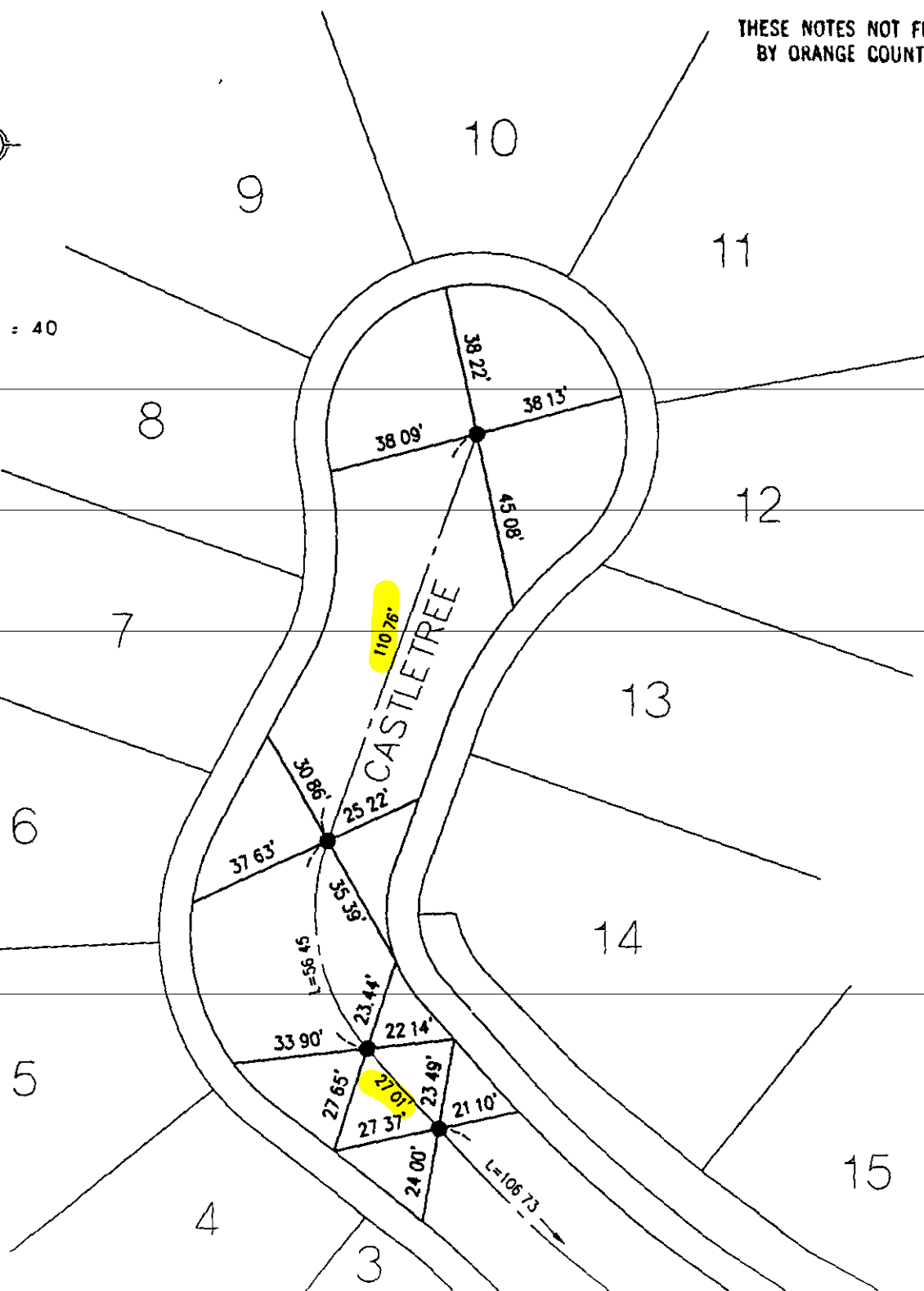
LEGEND

● INDICATES SET 8" SPIKE &  
WASHER STAMPED R C E 23956  
UNLESS OTHERWISE NOTED

THESE NOTES NOT FIELD CHECKED  
BY ORANGE COUNTY SURVEYOR



SCALE 1" = 40



SEE PAGE 3

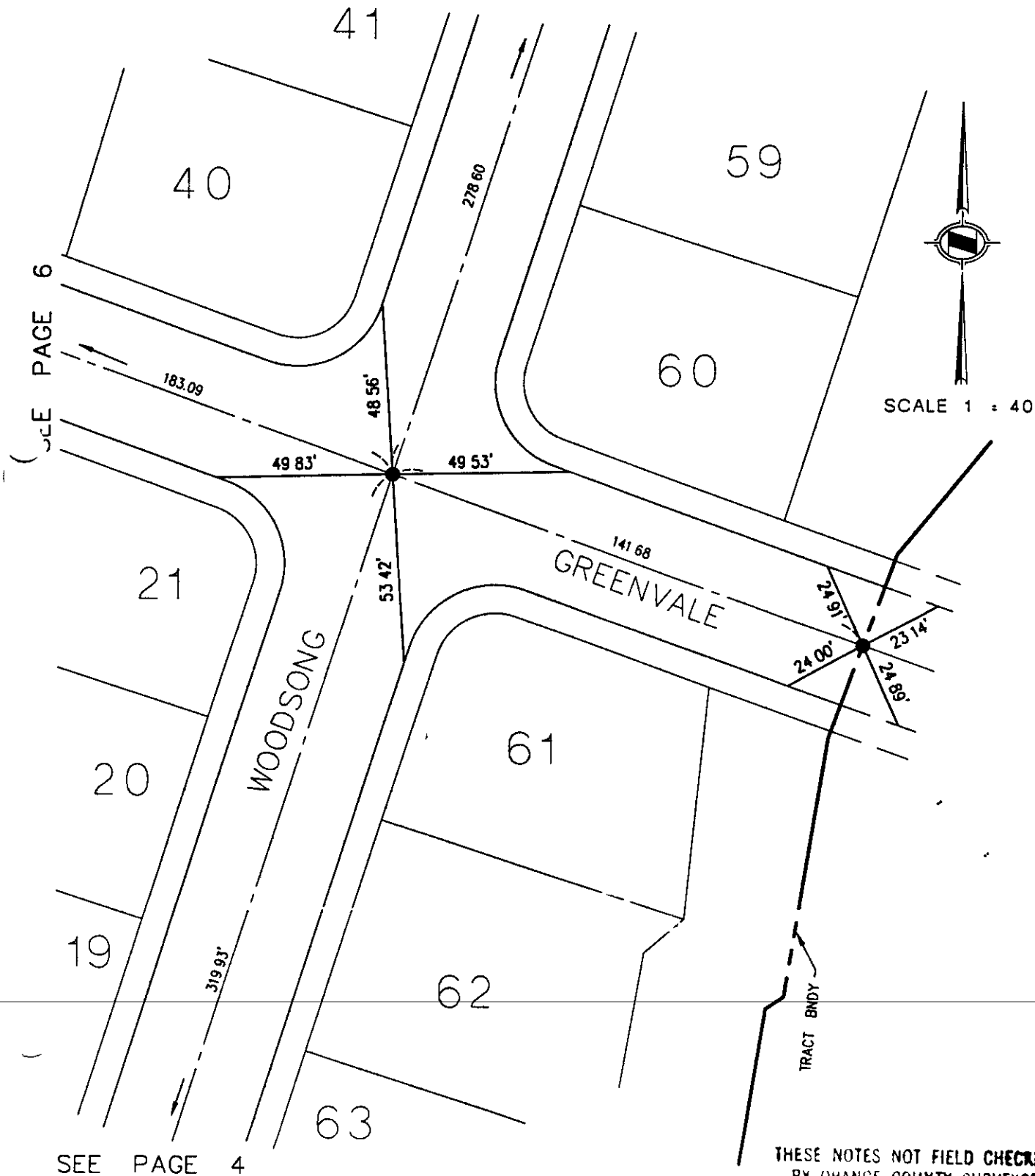
**NOTE**

ALL TIE POINTS ARE  
L & T TAGGED R C E 23956  
SET IN TOP OF CURB  
UNLESS OTHERWISE NOTED

**LEGEND**

● INDICATES SET 8" SPIKE &  
WASHER STAMPED R C E 23956  
UNLESS OTHERWISE NOTED

SEE PAGE 8



THESE NOTES NOT FIELD CHECKED  
BY ORANGE COUNTY SURVEYOR