

BLOCK MODULES  
5158 09  
5258 00, 10 & 11  
CORNER RECORD

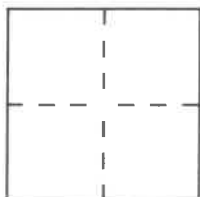
WM 44E  
98-174

Document Number

City of UNINCORPORATED TERRITORY

County of \_\_\_\_\_, California

Brief Legal Description TRACT NO. 15047, M.M. 719/43-50



CORNER TYPE

Government Corner ☐ Control ☒  
Meander ☐ Property ☐  
Rancho ☐ Other ☐  
Date of Survey \_\_\_\_\_

COORDINATES  
(Optional)

N. \_\_\_\_\_  
E. \_\_\_\_\_  
Zone \_\_\_\_\_ Datum \_\_\_\_\_  
Elev. \_\_\_\_\_

Corner — Left as found ☐ Found and tagged ☐ Established ☒ Reestablished ☐ Rebuilt ☐

Identification and type of corner found: Evidence used to identify or procedure used to establish or reestablish the corner:

THE PURPOSE OF THIS CORNER RECORD IS TO PERPETUATE THE  
CENTERLINE OF ANTONIO PARKWAY, MEANDERING TRAIL,  
SWEETWATER, OAKTREE, WOODSONG, AND CRESTVIEW.

A description of the physical condition of the monument as found and as set or reset:

- 1.) SET SPIKE & WASHER STAMPED "L.S. 5557" AS NOTED.
- 2.) SET LEAD AND BRASS PIN AS NOTED.
- 3.) SET LEAD, TACK & TAG "LS 5557 TIE PT." AS NOTED
- 4.) SET OCS WELL MONUMENT WITH 2" BRASS CAP STAMPED  
"L.S. 5557" AS NOTED.

SURVEYOR'S STATEMENT

This Corner Record was prepared by me or under my direction in conformance with  
the Land Surveyors' Act on MARCH 20 1998.

Signed [Signature] L.S. or R.C.S. Number 5557



COUNTY SURVEYOR'S STATEMENT

This Corner Record was received 4-7 1998 and examined

and filed April 27th 1998.

Signed [Signature] Title Deputy County Surveyor



County Surveyor's Comment \_\_\_\_\_

THESE NOTES NOT FIELD CHECKED  
BY ORANGE COUNTY SURVEYOR

# ¶ TIES - TRACT NO. 15047

JAMES F. GILLEN, L.S. 5557

HUITT-ZOLLARS, INC.

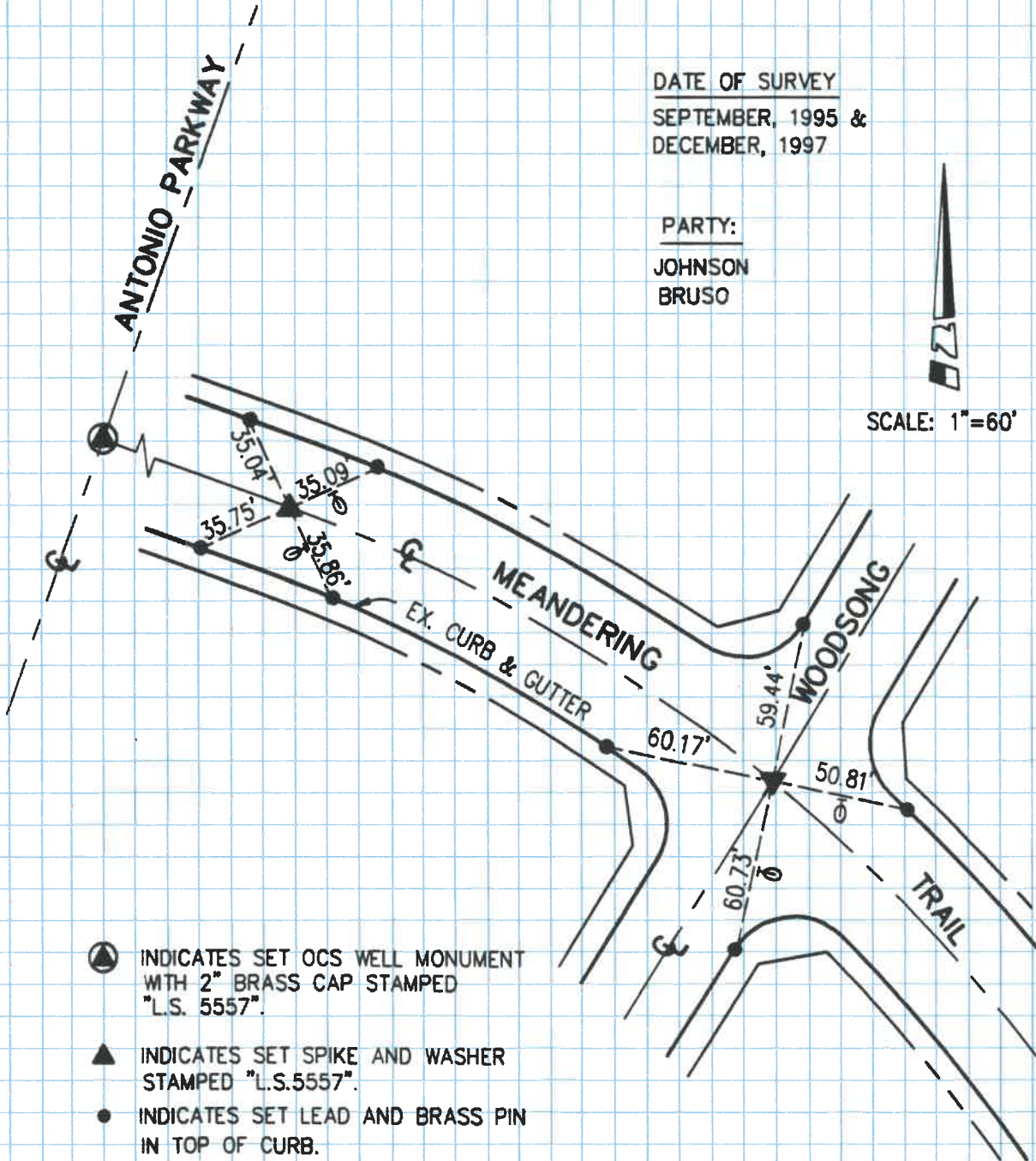
DATE OF SURVEY

SEPTEMBER, 1995 &  
DECEMBER, 1997

PARTY:

JOHNSON  
BRUSO

SCALE: 1"=60'



⊙ INDICATES SET OCS WELL MONUMENT  
WITH 2" BRASS CAP STAMPED  
"L.S. 5557".

▲ INDICATES SET SPIKE AND WASHER  
STAMPED "L.S.5557".

● INDICATES SET LEAD AND BRASS PIN  
IN TOP OF CURB.

⊗ INDICATES TANGENT OVER TIES



# ☼ TIES - TRACT NO. 15047

JAMES F. GILLEN, L.S. 5557

THESE NOTES NOT FIELD CHECKED  
BY ORANGE COUNTY SURVEYOR

HUITT-ZOLLARS, INC.

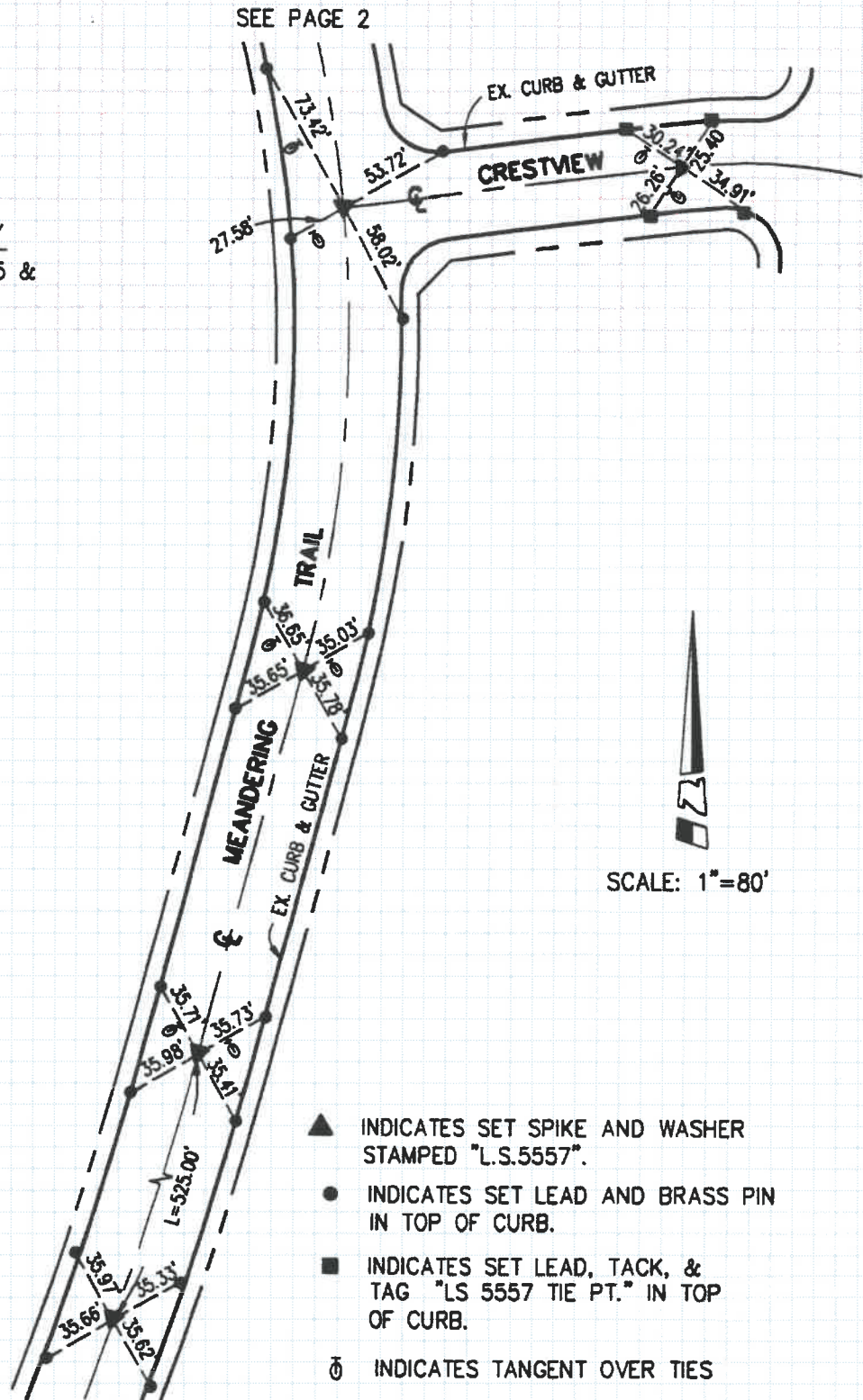
## PARTY:

JOHNSON  
BRUSO

## DATE OF SURVEY

SEPTEMBER, 1995 &  
DECEMBER, 1997

SEE PAGE 2



# € TIES - TRACT NO. 15047

JAMES F. GILLEN, L.S. 5557

HUITT-ZOLLARS, INC.

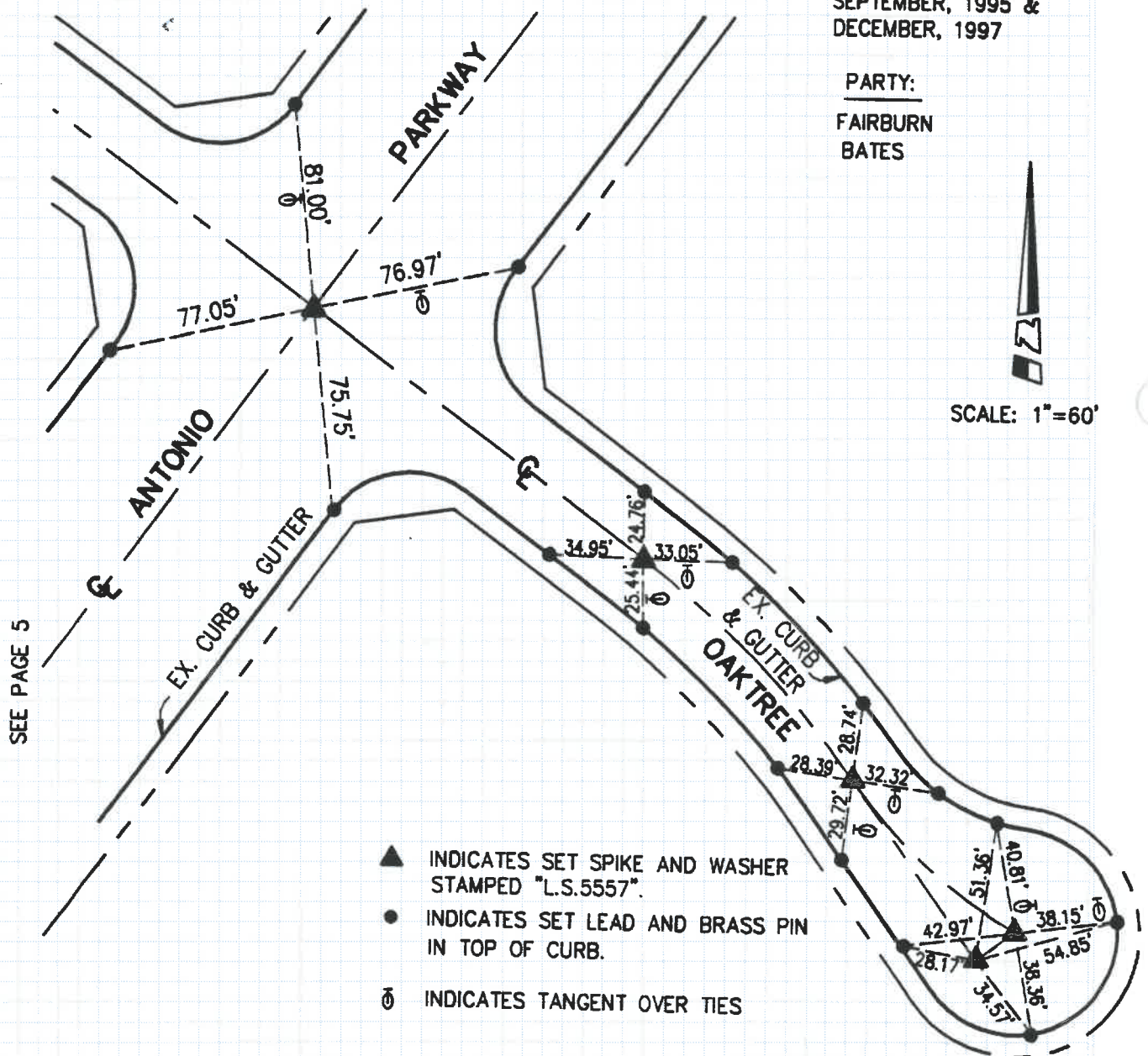
DATE OF SURVEY

SEPTEMBER, 1995 &  
 DECEMBER, 1997

PARTY:

FAIRBURN  
 BATES

SEE PAGE 2





THESE NOTES NOT FIELD CHECKED  
BY ORANGE COUNTY SURVEYOR

# ☒ TIES - TRACT NO. 15047

JAMES F. GILLEN, L.S. 5557

HUITT-ZOLLARS, INC.

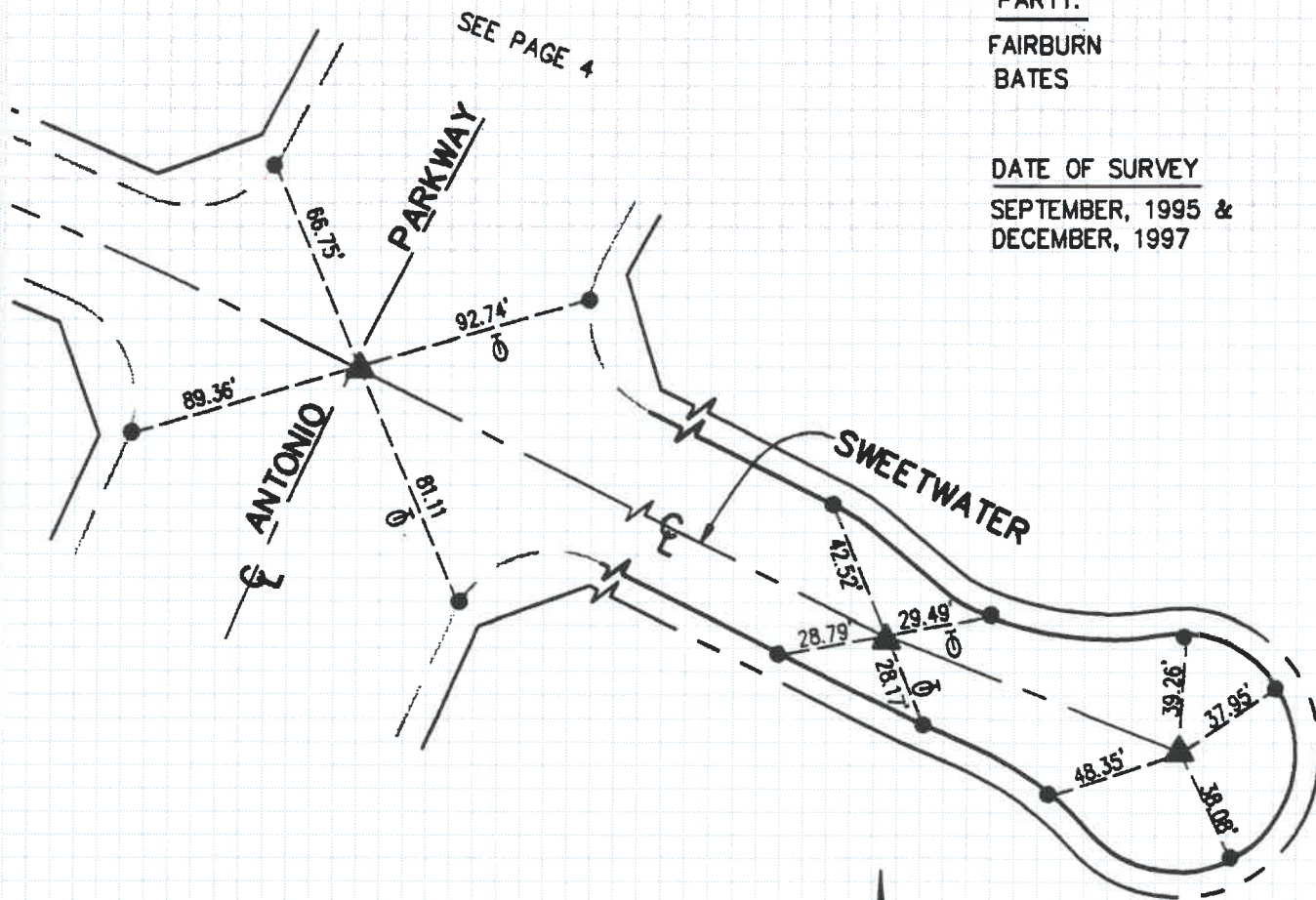
PARTY:

FAIRBURN

BATES

DATE OF SURVEY

SEPTEMBER, 1995 &  
DECEMBER, 1997



- ▲ INDICATES SET SPIKE AND WASHER  
STAMPED "L.S.5557".
- INDICATES SET LEAD AND BRASS PIN  
IN TOP OF CURB.
- ☒ INDICATES TANGENT OVER TIES

SCALE: 1"=60'

A large grid of graph paper for surveying, with three binder holes on the right side.